

2nd **World** **Forum on** **Urban** **Forests**

2023



**World Forum on
Urban Forests**



Cecil Konijnendijk

NBS Institute



**World Forum on
Urban Forests**

2nd **World** **Forum on** **Urban** **Forests**

2023



**World Forum on
Urban Forests**



2nd World Forum on Urban Forests

Washington DC, 2023

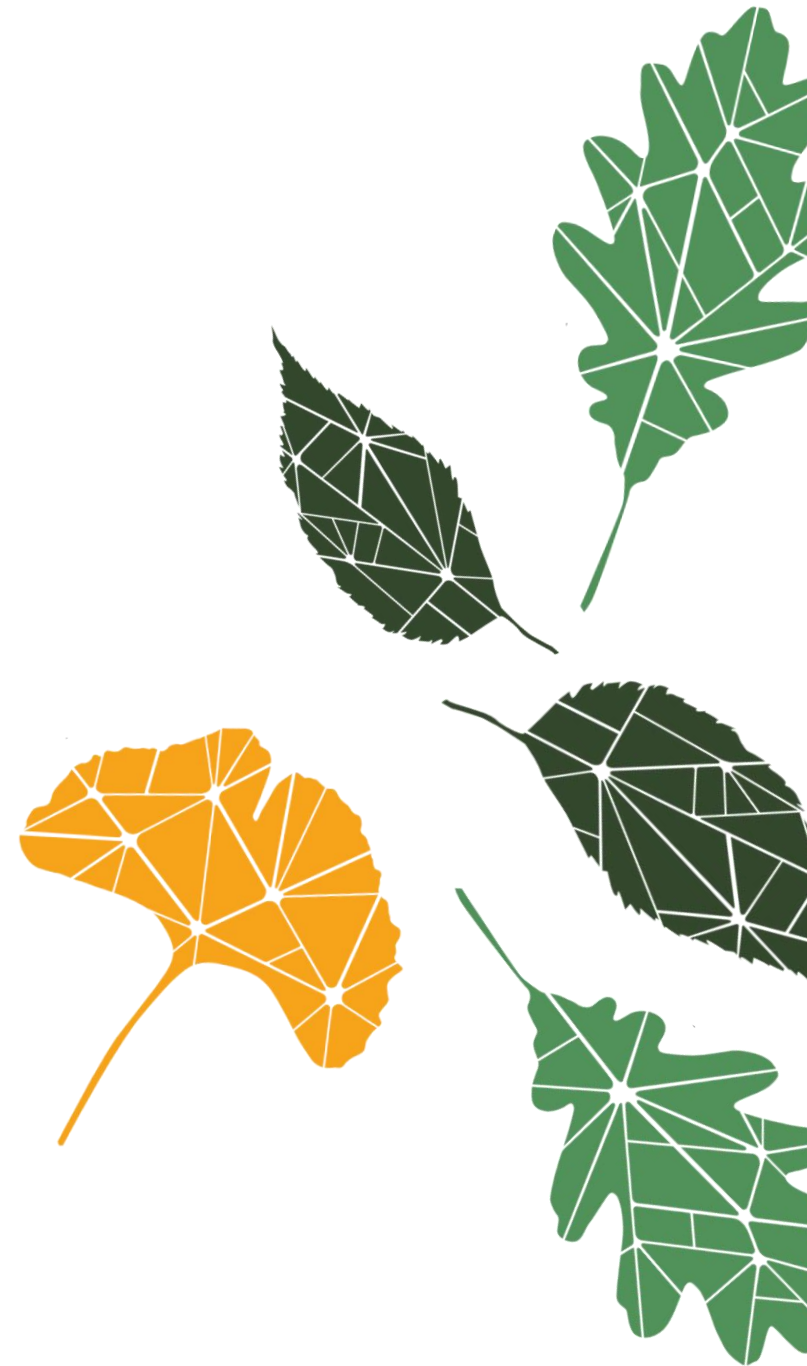
Wake up and unite!

Hope in the horizon — The Rise of Resilient Cities



Presented by

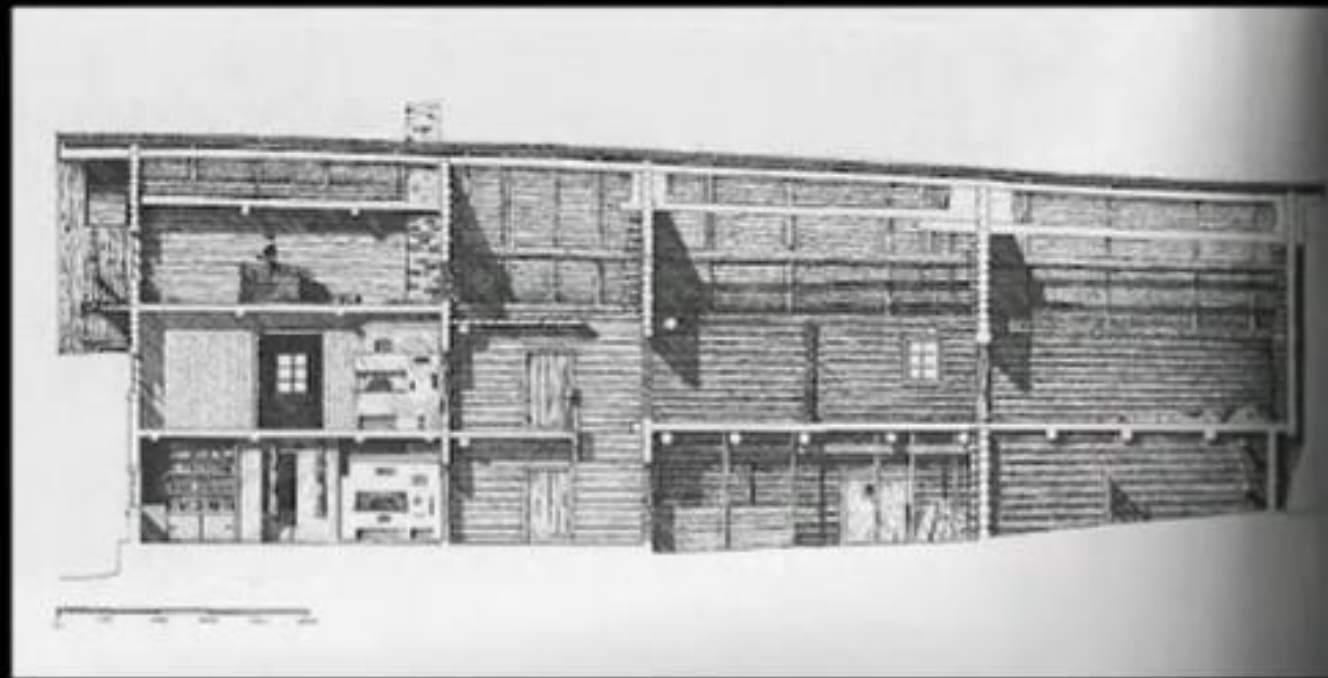
Kai Lintunen
Head of International Communication
Finnish Forest Association
Team Leader, FAO-UNECE Forest Communicators
Network



**wood construction
and infrastructure
complement the
greening of cities**



Architecture as a site specific human expression - compared to language/ dialect



Today: 6000 languages, 5000 with less than 100.000 speakers

Future: 1000 languages left in 100 years

Past: 60.000 languages 100 years ago

Loss of Human Biodiversity



Wood architecture is like a language

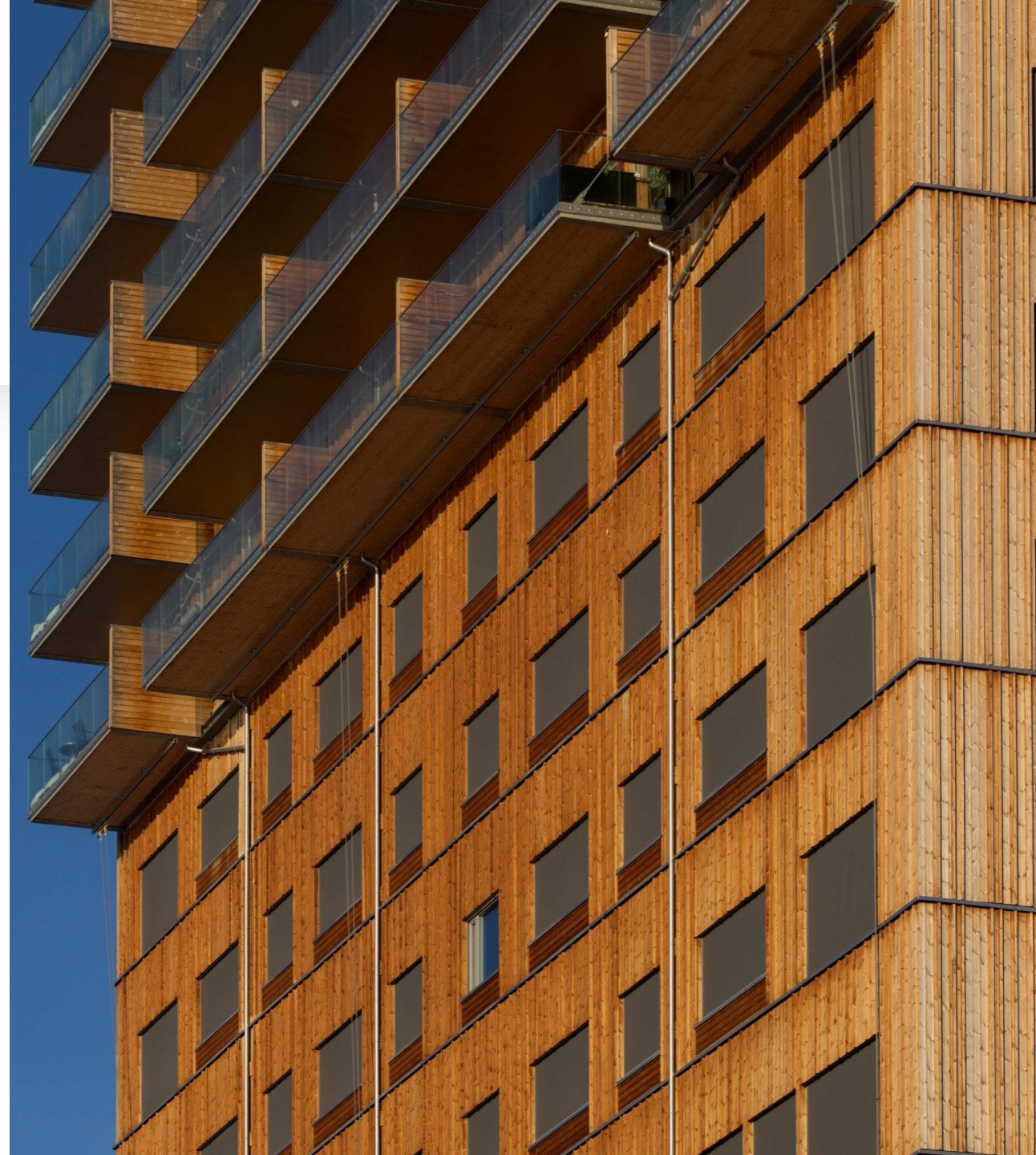
Accessibility - Efficiency

- **What is local in the environment should be accessible to everyone - regardless of age, abilities, wealth - and cannot be virtualized**
→ urban green and recreation
- **Whole, solid** but not necessarily always the most efficient environment
- **Human scale, flexibility** of buildings and other structures
- **Speed and modularity**

Connecting/coordinating wooden infrastructure and urban green is natural

Building with wood has many different identities

- Industrial building with wood can look for its own ways of expression
- There is no single, uniform way of building with wood
- Boundaries between "modern" and "traditional" can be crossed and they are often only apparent
- No use comparing building with wood to building with concrete





Eight advantages of wood construction

- Building with wood is **better for the climate**. ...
- **Long-term** sustainable construction. ...
- A better **insulator** than other materials...
- High **strength in relation to weight**. ...
- Shorter construction **times**. ...
- **Building** with wood is **less noisy & less waste**. ...
- Wooden buildings are **healthy**...
- **Lighter transport**...

Use of
wood
-
resilience
against

- Earthquakes
- Hurricanes
- Snow/Rain
- Flood
- Disease
- Heat
- Wildfire





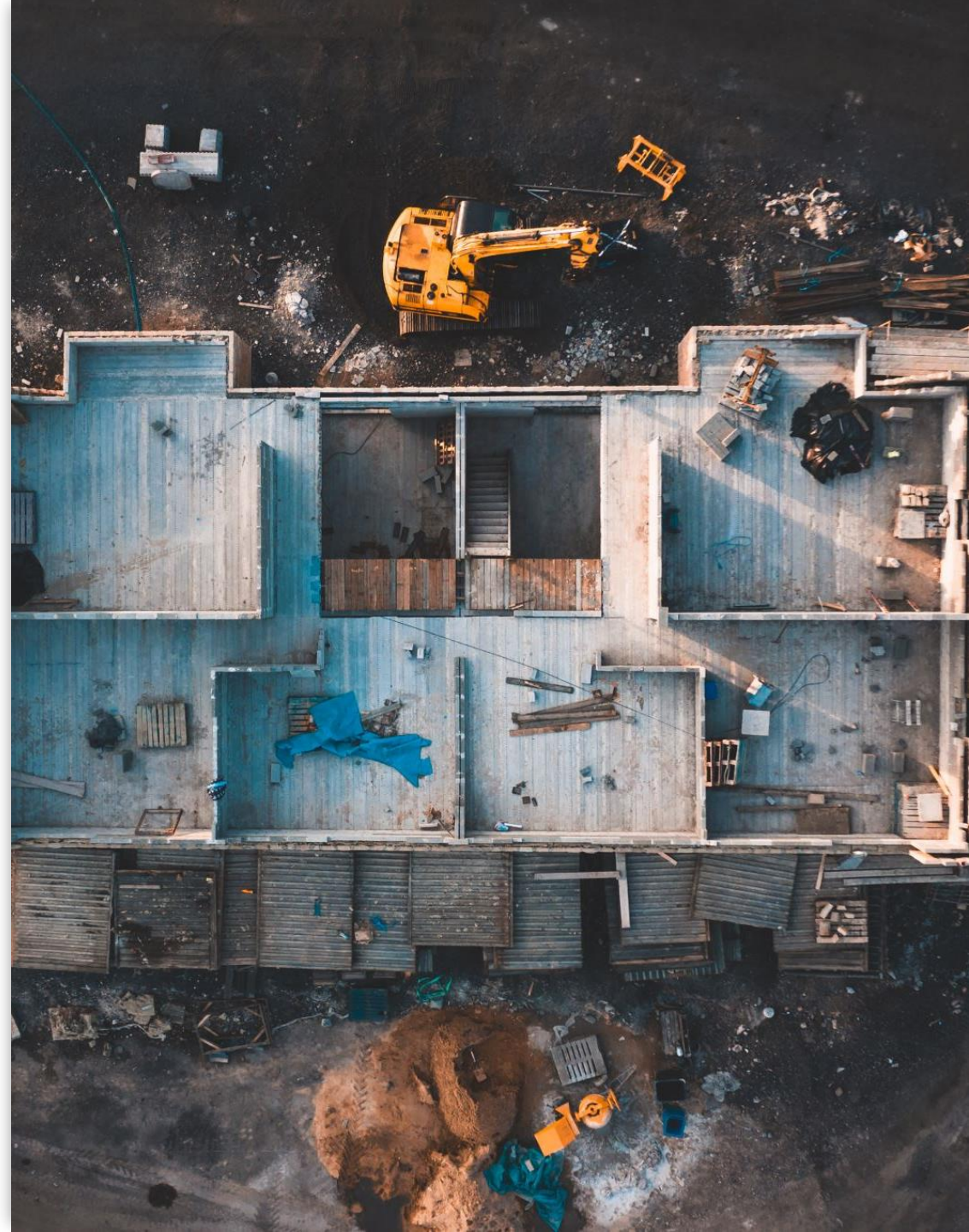
Sustainable Wood: Climate-friendly cities video screened at COP 27



fao.org

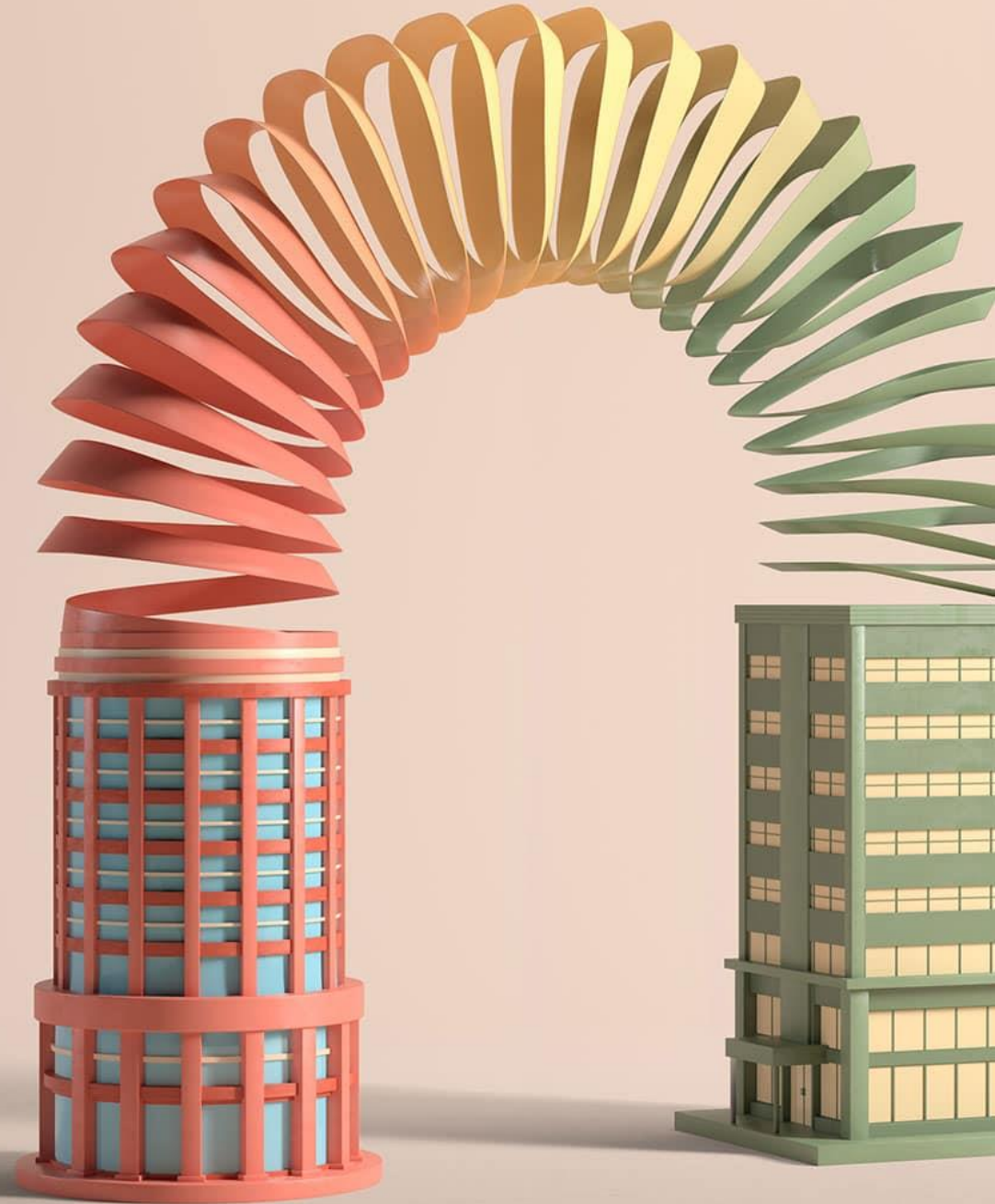
Resilient structures

- Designed to **withstand** and **recover quickly** from adverse situations with an **acceptable level of functionality**
- A structure built of **wood withstands natural disasters with minimal damage**: easier to repair and can contribute to sustainable development – it **minimizes human risk, reduces material waste and lowers restoration costs**



Adaptability for future uses

- Buildings which have the flexibility to change uses over their lifetime will **reduce the need to demolish and rebuild new structures**
- Wood structures **readily adapted**: ease of workability - **lightweight and low density** material, allows wood building systems to be **cut, shaped, removed and reconfigured with ease**



Renew wood vocabulary



Reuse



Industrial
refurbishment



Circular use, not
linear



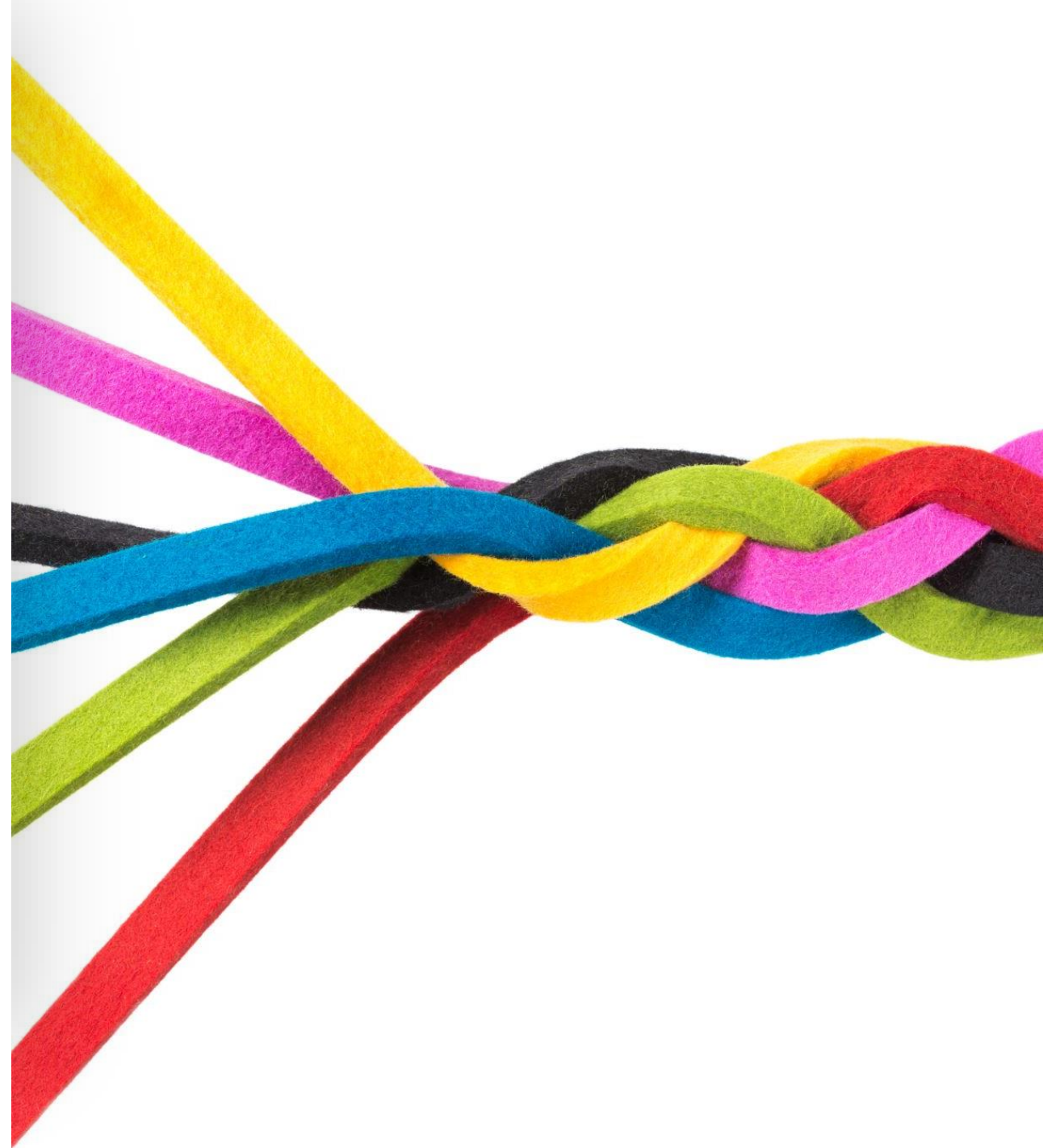
“Not building”



New materials

Circular material loop re-thought

- **Narrowing** the loop – using less
- **Slowing** the loop – using longer
- **Closing** the loop – using again
- **Regenerating** the loop – making cleaner / better



Two views for the future of wood

Wood is "one material among others"

- Low carbon
 - Renewability
 - Industrial processing
 - Hybrid structures etc.
-
- Wood product industry
 - Climate policy

Modernizing wood building

- Cityscape
 - **Image**
 - **Urban structure**
 - New building types vs. relationship with tradition
-
- Role of cities
 - Land use policy

Public and private players unite!

- Administration/Authorities
- Research
- Education
- Financing
- Building companies
- Forest product companies
- Citizens

NOT MUCH AWARENESS OF THE ADVANTAGES OF WOOD

- **Energy-efficient building material with a low carbon footprint**
- **High heat insulation**
- **Climate friendly**





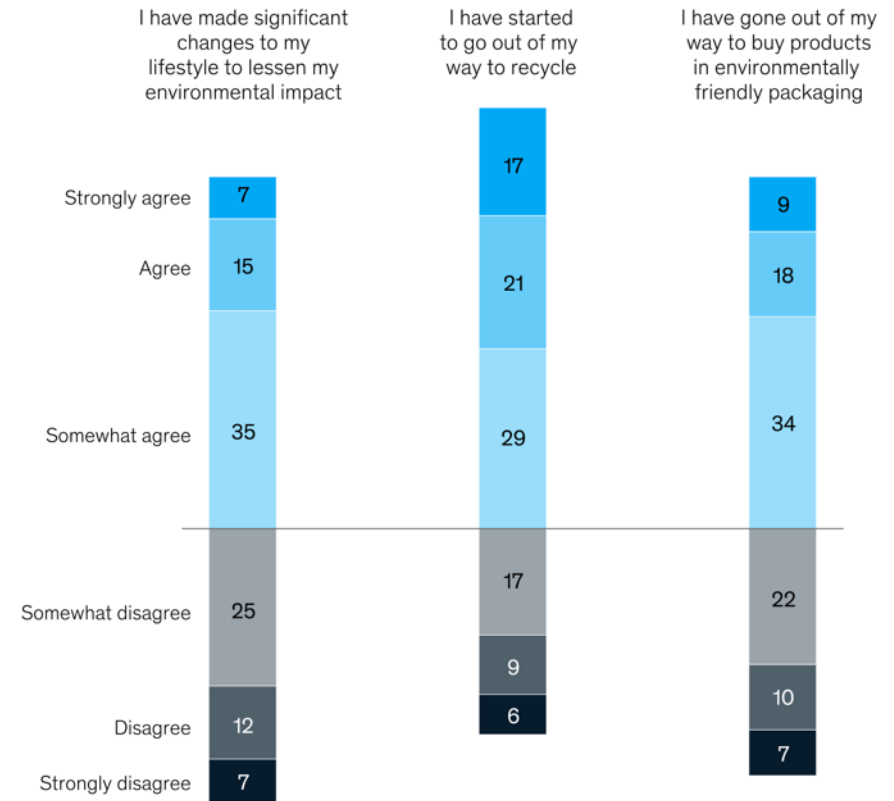
1 / FRAME SUSTAINABLE WOOD AS A SOLUTION



Google search results for "climate crisis trees". The search bar shows "climate crisis trees" and the "Images" tab is selected. Below the search bar are filters for "study says", "planting trees", "telethon", "mind blowing", "tackle climate change", "trillion", "350 million", and "defores". The search results display a grid of images related to tree planting and climate crisis, including articles from businessinsider.com, junkee.com, electrek.co, futuristgerd.com, medium.com, climateaction.org, en24.news, and metro.co.uk.

2 / THE TIME IS NOW

Change in behavior during COVID-19 crisis, % of respondents (n = 2,004)¹



¹Figures may not sum to 100%, because of rounding. Question: Thinking about your habits and attitudes over the past several weeks compared with prior to the COVID-19 crisis, to what extent do you agree with the following statements?

Nearly 60% of consumers have made significant changes to their lifestyles to lessen their environmental impact.

- McKinsey Research

Through communication we can change consumer behavior



3 /

INNOVATION

IS ON OUR

SIDE





Stockholm Wood City

Construction of the world's largest urban development project in wood to begin in 2025



Launch of Sustainable Wood: Housing a growing population at the 8th World Forest Week & COP27



fao.org

At it's simplest...

**RETHINK THE SOLUTION.
RETHINK WOOD**

GROW
THE SOLUTION

WOOD. NATURE'S SUSTAINABLE SOLUTION.

Thank you!

kai.lintunen@smy.fi
[@birdieviews](#)

2nd **World** **Forum on** **Urban** **Forests**

2023



**World Forum on
Urban Forests**



Cape Town's urban Forest and Resilience Journey

Tamsin Faragher



**World Forum on
Urban Forests**

2nd **World** **Forum on** **Urban** **Forests**

2023



**World Forum on
Urban Forests**



2nd World Forum on Urban Forests

Washington DC, 2023



WELCOME

Presented by

Gadwal Vijayalaxmi

Mayor, Greater Hyderabad Municipal Corporation

Hyderabad, Telangana, India





**2nd World Forum on
Urban Forests**
Washington DC, 2023

Greening initiatives in Hyderabad

Telangananaku Haritha Haram

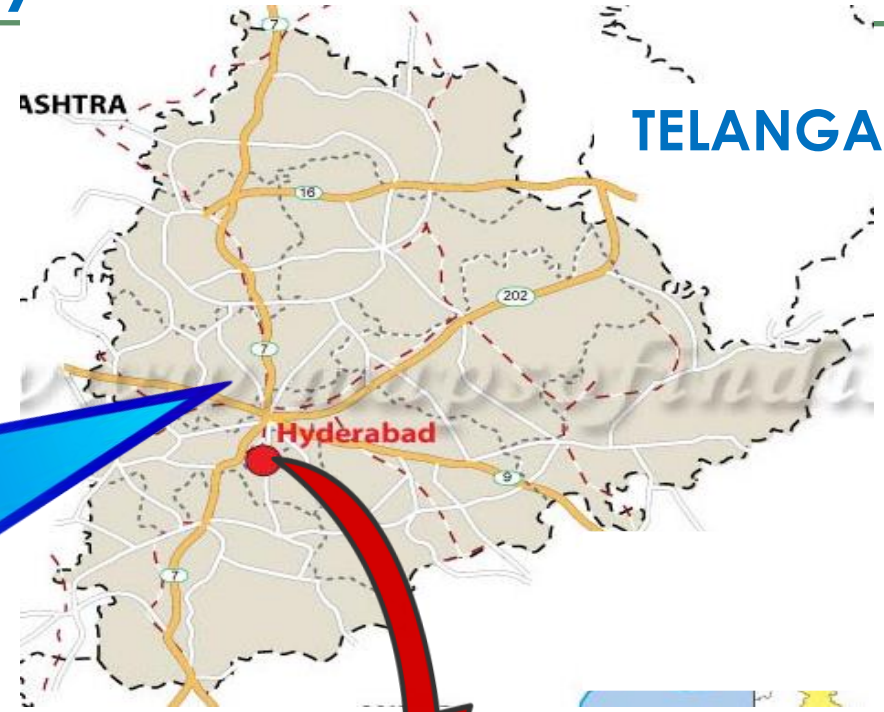
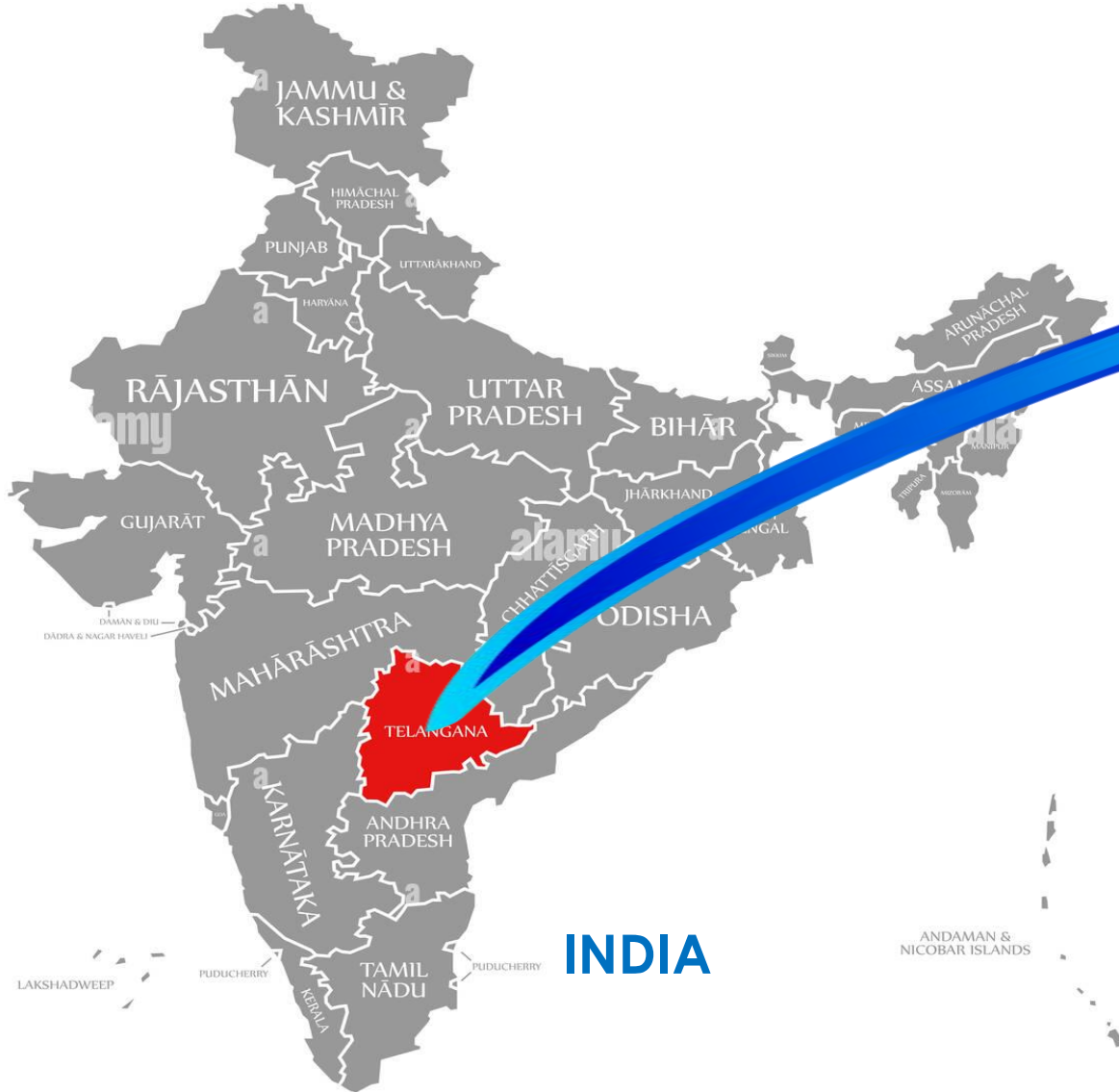




2nd World Forum on Urban Forests

Washington DC, 2023

India-Telangana-Hyderabad



INDIA

HYDERABAD

TELANGANA

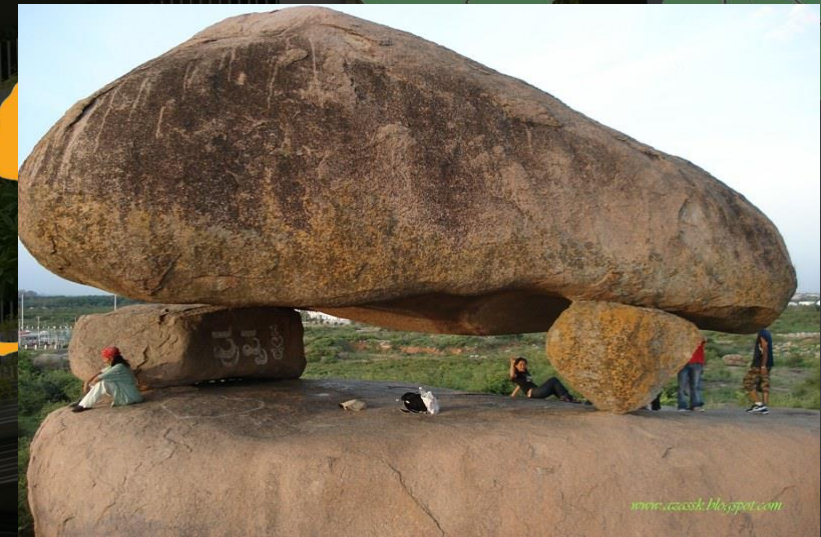
Hyderabad

- Hyderabad is capital city of Telangana, India.
- It is World Green City and also Tree City of World.
- Best city to live in India for the fifth consecutive year in the Mercer's Quality of Living (India) Rankings – 2019
- 143rd place in the quality of living ranking announced globally.



Tree City of World & World Green City

- Hyderabad Situated on the Deccan plateau
- Most of the city has variously shaped gneissic granite rock formations which are oldest in the world.
- Largest single carved rock Buddha statue in the world
- Hussain Sagar Lake – The Largest Man-Made Lake in all of Asia.
- Ramoji Film City - Largest Film Studio Complex in the World
- Original home of the Koh-i-Noor
- City of pearls
- Charminar –the iconic land mark
- City of Lakes

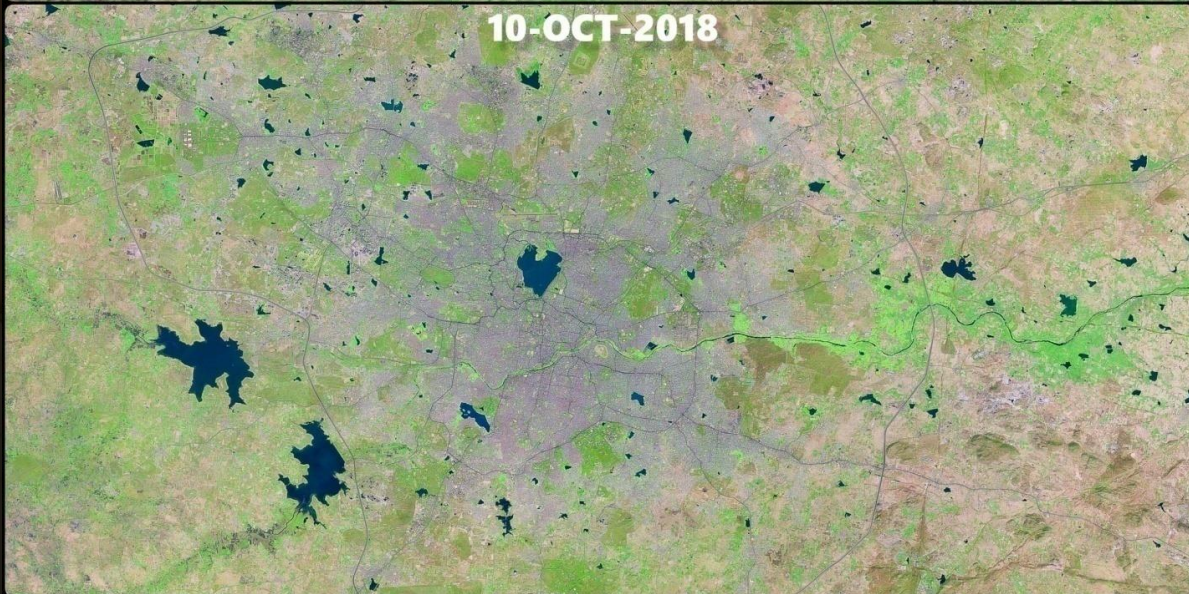


Demography

- Hyderabad City area is 250 Sq miles
- In 1950, the population of Hyderabad was 1.00 million.
- The population has grown from 3.6 million (2001) to 7.7 million (2011)
- Hyderabad's 2022 population is now estimated at **110.00 millions.**
- **4th Most Populous City of India**
- **Average Decadal population growth rate is- 40%**

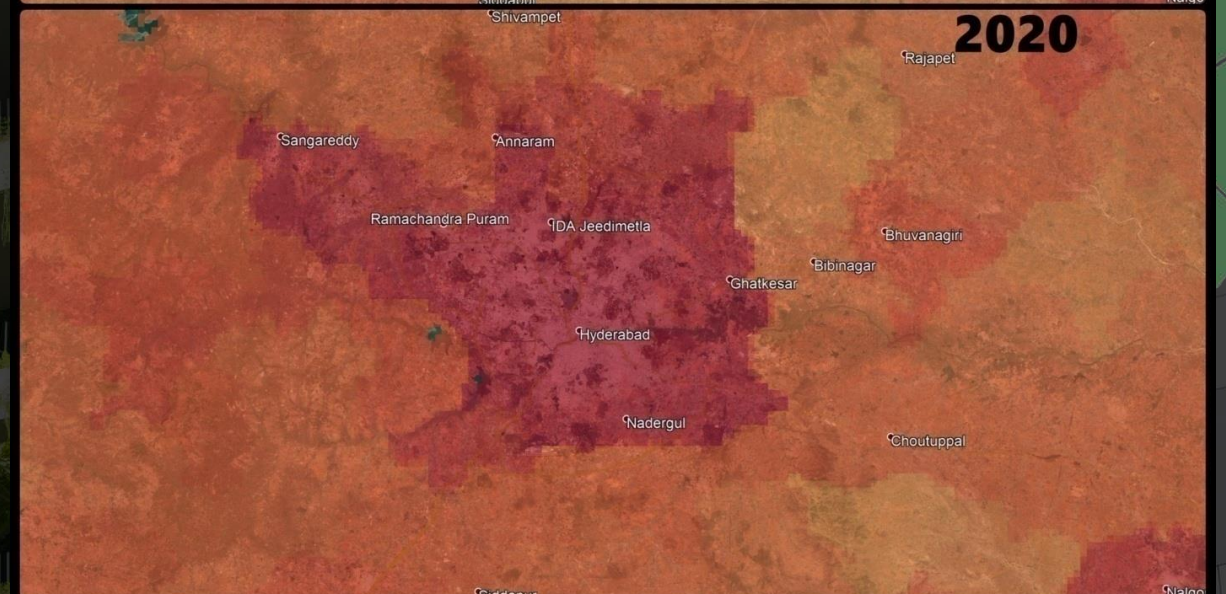


Hyderabad transformation in last 42 years (1976-2018)



□ Data:
Mod Landsat 1-7

Population Expansion Between 2000-2020 Around Hyderabad



LEGEND



< 1 person to > 1000 persons
Per Sq Km

Hyderabad- Dynamic City

- The city is witnessing a rapid expansion
- Industrial boom
- Increased trade opportunities
- India's Pharmaceutical Capital
- Major IT firms like Microsoft, IBM, Google, Samsung, Dell
- Hyderabad is the world's 2nd most dynamic city



Major problems of Urbanisation

- Urban Sprawl
- Overcrowding
- Housing issues
- Unemployment
- Slums and Squatter Settlements
- Transport issues
- Water Scarcity
- Sewerage Problems
- Trash Disposal
- Urban Crimes



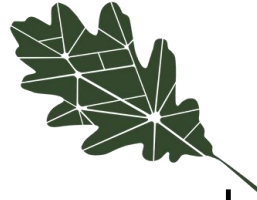


- First city in India to have a City Biodiversity Index in 2012
- In spite of rapid urbanization of the city, the biodiversity is well preserved
- Three National parks located within and adjoining limits of the city
- Plant surveys initiated in 2007 recorded c.1500 species belonging to 730 genera and 160 families





- GHMC is involved in creation of bio-aesthetic environment by developing green, beautiful & hygienic atmosphere for the citizens
- To create green lung spaces
- To maintain ecological balance and to reduce pollution levels.
- **Urban forestry** - Care and management of tree populations in urban settings for improving the urban environment
- GHMC have separate Urban Biodiversity Wing to take up all greening activities

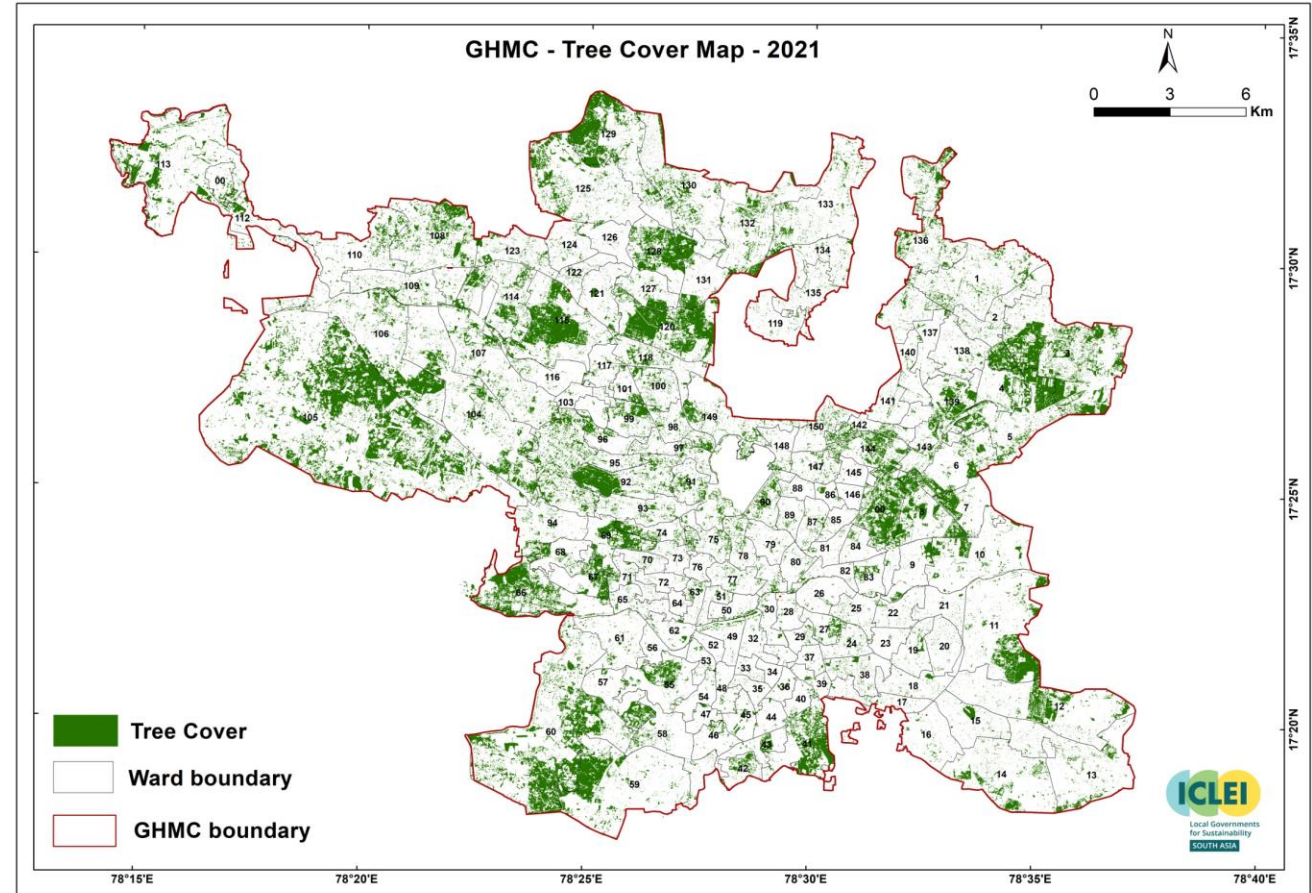
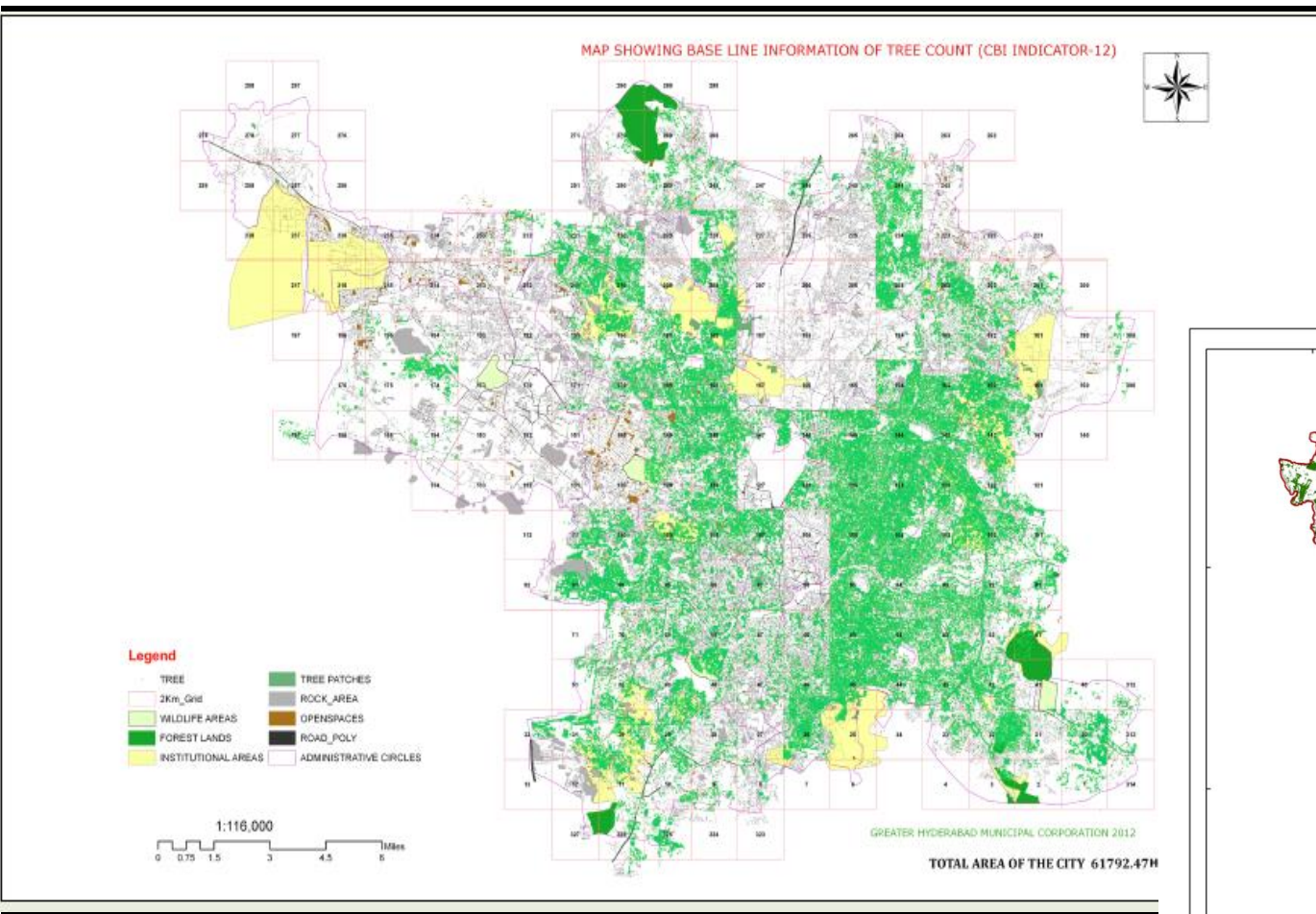




Why Urban Forests?

- Improving the living environment
- Pollution Control
- Water Conservation
- Mitigating Urban Climate
- Reducing The Urban Heat Island
- Improving The Quality Of Urban Living
- Reduction of Urban Flooding
- Improve human health





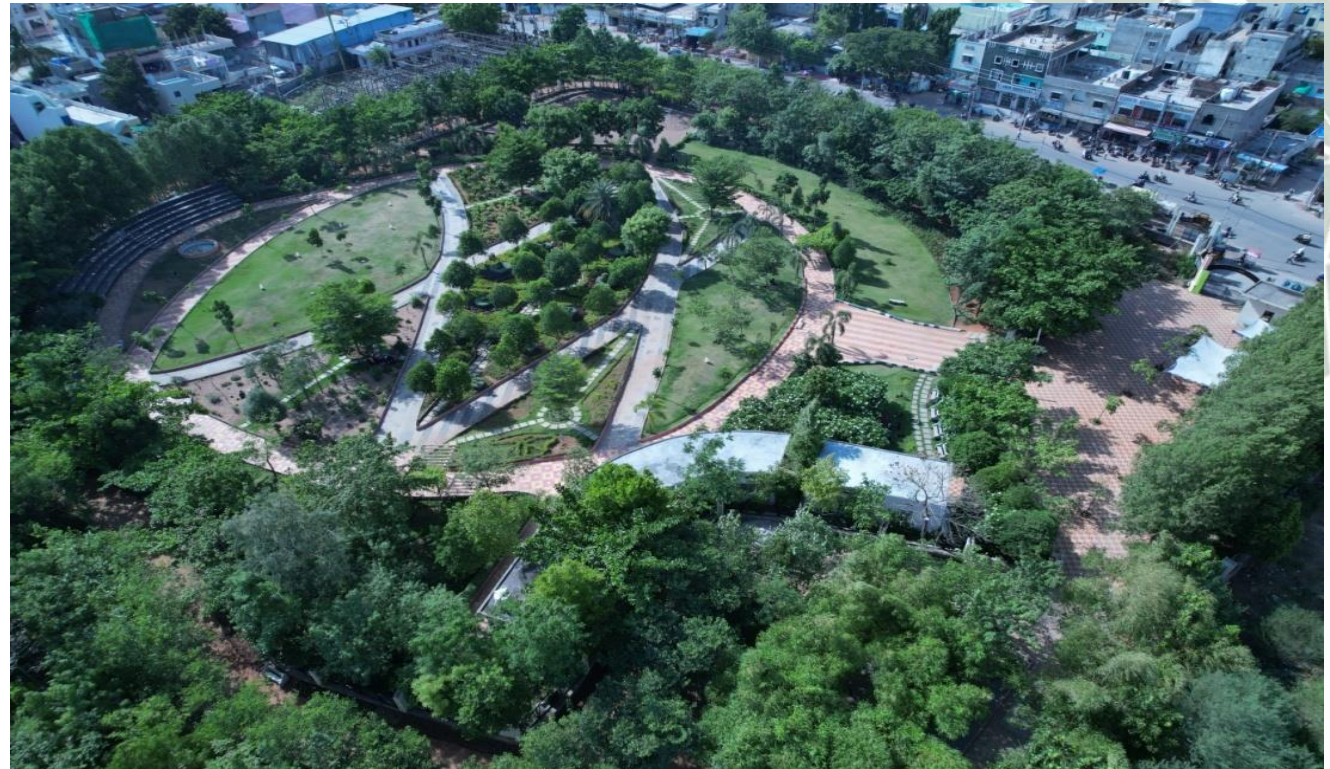


- The city of Greater Hyderabad has 185 lakes- Wetland related biodiversity in the city.
- Musi Riverine System-24 Kilometers through core city and provides grasslands eco-system.
- 1.60 lakh acres of Reserve Forest land inside and within the radius of 25 kms from city
- About 3000 Urban public places and man-made Parks



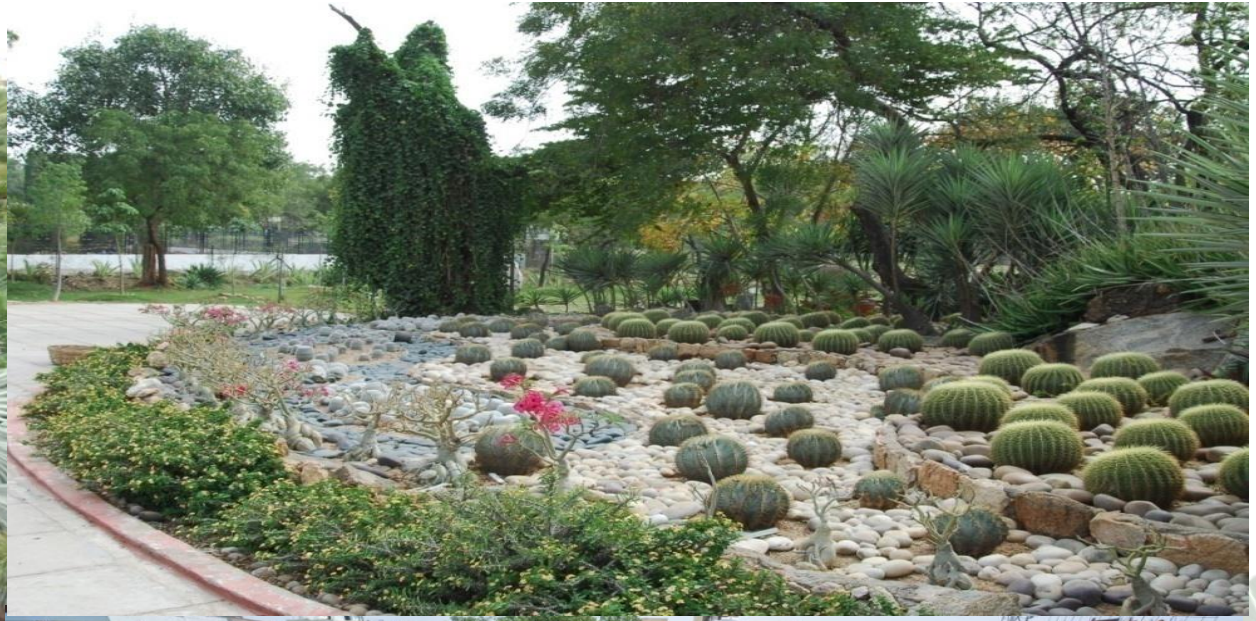


39 Major Parks each
having more than 5 Acres
in extent





60 Theme Parks having various themes





**2nd World Forum on
Urban Forests**

Washington DC, 2023

PARKS DEVELOPED IN HYDERABAD CITY



Gandipet Park



Butterfly Garden, Sanjeevaiah Park



Sanjeevaiah Memorial, Sanjeevaiah Park



MAZE Garden Sanjivaiah park



20 Panchatatva Parks which work on acupressure concept

are developed in the city by GHMC





**1141
Colony
parks** have
been
developed.



760 parks
are being
maintained
by CWAs.



- Green roofs make the most of unused space within the increasing density of our cities. It is assessed that about 50000 acres of Roof Top is available in Hyderabad City
- Plants on Roof tops are able to cool down entire cities, reducing the UHI (Urban Heat Island) effect through the daily evaporation cycle
- Terrace gardens are encouraged on subsidy & plants at free of cost benefitting 32100 house holders with 1.6 million sq mt under green roofs in last 7 years.





**2nd World Forum on
Urban Forests**

Washington DC, 2023

Central Medians



Greenery was developed in all central verges of roads with Trees & Flowering shrubs





- Total stretch: 158Km
- 28 Radial Roads (307 Km) connects with the ORR
- Express Way is provided with Fencing
- 14 Entry and Exit Junctions
- 21 Interchange Locations
- The total plants planted on ORR are 77,35,229 Nos. as on 2022- 23





- 36 Flyovers were developed with underneath greenery





Vertical Gardens for 129 pillars under flyovers & on bridges





Vertical Gardens



Shot on OnePlus
Powered by Triple Camera



**2nd World Forum on
Urban Forests**

Washington DC, 2023

Green Curtains



Developed on road margins at **56 Locations**





- Restoration of lakes to increase the ground water table with clean water
- Maintain the water balance in the lakes
- Improvement of Lake ecosystem
- 66 lakes are fully restored in Hyderabad city





Lake View Park, Khairatabad

- Lake View park has been developed with lot of tree cover **After**

Before





Lakes Restoration & Beautification





- Protection of Existing Greens, wood lots and water bodies
- (30 million in 5 years) massive afforestation programme
- Dedicated tree line along all the roads
- Development of parks
- Involvement of Colony Welfare Associations in maintenance of parks
- Free distribution of saplings through 600 centrally located nurseries
- Development of Urban Parks in Forest Areas adjoining residential areas





- Lake Restoration
- Developing Tiny Forests
- Theme parks to attract butterflies & birds in lakes
- Implementation of WALTA Act
- Tree protection committee
- Amendment of Municipal Act





- Percentage Forest Cover :
24.05%
- **Telangana Ku Haritha Haram** i.e.
(Green Garland to Telangana
State) is a large-scale tree-
planting program in active
collaboration with community
organisations
- The program envisages
increasing the tree cover from
21% to 23%





- All sectors of the society are willingly participating in the planting programme.
- Student community is involved in a big way.
- Huge planting is taken up on farm bunds to augment the income of farmers.
- The biggest support is coming from the general public
- The state Government has amended the Panchayati Raj and Municipal Acts
- Nurseries have been established in each and every Gram Panchayat and Municipality





- The planting material is given free of cost
- A provision for 10% Green Budget has been made
- Continuous funds are made available and so far more than Rs. 106350 million have been spent
- All the Forest Blocks in and around Cities and Towns are being developed as Urban Forest Parks





- Success of Plantations depend on quality nursery stock
- Total 14,864 nurseries are established in the state.





**2nd World Forum on
Urban Forests**
Washington DC, 2023

14,864 nurseries have been established in the State





Few Glimpses of Transformation



NOW



NOW





**2nd World Forum on
Urban Forests**

Washington DC, 2023

Lung Spaces created in Colonies



VELLANDU MUNICIPALITY





Densification of Parks through Tree Planting





- A Yadadri model concept is developed on the lines of Miyawaki method to develop tiny forests within the colonies to act urban lung spaces. Such plantations are developed in **50**



Institutional Plantations in Hyderabad City





- Hydrocarbon related emissions and particulate matter are the major pollutants on the roadside.
- The greenery would help in reducing Air, Noise and Dust pollution, provides bio-aesthetic environment to the commuting public.
- The plantation will be in multiple rows along National Highways.

- Single rows in case of Internal roads



Roadside Plantations



Road Medians in the City




Greenery along Link Roads & Radial Roads



1,00,691 Kilometers/ 62,566 miles of roadside plantation taken up throughout the state

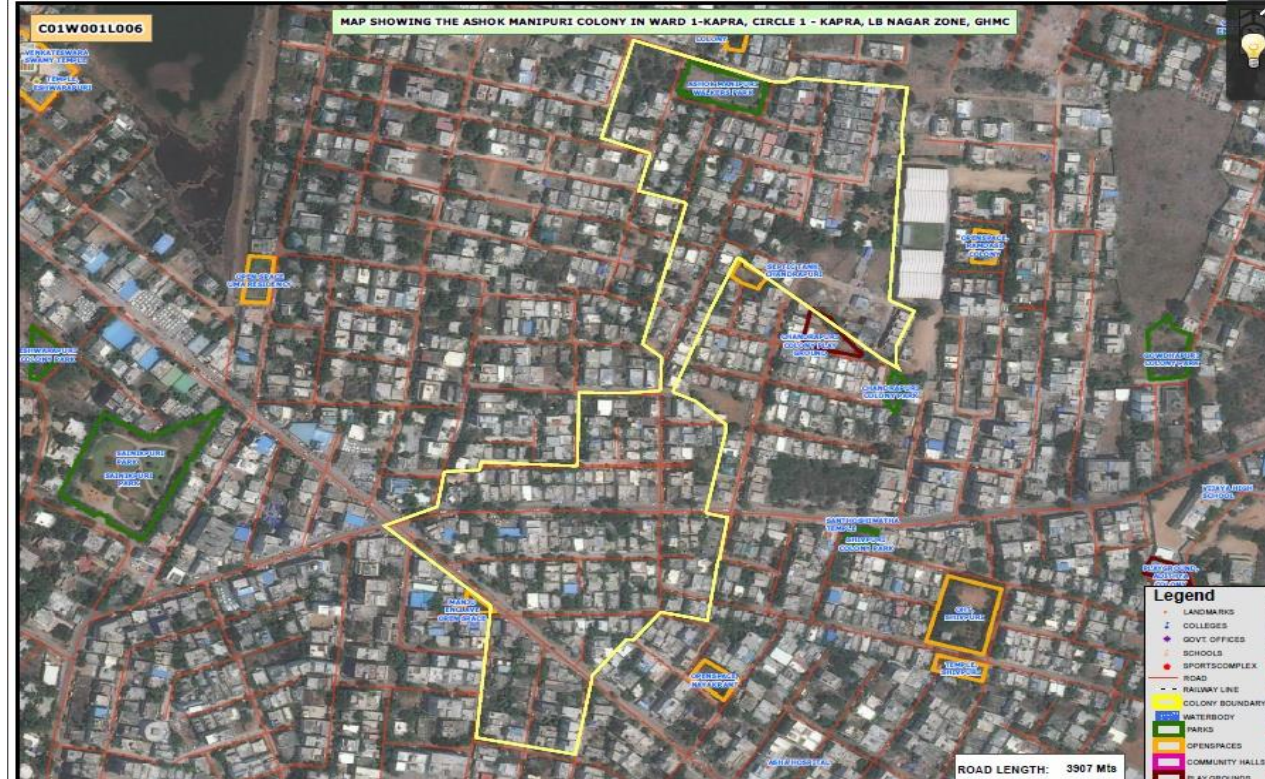
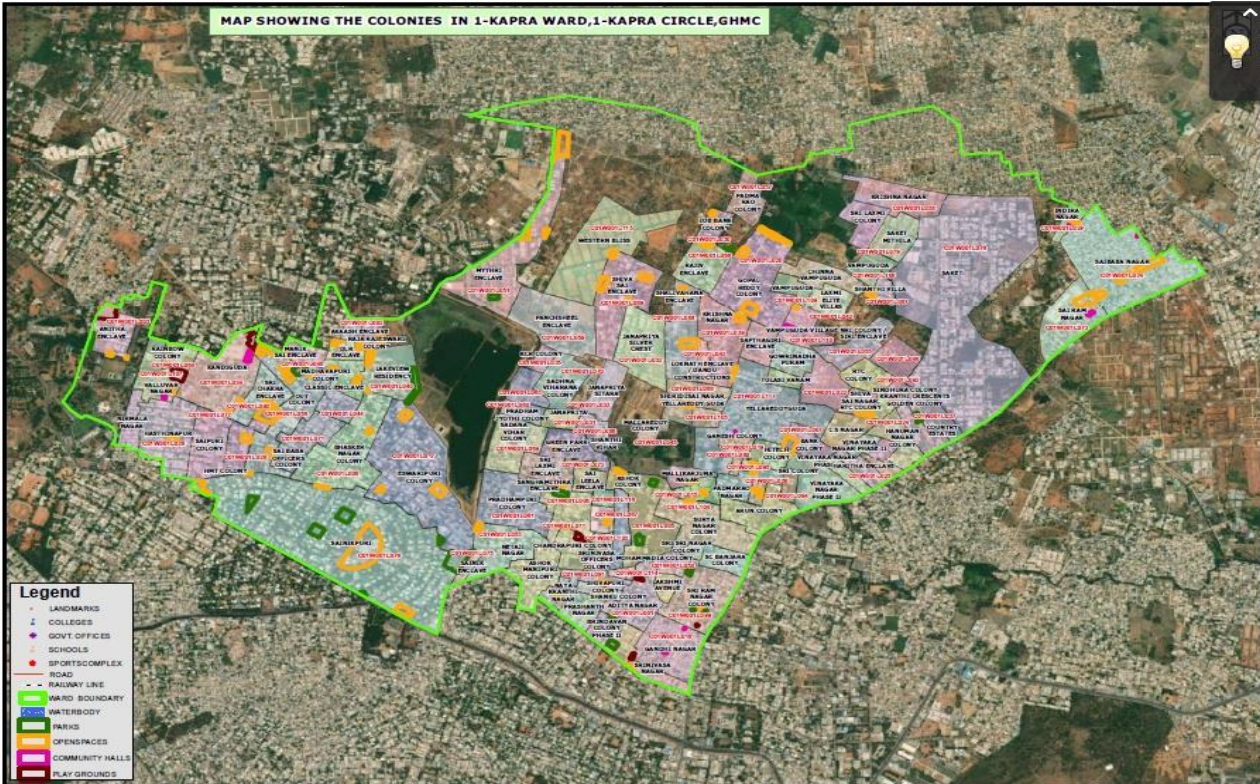


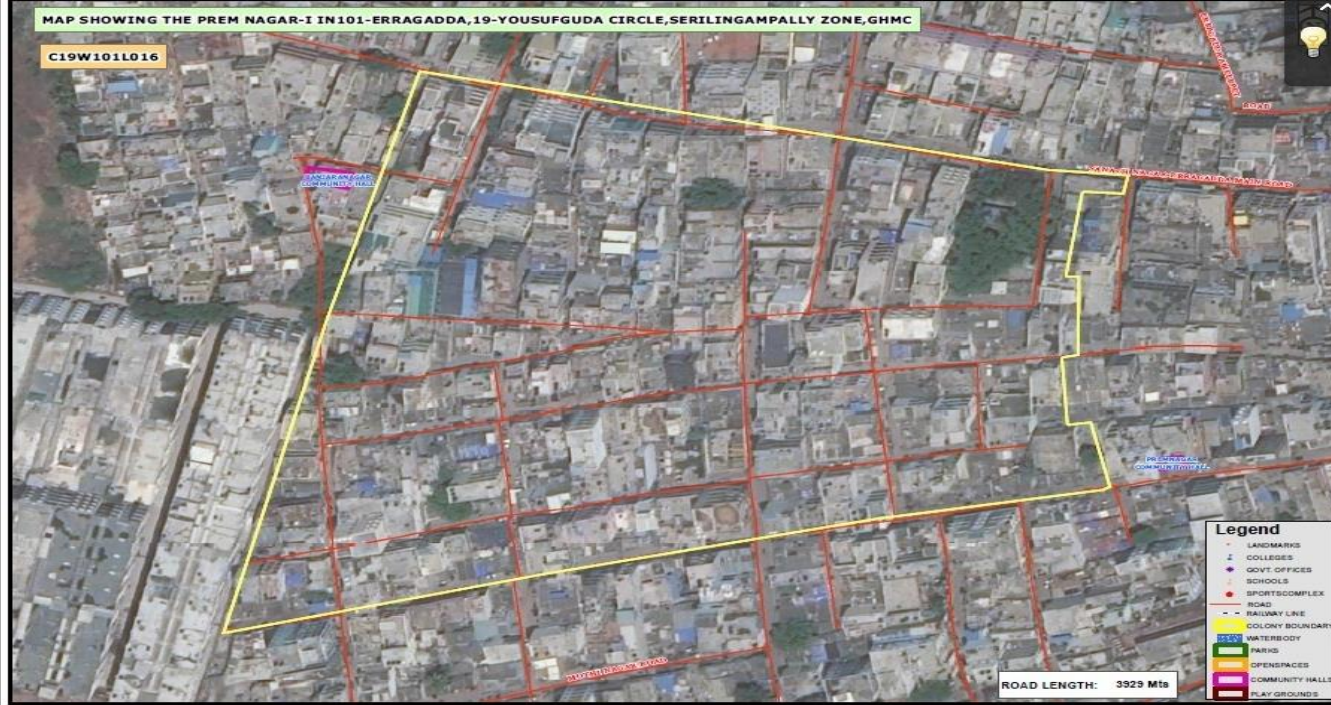
 Warangal Highway



Inch by Inch Colony Plantations

- There are 4846 colonies in GHMC area.
- Concept is to take the colony as the smallest unit and take up plantation in every available space of the colony to saturation level & declare the colony as saturated for plantation.



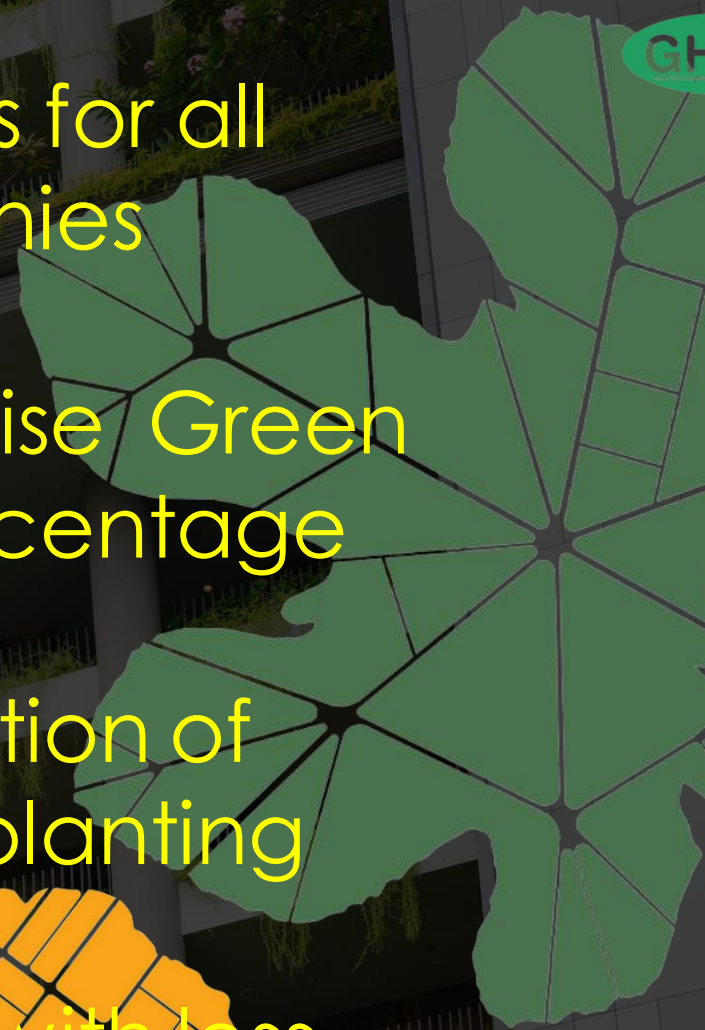


- GIS Layers for all 4846 Colonies

- Colony wise Green Cover Percentage

- Identification of Areas for planting

- Colonies with less green cover taken on priority



Residential Colony Plantations



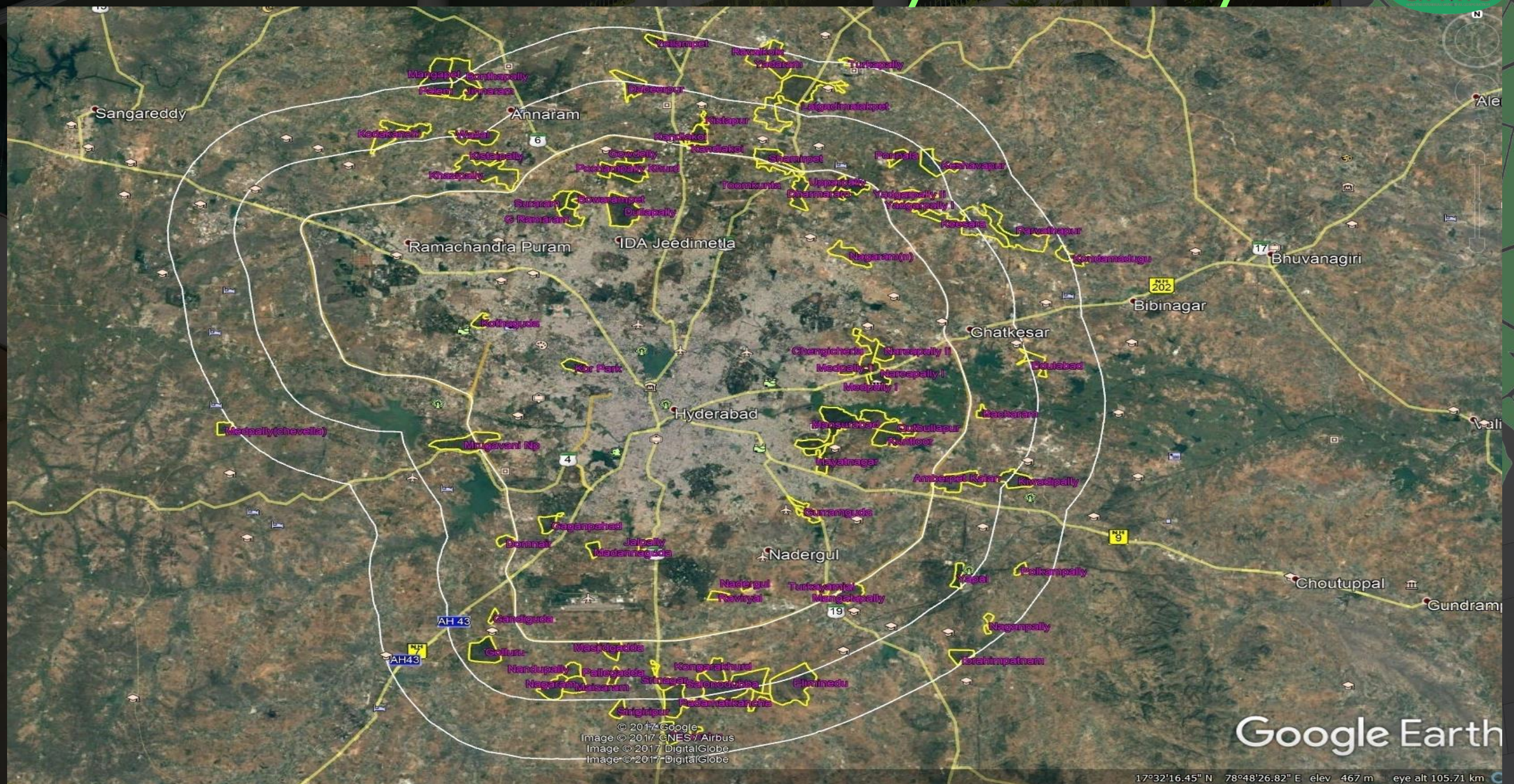


**2nd World Forum on
Urban Forests**
Washington DC, 2023

PLANTATIONS IN HYDERABAD CITY



Forest Blocks in & around Hyderabad City



© 2017 Google
Image © 2017 CNES/Airbus
Image © 2017 DigitalGlobe
Image © 2017 DigitalGlobe

Google Earth

17°32'16.45" N 78°48'26.92" E elev 467 m eye alt 105.71 km

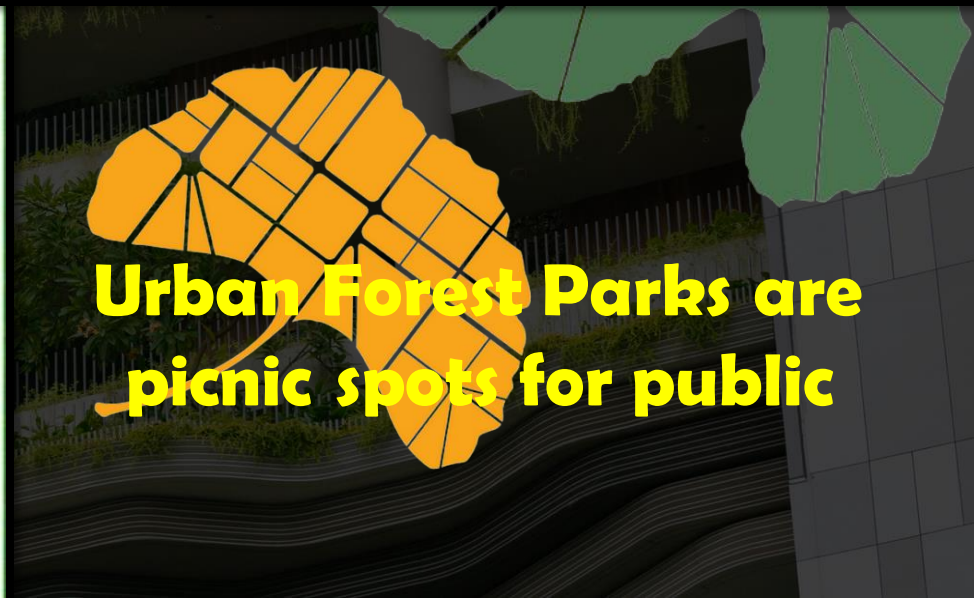


- To provide adequate lung spaces to the citizens living in and around areas by developing forest blocks.
- Provide healthy living environment
- To contribute to the growth of smart, clean green, sustainable and healthy city.
- Forest Blocks in 129 Locations with Area : 1,60,661 acres
- Urban Forest Parks in 59 Locations
- Conservation Blocks in 70 locations.



Urban Forest Parks







**2nd World Forum on
Urban Forests**

Washington DC, 2023

Greenery in Vaikunta Dhamam



Eco-friendly crematorium sites were developed for public service by keeping it in a clean and efficient condition for the smooth conduct of cremations of the departed souls.



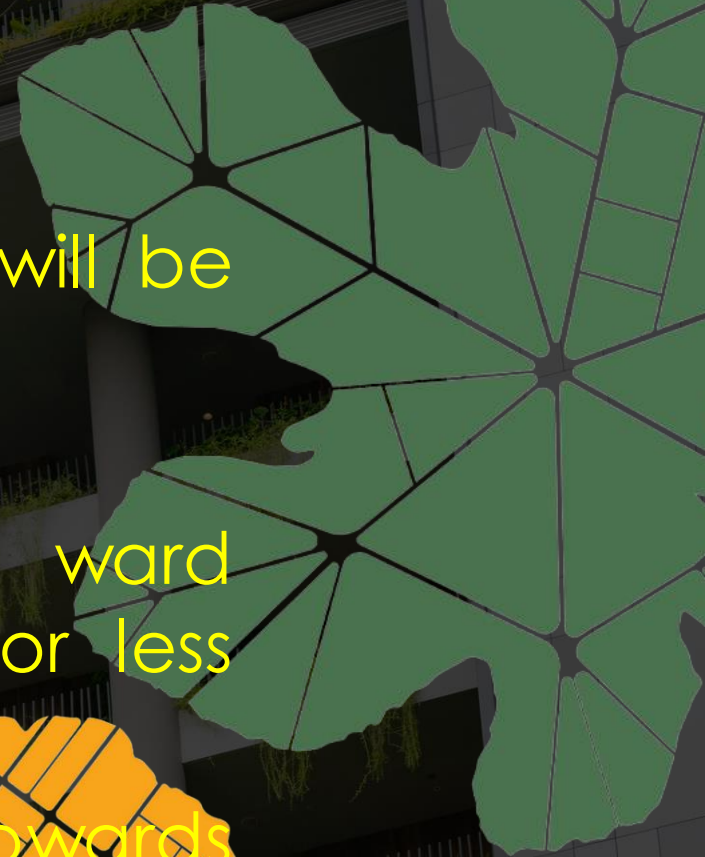


- So far Rs. 363.4 millions has been deposited in Telangana Green Fund
- Contributions from the salaries of employees working for State and Public Representatives
- For all issue & renewal of trade licences from all work contracts
- From students one time at the time of admission
- Haritha Nidhi was aimed at bringing a sense of participation among citizens of the State



Telangana Municipal / GHMC Act- 2019

- Specialized Urban Forestry wing & Green Cells
- (5) years Green action plan
- Green Budget of 10%- will be obligatory and will be treated as charged provisions in the budget
- One nursery in every ULB to cater the seedlings
- Responsibility on Public representatives-the ward member shall be disqualified and removed for less survival of plants
- The layout owner shall reserve 10% of the land towards open space for parks
- Certain number of trees shall be planted in the open area in the plot where building is being constructed



Participation by Public Representatives



Participation by Stake Holders

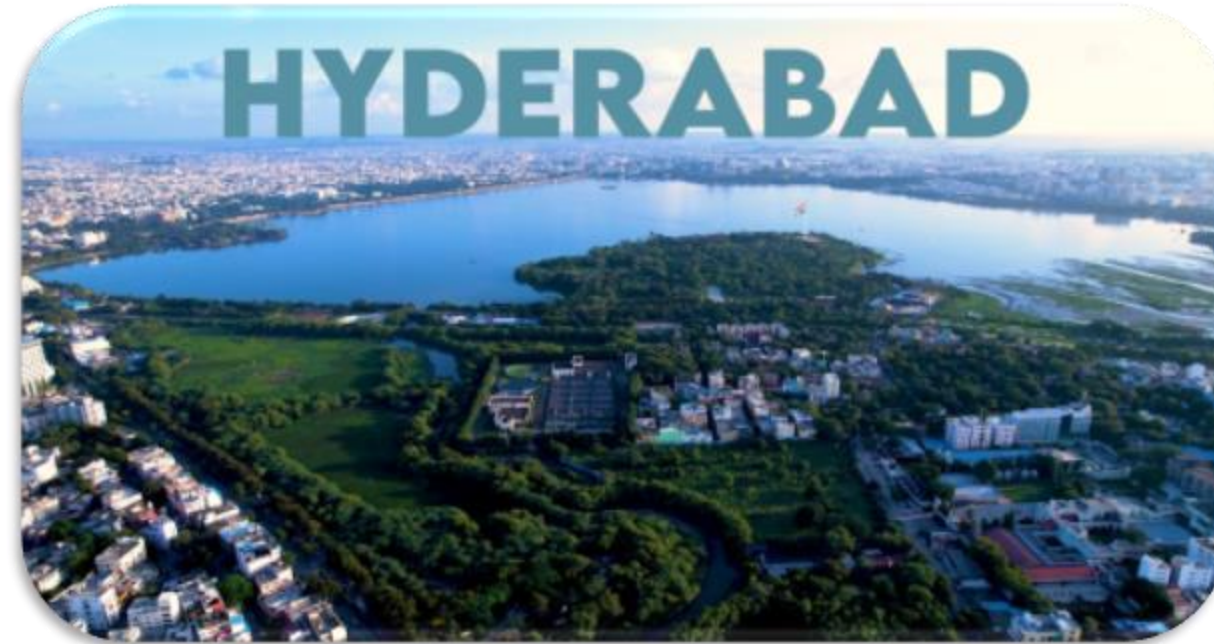


Participation by Students





- In 2012, the Greater Hyderabad Municipal Corporation (GHMC) administered the CBI within Hyderabad city.
- In this exercise the city scored 36 points out of a total 92 points.
- GHMC updated it in 2021.
- City has secured 57 out of 92 points.





- As per **India State of Forest Report 2021 (ISFR)** Hyderabad city has gained forest cover with 147% in last decade from 12.80 Sq. Miles to 31.59 Sq.Miles.
- Air Quality Index (AQI) during 2015 was as high as 159 at some locations
- In 2022 the pollution levels are decreased compared to 2015 with AQI below 100.





2nd World Forum on Urban Forests

Washington DC, 2023

AWARDS



- The Hyderabad City has been recognized as **TREE CITY** by Arbor Foundation & FAO for consecutive years 2020 & 2021
- **The City of Hyderabad** has bagged the prestigious **'World Green City Award 2022'** by **AIPH**





2nd World Forum on Urban Forests

Washington DC, 2023

Hon'ble Chief Minister, Telangana State



**WE MAY CREATE ANY AMOUNT OF WEALTH
BUT IT HAS NO MEANING
IF THERE IS NO BETTER ENVIRONMENT TO LIVE IN.
THEREFORE OUR FUNDAMENTAL DUTY IS TO
ENSURE OUR CHILDREN INHERIT CLEAN
ENVIRONMENT AND NATURAL FOREST WEALTH, TO
SUSTAIN LIFE ON PLANET IN THE TIMES TO COME**

K. Chandrasekhar Rao
Hon'ble Chief Minister, Telangana State



Destination Green Telangana



Gadwal Vijayalaxmi
MAYOR, HYDERABAD



Food and Agriculture
Organization of the
United Nations



2nd **World** **Forum on** **Urban** **Forests**

2023



**World Forum on
Urban Forests**

18 October 2023

World Forum on Urban Forests

C40's Urban Nature Accelerator: Lessons from cities



Amanda Ikert
Head of Adaptation Implementation
C40 Cities



Lessons in Transformative Urban Nature



1. Public Accountability

2. Quantified Targets



3. Quality



4. Aligning Governance

5. Valuation

The C40 Cities network

A network of 97 cities led by Mayors

Directly representing **582 million** residents

Influencing **896 million** people



AFRICA: ABIDJAN – ACCRA – ADDIS ABABA – CAPE TOWN – DAKAR – DAR ES SALAAM – DURBAN (ETHEKWINI) – EKURHULENI – FREETOWN – JOHANNESBURG – LAGOS – NAIROBI – TSHWANE
CENTRAL EAST ASIA: BEIJING – CHENGDU – DALIAN – FUZHOU – GUANGZHOU – HANGZHOU – HONG KONG – NANJING – SHANGHAI – SHENZHEN – QINGDAO – WUHAN – ZHENJIANG
EAST, SOUTHEAST ASIA & OCEANIA: AUCKLAND – BANGKOK – HANOI – HO CHI MINH CITY – JAKARTA – KUALA LUMPUR – MELBOURNE – QUEZON CITY – SEOUL – SINGAPORE – SYDNEY – TOKYO – YOKOHAMA
EUROPE: AMSTERDAM – ATHENS – BARCELONA – BERLIN – COPENHAGEN – HEIDELBERG – ISTANBUL – LISBON – LONDON – MADRID – MILAN – OSLO – PARIS – ROME – ROTTERDAM – STOCKHOLM
TEL AVIV – WARSAW | **LATIN AMERICA:** BOGOTÁ – BUENOS AIRES – CURITIBA – GUADALAJARA – LIMA – MEDELLÍN – MEXICO CITY – RIO DE JANEIRO – SALVADOR – SÃO PAULO – SANTIAGO – QUITO
NORTH AMERICA: AUSTIN – BOSTON – CHICAGO – HOUSTON – LOS ANGELES – MIAMI – MONTRÉAL – NEW ORLEANS – NEW YORK – PHILADELPHIA – PHOENIX – PORTLAND – SAN FRANCISCO – SEATTLE
TORONTO – VANCOUVER – WASHINGTON DC | **SOUTH & WEST ASIA:** AHMEDABAD – AMMAN – BENGALURU – CHENNAI – DELHI – DHAKA – DUBAI – KARACHI – KOLKATA – MUMBAI



C40 Networks supporting Urban Adaptation

Urban Flooding Network



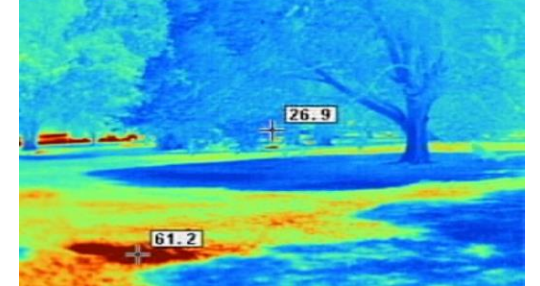
Water Security Network



Connecting Delta Cities Network



Cool Cities Network



➔ To prevent

C40 MAYORS' AGENDA FOR A GREEN AND JUST RECOVERY

**Health and wellbeing:
Give space back to people
and nature, rethink and
reclaim our streets, clean
our air and create liveable,
local communities**



C40
CITIES



Action: **Build with nature**

We will prioritise nature-based solutions (such as parks, green roofs, green walls, blue infrastructure and permeable pavements) to help reduce the risks of extreme heat, drought, flooding and vector- and water-borne disease while improving liveability and increasing physical and mental health.

C40 Urban Nature Accelerator

Making our Cities Greener and More Resilient

“To protect our communities from climate risk and help meet the goals of the Paris Agreement while improving overall health and wellbeing, our cities pledge to **increase and enhance nature in our urban environments that reduces climate risk and vulnerability**, supports wider ecosystem services, and is equitably distributed and publicly accessible, by 2030.”

The objectives of this declaration are to set inclusive and equitable targets to develop **living, climate-ready, and crisis-prepared cities**.



41 Signatories
Amman
Athens
Austin
Barcelona
Berlin
Bogotá
Buenos Aires
Chennai
Copenhagen
Curitiba
Dhaka North
Dhaka South
Delhi
Durban
Freetown
Guadalajara
Haifa (non C40)
Karachi
Lima
London
Los Angeles
Medellín
Milan
Montreal
Mumbai
New Orleans
Paris
Quezon City
Quito
Rio de Janeiro
Rome
Rotterdam
Salvador
San Francisco
San Paulo
Seattle
Stockholm
Sydney
Tel Aviv
Tokyo
Toronto

PATHWAY 1 QUALITY TOTAL COVER

Heat & Water related risk



30-40% of the total built-up city surface area is:
a.) **Green spaces** (e.g., street trees & urban forests, parks, building integrated vegetation)
and/or
b.) **Permeable spaces** (e.g., pavements, infiltration trenches, swales, detention basins, regenerative urban agriculture)
Which favours protecting and restoring **biodiverse and climate resilient ecosystems**

PATHWAY 2 EQUITABLE SPATIAL DISTRIBUTION

Accessibility and connectivity



70% of the city population has access to a fit for purpose green or blue space within **15 minutes**⁷ – equitably prioritised to maximise accessibility and connectivity to nature for the most vulnerable

C40
CITIES

- Signatories**
- Amman
 - Athens
 - Austin
 - Barcelona
 - Berlin
 - Bogotá
 - Buenos Aires
 - Chennai
 - Copenhagen
 - Curitiba
 - Dhaka North
 - Dhaka South
 - Delhi
 - Durban
 - Freetown
 - Guadalajara
 - Haifa (non C40)
 - Karachi
 - Lima
 - London
 - Los Angeles
 - Medellín
 - Milan
 - Montreal
 - Mumbai
 - New Orleans
 - Paris
 - Quezon City
 - Quito
 - Río de Janeiro
 - Rome
 - Rotterdam
 - Salvador
 - San Francisco
 - San Paulo
 - Seattle
 - Stockholm
 - Sydney
 - Tel Aviv
 - Tokyo
 - Toronto

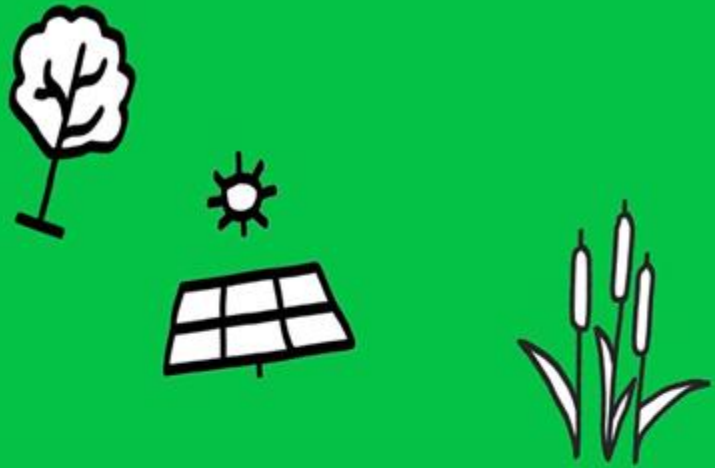
C40 Urban Nature Accelerator **Requirements**

TWO YEARS COMMITMENTS

- Make nature **goals public** & publicly **report annually** on progress
- Develop support and skills building programmes for **green jobs**
- Develop a process for **involving vulnerable and marginalized communities**
- **Map** current and expected **climate risks** and vulnerability
- Conduct a **gap analysis** and mapping to show where new and improved greening is needed
- Accelerate action to **address governance barriers** to implementation
- Mobilize **access to investments** and resources

FIVE YEARS COMMITMENTS

- **Implement** new or enhanced public green spaces and green streetscapes, in areas with the greatest impact on the most vulnerable
- **Complete a baseline natural vegetation inventory** and undertake natural capital accounting to raise awareness of the associated value of urban nature
- Develop **new inclusive governance frameworks**, practices and programmes
- Update the city's **climate action plan adaptation actions** to reflect ambitious nature targets



SNAPSHOTS OF URBAN NATURE

A letter to nature in **MEDELLÍN**



A letter to nature in **RIO DE JANEIRO**



A letter to nature in **PORTLAND**



A letter to nature in **DURBAN**



A letter to nature in **COPENHAGEN**



A letter to nature in **MUMBAI**



#AFutureWithNature is possible, if we make it a priority today.

Together, we can create cities that are greener, healthier and more resilient.



A letter to nature in **AUCKLAND**



A letter to nature in **BARCELONA**



A letter to nature in **STOCKHOLM**



#AFutureWithNature

#AFutureWithNature

#AFutureWithNature

#AFutureWithNature

#AFutureWithNature

#AFutureWithNature

“In order to be effective, the ecological transition needs to be socially desirable”

Alexander Langer



- Signatories**
- Amman
 - Athens
 - Austin
 - Barcelona
 - Berlin
 - Bogotá
 - Buenos Aires
 - Chennai
 - Copenhagen
 - Curitiba
 - Dhaka North
 - Dhaka South
 - Delhi
 - Durban
 - Freetown
 - Guadalajara
 - Haifa (non C40)
 - Karachi
 - Lima
 - London
 - Los Angeles
 - Medellín
 - Milan
 - Montreal
 - Mumbai
 - New Orleans
 - Paris
 - Quezon City
 - Quito
 - Río de Janeiro
 - Rome
 - Rotterdam
 - Salvador
 - San Francisco
 - San Paulo
 - Seattle
 - Stockholm
 - Sydney
 - Tel Aviv
 - Tokyo
 - Toronto

C40 Urban Nature Accelerator **Targets**

**PATHWAY 1:
QUALITY TOTAL COVER**

Heat & Water related risk



30-40% of the total built-up city surface area is:

Green spaces

through street trees & urban forests, parks, gardens, building integrated vegetation

and/or;

Permeable spaces

through green roofs, roads, pavements, green ground, infiltration trenches, swales, detention basins, regenerative urban agriculture



**PATHWAY 2:
EQUITABLE SPATIAL DISTRIBUTION**

Accessibility and connectivity



70% of the city population has access to a fit for purpose green and/or blue space within 15 minutes

Equitably prioritised to maximise connectivity and accessibility to nature for the most vulnerable





COP15 reaches historic agreement to protect biodiversity

An agreement has been reached to protect 30% of the planet's land and 30% of its ocean by 2030, among a host of new targets

EN 中文

The New York Times

Nearly Every Country Signs On to a Sweeping Deal to Protect Nature

Roughly 190 nations, aiming to halt a dangerous decline in biodiversity, agreed to preserve 30 percent of the planet's land and seas. The United States is not officially a participant.

MONTREAL, Quebec — Roughly 190 countries early on Monday approved a sweeping United Nations agreement to protect 30 percent of the planet's land and oceans by 2030 and to take a slew of other measures against biodiversity loss, a mounting under-the-radar crisis that, if left unchecked, jeopardizes the planet's food and water supplies as well as the existence of untold species around the world.



The Global Biodiversity Framework is adopted at COP 15. Photo by CBD



European
Commission

NEWS ARTICLE | 21 June 2023 | Directorate-General for Environment

Increasing tree coverage to 30% in European cities could reduce deaths linked to urban heat island effect

Issue 602: The cooling effect of trees is well known, but no study has so far aimed to quantify how many premature deaths might be prevented through this ecosystem service.

C40 workshop

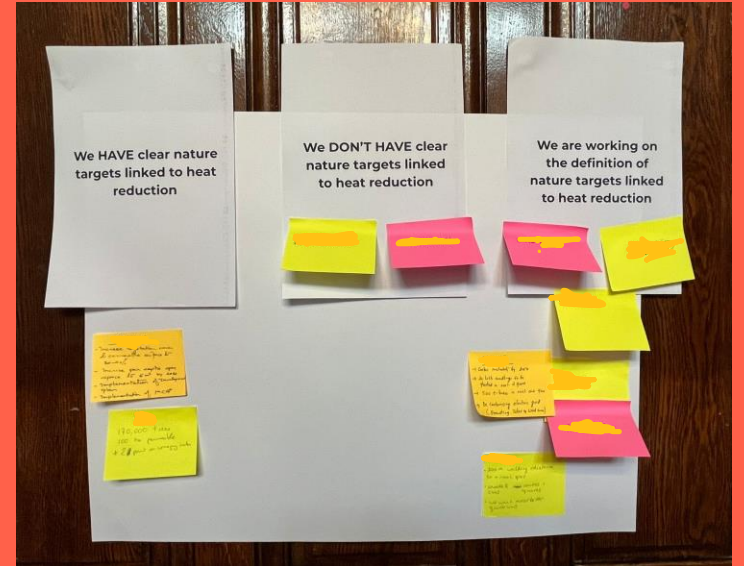
Managing Heat with Nature

Day 1: Bringing the temperature down in our cities

09/12 October - Paris, France

Paris, photo by James O. Neil - Getty Images

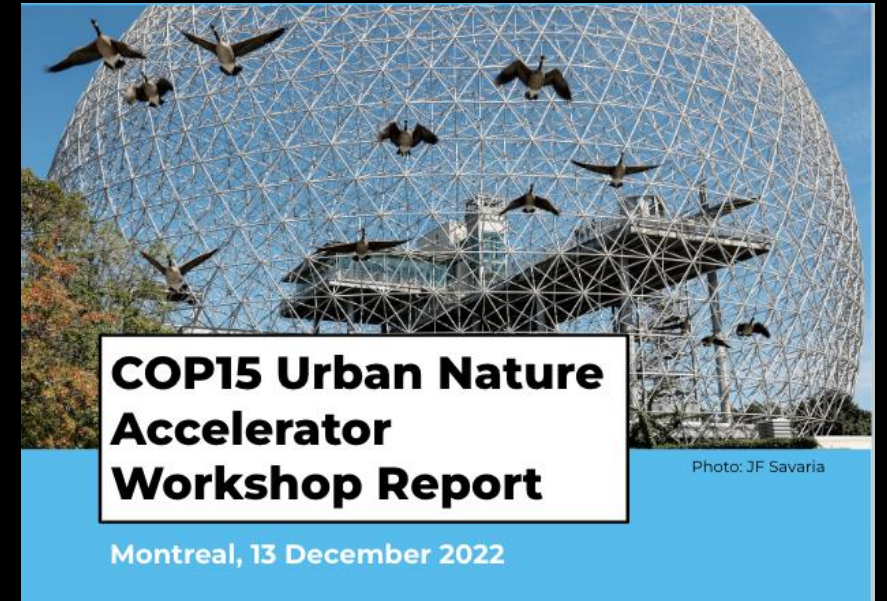
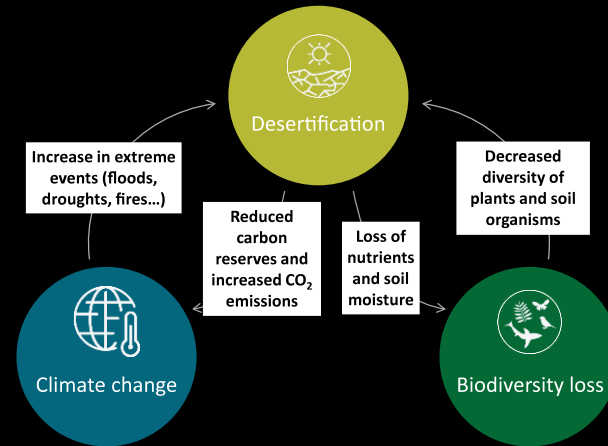
C40
CITIES



Aligning the Rio Conventions

C40 CITIES @c40cities

As this year's #COP15 summit in Montreal kicks off, let's take a look at the work C40 and Mayor @Val_Plante are doing for #biodiversity and urban nature.



Session	Challenge Question	Seeds for Discussion
Nature As Urban Culture	How do we support a public cultural shift to prioritize nature in cities?	Tokyo Toronto
Reconciling Biodiversity, Climate Risk and Equity in our Cities	Are our climate risk reduction, biodiversity and equity goals in competition?	San Francisco Paris Los Angeles
15 minute one-on-ones	Bilateral meetings between cities	
A Natural Economy: Finance and Green Jobs	How can we build the value of nature into the economies of our cities?	Montreal Freetown



Urban Rewilding


**The value and co-benefits
of nature in urban spaces**



City Biodiversity Indices


Secretariat of the Convention on Biological Diversity

CBD Technical Series No. 98



HANDBOOK ON THE SINGAPORE INDEX ON CITIES' BIODIVERSITY

(also known as the City Biodiversity Index)



UN environment programme

Convention on Biological Diversity

NATIONAL PARKS



Berlin



Alignment of Actors



Medellin

MEDELLÍN CORREDORES VERDES



Corredores verdes en localidades

- 1 Q. La Bermejala
- 2 Q. El Molino
- 3 Q. La Bermejala
- 4 Q. La Iguala
- 5 Q. La Polanés
- 6 Q. La Huera
- 7 Q. Ana Díaz
- 8 Q. Altavista
- 9 Q. La Gueyabala
- 10 Q. La Poblada
- 11 Q. La Presidenta
- 12 Q. La Volcana

Corredores verdes en vías

- 1 Paseo Bolívar
- 2 Carrera Carabobo
- 3 Avenida Barranquilla
- 4 Avenida La Playa
- 5 Avenida Juan del Corral
- 6 Avenida Fierro
- 7 Avenida Colombia
- 8 Calle Los Huesos
- 9 Avenida Oriental
- 10 Calle 42a
- 11 Avenida Bolívariana
- 12 Avenida San Juan
- 13 Avenida Nutibara
- 14 Avenida Jardín
- 15 Calle 33
- 16 Calle 29
- 17 Calle 33
- 18 Calle 38
- 19 Avenida Guayabal
- 20 Carrera 42
- 21 Carrera 65
- 22 Carrera 41

Tokyo





AN EXAMPLE OF GREENING STREETS IN LONDON BOROUGH OF BRENT

THE PROJECT
WOULD BREAK
EVEN IN ITS
3RD YEAR



DELIVER
£1.9M IN BENEFITS
TO THE LOCAL
COMMUNITY



£810K OF WHICH
IS DERIVED
FROM MENTAL
WELLBEING
BENEFITS



Freetown



Montréal 

Montreal's Adaptation Budgeting Methodology

C40 City Clinic
May 31st 2023

Nicolas Dedovic, Acting Head of Division,
Office of Ecological Transition and Resilience

Marie-Ève Marquis, ing., M. Env.
Office of Ecological Transition and Resilience





**URBAN FOREST
STRATEGY
MAKING A GREAT
CITY GREENER
2012-2032**



City of Melbourne's Urban forest Strategy A Decade On

Tiffany Crawford
Co-Chief Heat Officer
Director, Climate Change
& City Resilience



CITY OF MELBOURNE

Melbourne's Rapid Landscape changes













CITY OF MELBOURNE



Overall

23% loss in 10 years

39% loss in 20 years

Heritage Landscapes

35% loss in 10 years

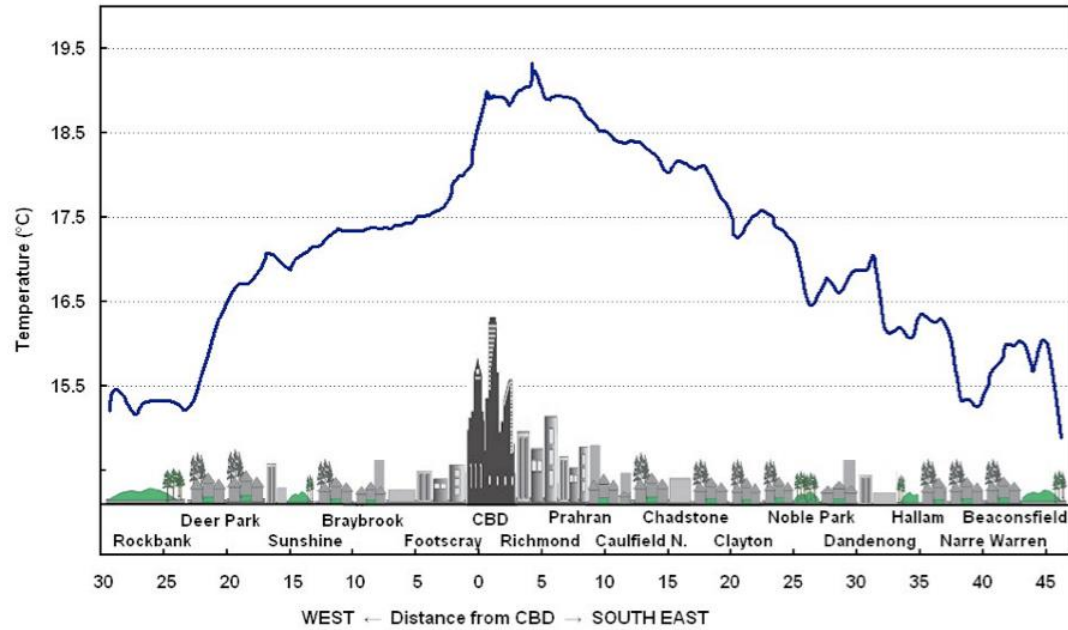
58% loss in 20 years

Useful Life Expectancy





- 80,000 public trees
- \$800 million value
- Targets:
 - Increase canopy cover by 40%
 - Increase tree species diversity
 - Improve vegetation health
 - Improve soil moisture and water quality
 - Inform and consult the community

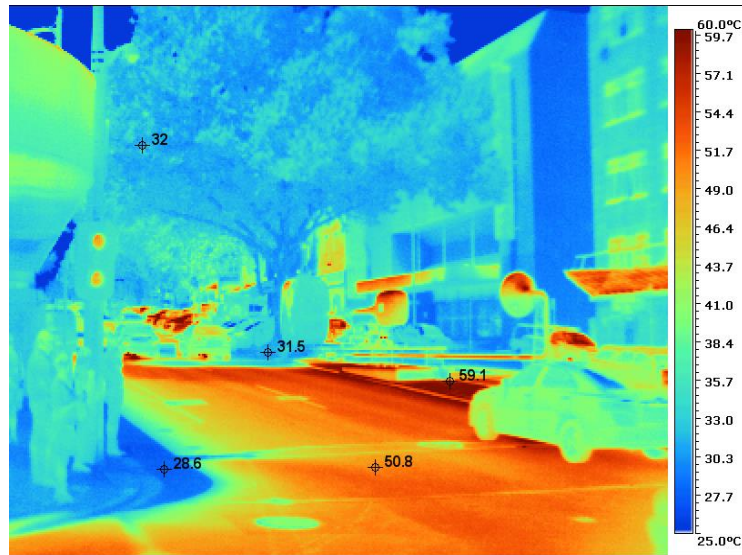


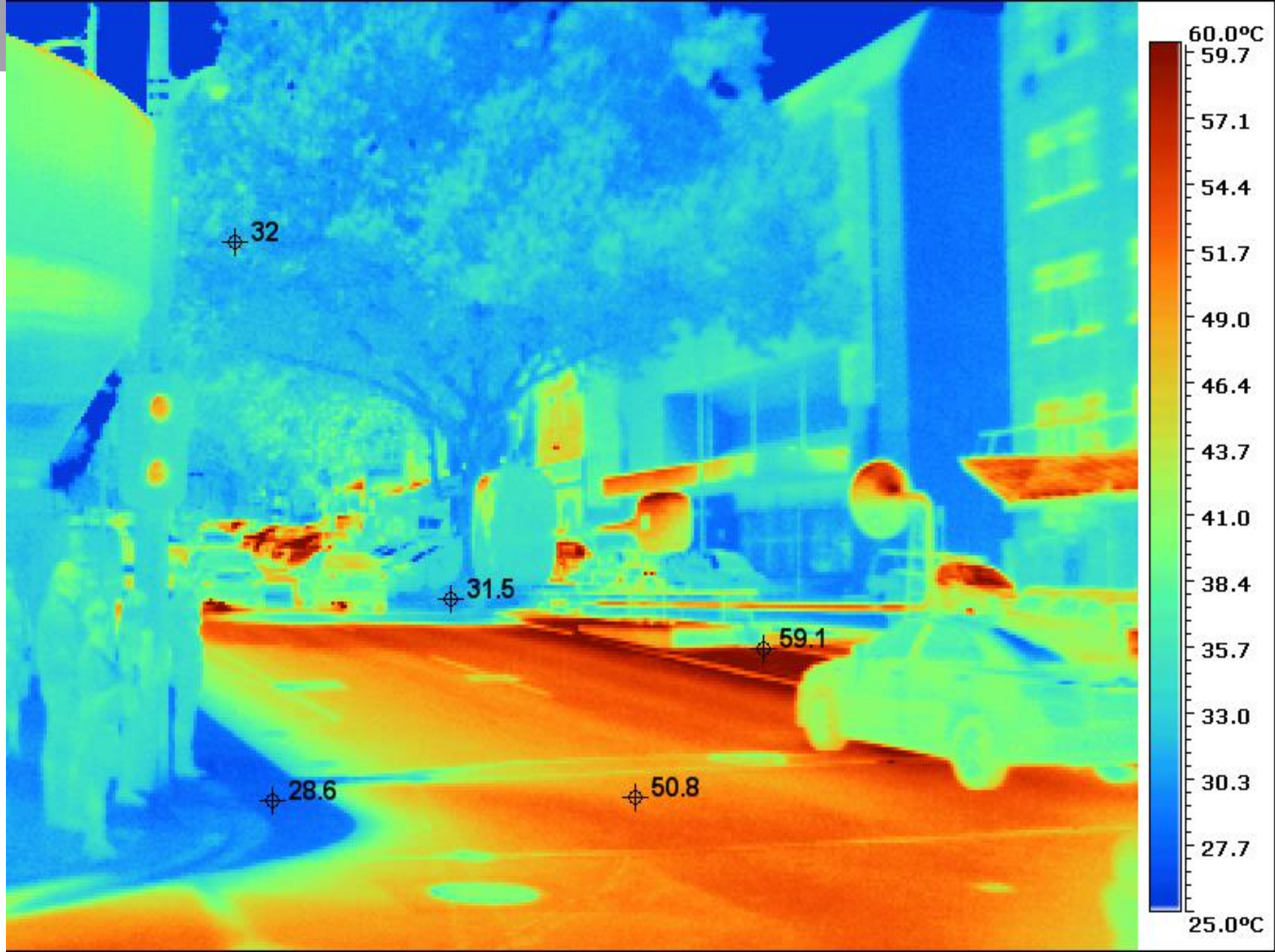
4:22PM Saturday February 07, 2009

CITY'S HOTTEST DAY EVER

46.4

City swelters through hottest day ever recorded
Melbourne tops 46 degrees as state suffers in heat.
'Worst day in history' Keep cool Weather





Key successes:

- Evidence-based and data driven
- Research partnerships
- Regular monitoring
- Engaged community

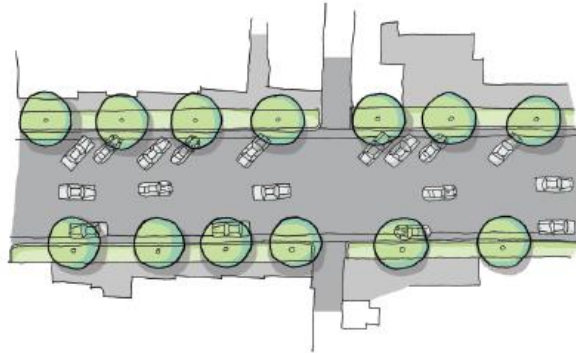
Improvement opportunities:

- 30% of priority streetscape are unable to be planted.
- More equitable distribution of planting
- More diverse community views
- Improved data inputs:
 - Biosecurity
 - Habitat connectivity
 - Heat vulnerability

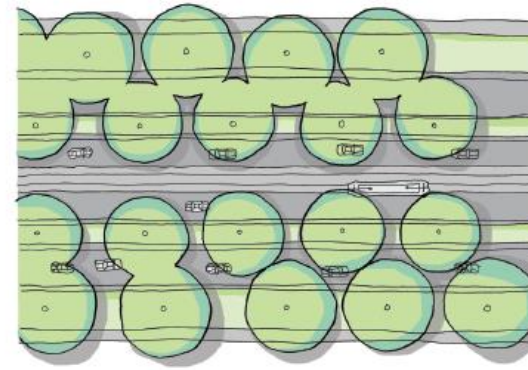


TREE CANOPY COVER

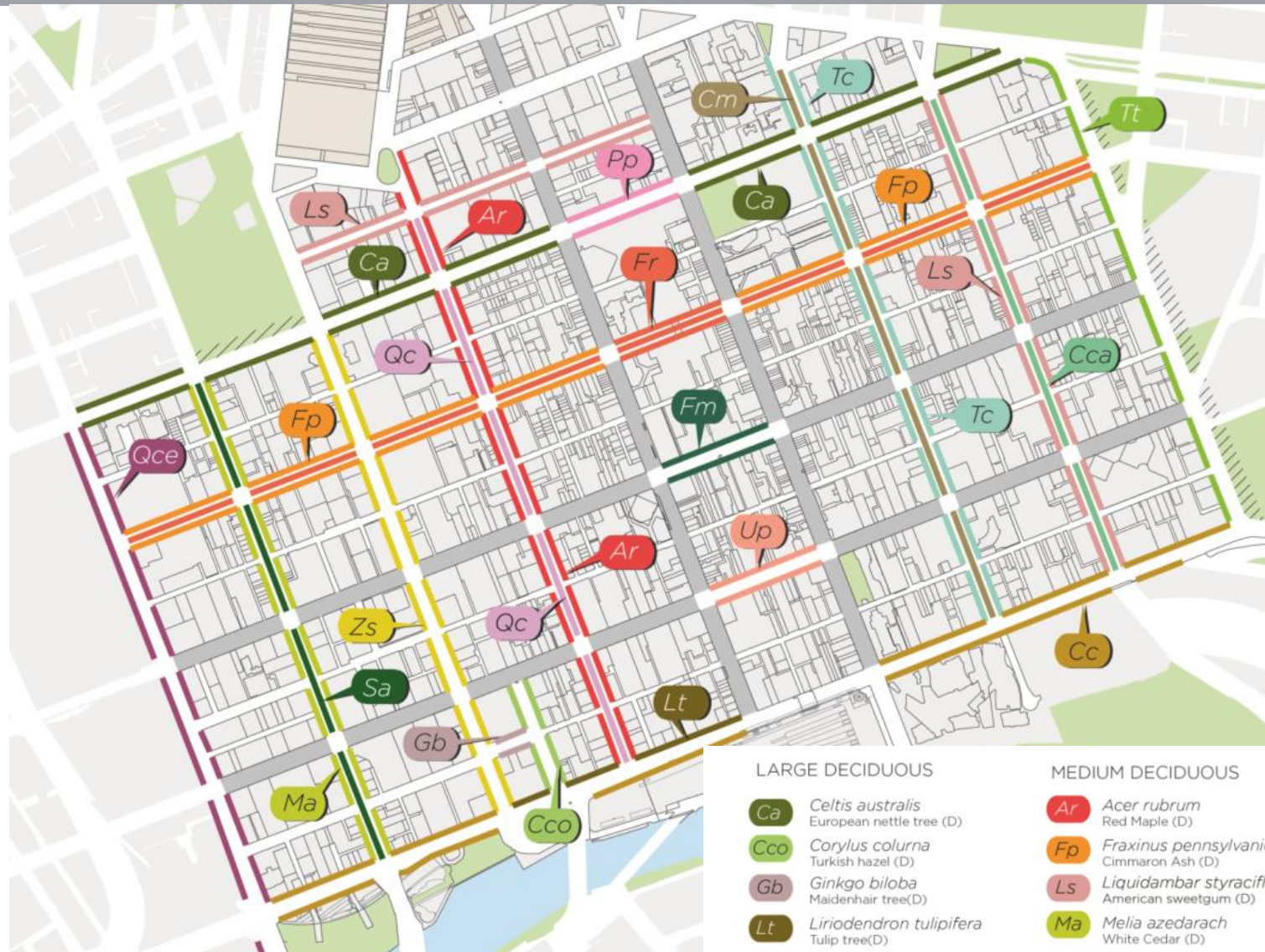
22% (2012)



40% (2040)



Creating species diversity



LARGE DECIDUOUS

- Ca** *Celtis australis*
European nettle tree (D)
- Cco** *Corylus colurna*
Turkish hazel (D)
- Gb** *Ginkgo biloba*
Maidenhair tree(D)
- Lt** *Liriodendron tulipifera*
Tulip tree(D)
- Up** *Ulmus procera*
English Elm (D)
- Qc** *Quercus canariensis*
Algerian oak (D)
- Qce** *Quercus cerris*
Turkey oak (D)
- Platanus × acerifolia**
London Plane (D)

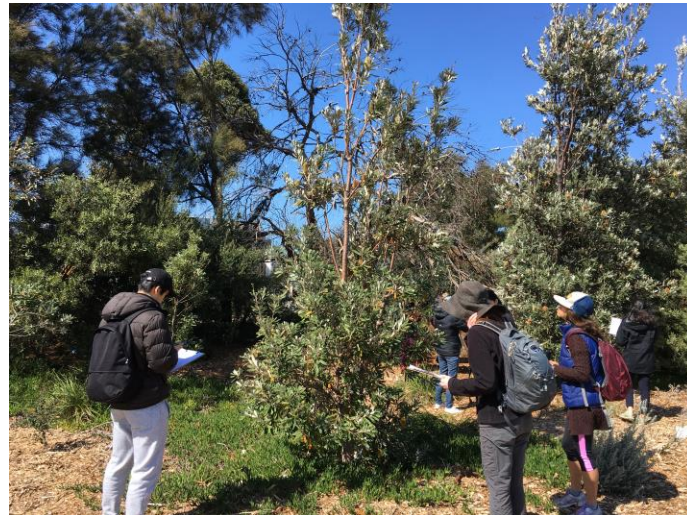
MEDIUM DECIDUOUS

- Ar** *Acer rubrum*
Red Maple (D)
- Fp** *Fraxinus pennsylvanica*
Cimmaron Ash (D)
- Ls** *Liquidambar styraciflua*
American sweetgum (D)
- Ma** *Melia azedarach*
White Cedar (D)
- Tc** *Tilia cordata*
Small-leaved Lime (D)
- Tt** *Tipuana tipu*
Rosewood (D)
- Zs** *Zelkova serrata*
Green Vase (D)

LARGE EVERGREEN

- Cc** *Corymbia citriodora*
Lemon-scented gum (E)
- Cca** *Cinnamomum camphora*
Camphor tree (E)
- Cm** *Corymbia maculata*
Spotted Gum (E)
- Fm** *Ficus macrophylla*
Moreton Bay Fig (E)
- Fr** *Ficus rubiginosa*
Port Jackson fig (E)
- Pp** *Pinus pinea*
Umbrella pine (E)
- Sa** *Schinus areira*
Pepper Tree (E)

Citizen science data collection





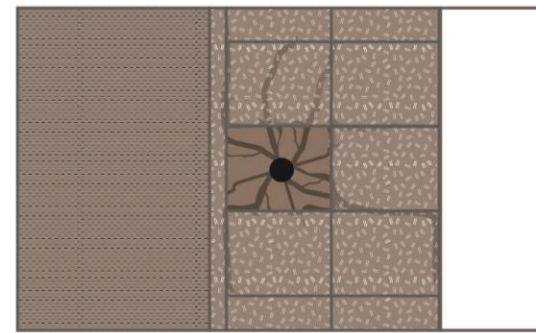
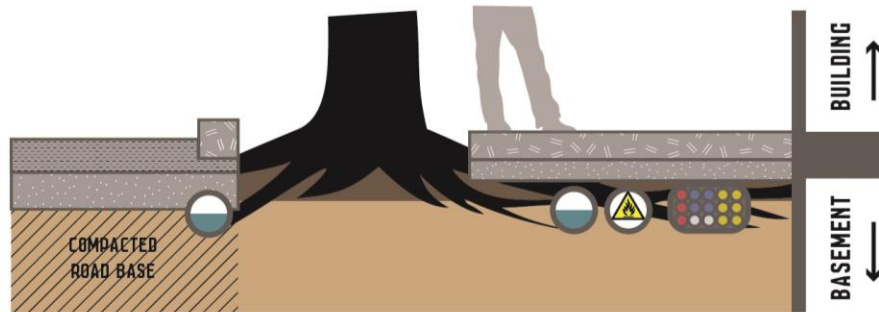


Challenges



CITY OF MELBOURNE

Contested urban space and hostile growing environments



Climate and biodiversity emergency



239

City of Melbourne
Municipality



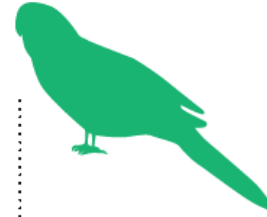
161

Royal
Park



159

Domain Parklands
(including Royal
Botanical Gardens)



153

Westgate
Park



72

Fitzroy
Gardens



31

Carlton
Gardens





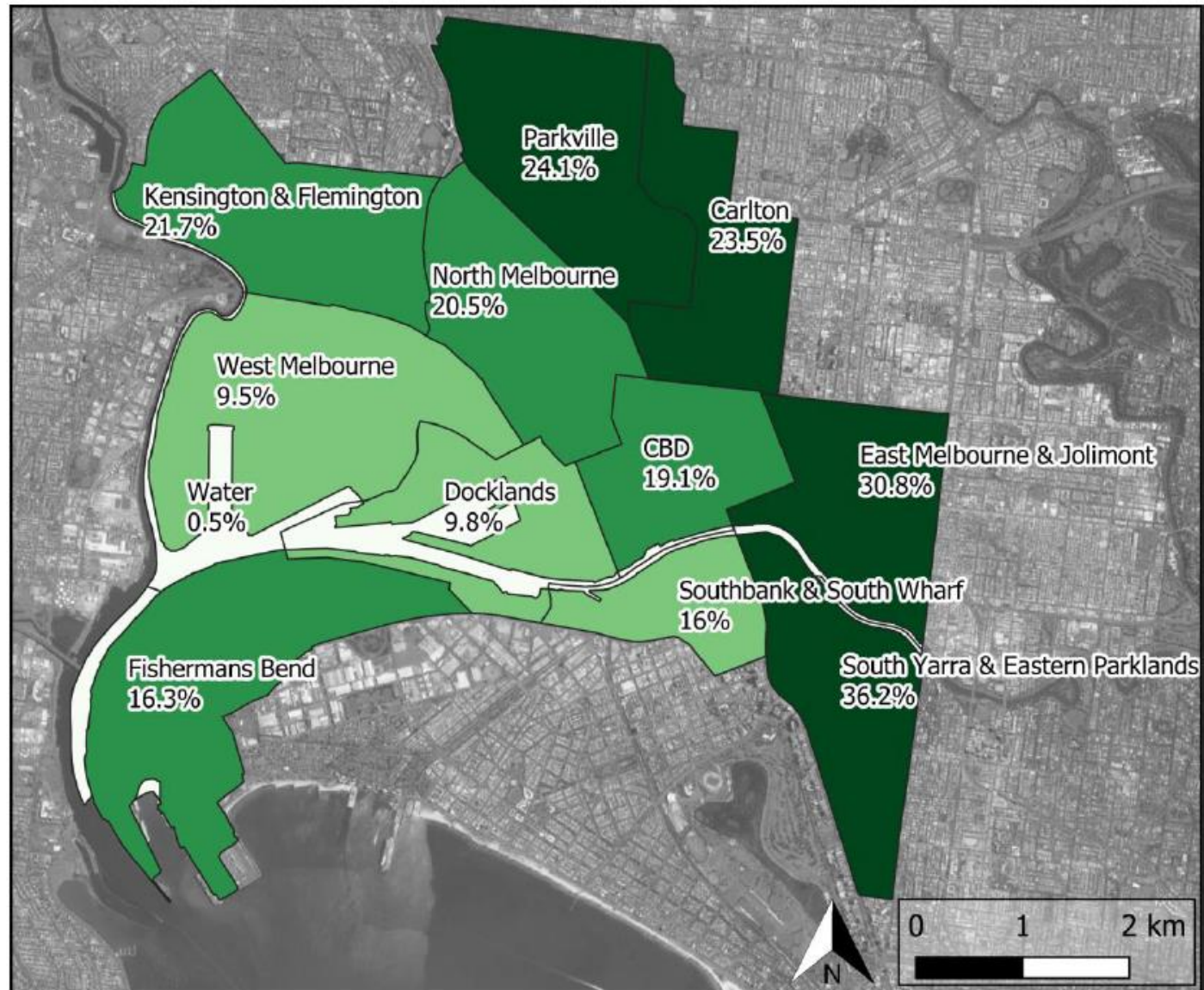


Figure 11: Thematic map showing canopy cover as a percentage of public land within precinct area. The darker green indicates higher relative canopy cover.



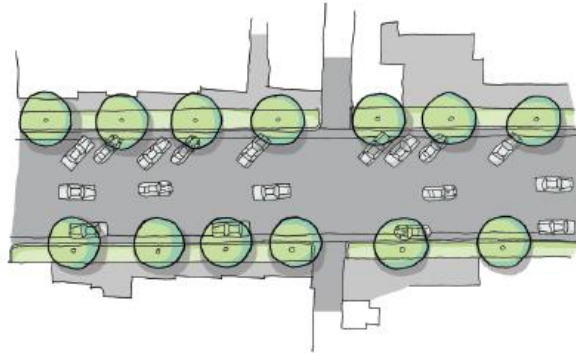
Opportunities



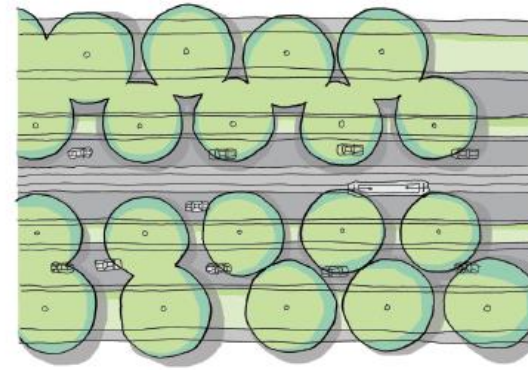
CITY OF MELBOURNE

TREE CANOPY COVER

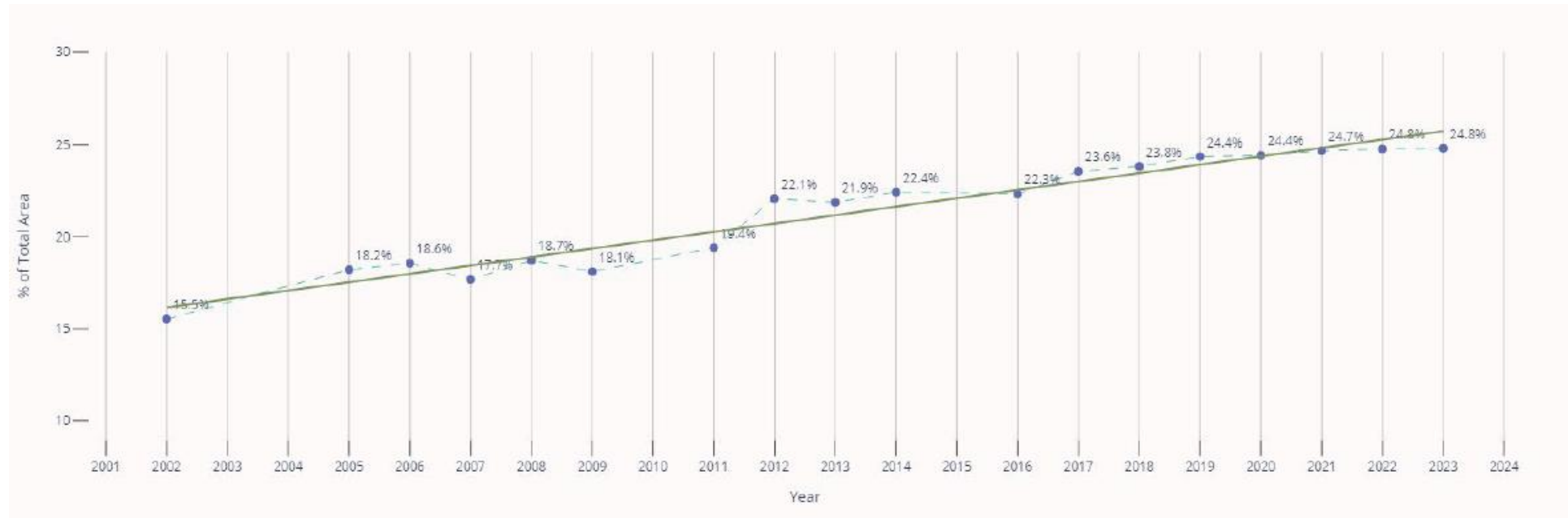
22% (2012)



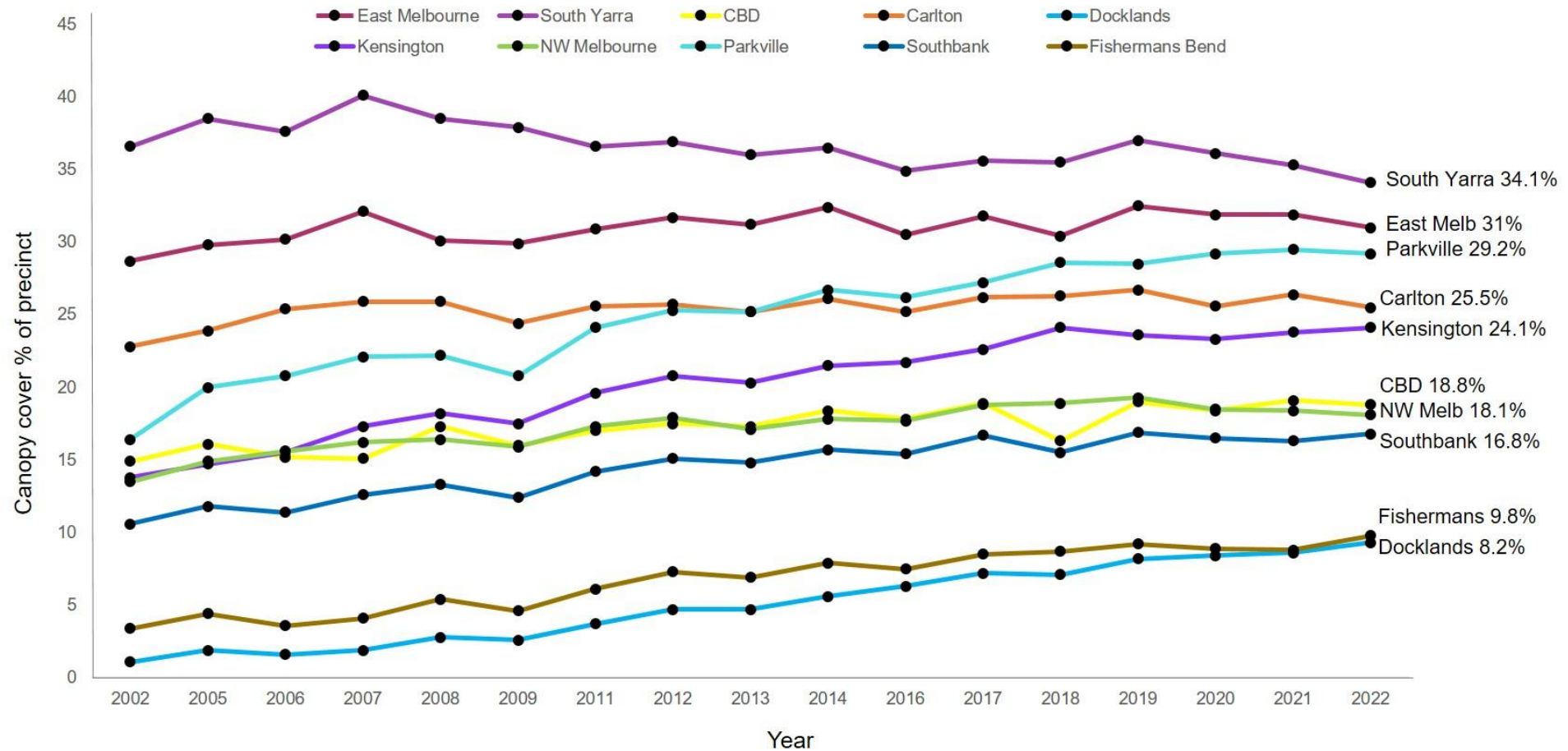
40% (2040)



Tree canopy cover through time



Canopy cover distribution



Example: Canopy uplift program

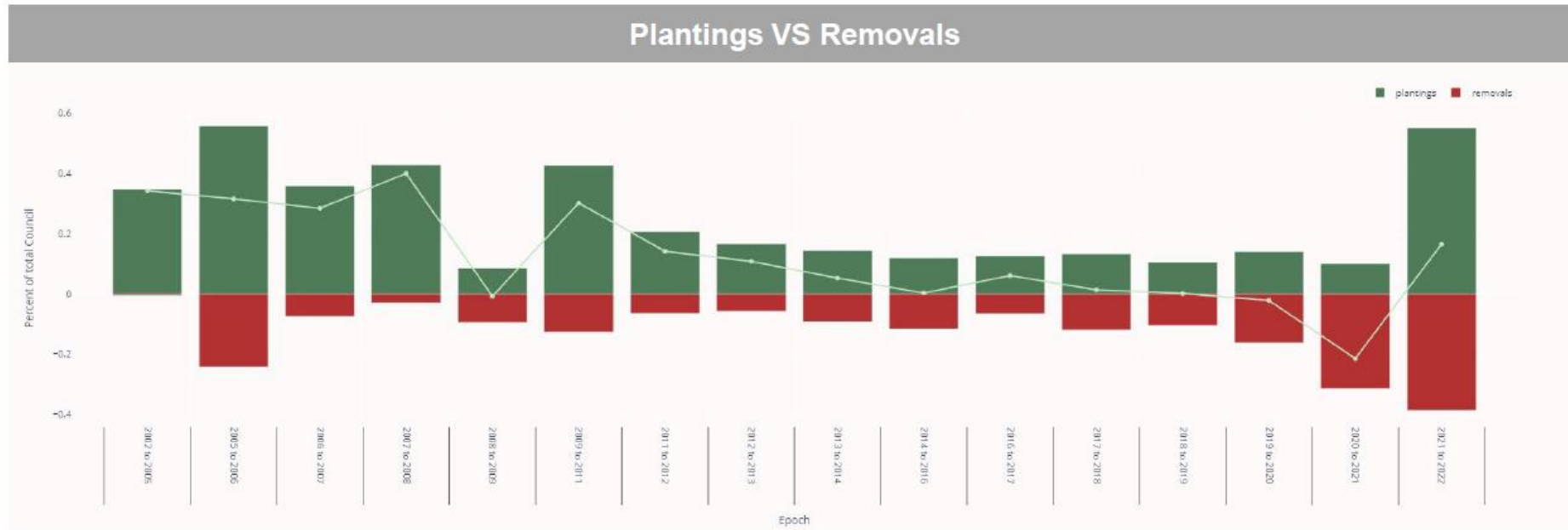


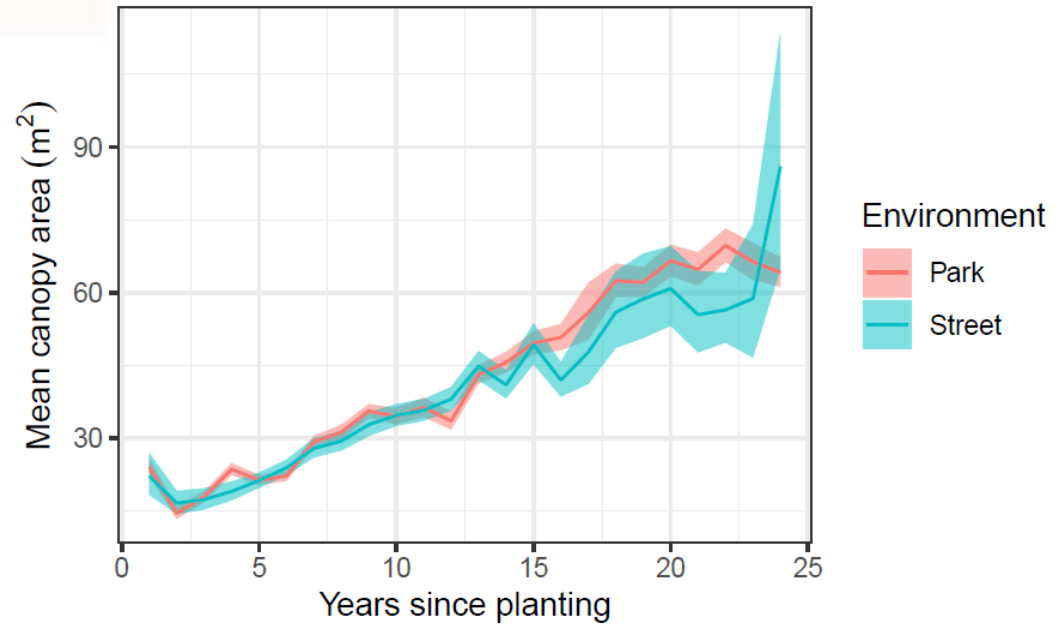
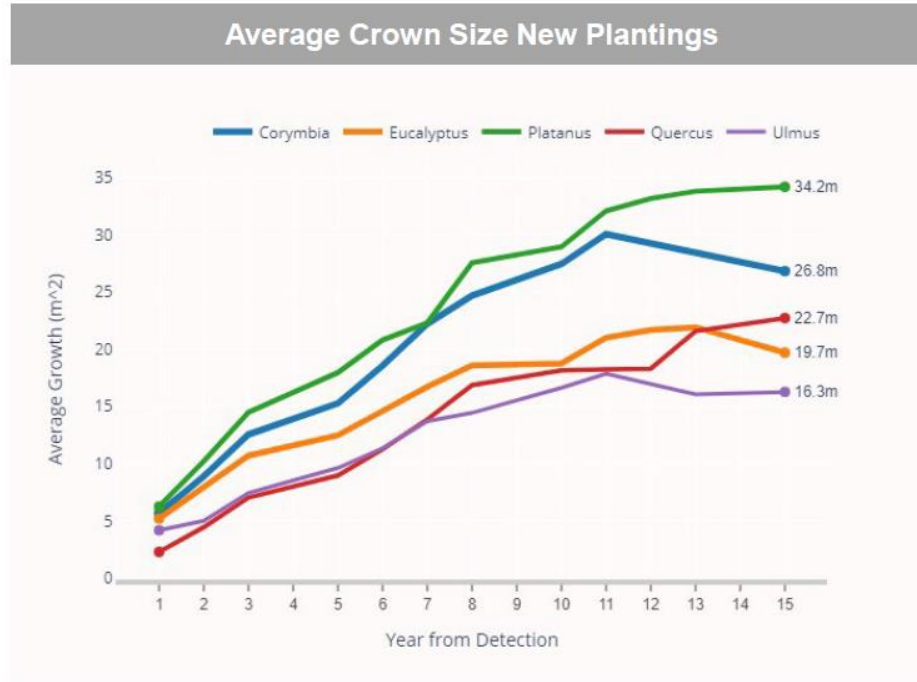
Tree Policy update in 2021:

- Pruning rules clarified for sightlines and advertising signage
- Pruning fees introduced
- Updated tree valuation method, includes higher values for:
 - Habitat corridors
 - Indigenous and native trees
 - Trees in priority planting areas
 - Social cost of carbon

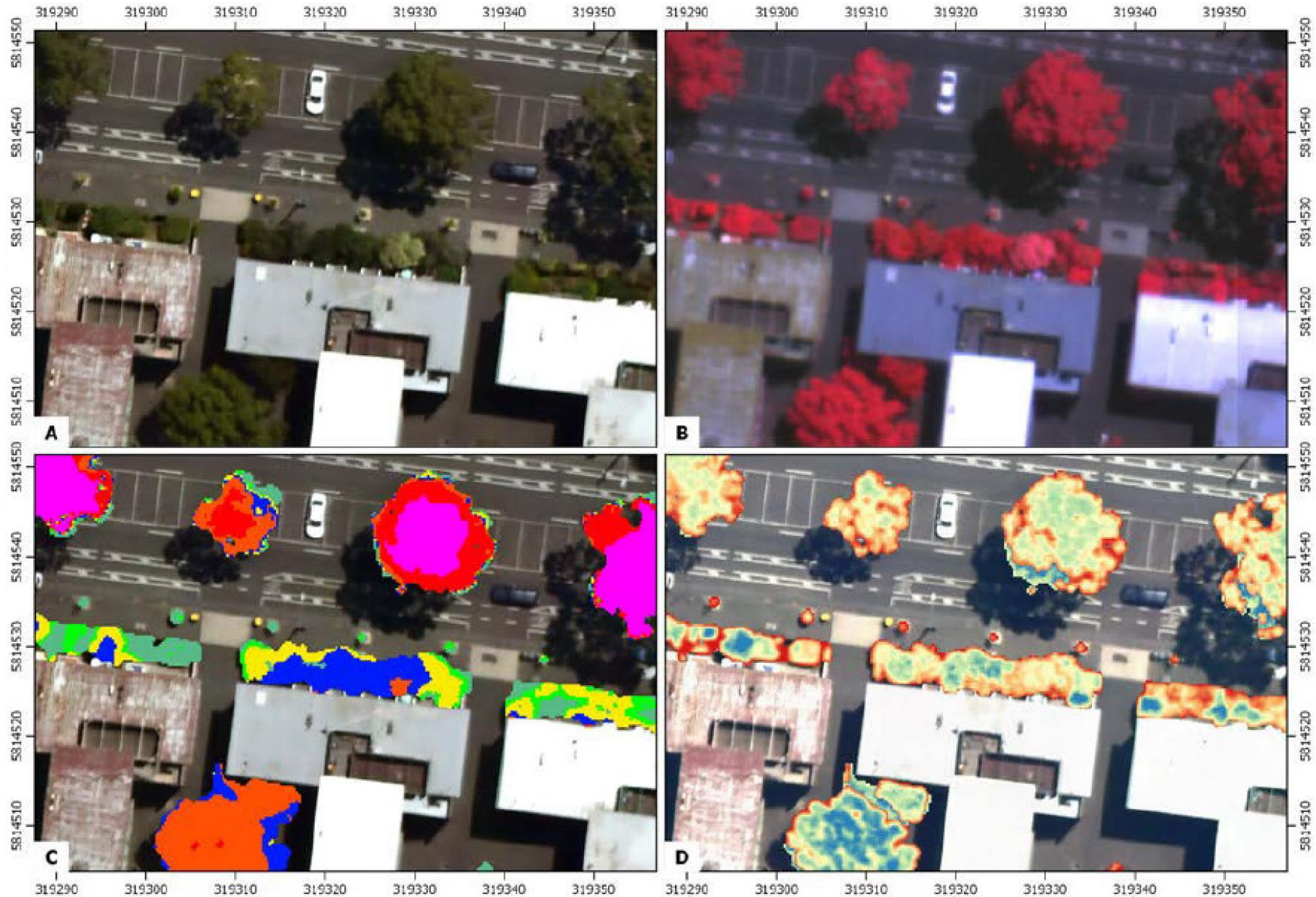


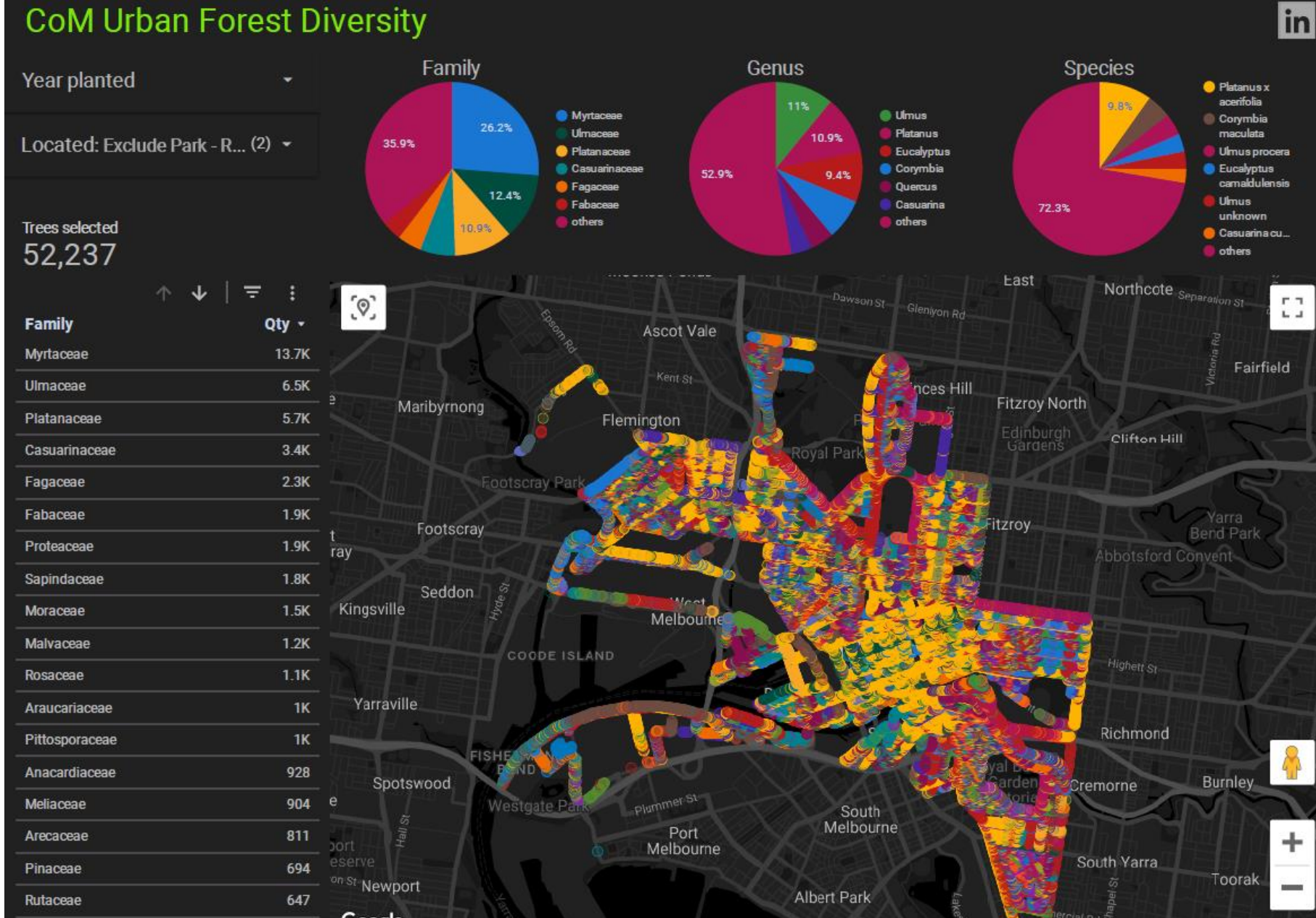




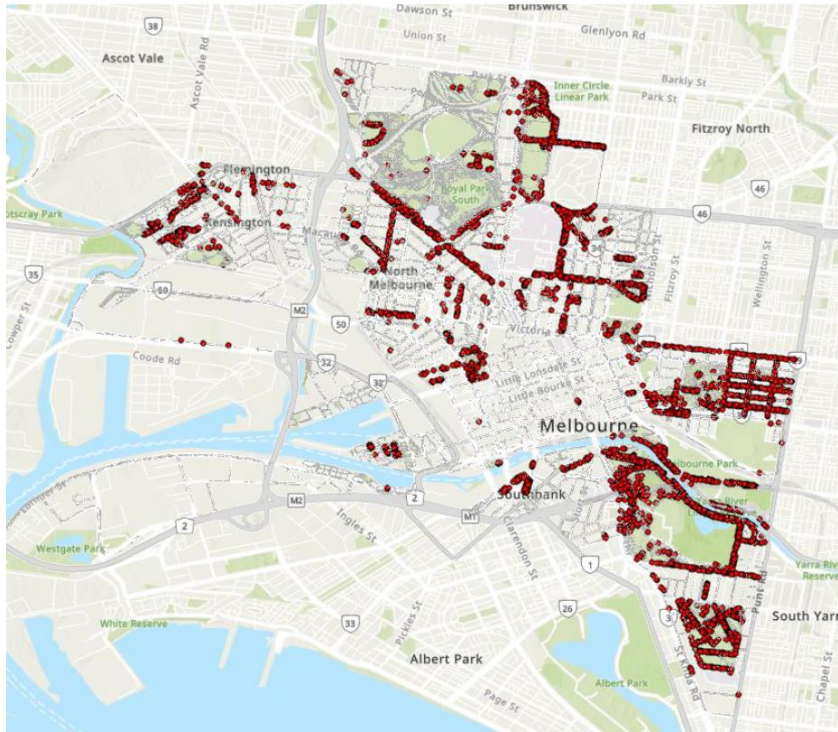


Canopy cover

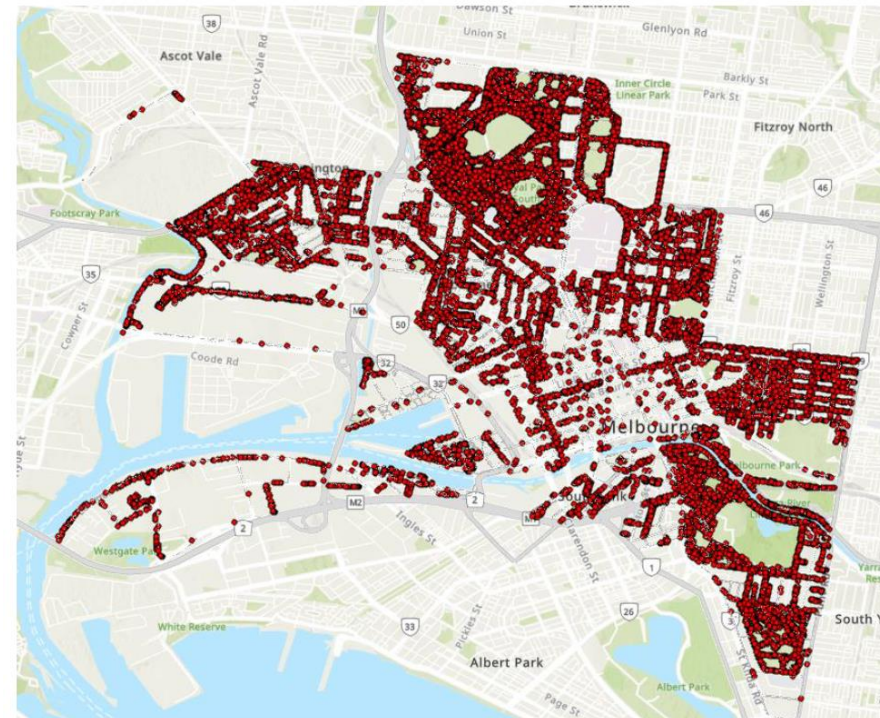




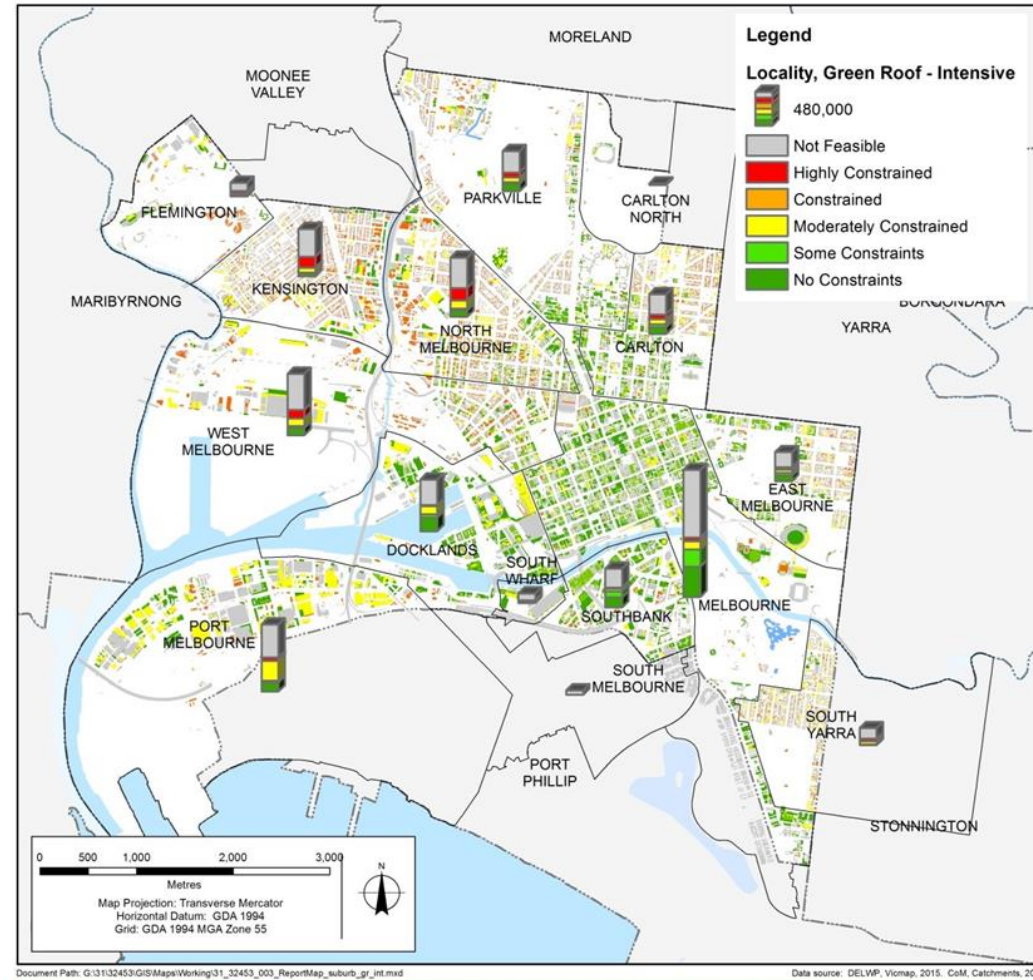
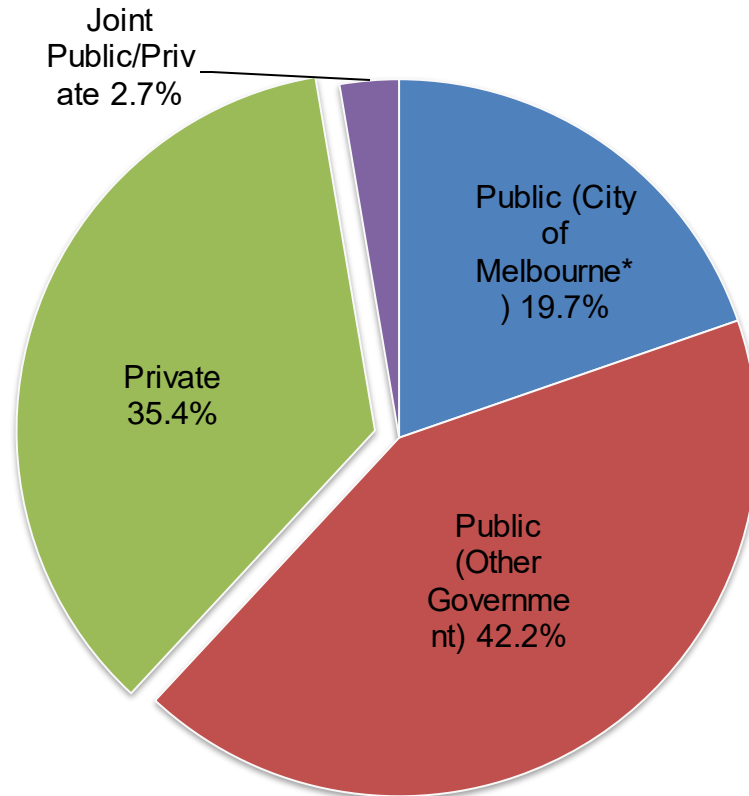
Monitor and mitigate biosecurity risks



Dutch Elm Disease

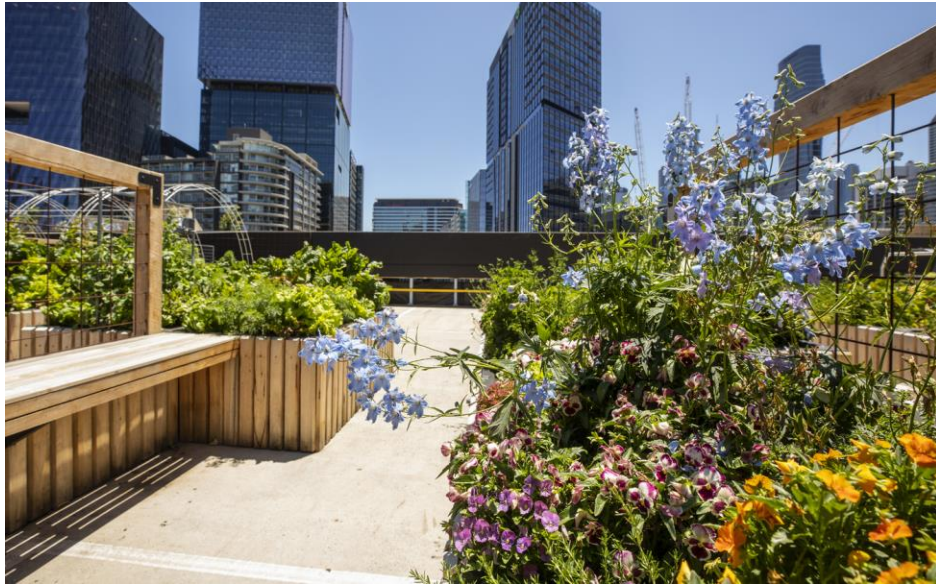


Spongy Moth

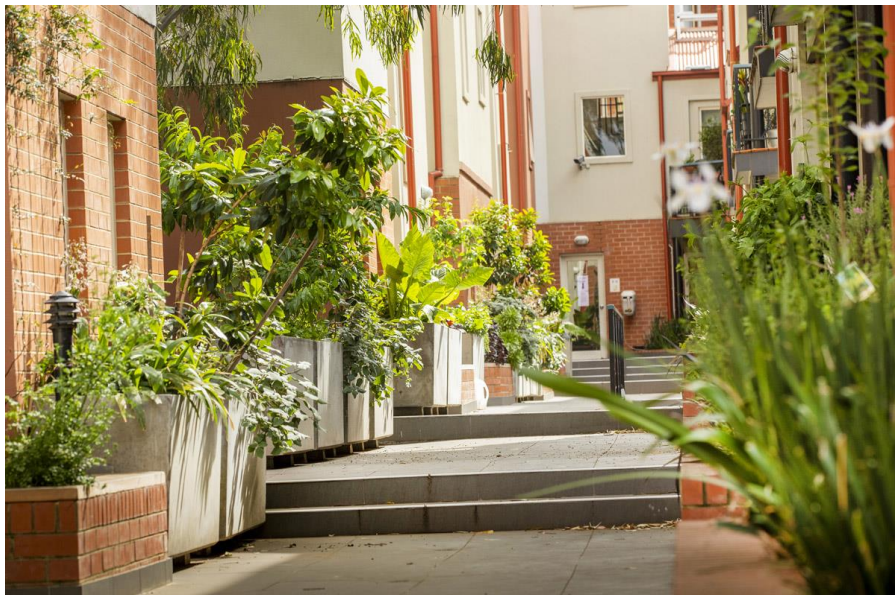


880 ha of rooftops

150 ha of useable vertical space for greening



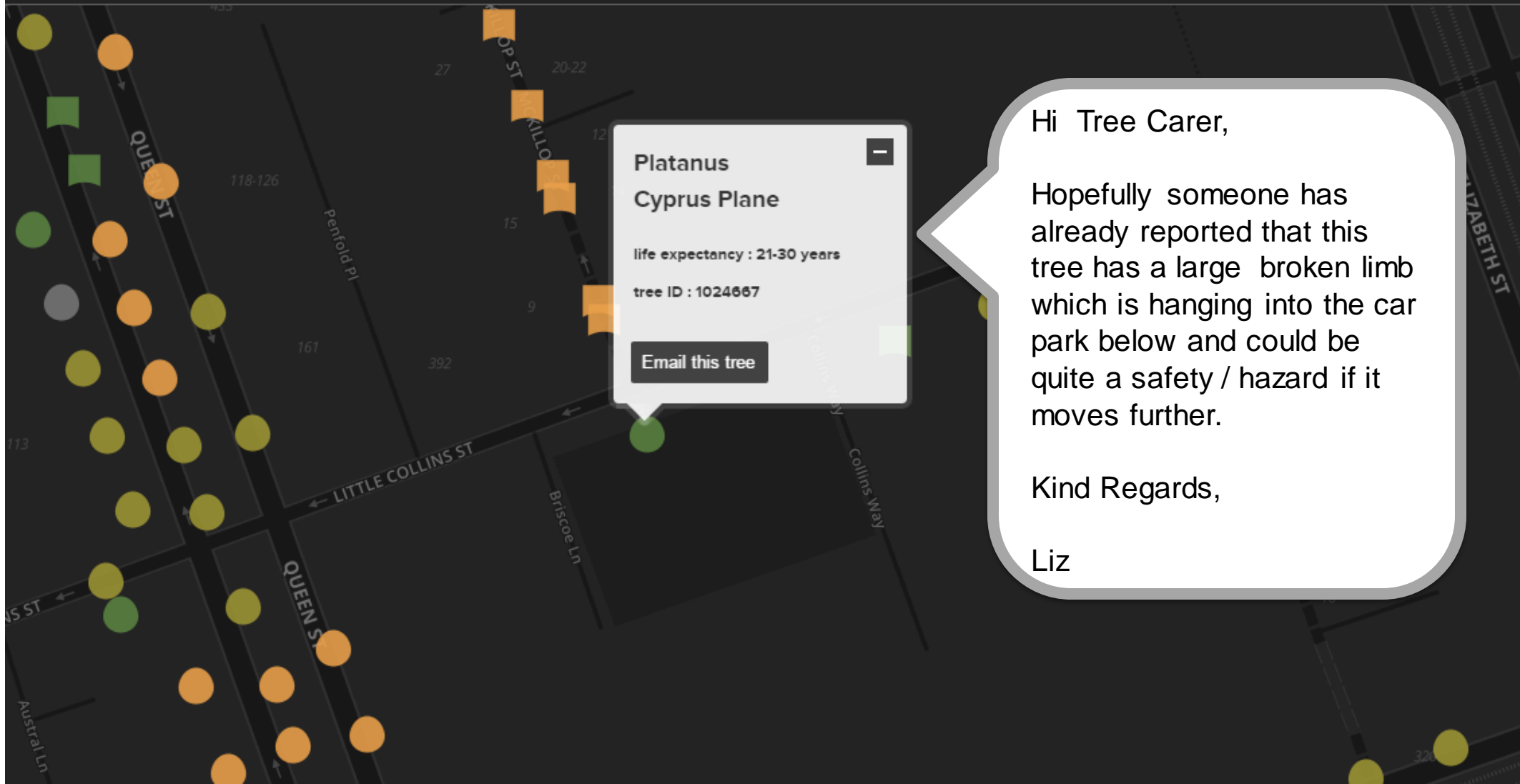
Other projects

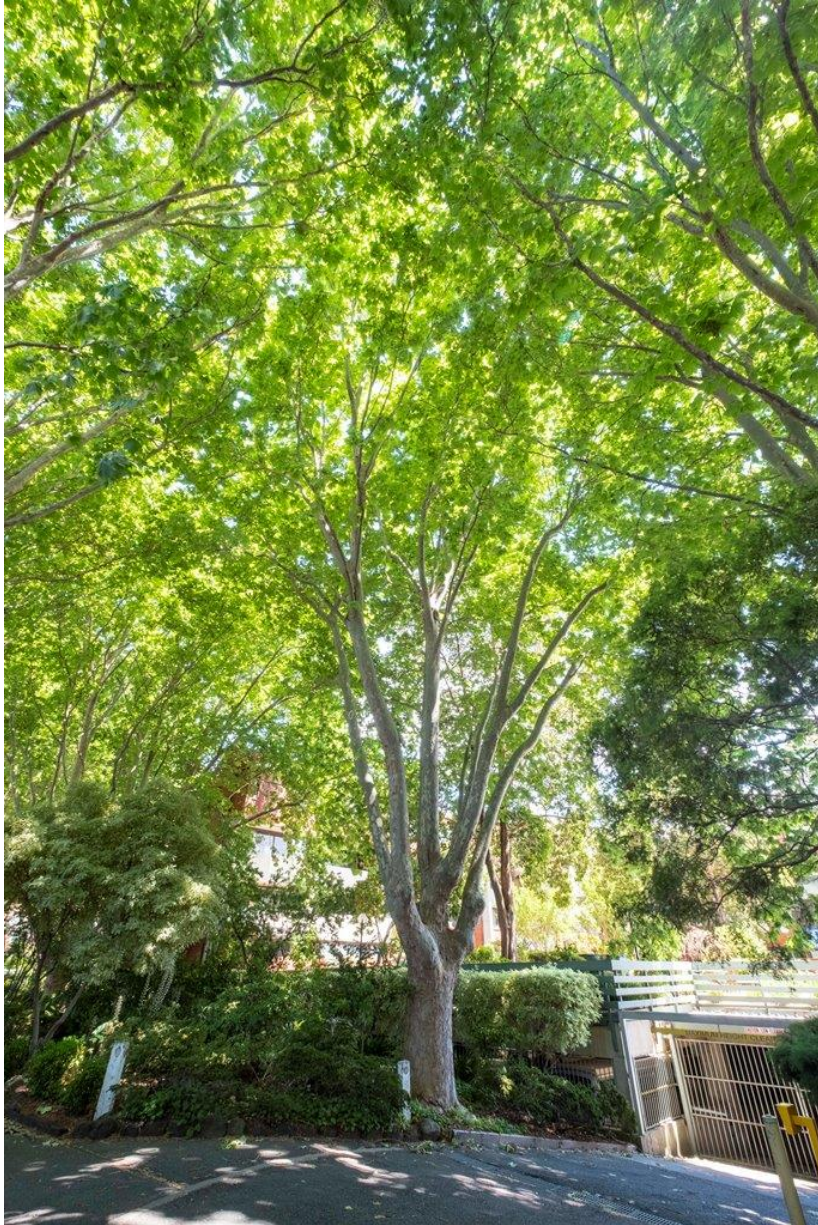




- 200+ trees protected by Environmental Significance Overlay
- Trees nominated by the public and must be on private property
- Permits required to undertake any works on or around exceptional trees

Individual tree data for City of Melbourne trees is presented below. **Pan** and **Zoom** into different areas of Melbourne, **click** on tree symbols to reveal details, and **select** between different locations and filters.

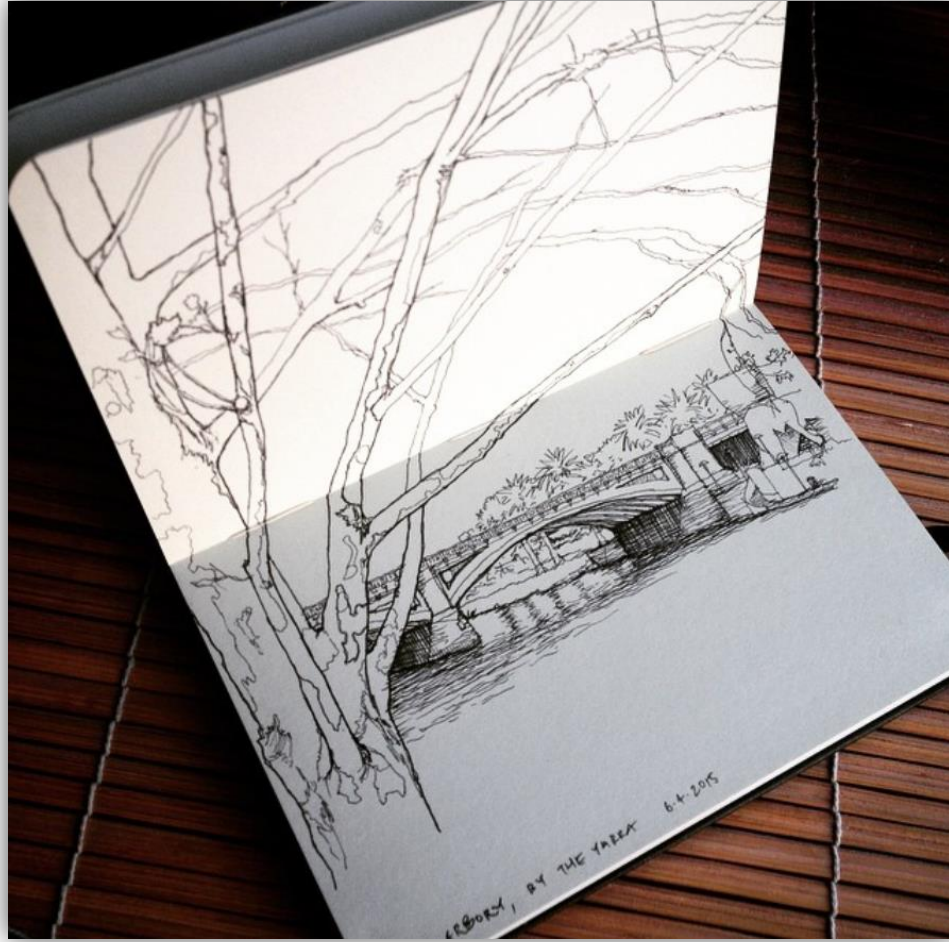




*Dear London,
I am saddened to see that your
life expectancy is only around
five years.*

*I am also saddened to see that
you have been labelled as a
'Plane Tree' - I do not think you
are plane at all, in fact I think the
way you wear your bark is quite
alluring.*

Meg



Hey Tree 1066821, what stunning view you have across the Yarra from your home at The Arbory Eatery.

The view was so good, I had to sketch it.

Enjoy your portrait.

Happy Easter.



CITY OF MELBOURNE

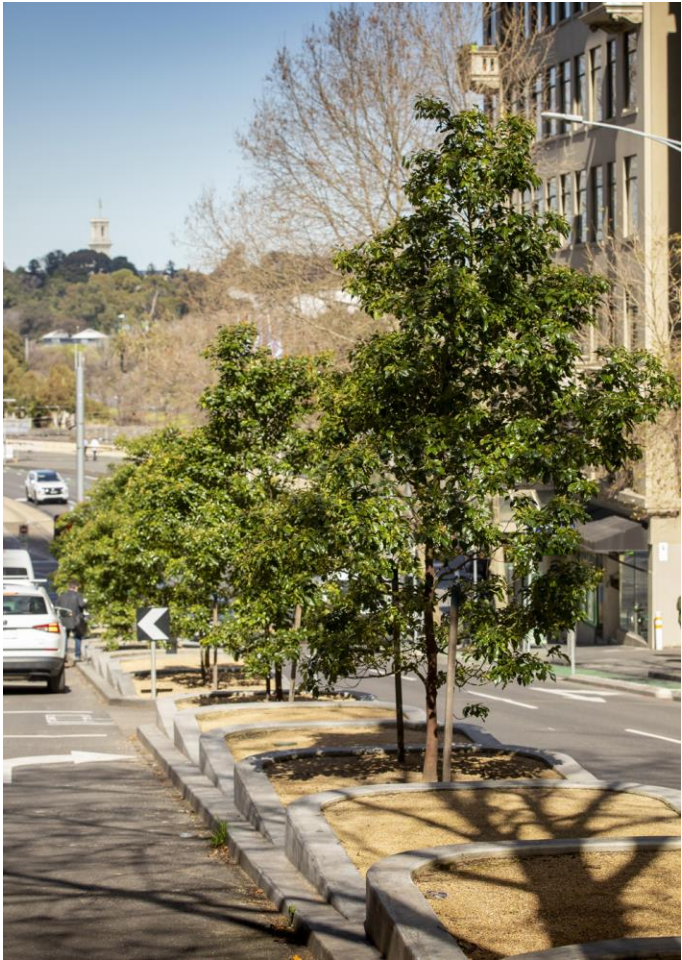
MELBOURNE.VIC.GOV.AU

LT BOURKE ST
331
SWANSTON ST
225



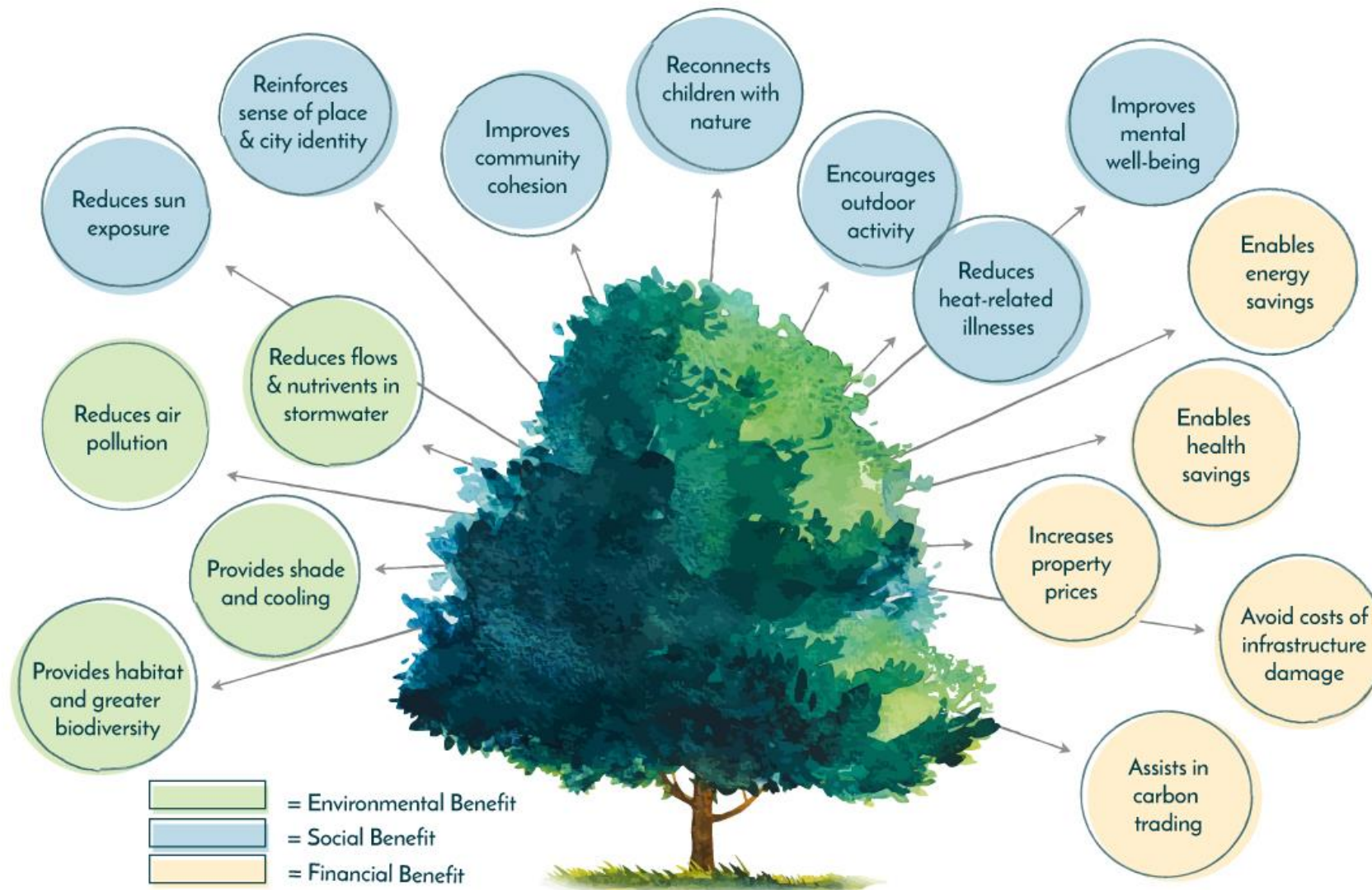
Swanston St
225 - 179

© City of Melbourne



Tree health monitoring





Kensington 24.1% canopy

4195 trees planted since 2012
58% in parks, 32% on streets
64% other 36% major genera
21 streetscapes completed

NW Melbourne 18.1% canopy

8797 trees planted since 2012
46% in parks, 54% on streets
69% other 31% major genera
74 streetscapes completed

Docklands 9.3% canopy

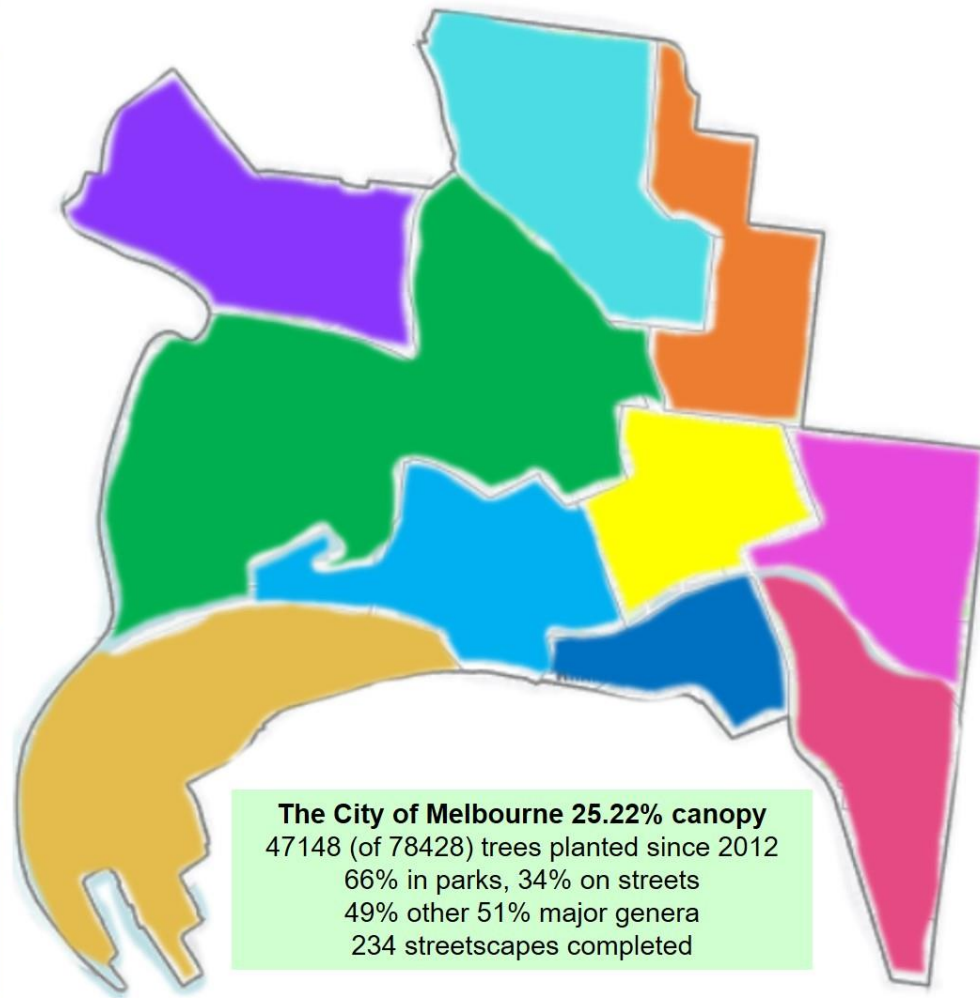
5240 trees planted since 2012
62% in parks, 38% in streets
60% other 40% major genera
7 streetscapes completed

Southbank 16.8% canopy

1397 trees planted since 2012
36% in parks, 74% on streets
56% other 44% major genera
9 streetscapes completed

Fishermans 9.8% canopy

1646 trees planted since 2012
7% in parks, 93% on streets
45% other 55% major genera
8 streetscapes completed



Parkville 29.2% canopy

15692 trees planted since 2012
92% in parks, 8% on streets
36% other 64% major genera
13 streetscapes completed

Carlton 25.5% canopy

3500 trees planted since 2012
40% in parks, 60% on streets
54% other 46% major genera
35 streetscapes completed

Central City 18.8% canopy

1304 trees planted since 2012
2% in parks, 92% on streets
32% other 68% major genera
32 streetscapes completed

East Melbourne 31% canopy

3522 trees planted since 2012
70% in parks, 30% on streets
57% other 43% major genera
15 streetscapes completed

South Yarra 34.1% canopy

1855 trees planted since 2012
50% in parks, 50% on streets
41% other 55% major genera
15 streetscapes completed

The City of Melbourne 25.22% canopy

47148 (of 78428) trees planted since 2012
66% in parks, 34% on streets
49% other 51% major genera
234 streetscapes completed

2nd **World** **Forum on** **Urban** **Forests**

2023



**World Forum on
Urban Forests**