



## Session 2.4

Elysium: Creating the policy and legal framework to support the role of urban forests as public health infrastructure

Chair: Matt Spitsen



**World Forum on  
Urban Forests**



# 2nd World Forum on Urban Forests

Washington DC, 2023

## City of Pittsburgh Tree Equity Initiatives



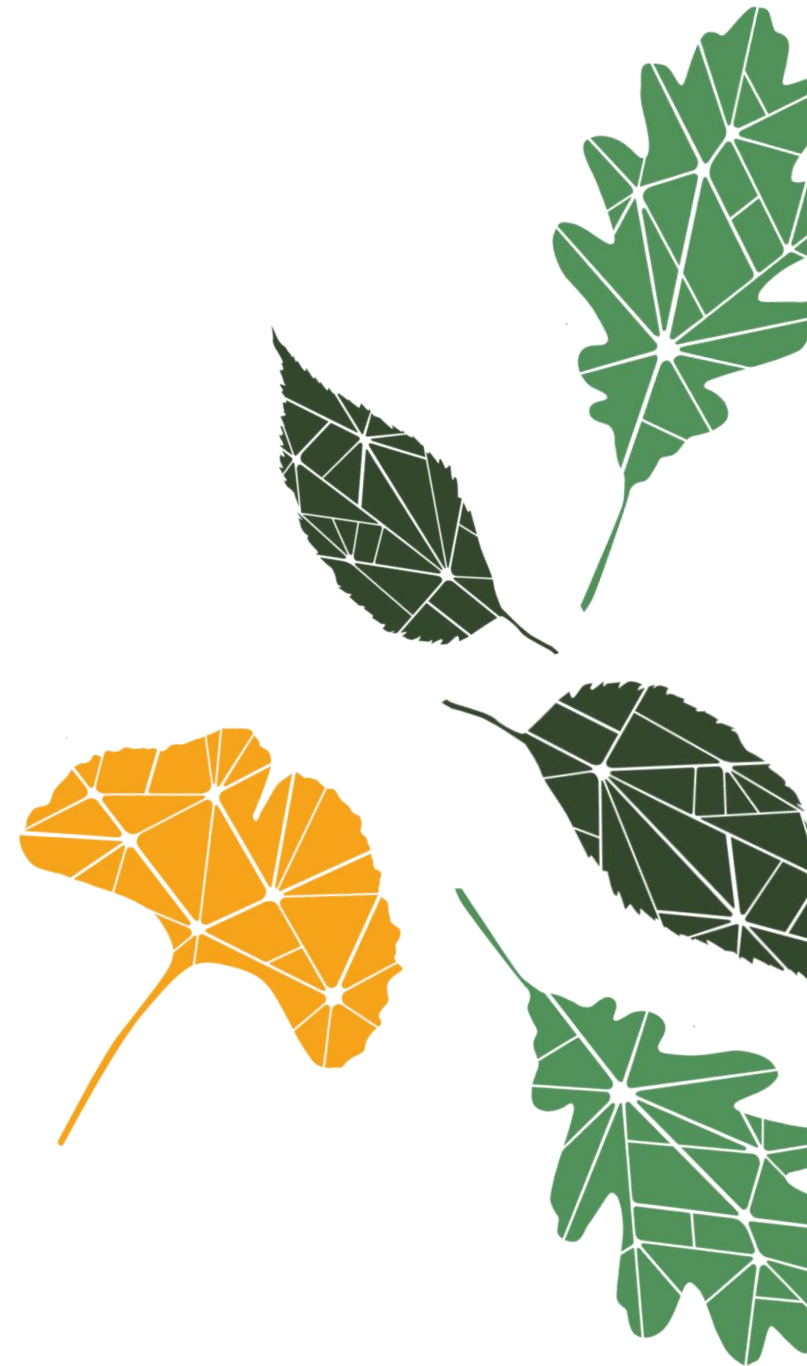
---

Presented by

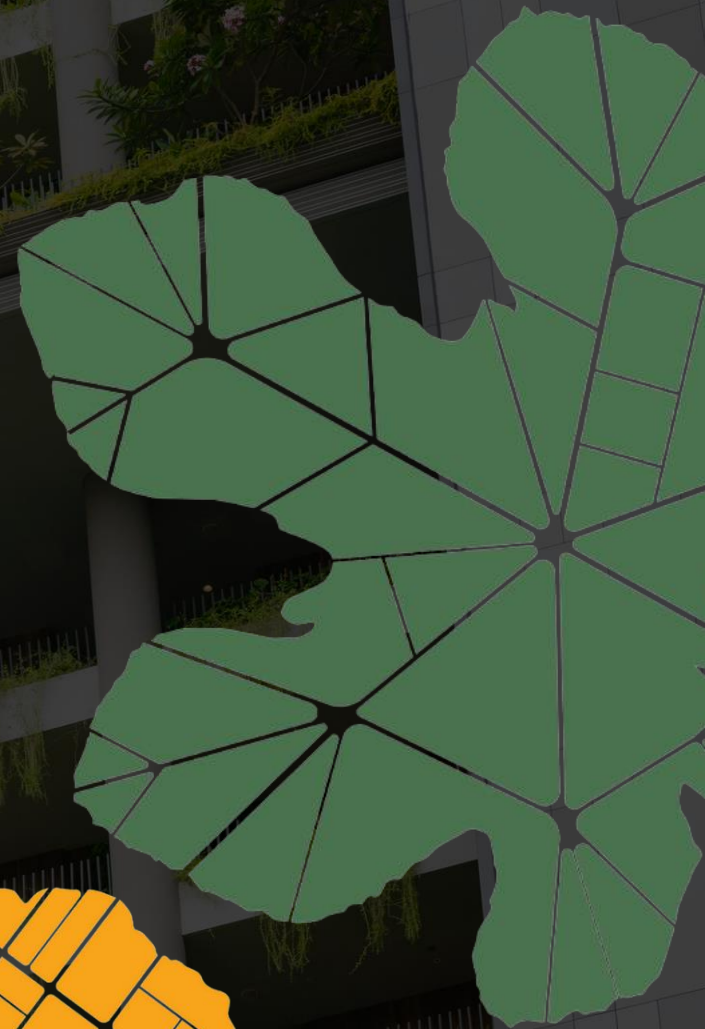
Michael P Kelley, MNR

Pittsburgh, Pennsylvania

America's Most Livable City



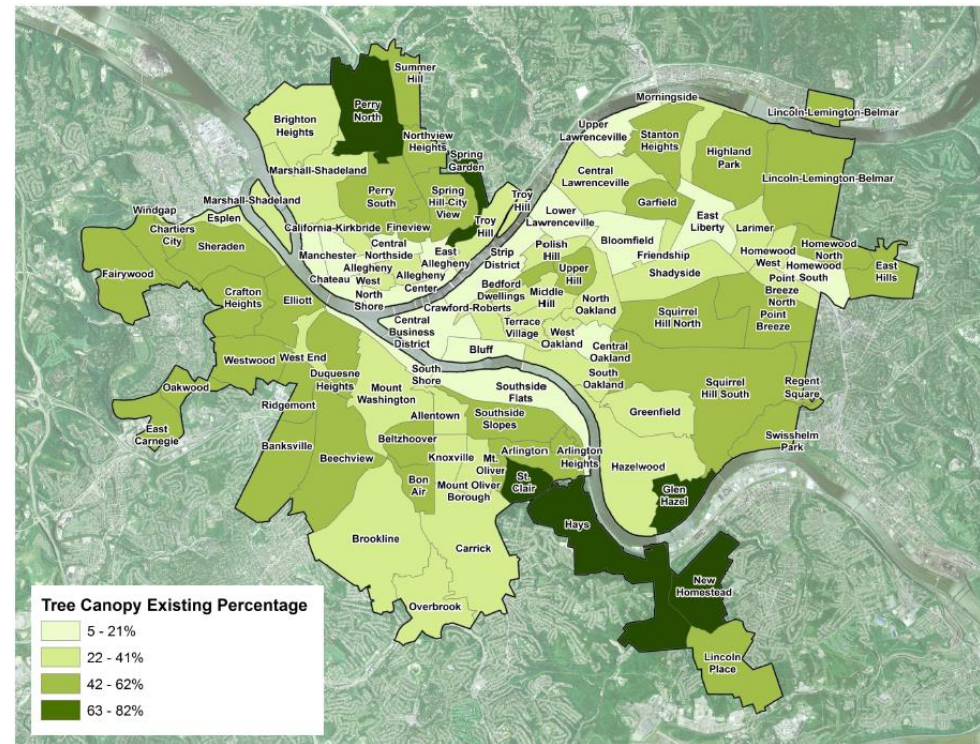
Planting for the future  
Coverage for All





# Contributing Factors to Canopy Inequity

- Redlining
- Disinvestment in Poor and Minority Communities
- Economic Collapses
- Lack of Intentional Reinvestment





## Program History

- 2012: ReLeaf Program Launches in Manchester
- 2019: City Convenes Tree Equity Subcommittee
- 2020: Tree Equity Subcommittee Develops Equity Matrix; Releases Street Tree Equity Plan
- 2021: First Round of Tree Plantings in Equity Neighborhoods
- 2022: DCNR Grant Focusing on Replanting in Equity Neighborhoods Awarded
- 2022: Trust Trees campaign launches; ReLeaf Beltzhoover
- 2023: City and Partners Awarded \$9M in IRA grant funds for Justice40 Neighborhoods across Allegheny County

Partner Organization

City of Pittsburgh Forestry Division





## Show Up and Own Up

- Refocus energy on clearing backlog of work in Equity Communities
- Work with partner organizations and community groups to identify areas of greatest need
- Community Forestry Specialist
- 3TB Community Forest Initiative
- Supporting planting initiatives of partner organizations



Partner Organization  
Tree Pittsburgh







# 2nd World Forum on Urban Forests

Washington DC, 2023

## ReLeaf Plans

**RELEAF**  
WITH TREE PITTSBURGH

**Greener neighborhoods one block at a time!**  
Tree Pittsburgh's ReLeaf program is a stakeholder-driven process that brings urban forest planning to the neighborhood level. We work with communities that want to chart a path toward a greener neighborhood. Together, we'll create a plan to grow the urban forest through tree planting, young tree care, and education to help ensure long-term success.

**THIS IS YOUR FOUR-STEP ROAD MAP TO RELEAF PLANNING!**

**01 What Do We Have?**  
Our team will assess existing trees, green spaces, and existing resources within the community.

**02 How Do We Get There?**  
With your community priorities in mind, we'll put it all together to create project ideas to bring more trees to your neighborhood.

**03 What Do We Want?**  
Next, we listen to community members to define their wants and needs for protecting and growing their neighborhood trees.

**04 How Are We Doing?**  
Tree Pittsburgh staff will check in to track, record, and analyze metrics to deliver a progress report on your ReLeaf efforts.

**TREE PITTSBURGH**  
32 62nd Street | Pittsburgh, PA 15201 | 412.781.TREE (8733) | treepittsburgh.org

@treeppgh @treepittsburgh @treeppgh



Partner Organization

Western Pennsylvania  
Conservancy





## TreeVitalize

- WPC has planted 40,000 trees since 2008
- TreeVitalize Pittsburgh partnership, which includes many organizations and municipal stakeholders across the City and County
- Proper site preparation, tree selection, community engagement, and maintenance.



Partner Organization  
Landforce





## Investing in People Restoring the Land

- Employment social enterprise nonprofit
- Trains and hires people typically excluded from family sustaining green jobs Works on environmental stewardship projects including tree planting, care, GSI, and habitat restoration
- Supports trainees/hirees to transition to long-term employment
- Launching Urban Wood Reuse program to provide services for full lifecycle of trees



Partner Organization

Resilient Cities Catalyst





## Help cities and communities create catalytic change

- Making the case for sustained data-informed community-centered investments in GI & urban tree canopy
- Utilizing data to tell a story of the opportunity of trees
- Visualizing innovative ways of thinking about what a tree-equitable neighborhood and city look like
- Supporting planting initiatives in neighborhoods facing high levels of climate risk



Partner Organization

UrbanKind Institute







**2nd World Forum on  
Urban Forests**

Washington DC, 2023

---

# Trust Trees





# Thank you

Michael Kelley, MNR | City of  
Pittsburgh

 [Michael.Kelley@pittsburghpa.gov](mailto:Michael.Kelley@pittsburghpa.gov)



Food and Agriculture  
Organization of the  
United Nations



Arbor Day  
Foundation



International Society of Arboriculture



Smithsonian



U.S. Forest Service  
Department of Agriculture

# **2nd** **World** **Forum on** **Urban** **Forests**

**2023**



**World Forum on  
Urban Forests**



# 2nd World Forum on Urban Forests

Washington DC, 2023

## Centering Community in Community Forests

Partnering with environmental justice communities to ensure equitable distribution of urban canopy in the United States



---

Presented by

Colleen Berg, Molly Coddling, Kalaia Tripeaux  
Preston Brooks, Ericka Popovich



# Environmental Injustice Acknowledgement

Canopy inequity in the United States is the result of decades of systemic racism in housing and lending, and land use disenfranchisement for people of Color and low-income communities.



## The opportunity: IRA shifts EJ

In 2022, the United States Congress passed landmark legislation which will provide \$1.5 B in funding for urban forest management in environmentally disadvantaged communities.

States will have historic levels of funding dedicated to meeting the needs of EJ communities.



# The challenge: States must engage community for long-term change

1. Understand community readiness and motivation to accept trees
2. Make sure planting projects are not drop it and forget it
3. Help communities maintain and care for trees through education
4. Address financial burdens of tree care
5. Provide meaningful employment for community members
6. Work across divides to address intersectional EJ priorities



# How to build bridges through community engagement

1. Start with awareness
2. Slow your roll
3. Get flexible
4. Be Responsive
5. Support Sustainability





# Feedback: What's working

- Building relationships before IRA awards
- Removing barriers to resources



# Feedback: What's Not

- Lack of awareness of eligibility
- Bureaucracy
- Limitations of our programming
- Timelines to action
- Too much talking, not enough action





# Diverse Partnerships: Together we can advance justice

MN:

Working with urban farm and garden groups to co-create mini forests.

Supporting EJ organizers on residential relief efforts.



PA:

Partnership Planting with  
TreePhilly



Photo credit: North News,  
2022



# Diverse Partnerships: Together we can advance justice

LA: Food justice Citrus Program

OH: Education and action in community



# Sustainability: How to support equity programming and staff

## Organizational assessment questions:

- Are divisions, agencies ready for change?
- How much support will existing staff need to support TES? Are you hiring additional staff?
- Will TES concentrate on focused efforts or be pulled in too many directions?
- How will TES guidance be handled?
- How will you involve and consult community with your programming?





# Thank you

Please find us afterwards to connect

Colleen Berg: [Colleen.Berg@dnr.ohio.gov](mailto:Colleen.Berg@dnr.ohio.gov)

Preston Brooks: [preston@batonrougegreen.com](mailto:preston@batonrougegreen.com)

Ericka Popovich: [epopovich@bluewaterbaltimore.org](mailto:epopovich@bluewaterbaltimore.org)

Kalaia Tripeaux: [c-ktripeau@pa.gov](mailto:c-ktripeau@pa.gov)

Molly Coddling: [molly.coddling@state.mn.us](mailto:molly.coddling@state.mn.us)



Food and Agriculture  
Organization of the  
United Nations



Arbor Day  
Foundation



International Society of Arboriculture



Smithsonian



U.S. Forest Service

# **2nd** **World** **Forum on** **Urban** **Forests**

**2023**



**World Forum on  
Urban Forests**



# Biocultural Restoration for Canopy, Ecology and Community Equity

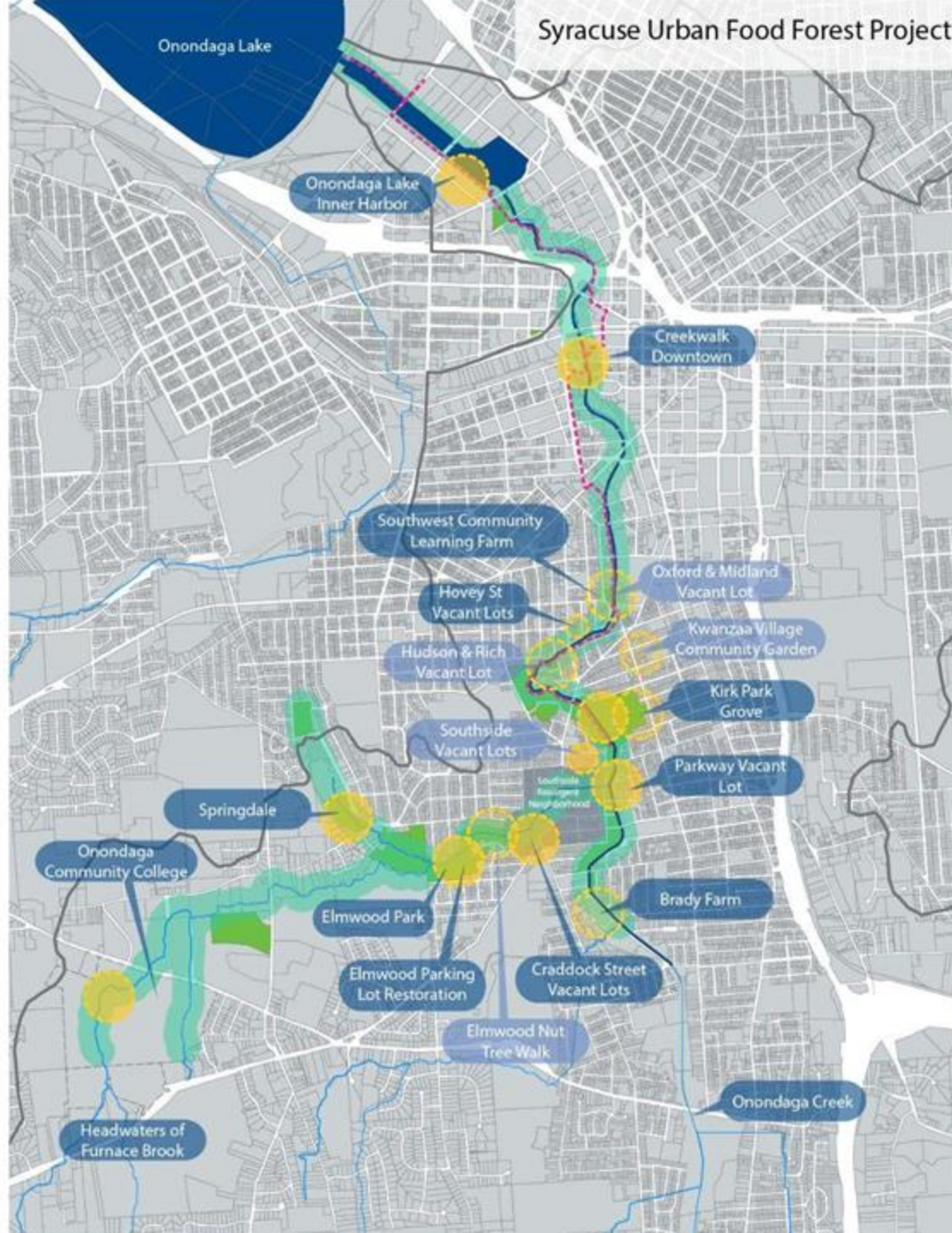
USDA Forest Service Great Lakes Restoration Initiative

Kat Korba, Kanopy Works LLC  
Anne C Bellows, Professor Food Studies, Syracuse University  
World Forum on Urban Forests  
Washington D.C., 16-20 October 2023



# Syracuse Urban Food Forest Project (SUFFP)

## Area Map



# Overview

- US Forest Service, GLRI (2021-2024)
- Plant 920 trees and 500 shrubs on 4.0 acres along 9.0 mile corridor in Syracuse, NY
- Community engagement and education with community planting events and community food walks
- Increase intercept by 3.5 M gallons; lower stormwater impact by 0.8M gallons over 20 years

# Ecological zones

CORRIDOR



IMPERVIOUS COVER



CANOPY



BUILT ENVIRONMENT



# Syracuse Urban Food Forest Project

- Research collaboration between faculty, students, community organizations in Syracuse
- Combination of naturally growing and intentionally planted food forest
- Promotes community stewardship, restores wild food literacy, and encourages human-environment interaction

Community Researcher: Antonisha Owens

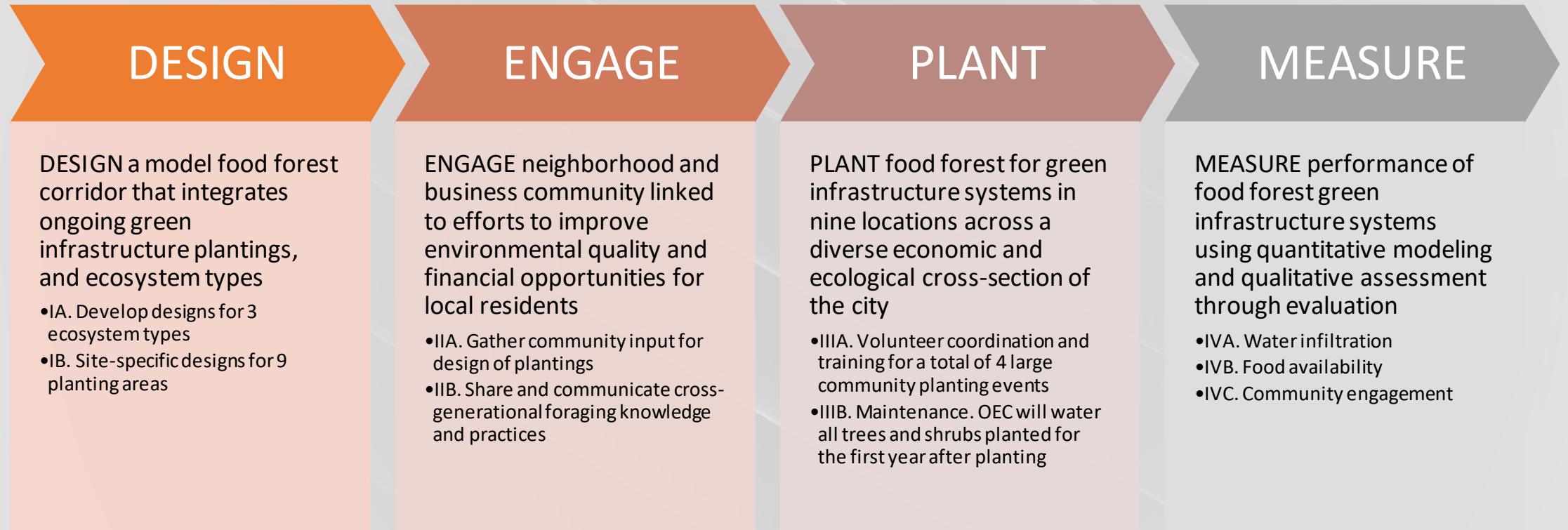
Research Assistants: Jess Cherofsky, Elena Juodisius, Marie Claire Bryant, Lisa Bush, Angelia Rossi, Ethan Tyo, Briana Okebalama, Grace Taylor, Theresa Ferrigno, Anna Gugerty, Gabrielle Reagan



# Partners

- Syracuse City Depts Parks & Rec (Urban Forestry), Neighborhood & Business Dev (NBD)
- SUNY College of Environmental Science and Forestry (ESF)
- Syracuse University (SU)
- Onondaga Earth Corps (OEC)
- SW Learning Farm
- Onondaga Community College

# Scope of Work

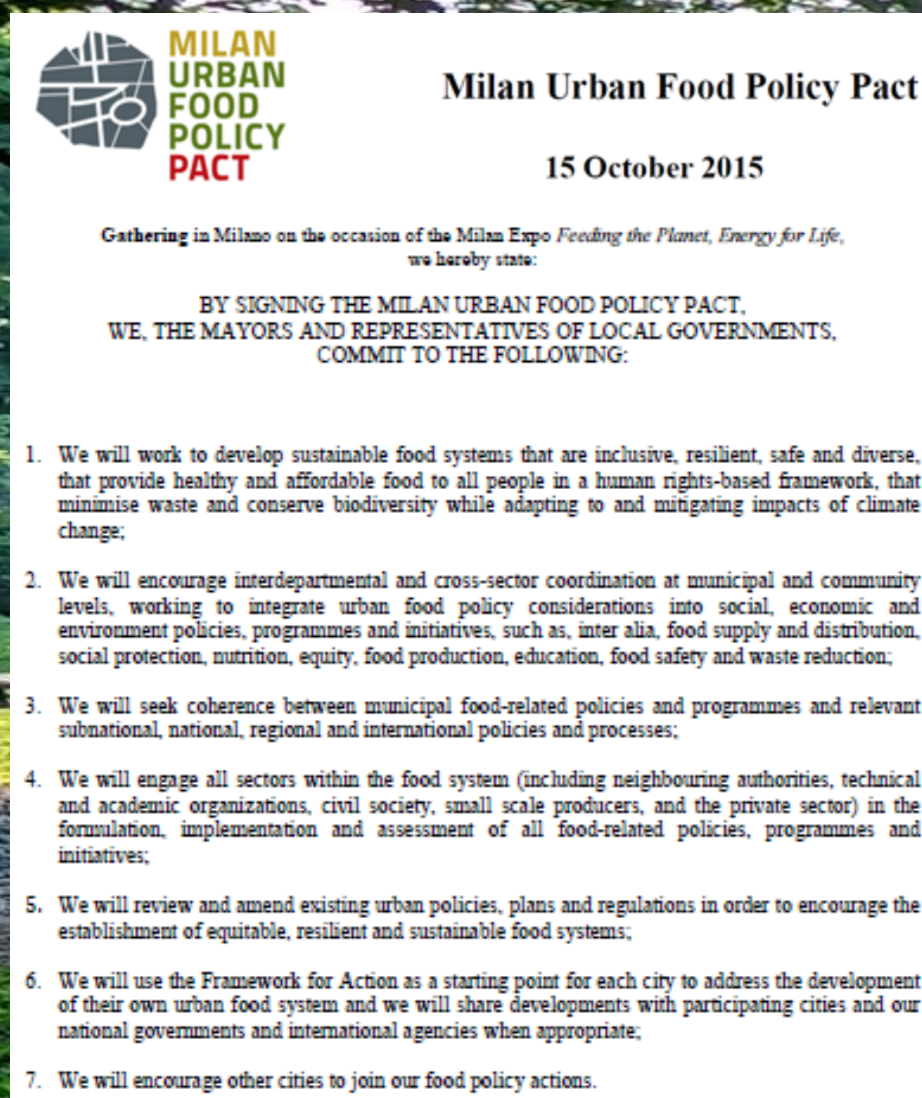
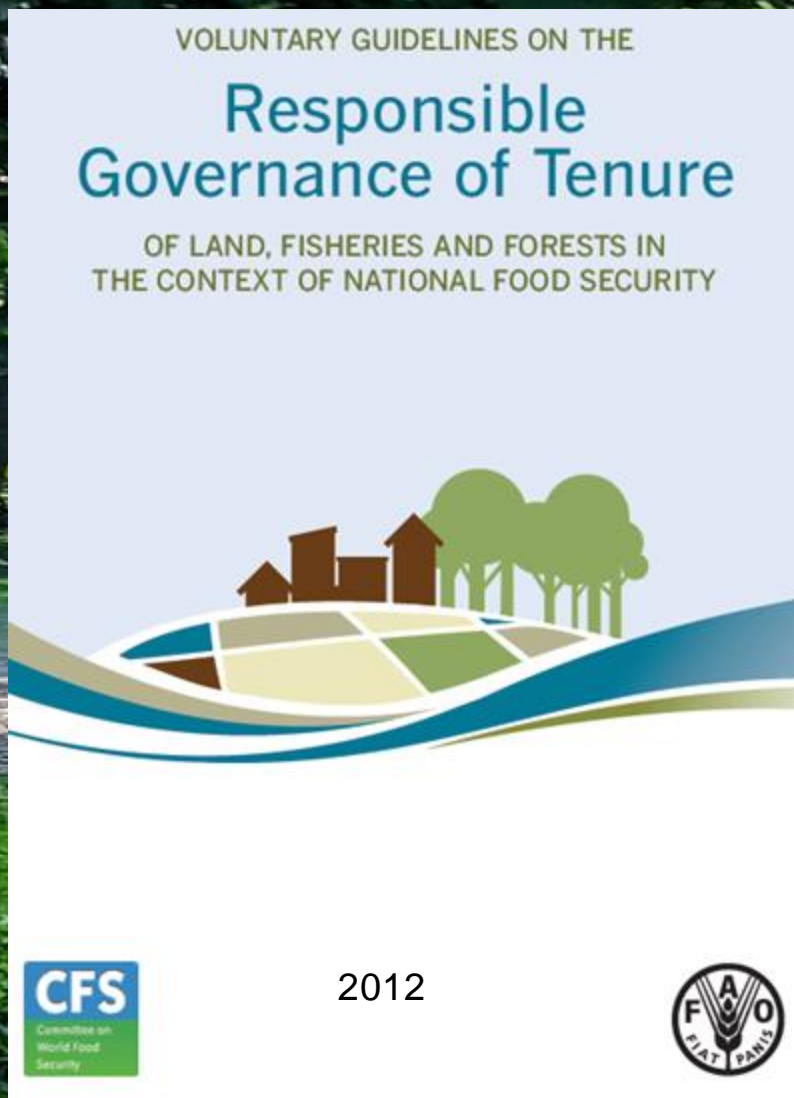


# Foraging, Public Access and the Honorable Harvest

The SUFFP increases access to public land for foraging



# Foundational Underpinnings....



.... For public access to urban forests for foraging



# Responsible Governance of Tenure faces....

## *Local contradictions in Syracuse municipal code....*

Sec. 17-8. Interference with trees, shrubs, grass and soil.

No person shall:

- (a) Climb, peel, cut, deface, remove, injure or destroy any tree in any park or playground;
- (b) Pluck, break, trample upon or interfere with any flower or shrub in any park or playground;
- (c) Stand, walk, ride or lie upon any part of a park or playground laid out and appropriated for grass or shrubbery when there shall have been placed thereon a sign forbidding the same;
- (d) Take, dig, remove or carry away any sward, gravel, sand, turf or earth in any park or playground;
- (e) Injure, deface, disturb or befoul any part of a city park or any buildings, signs, equipment, ornament, statue, fence, bridge, structure or other property within any part or park approach or within any other area under the control of the commissioner of parks, recreation and youth programs.

(Ord. of 6-10-68; L.L. No. 10-1994)



*.. Interfering with public access to urban forests for foraging*

# Responsible Governance of Tenure: Amending Syracuse's foraging code


- \* Review of diverse US domestic codes
- \* Interviews with US active foragers and municipal officers
- \* Survey of Syracuse residents
- \* Proposal to 'Cuse City Council

## Draft Municipal Code Proposal for Syracuse City Council

**Plant foraging** (the practice of identifying, collecting, and consuming wild edibles, also referred to as “gathering” or “harvesting”) is permitted on public land in the City of Syracuse. **“Wild edibles”** are defined as both naturally occurring, i.e., without any human support, and as introduced and sometimes managed, as in the case of planted juneberry trees or fiddlehead fern. **Permission to forage is contingent** on its practice as respectful and responsible. Respectful and responsible foraging considers plants’ sustainable reproduction needs, other human and non-human foraging interests, and never allows the taking of more than half of the existing edibles in any given space, as articulated in **Traditional Ecological Knowledge systems such as “the Honorable Harvest.”** Foragers assume responsibility for their practice. The **City of Syracuse may not be held liable** for misidentification of plants, allergic reactions to plant consumption, or consequences of foraging practices (e.g. from poison ivy or deer tick presence).

# Re-thinking Dietary Diversity (good nutrition) in an **Expanded Food System** that Includes Foraging Wild Edibles

We reviewed antioxidant phytochemicals that fight chronic disease

- Vitamin A
  - Vitamin C
  - Vitamin E
  - Selenium
  - Riboflavin
- 
- Cancer
  - Coronary Heart Disease
  - Diabetes
  - High blood pressure
  - Kidney disease
  - Obesity

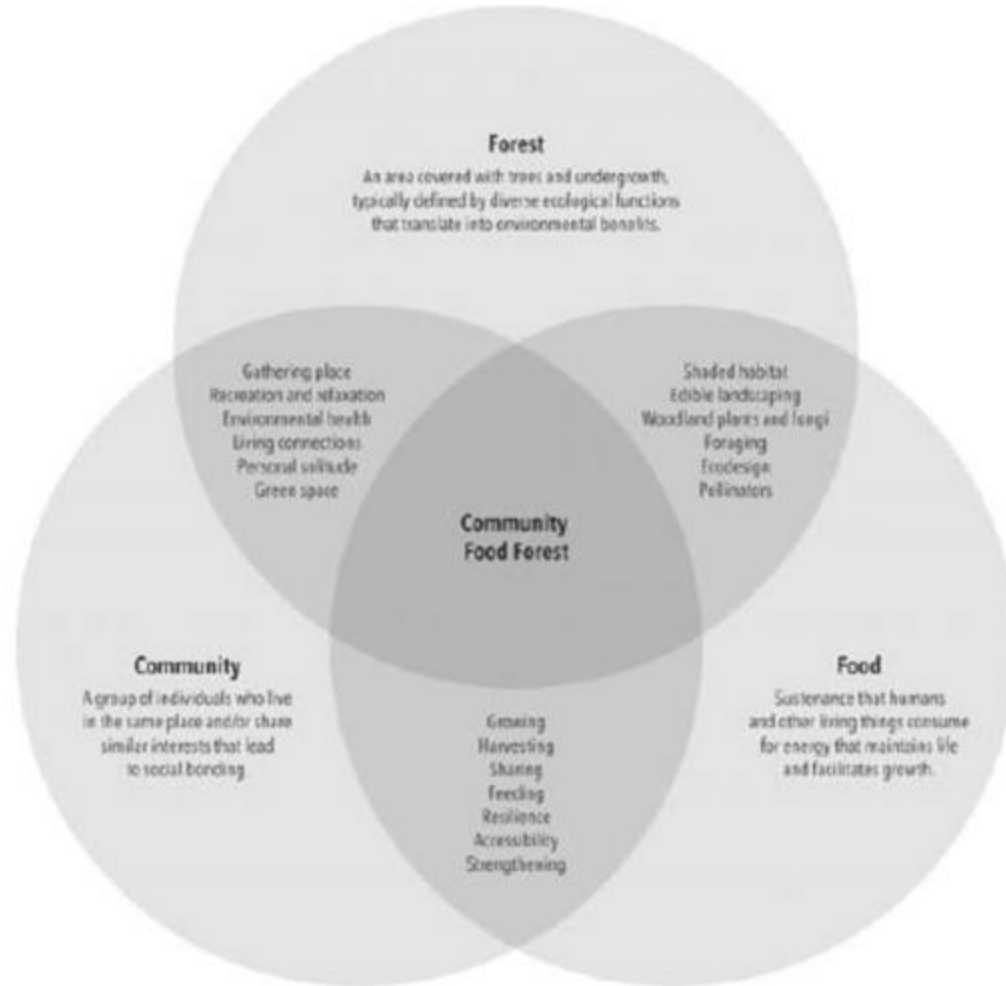


# Public Health

## Nutrition Findings

1. **Valuable forageable foods** can be found in your own neighborhood. They are rich in antioxidant phytochemicals and **are at least as nutritionally valuable as commercial varieties.**
1. There is **missing data on nutritional content of most wild forageable foods** (largely free, “whole”, often in public commons) but lots of data on processed foods.

# Social Components of Community Food Forests



**The manner in which a food forest is integrated into the fabric of a community is as at least important as the trees that are planted and the food that is produced**

**Bukowski & Munsell, The Community Food Forest Handbook**

From Bukowski and Munsell. The Community Food Forest Handbook



# Community food walks

**FORAGE YOUR LUNCH**  
**@ Elmwood and Kirk Park\***  
WEDNESDAY, JULY 22ND  
12:00-12:45 PM

Join us to learn and share:  
What plants you can eat and find in Syracuse parks  
and public places  
How to prepare and cook foraged plants



\*Access this virtual tour by emailing [syurbanfoodbrest@gmail.com](mailto:syurbanfoodbrest@gmail.com) for the zoom link



# Public Health, Community Engagement, and Environmental Justice





ENGAGE

Planting w/  
Youth from  
OASIS  
SCHOOL



Chinkapin  
Oak, *Quercus*  
*muehlenbergii*



Chinkapin  
Oak, *Quercus*  
*muehlenbergii*



# OAK DOMINATED FORESTS

## COMMON SPECIES

- White Oak *Quercus Alba*
- Chestnut Oak *Quercus Montana*
- Northern Red Oak *Quercus Rubra*
- Black Oak *Quercus Velutina*
- Sugar Maple *Acer Saccharum*
- American Beech *Fagus Grandifolia*

— Destructive Forces — Ecological Forces — Edible Attributes — Physical Forces — Use Attributes



# Bird community in food forest



mulberry



serviceberry

- Quantification of bird community associated with food forest species
- Evaluation of mulberry and serviceberry
- 12 individuals of each tree
- During fruiting (June and July 2020) and during fall



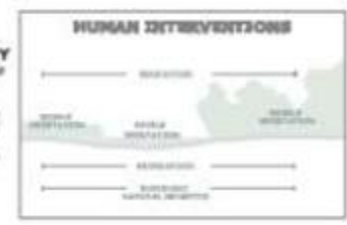
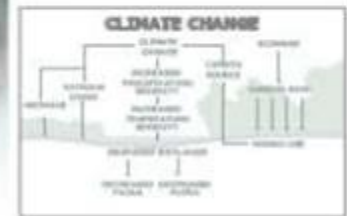
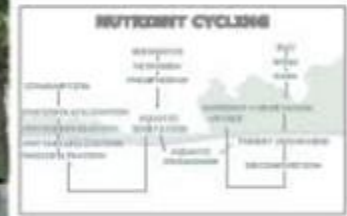
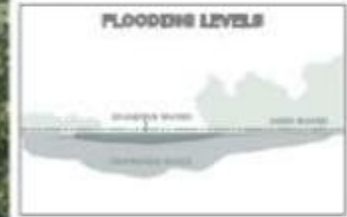
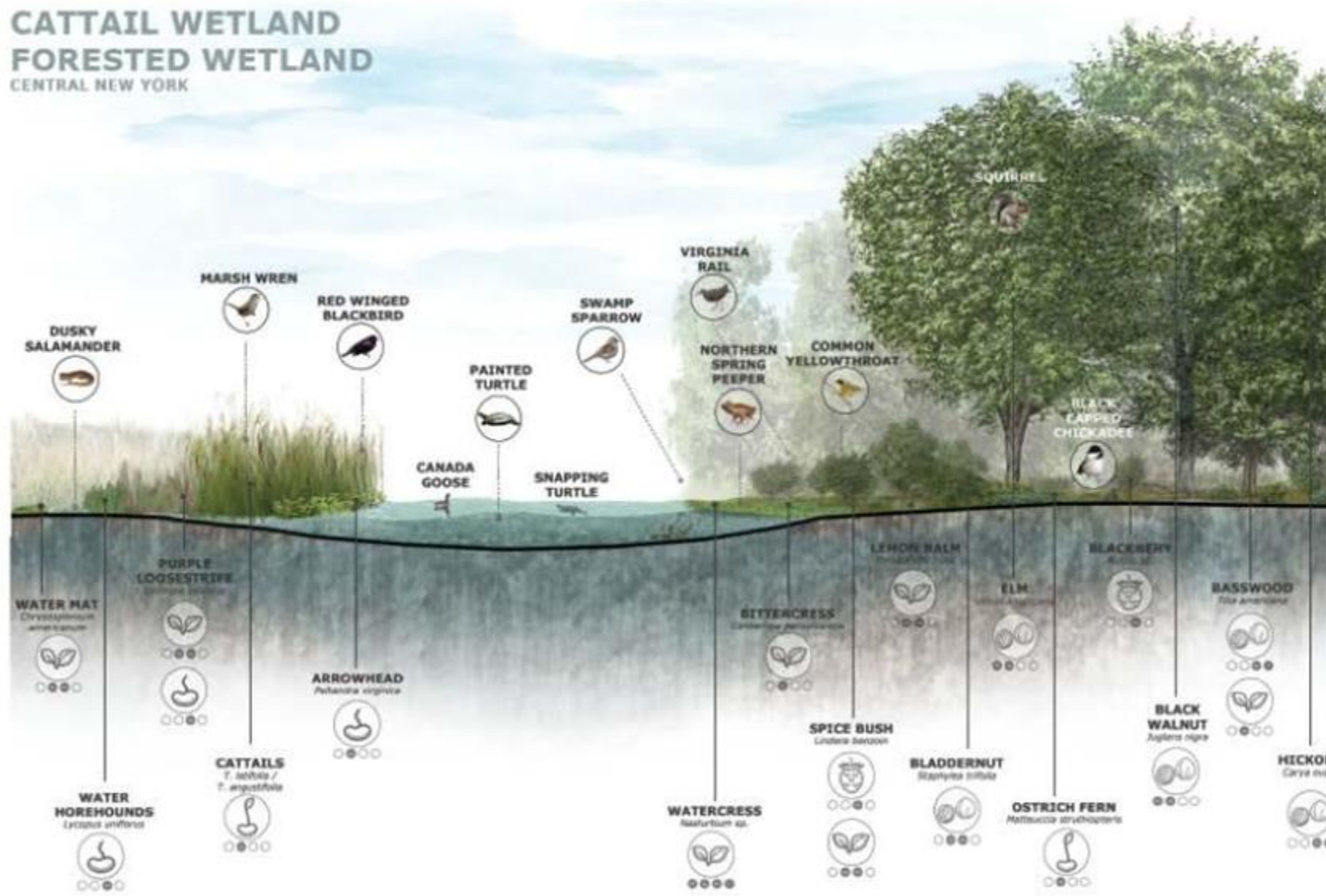
# Bird community



- Over 20 bird species found associated with mulberry and serviceberry
- Paired sampling revealed that serviceberry and mulberry support more species than without fruiting serviceberry and mulberry
- Serviceberry appears to have a greater influence on bird community than mulberry

# Ecological zones

CATTAIL WETLAND  
FORESTED WETLAND  
CENTRAL NEW YORK



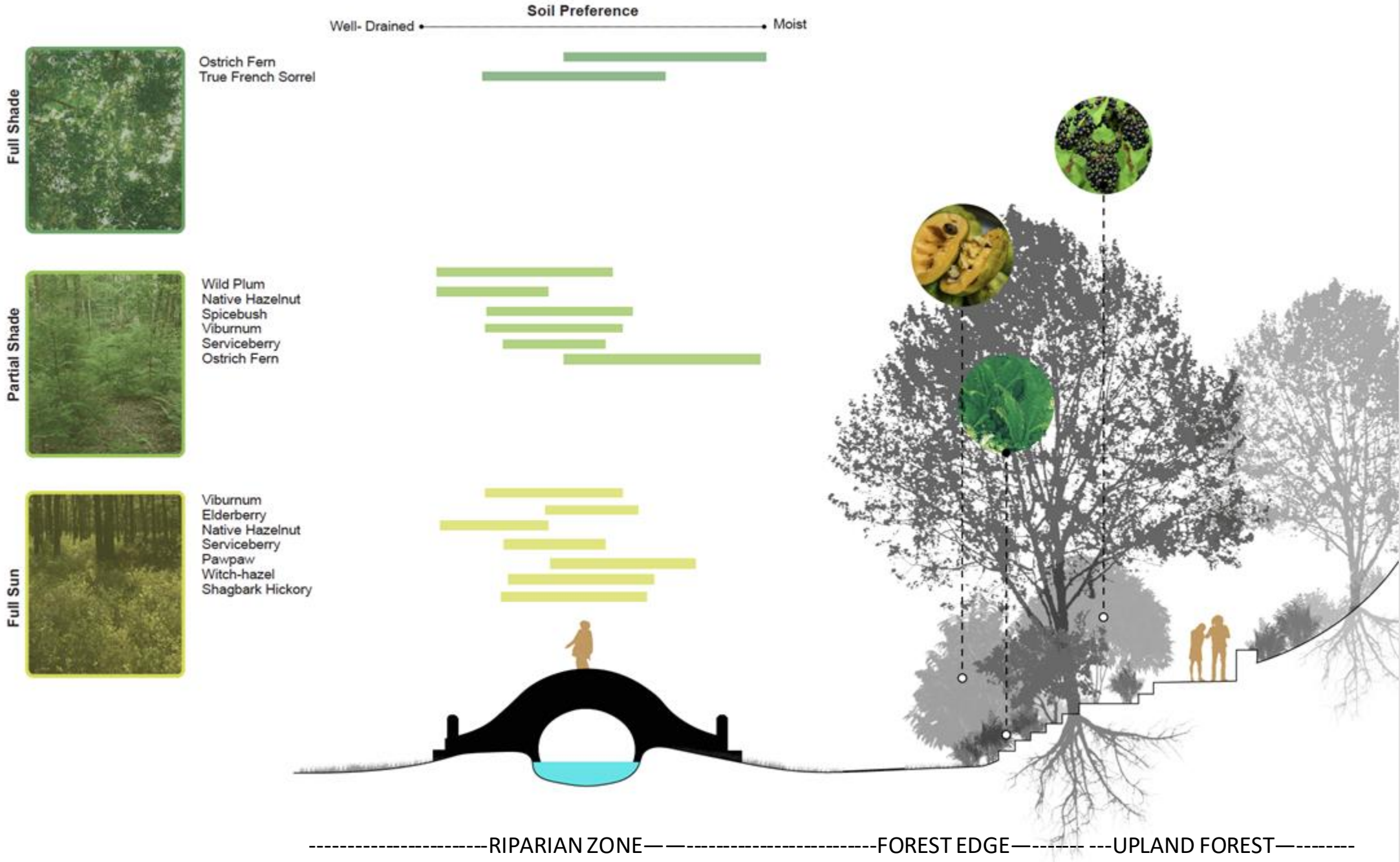
# Green Infrastructure

In addition to creating edible ecologies, the SUFFP provides important ecological services





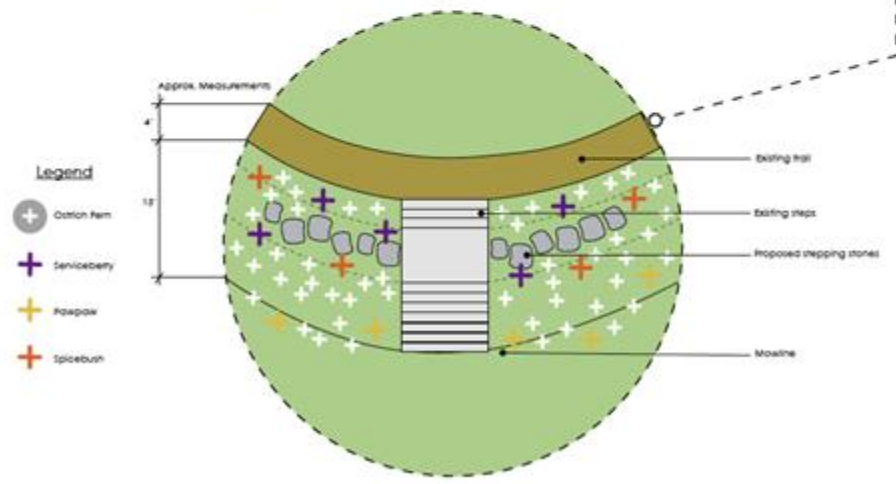
**NOVEL ECOSYSTEM STRUCTURE + FUNCTION:  
 PARKWAY: ELMWOOD PARK PROPOSED PLANT SPECIES**



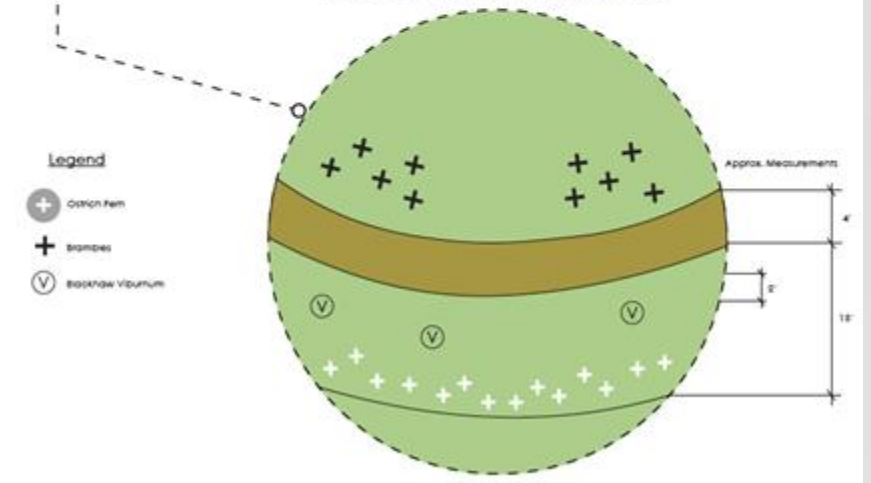




Proposed Planting Schematic: Stairs by Bridge



Proposed Planting Schematic: Brambles



Riparian

Pawpaw,  
*Asimina triloba*







# Upland Forest

Shagbark Hickory,  
*Carya ovata*



*Forest  
Crop  
Trifecta*

*Sugar Maple*



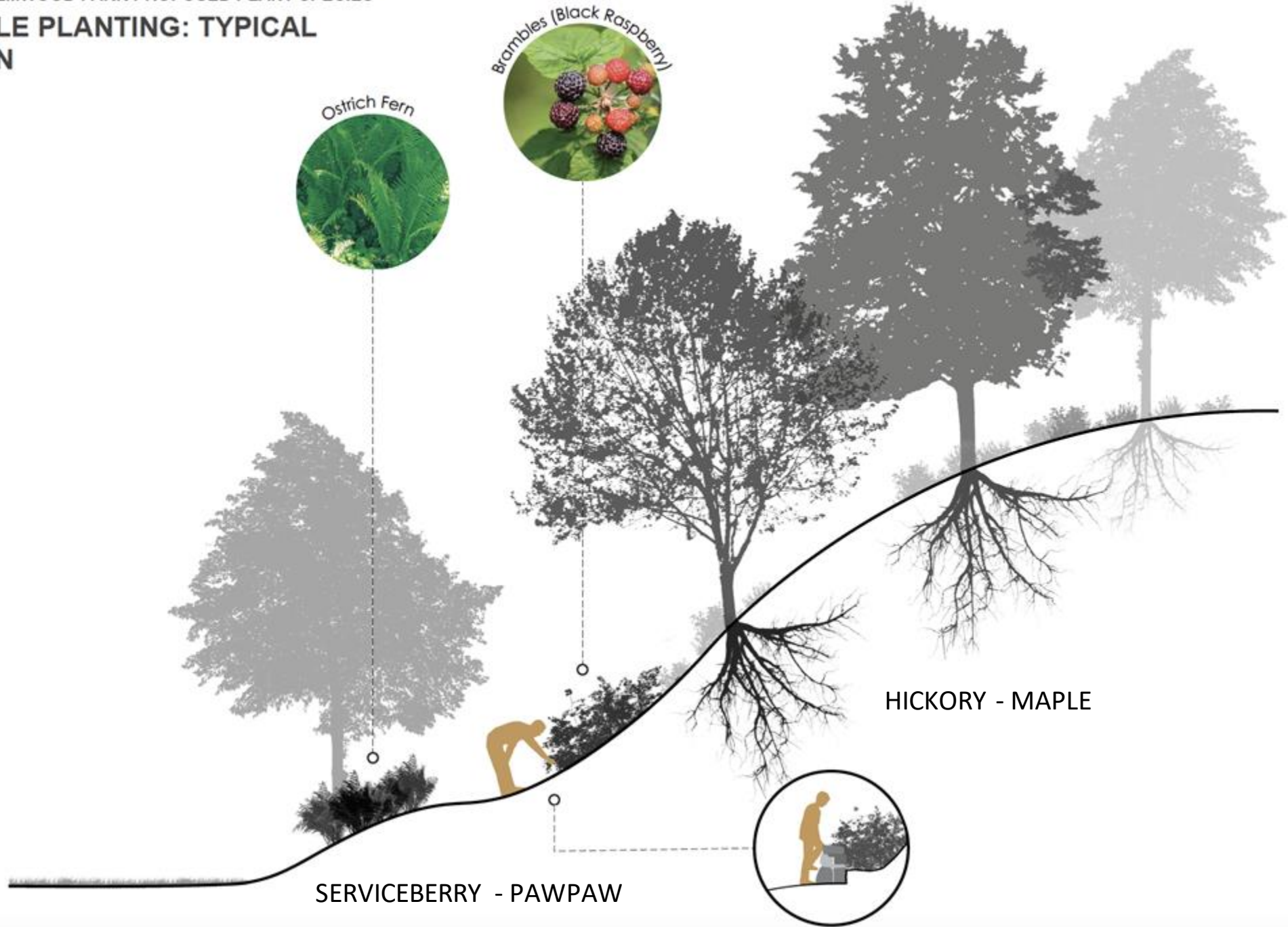
*Hickory*



*Ramps*



# BRAMBLE PLANTING: TYPICAL SECTION



# Shagbark Hickory (*Carya ovata*)



# Kingnut Hickory/ Shellbark Hickory (*Carya laciniosa*)



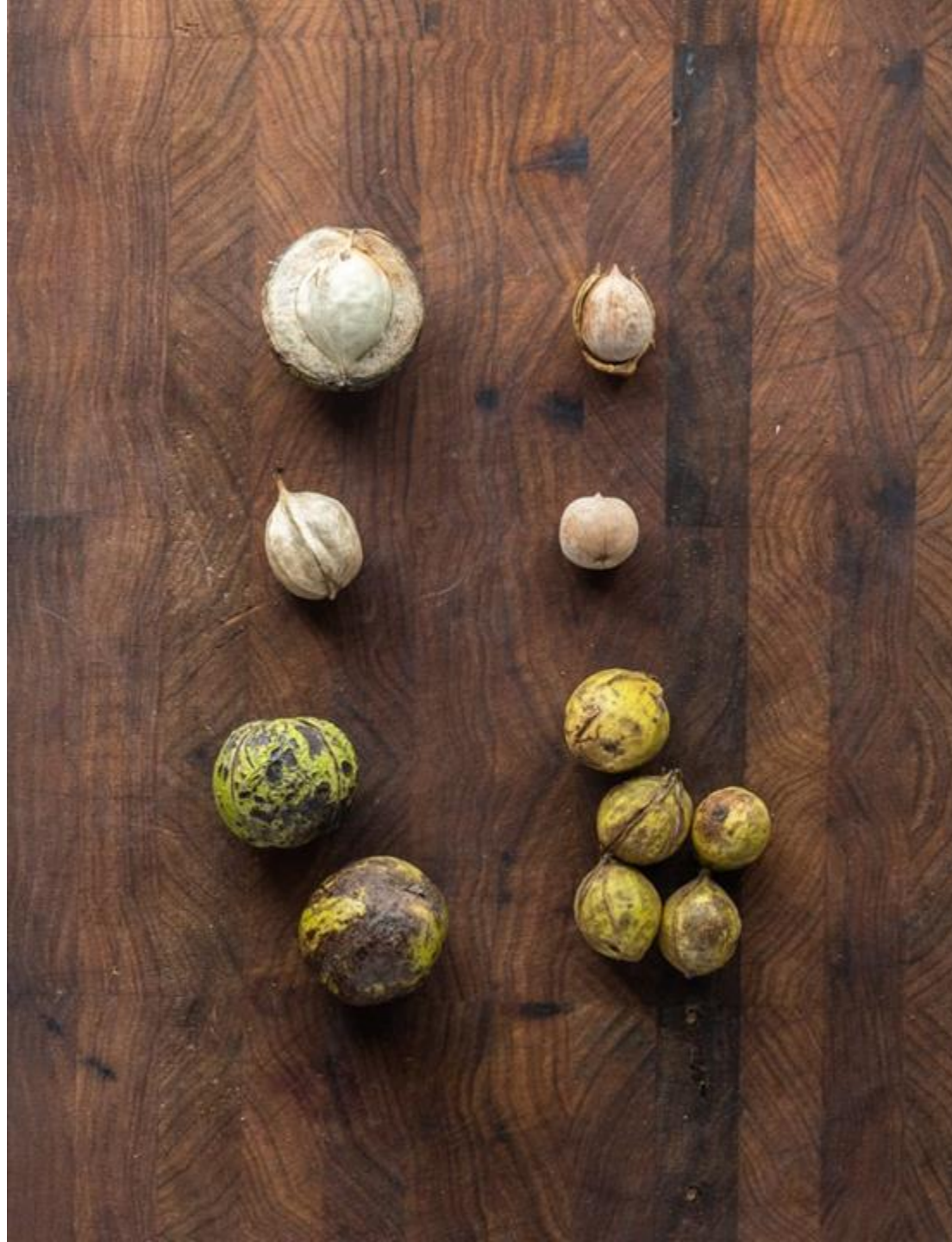
# Bitternut Hickory (*Carya cordiformis*)



# Shagbark Hickory Nuts



Nut Weasel



# Bitternut Hickory Nuts



# Bitternut Hickory Oil

Sam Thayer - <https://foragerchef.com/sam-thayers-bitternut-hickory-nut-oil/>

# Ecological zones

CORRIDOR



IMPERVIOUS COVER



CANOPY



BUILT ENVIRONMENT



OAK  
WOODLAND

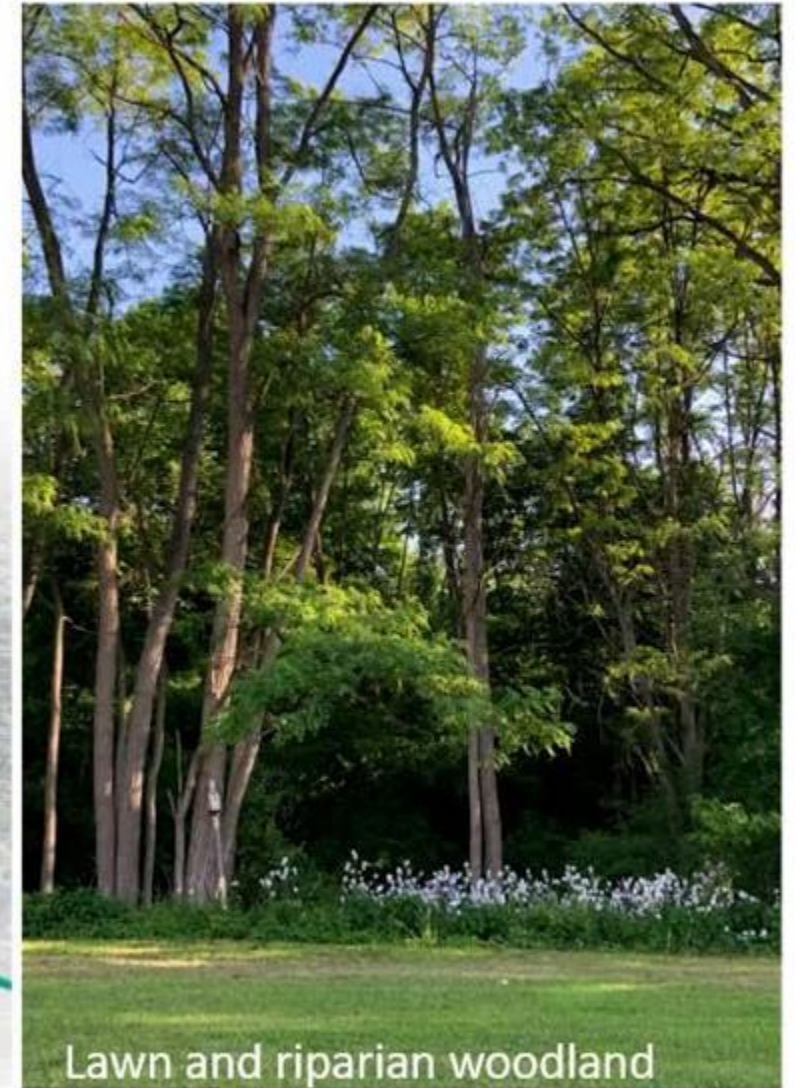
FORESTED  
WETLAND

RIPARIAN  
WOODLAND

MAPLE  
FOREST

LAWN

LAWN +  
FOREST EDGE

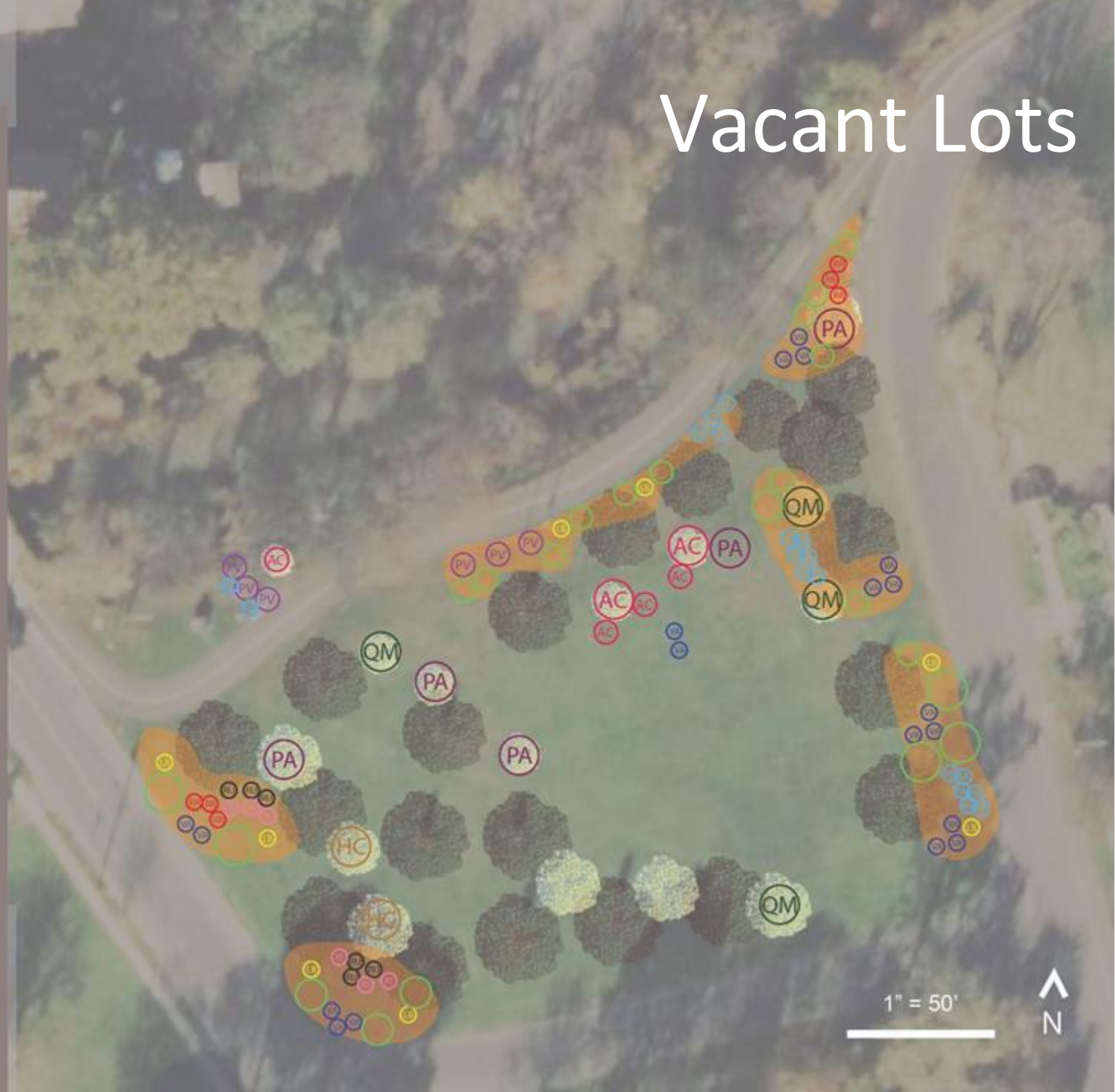


Lawn and riparian woodland

## HUDSON & RICH LOTS

- LB** Lindera benzoin  
Spicebush
- VA** Vaccinium angustifolium  
Lowbush Blueberry
- RR** Ribes rubrum  
Red Currant
- RU** Rubus ursinus  
Darrow Blackberry
- RI** Rubus idaeus  
Latham Red Raspberry
- PV** Prunus virginiana  
Chokecherry
- AC** Amelanchier canadensis  
Serviceberry
- QM** Quercus Muhlenbergii  
Chinkapin Oak
- HC** Castanea dentata x ...  
Hybrid Chestnut
- PA** Prunus americana  
Wild Plum
- RA** Rhus Aromatica  
Low Gro Sumac
- Mix of: Baptisia, Coneflower,  
Aster, Goldenrod, Little Blue Stem,  
Wild Bergamot, Anise Hyssop

# Vacant Lots







Oxford St.  
Vacant Lot



# ONONDAGA EARTH CORPS

---





**Kat Korba, Kanopy Works LLC**  
**Kat.Kanopy@gmail.com**

**Anni Bellows, SU Food Studies Department**  
**acbellow@syr.edu**

# **2nd** **World** **Forum on** **Urban** **Forests**

**2023**



**World Forum on  
Urban Forests**



# 2nd World Forum on Urban Forests

Washington DC, 2023

Holistic stewardship - engaging the public in all aspects of trees from seed to slab



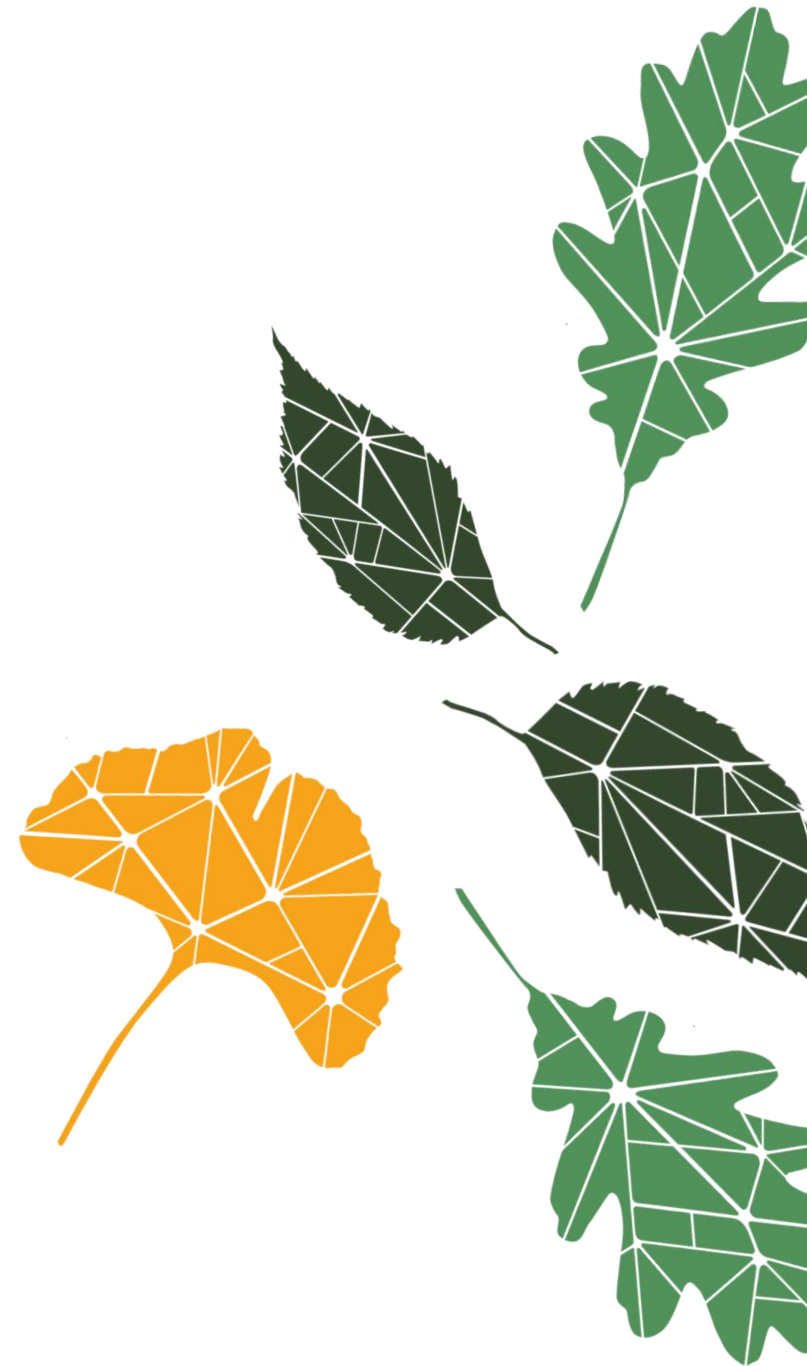
---

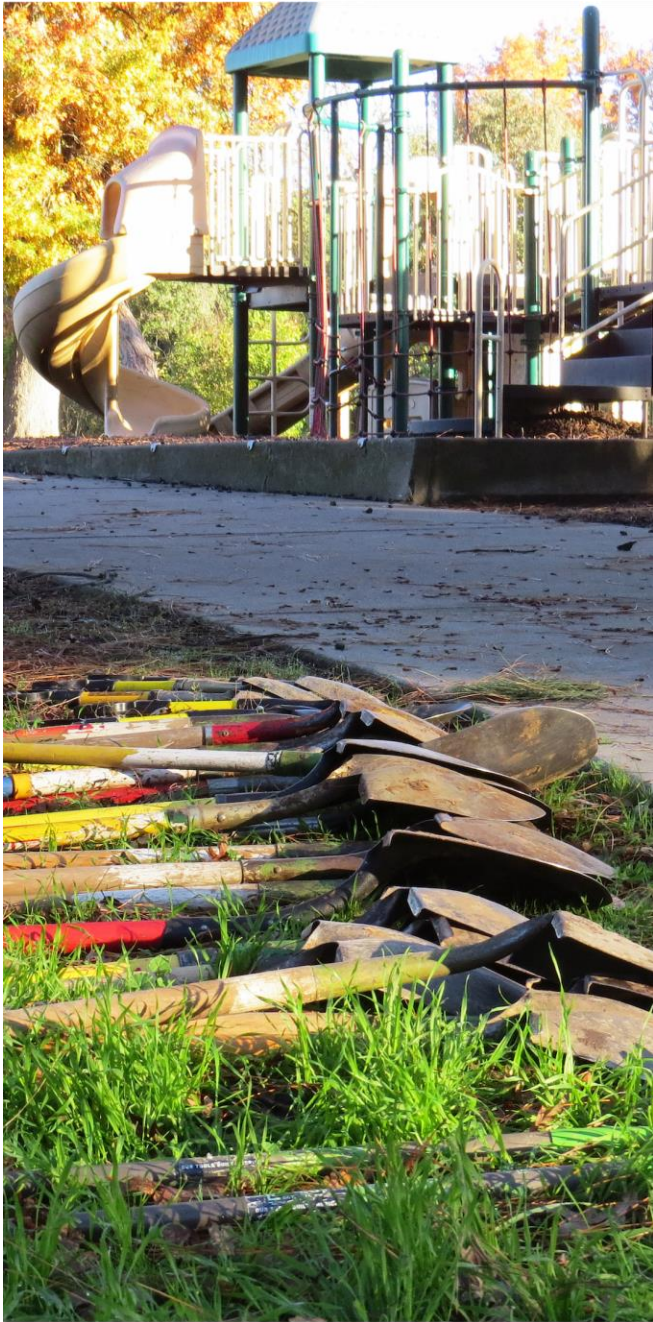
Presented by

Jessica Sanders PhD, PMP

Executive Director

Sacramento Tree Foundation

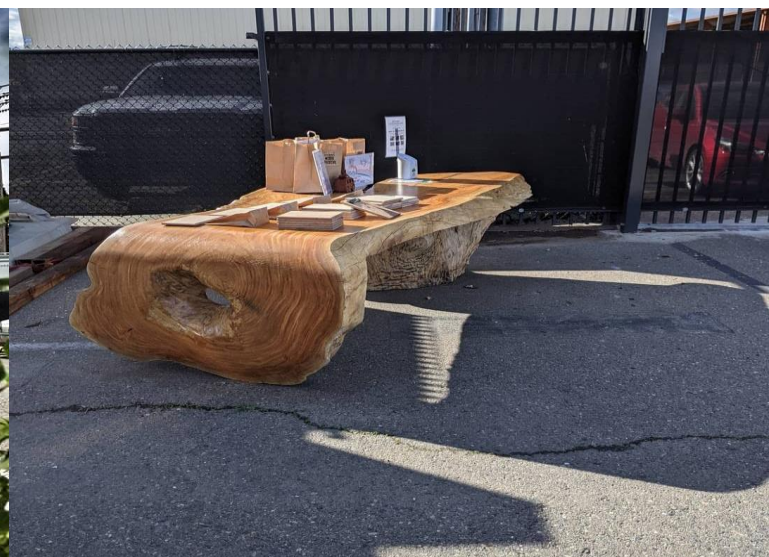








## Messaging - from Seed to Slab





## 2nd World Forum on Urban Forests

Washington DC, 2023



Engaging the next generation of environmental stewards.



## 2nd World Forum on Urban Forests

Washington DC, 2023

# Restoring natural spaces with kids of all ages





## 2nd World Forum on Urban Forests

Washington DC, 2023



Partnering with undercanopied communities to create lasting change



# 2nd World Forum on Urban Forests

Washington DC, 2023



# Honoring our region's trees when they are removed





## 2nd World Forum on Urban Forests

Washington DC, 2023



Placemaking for  
communities with  
trees



**2nd World Forum on  
Urban Forests**

Washington DC, 2023

# Focusing on equity internally

Our Healthy Forest is a Diverse One  
Our mission is to grow thriving communities through stewardship of our urban forest. We seek to honor the diversity and roots of this region by prioritizing equity internally and externally. We bring our whole selves and celebrate one another. From seed to slab, we work with communities to create live-able and loveable communities for everyone. And by everyone, we mean everyone.







# Thank you

Jessica Sanders PhD, PMP | Sacramento Tree Foundation

Executive Director

 [Jessica@sactree.org](mailto:Jessica@sactree.org)



Food and Agriculture  
Organization of the  
United Nations



Arbor Day  
Foundation



International Society of Arboriculture



Smithsonian



U.S. Forest Service  
Department of Agriculture

# **2nd** **World** **Forum on** **Urban** **Forests**

**2023**



**World Forum on  
Urban Forests**



# 2nd World Forum on Urban Forests

Washington DC, 2023

An ongoing study:

## Priorities for afforestation areas on a national scale



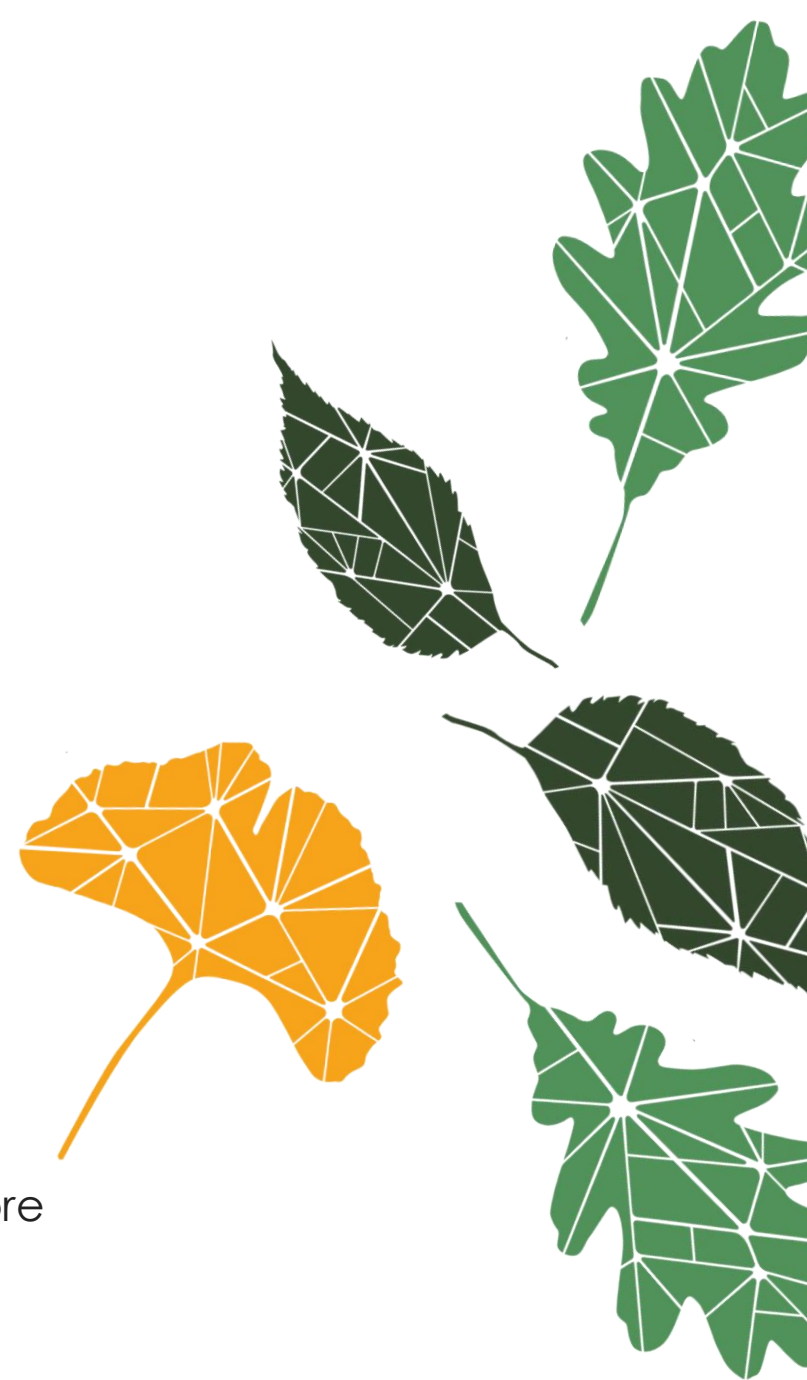
---

Presented by

Chiara Gibertini

Giorgio Vacchiano, Fabio Salbitano, Maria Chiara Pastore

Livia Shamir, Luis Pimentel and Simone Marchetti





## Tree restoration



## Territorial governance



3 billions trees by 2030

6.6 million trees in  
metropolitan cities by 2030

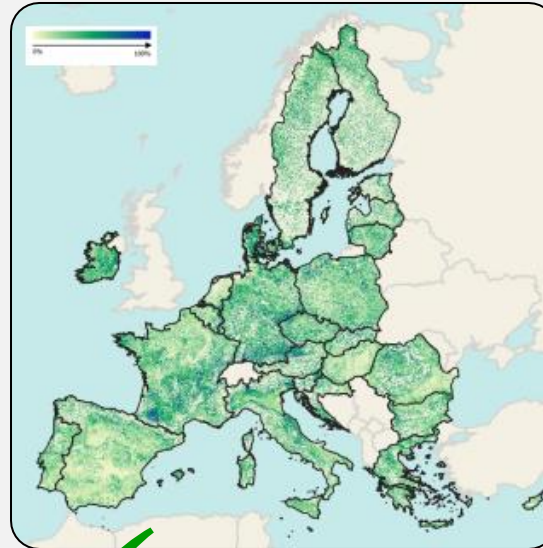
and

CO<sub>2</sub>  
compensation



Where?

## What already exists?



✓ Map of *natural tree  
restoration  
potential*

## What is missing?



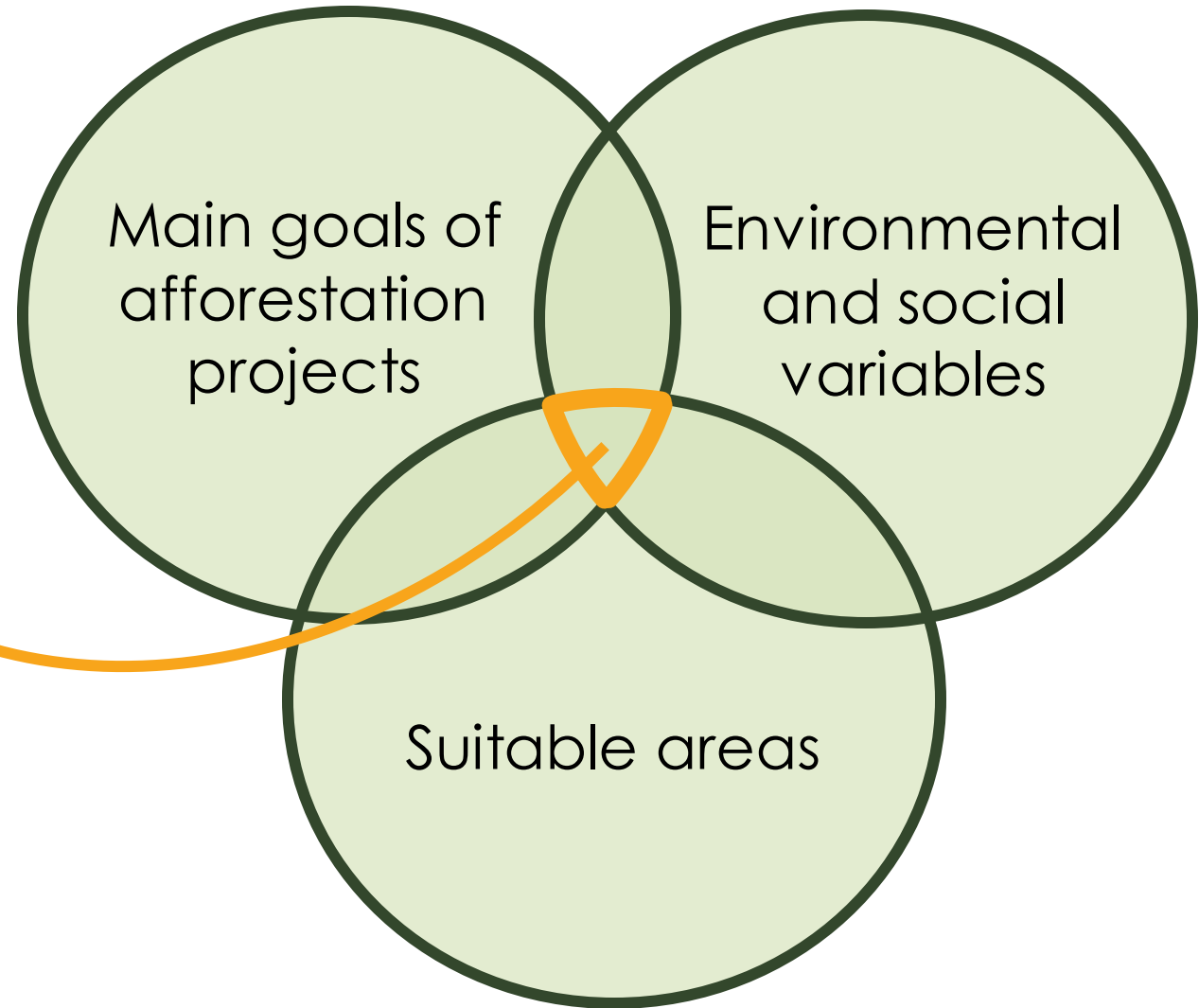
Mapping of priority  
areas for  
afforestation to  
maximize benefits





## Objective

Mapping of priority  
areas for afforestation  
on a national scale





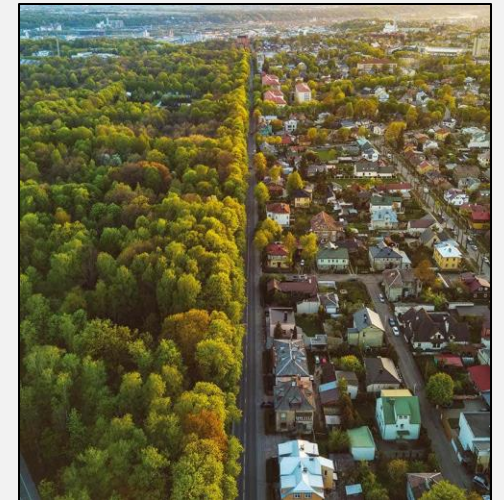
## Suitable areas

### Excluding:

- X** Existing forests - *Source: Corine Land Cover 2018*
- X** Impervious surfaces - *Source: Corine Land Cover 2018*
- X** Protected areas - *Source: World Database on Protected Areas (WDPA); Ramsar Sites Information Services*
- X** Wetlands - *Source: Corine Land Cover 2018*
- X** Elevations above 1 600 m

! Agricultural areas → agroforestry and/or planting along field edges

! Urban areas





## Main goals of afforestation projects

- Ecological connectivity and biodiversity conservation
- Restoration of degraded areas and ecosystems
- Protection from hydrogeological instability
- Carbon sequestration
- Urban afforestation and provision of ecosystem services
- Wood production



## Ecosystem Services & Biodiversity (Source: FAO)



Habitat for species; Pollination



Habitat for species



Moderation of extreme events



Carbon sequestration and storage



Local Climate Air Quality;  
Recreation and mental and physical  
health; Aesthetic appreciation and  
inspiration for culture, art and design



Raw materials



Regulation of Water Flow



## Environmental and social needs



## Variables



- Spatially explicit
- Mapping available on a national scale

- Distribution of protected and/or natural areas (e.g. distance to the nearest protected area - Source: WDPA; Ramsar Sites Information Services)
- Climatic and environmental conditions (e.g. future temperature trend - Source: ClimateEU)
- Land use (e.g. habitat fragmentation - Source: G.Vacchiano & S.Galimberti)
- Anthropic presence (e.g. population density per municipality - Source: ISTAT 2022)
- Prevention (e.g. hydrogeological risk from superficial landslides and floods - Source: ISPRA)





Main goals of  
afforestation projects



Variables

There are others?

There are others?  
What are their weights?



**Survey** among experts in:

- Forestry
  - Agronomy
  - Ecology
- from all regions of Italy

Structured interview

Semi-quantitative data  
*(high, medium, low  
weight of variables)*

Distributed online



A raster file made with GIS with a resolution of 1 km

For each main goal ( $y_j$ ), each point is assigned a score  $S_j$  between 0 and 100

$$S_j = \sum_i x_i \cdot w_{ij}$$





A raster file made with a resolution of 1 km

For each main goal ( $y_j$ ), each point is assigned a score  $S_j$  between 0 and 100

$$S_j = \sum_i x_i \cdot w_{ij}$$

Each variable  $x_i$  can take values between 0 and 1

The weight  $w_{ij}$  of variable  $x_i$  for the main goal  $y_j$ .  $0 \leq w_{ij} \leq 100$

From the survey responses:  
high = 3, medium = 2, low = 1  
weight of variables



Square of  
mean value

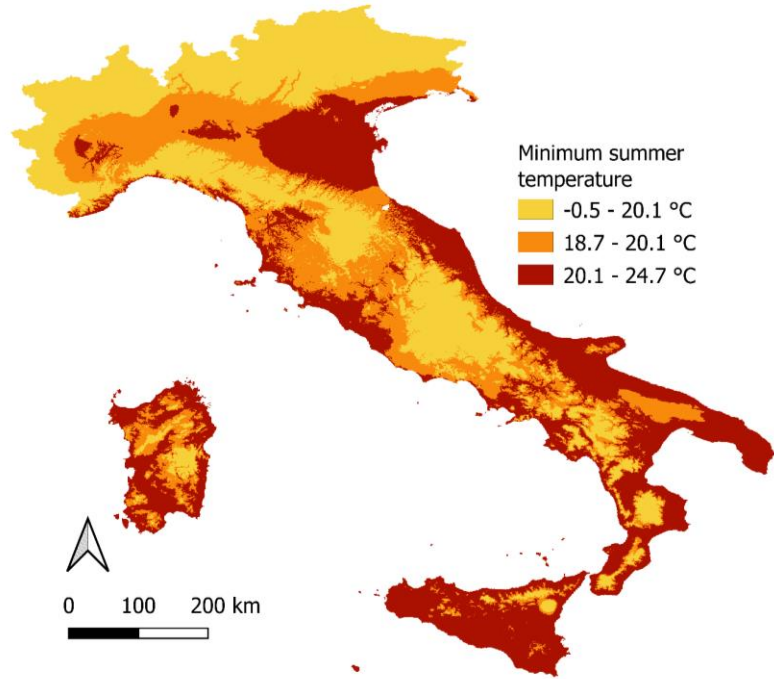


Percentage  
value on the  
total sum



# 2nd World Forum on Urban Forests

Washington DC, 2023

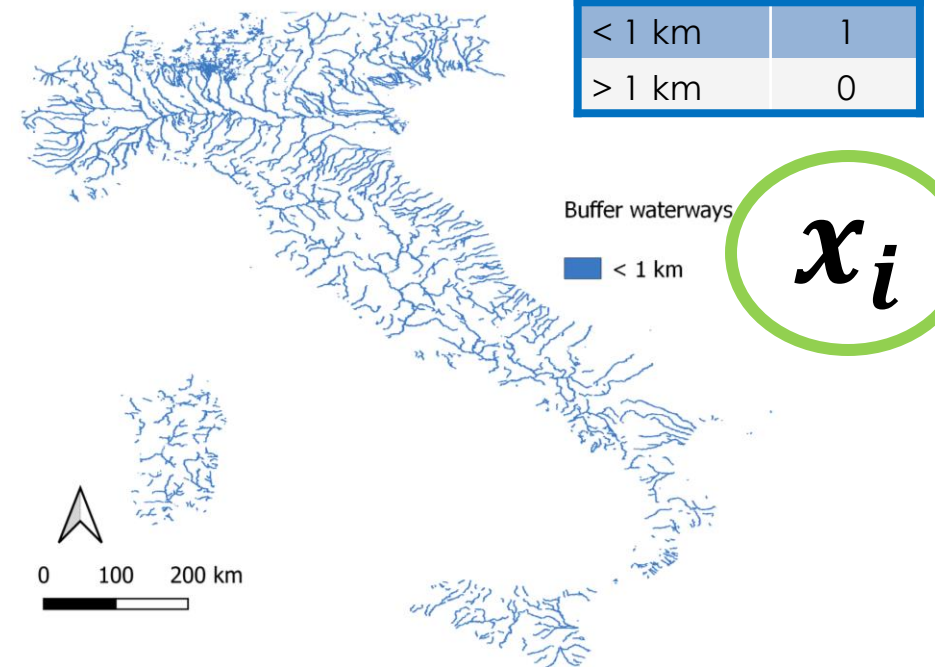


20.1°C - 24.7 °C	1
18.7°C - 20.1 °C	0.2
-0.5°C - 18.1 °C	0

$x_i$

$W_{ij}$

	Ecological connectivity and biodiversity conservation	Urban afforestation and provision of ecosystem services
Minimum summer temperature	10	15
Proximity to waterways	13	7

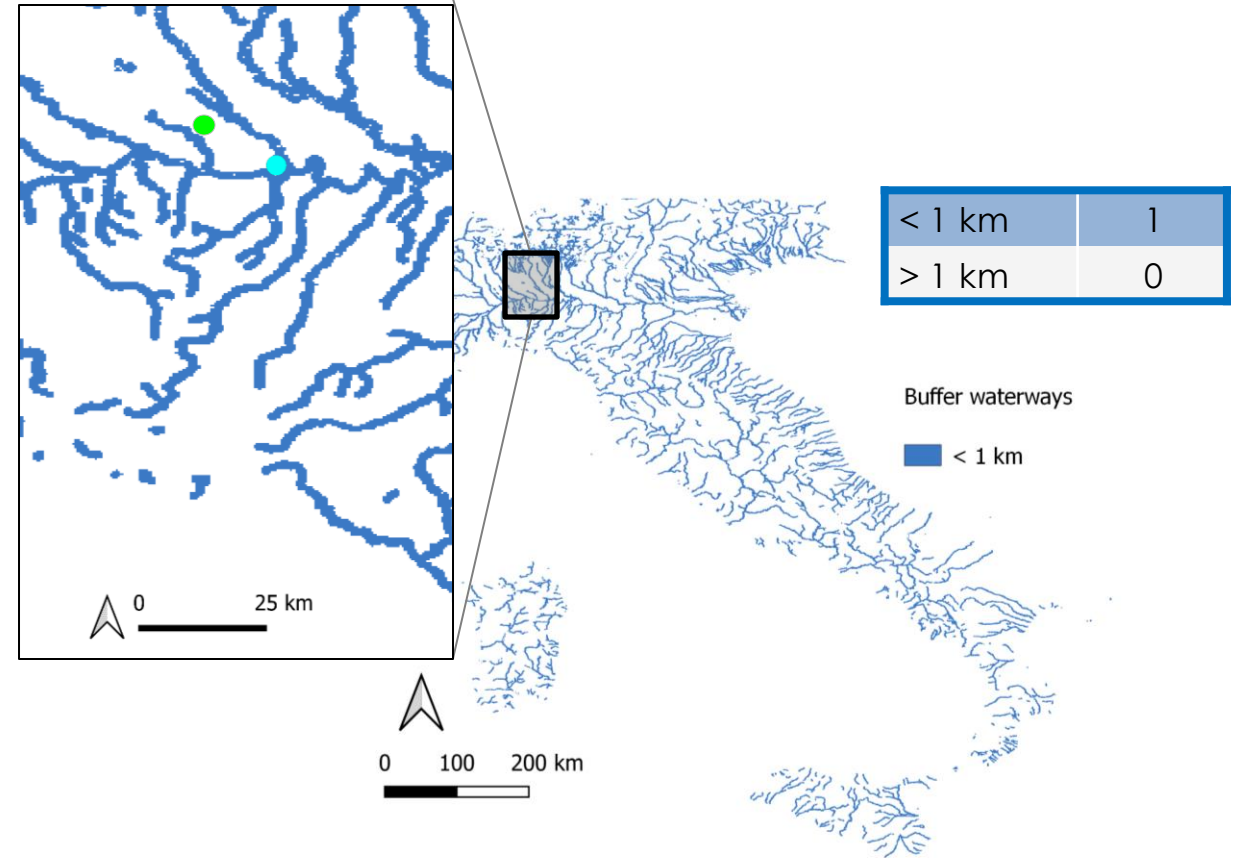
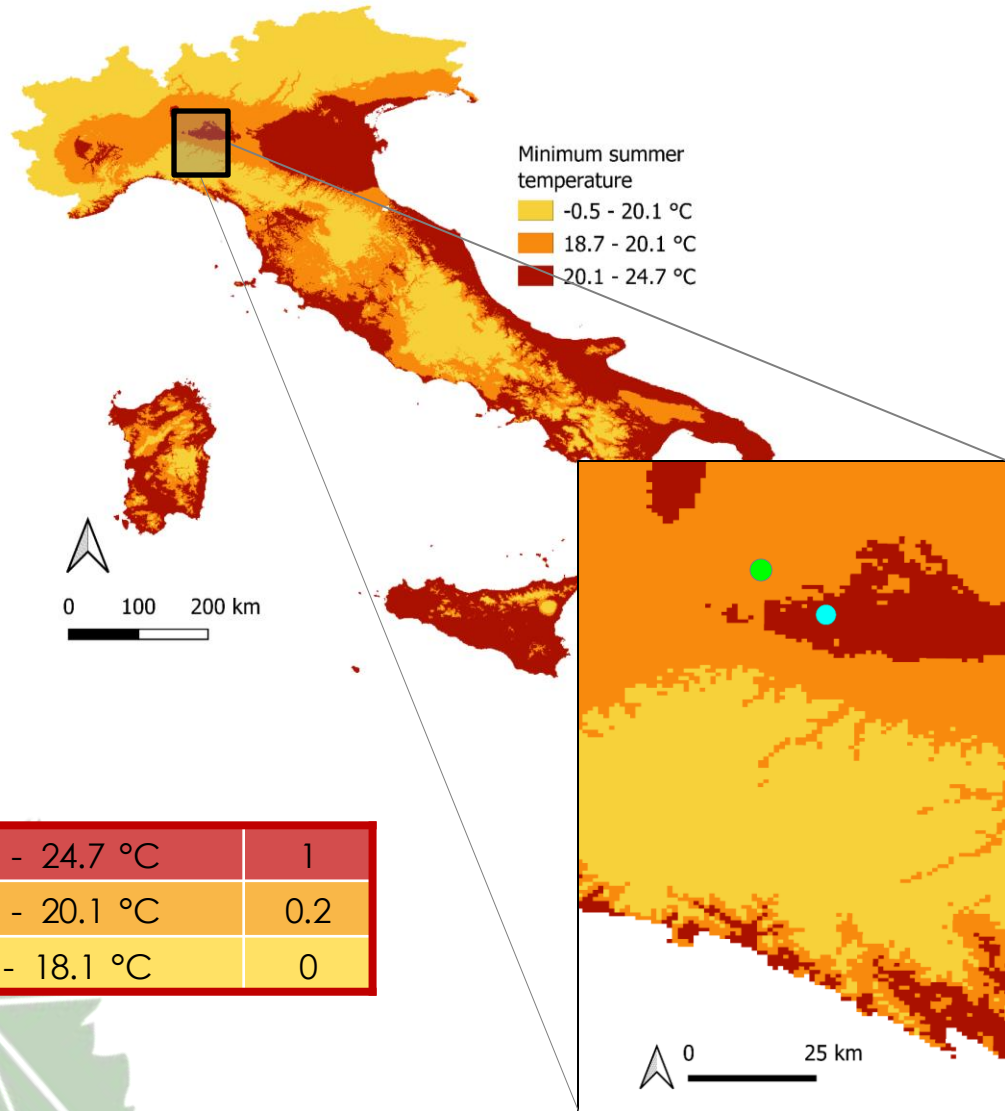


$x_i$



# 2nd World Forum on Urban Forests

Washington DC, 2023





# 2nd World Forum on Urban Forests

Washington DC, 2023

$$S_j = \sum_i x_i \cdot w_{ij}$$



Ecological connectivity and biodiversity conservation

$$0.2 \times 10 + 0 \times 13 + \dots$$

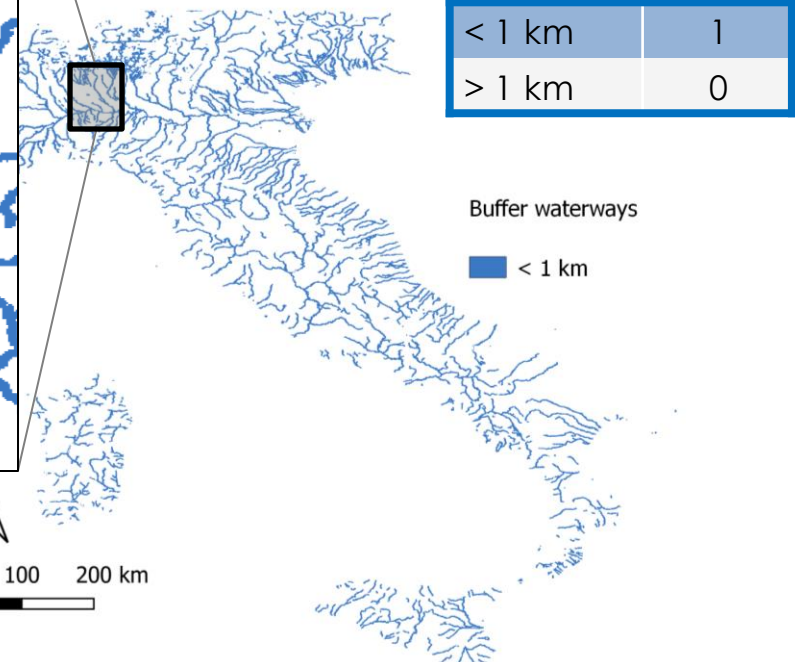
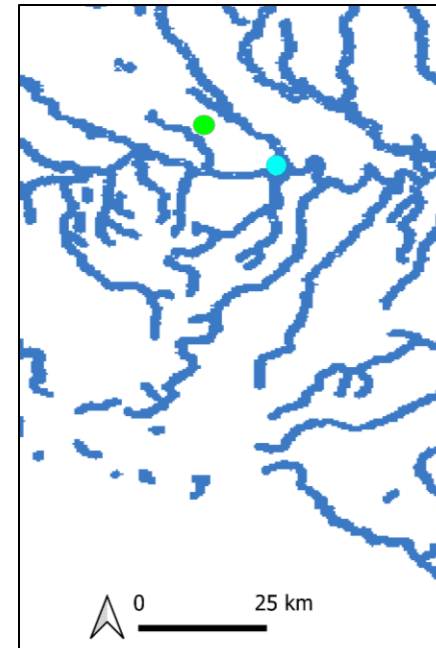
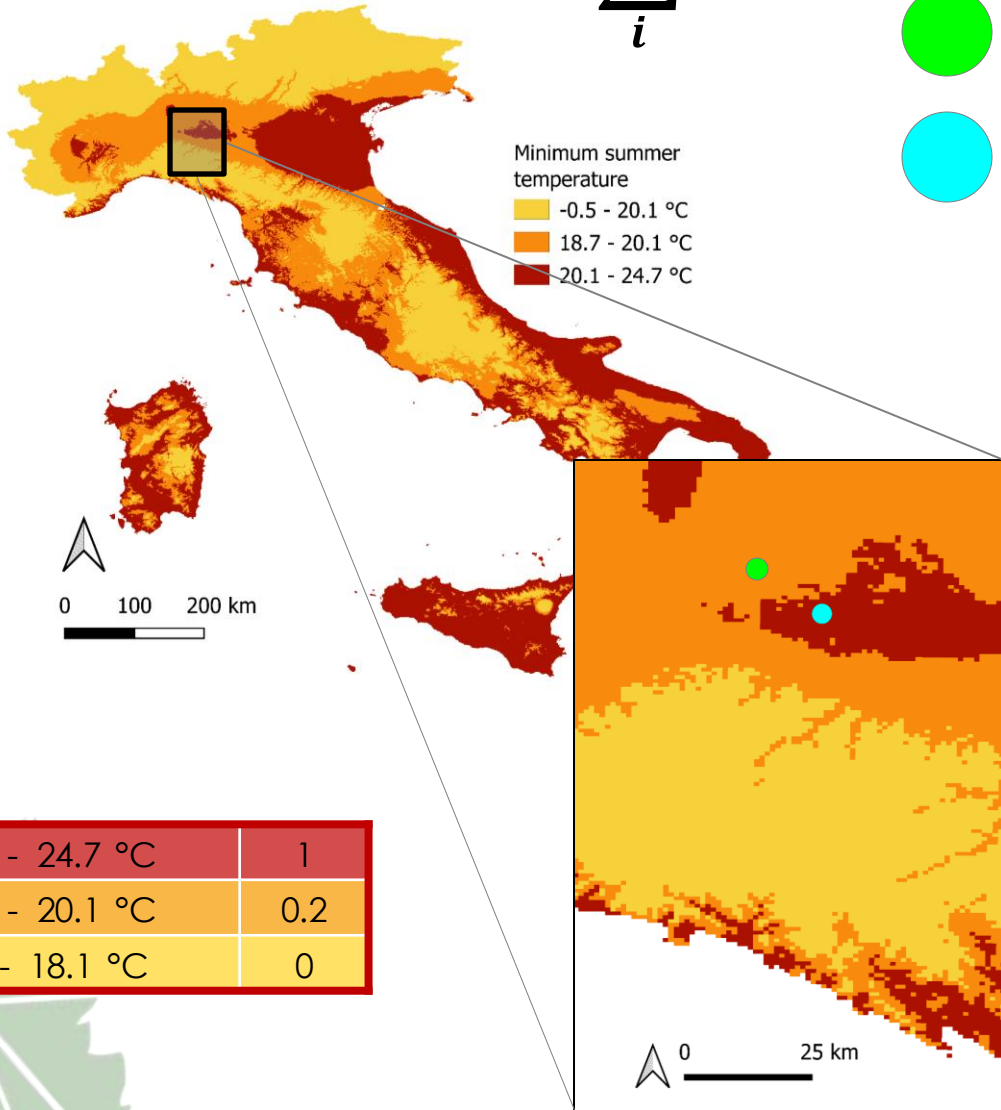
Urban afforestation and provision of ecosystem services

$$0.2 \times 15 + 0 \times 7 + \dots$$



$$1 \times 10 + 1 \times 13 + \dots$$

$$1 \times 15 + 1 \times 7 + \dots$$





## Survey results

- > 200 responses
- From all regions of Italy

	Ecological connectivity and biodiversity conservation	Urban afforestation and provision of ecosystem services
Habitat fragmentation	17	8
Proximity to roads and railways	7	9
Presence of tourist/cycling itineraries	7	11
Minimum summer temperatures	8	13
Future temperature trend	10	13
Exceeding the daily PM10 limit value	7	14
Density population per municipality	3	11
Hydrogeological risk from superficial landslides and floods	10	5
Post-fire recovery potential	9	5
Proximity to waterways	11	7
Distance from protected natural areas	10	4





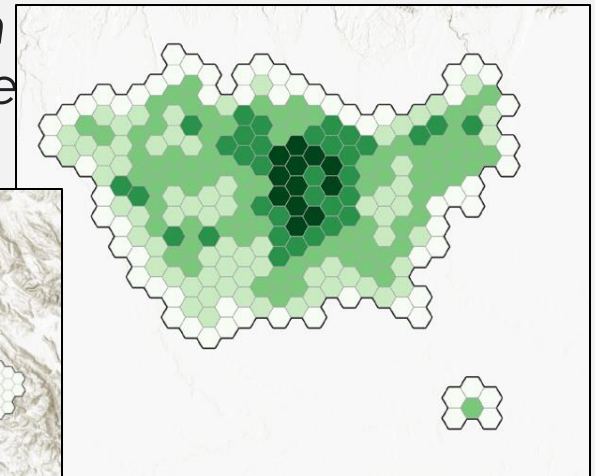
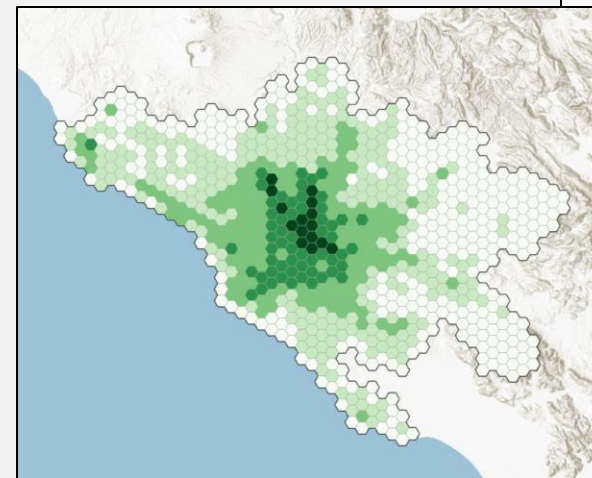
## Ecological connectivity and biodiversity conservation



## Preliminary results of mapping

Urban afforestation and  
provision of ecosystem  
services

on the 14 Italian  
cities



Metropolitan Cities of  
Milan  
and Rome







## Conclusions

- These maps can be used as first support to planning decisions at the regional or provincial scale.
- The same system of scores could be used on a much finer scale to optimize the actual location of each afforestation project → Urban forest

For the future:

- Expand the study to other main goals;
- Add more variables →  Attention to multicollinearity problems  
 Availability of adequate maps on a national scale



# Thank you

Chiara Gibertini  
University of Milan

✉ [Chiara.gibertini@unimi.it](mailto:Chiara.gibertini@unimi.it)

Chiara Gibertini<sup>1</sup>, Giorgio Vacchiano<sup>1,2</sup>, Fabio Salbitano<sup>2,3</sup>, Maria Chiara Pastore<sup>4</sup>,  
Livia Shamir<sup>5</sup>, Luis Pimentel<sup>5</sup> and Simone Marchetti<sup>5</sup>



UNIVERSITÀ  
DEGLI STUDI  
DI MILANO



UNISS  
UNIVERSITÀ  
DEGLI STUDI  
DI SASSARI



POLITECNICO  
MILANO 1863

**30ERI**  
STEFANO  
BOERI  
ARCHITETTI

**AlberItalia**  
FONDAZIONE ETS

<sup>1</sup> Department of Agricultural and Environmental Sciences, Università degli Studi di Milano, Italy; <sup>2</sup> Fondazione AlberItalia ETS, Santa Sofia, Italy;

<sup>3</sup> Department of Agriculture, Università degli studi di Sassari, Sassari, Italy; <sup>4</sup> Politecnico di Milano, Milan, Italy; <sup>5</sup> Stefano Boeri Architetti, Milan, Italy



Food and Agriculture  
Organization of the  
United Nations



Arbor Day  
Foundation



POLITECNICO  
MILANO 1863



International Institute of  
Agroforestry



Smithsonian



FOREST SERVICE  
U.S. DEPARTMENT OF AGRICULTURE

# **2nd** **World** **Forum on** **Urban** **Forests**

**2023**



**World Forum on  
Urban Forests**



# 2nd World Forum on Urban Forests

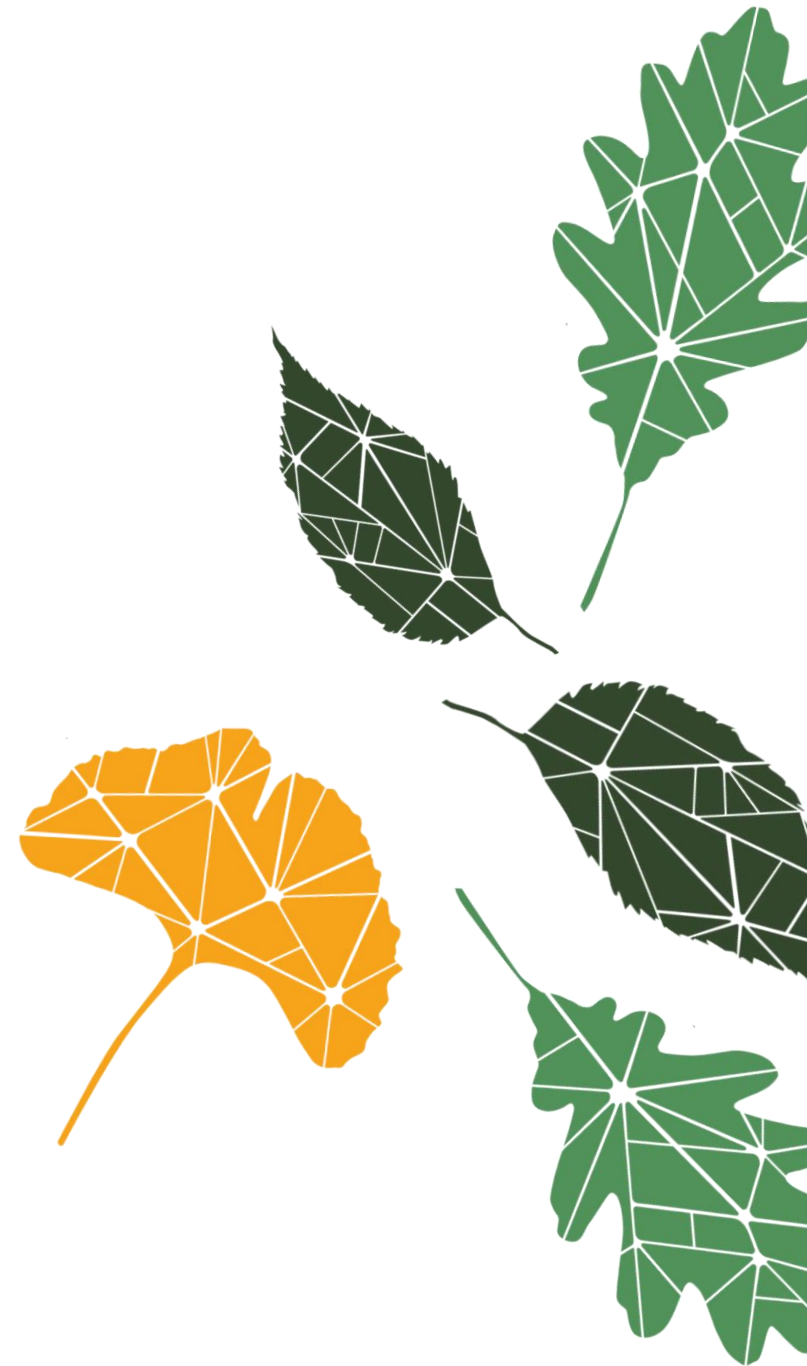
Washington DC, 2023

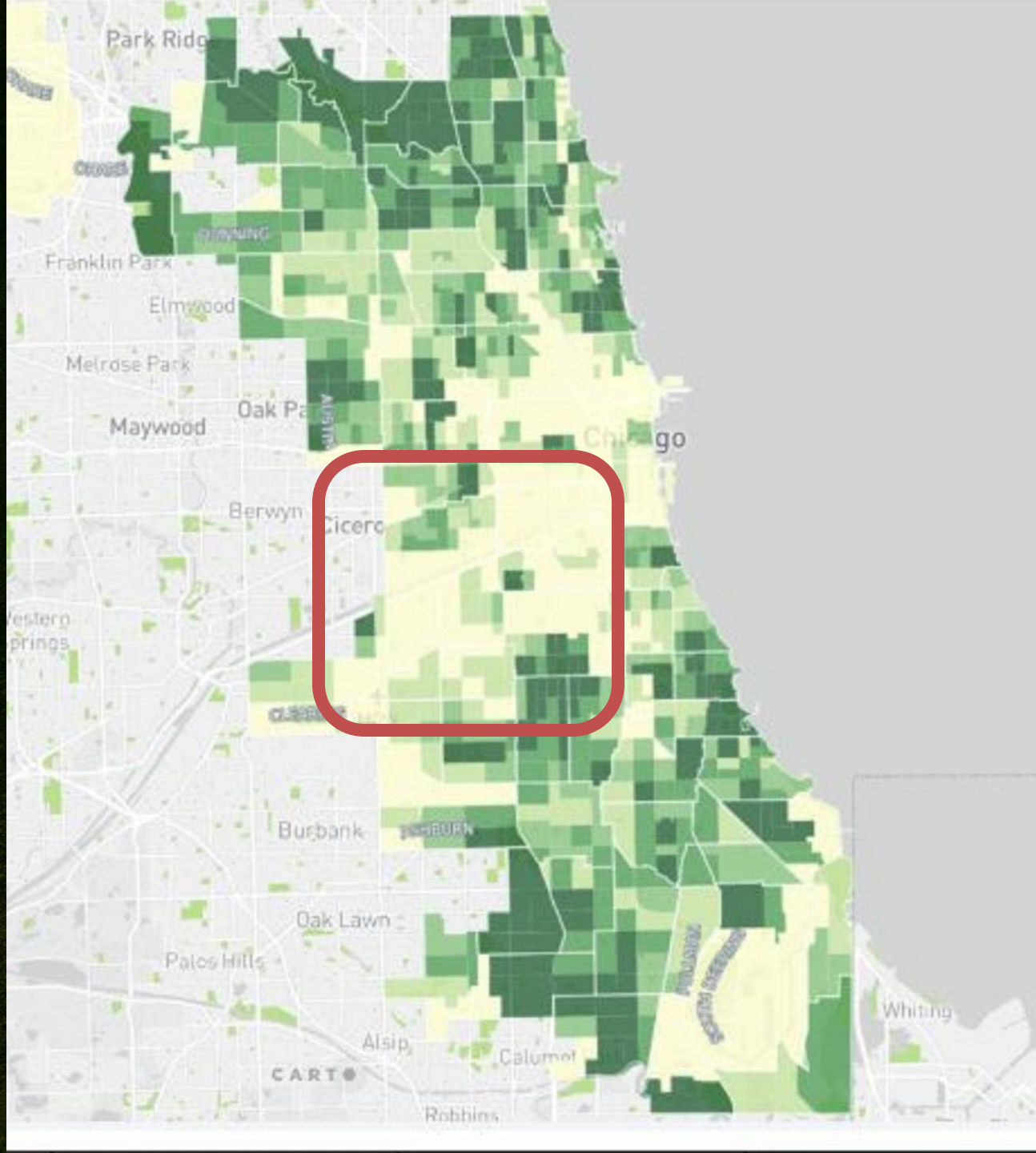
## Overcoming Barriers to Community Tree Planting in Chicago, Illinois, USA



---

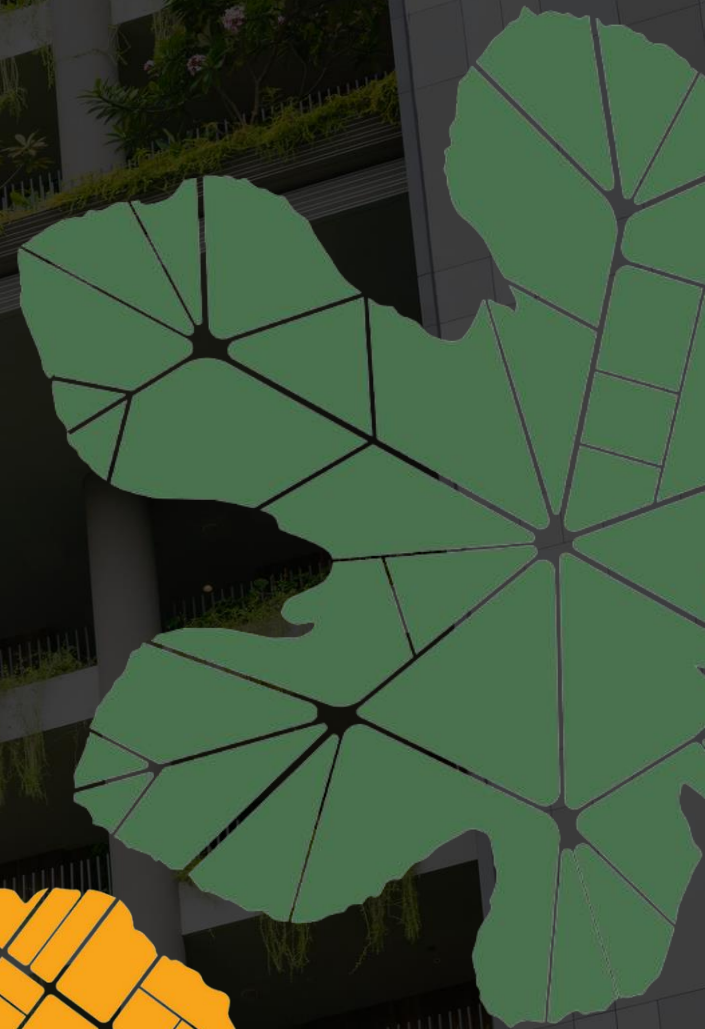
Presented by  
Tom Ebeling  
Community Arborist  
Openlands





# Openlands

Openlands protects the natural and open spaces of northeastern Illinois and the surrounding region to ensure cleaner air and water, protect natural habitats and wildlife, and help balance and enrich our lives.



# Openlands Forestry: Overcoming Barriers through Partnerships

Over 9,000 trees to date

Over 1,900 TreeKeepers trained

Greater than 90% success rate for trees





# Barriers to Tree Planting

- ❖ Access to land,  
tools, trees or time
- ❖ Expertise
- ❖ Maintenance
- ❖ City ordinances
- ❖ Language







**Barriers:** Access to land, tools, trees or expertise;  
prohibitive city ordinances

**Addressing barriers:** Openlands TreePlanters Grant





## 2nd World Forum on Urban Forests

Washington DC, 2023





**Barriers:** Maintenance; expertise  
**Addressing barriers:** Openlands TreeKeepers;  
Arborist Registered Apprentices





# 2nd World Forum on Urban Forests

Washington DC, 2023



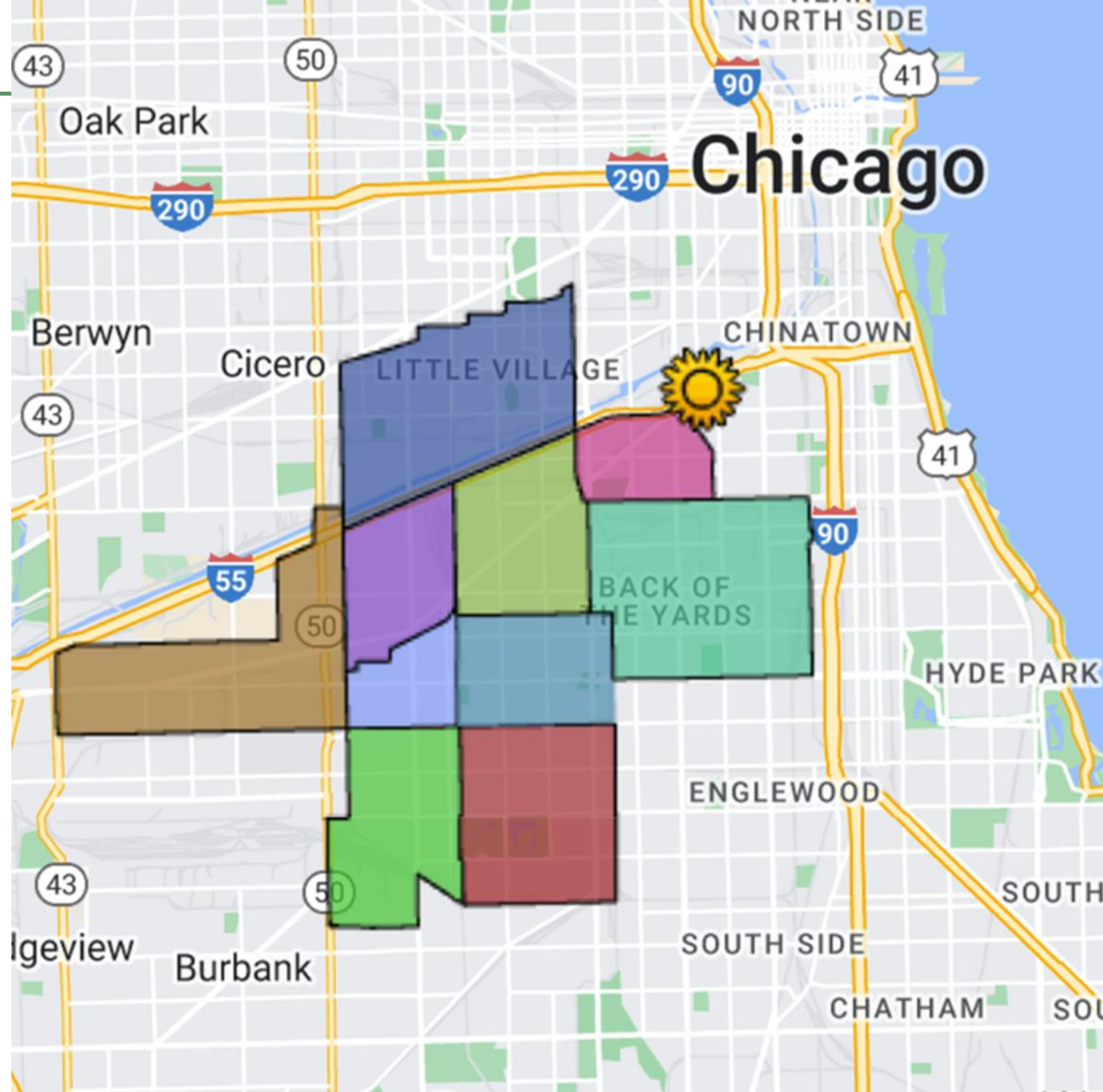


## 2nd World Forum on Urban Forests

Washington DC, 2023

**Barriers:** Language, lack of free time, maintenance ability

**Addressing barriers:** Southwest Side priority area, Spanish TreeKeepers, stipends, building staff capacity





# 2nd World Forum on Urban Forests

Washington DC, 2023



## Plantación de árboles

# ¿DESEA PLANTAR GRATUITAMENTE UN ÁRBOL EN SU ARCÉN?

¡Deja que Openlands sepa que quieres árboles en su barrio!



Utilice el siguiente código QR para solicitar un árbol (o árboles) para su acera, y le pondremos en contacto con alguien que esté organizando una plantación de árboles en su comunidad. Se le pedirá que cuide del árbol durante 3 años, principalmente regándolo una vez a la semana durante la temporada de crecimiento.



Inquilinos pueden someter aplicaciones si lo comunican con los dueños de la propiedad.

### ¿Preguntas?

Nuestros expertos están a su disposición.

Tom Ebeling

[TEbeling@openlands.org](mailto:TEbeling@openlands.org)

# Overcoming the Barriers: Partnerships, Training, Capacity Building

Navigating bureaucracy, lending legitimacy and expertise

Leveraging corporate and institutional partnerships for community vision

Training and empowering volunteers, developing the forestry workforce

Stipends, accessible materials and programming







# Thank you

Tom Ebeling | Openlands

✉ [tebeling@openlands.org](mailto:tebeling@openlands.org)



Food and Agriculture  
Organization of the  
United Nations



Arbor Day  
Foundation





# CEUs

Session 2.4: The Divide: Promoting equal distribution of green spaces and environmental services



PP-23-3565



World Forum on  
Urban Forests