



World Forum on
Urban Forests
Mantova 2018

*Your session here: e.g
PS 1.1 Changing people*

The potential influence of nursery offerings on tree species diversity in new Beijing plain afforestation

Zhenkai Sun

Research Institute of Forestry, Chinese Academy of
Forestry

Research Centre of Urban Forestry





**World Forum on
Urban Forests**
Mantova 2018

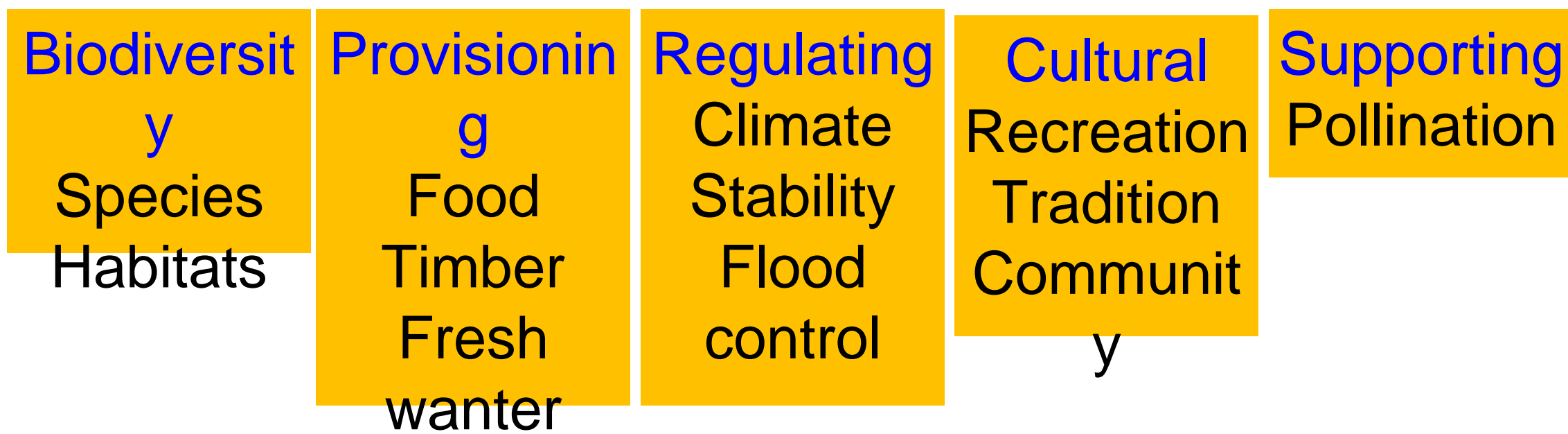
OUTLINE

- Background
- Data and methods
- Results and discussions
- Conclusions

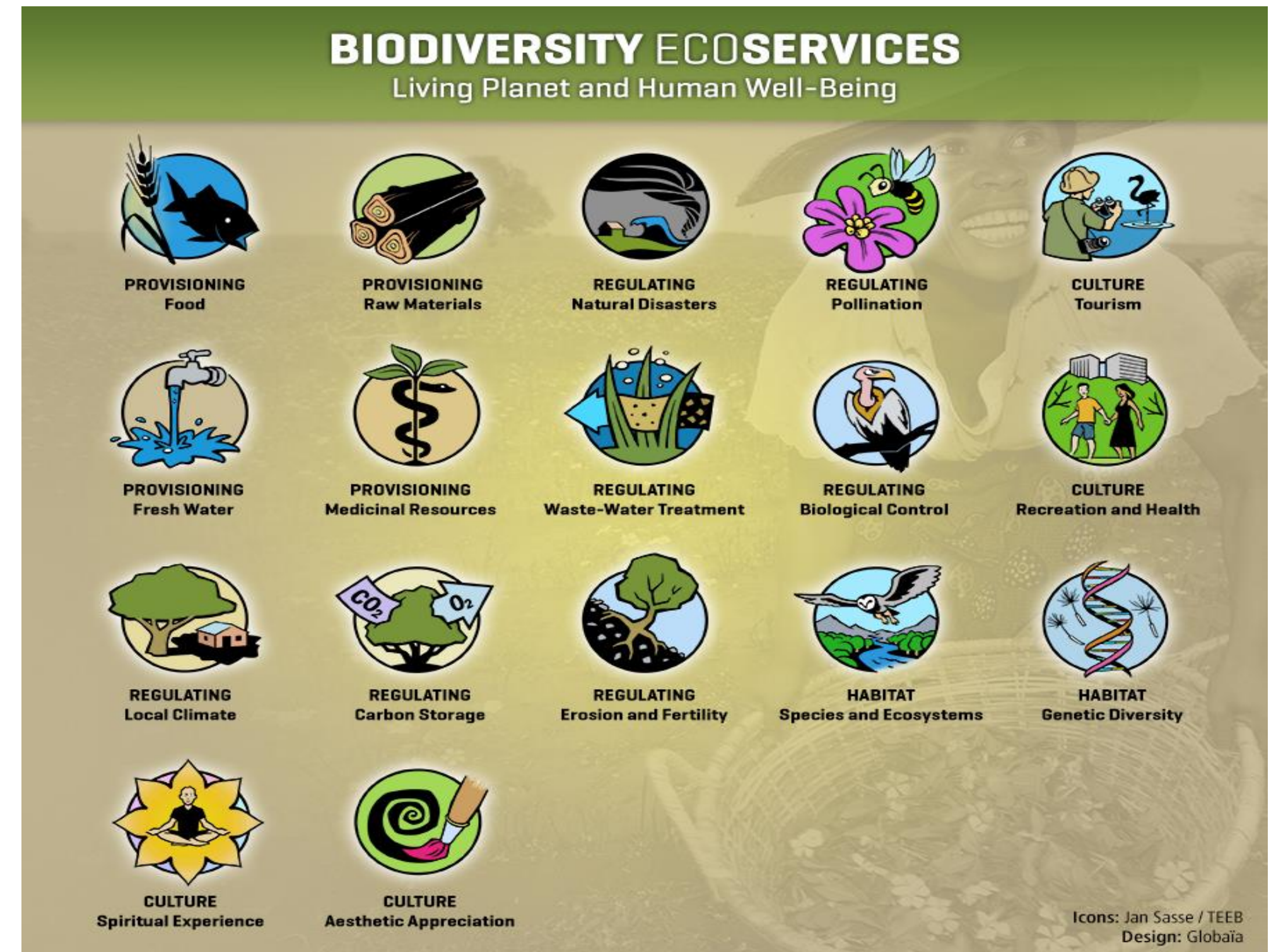
Background

- **Urban forests** have numerous environmental, economic and social benefits, contributing enormously to the health and welfare of everyone who lives and works in urban areas (Arsal & Johar, 2016).

- **Urban biodiversity** is considered to be the foundation of a healthy urban ecosystem (Yang et al, 2016).

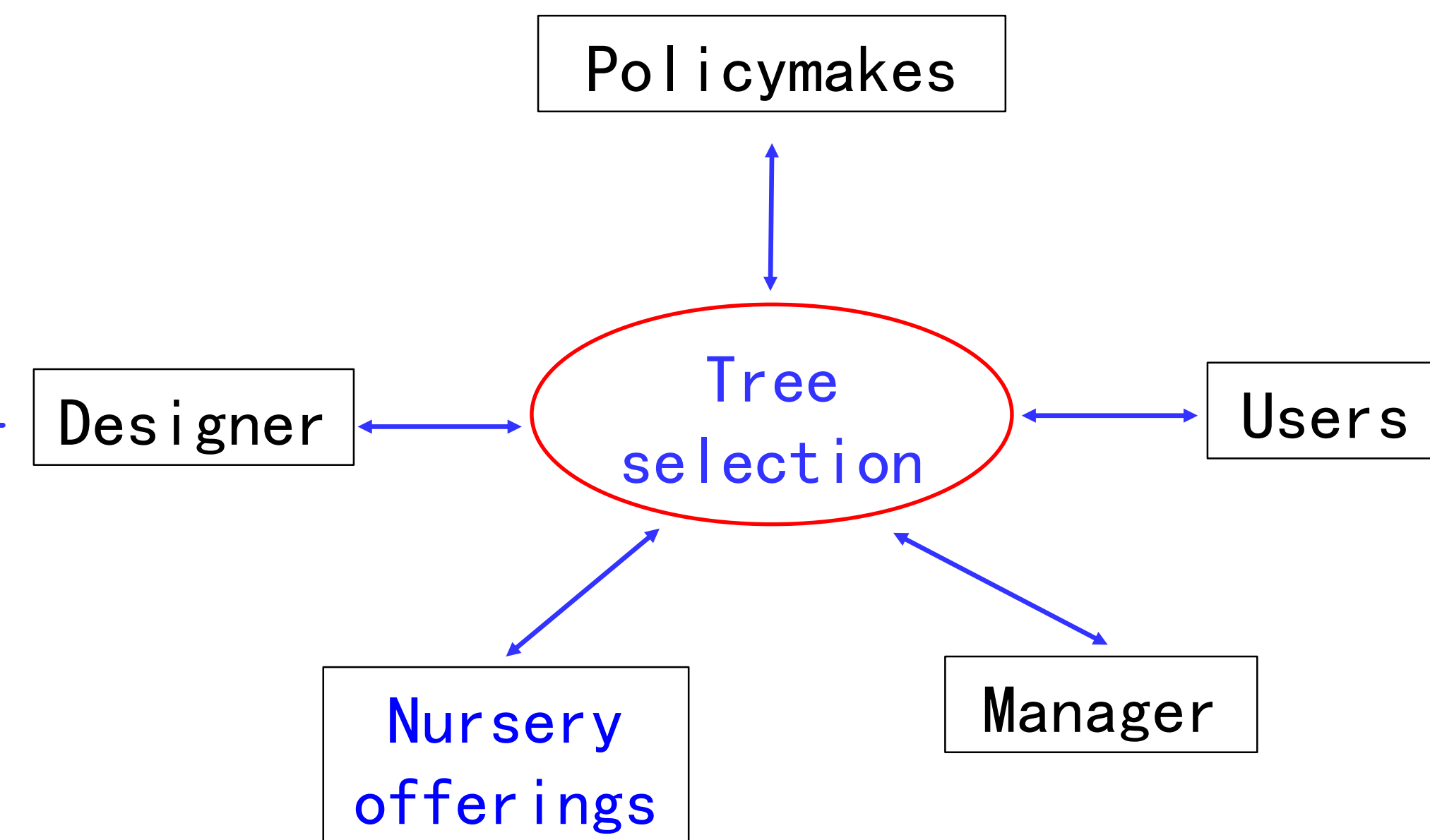
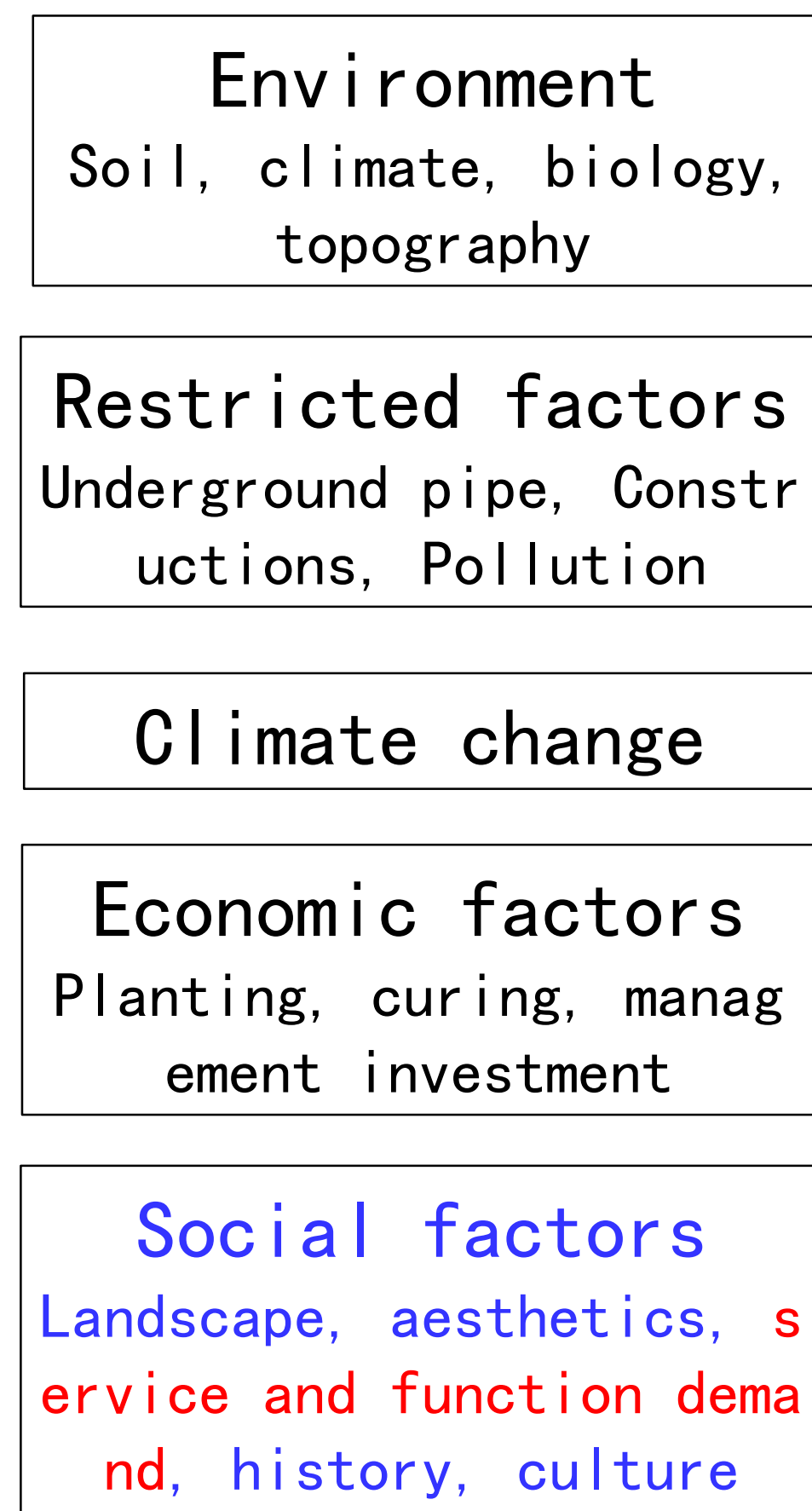


(Daily et al. 2009)



Background

- Most of the urban forests in China are artificial forestation.
- There were many factors influencing the selection of trees when they started afforestation, such as price, **nursery offerings**, and plant positions (Avolio et al, 2018).



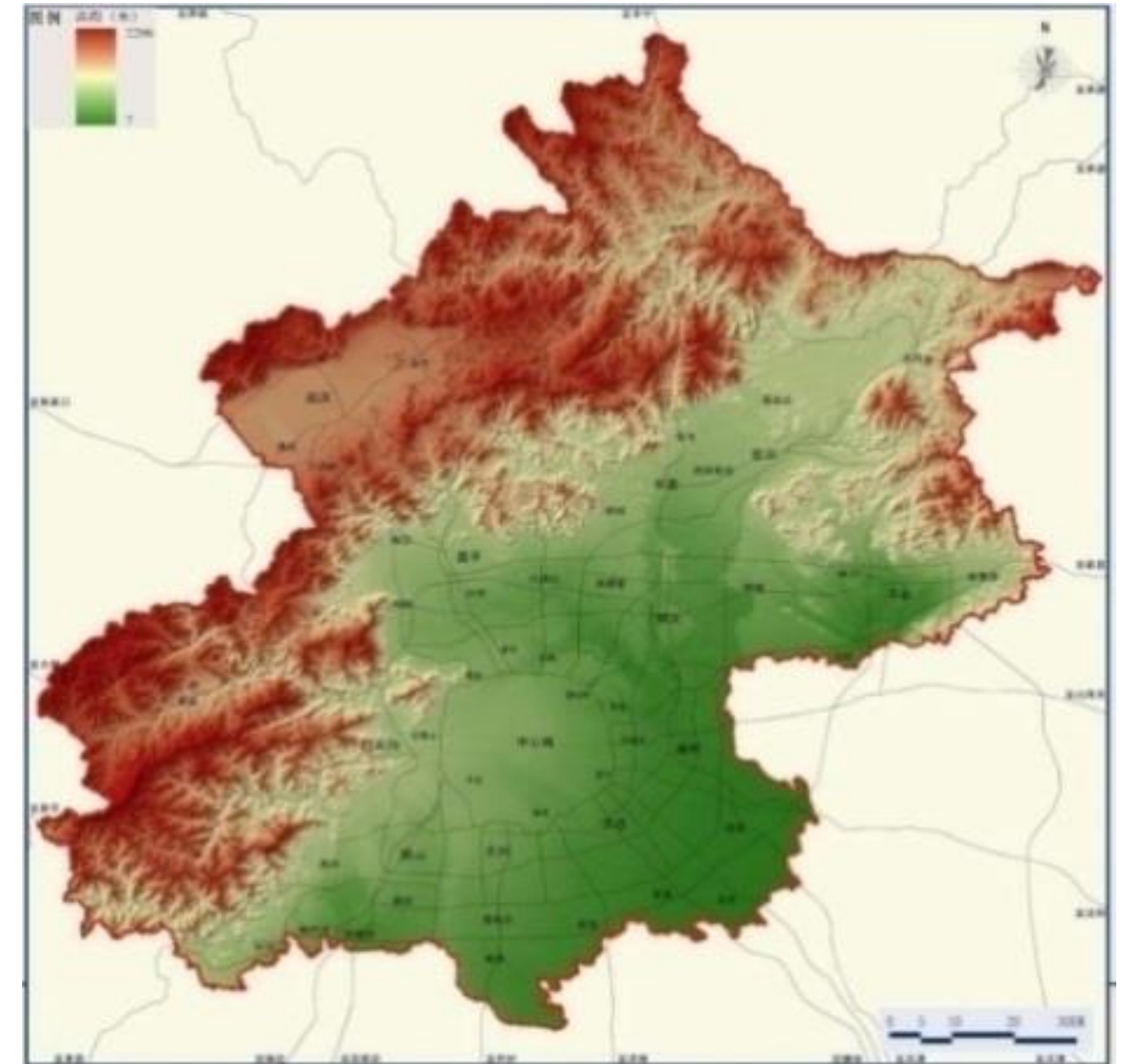
The tree selection patterns

Nursery offerings is one of the key drivers of urban tree community composition and diversity.



Background

- **Beijing** is the capital of China.
- Total area of 1,6410 km² with 21.69 million people.
- Plain area is about 6,338 km², accounting for 38.6% of the total area.

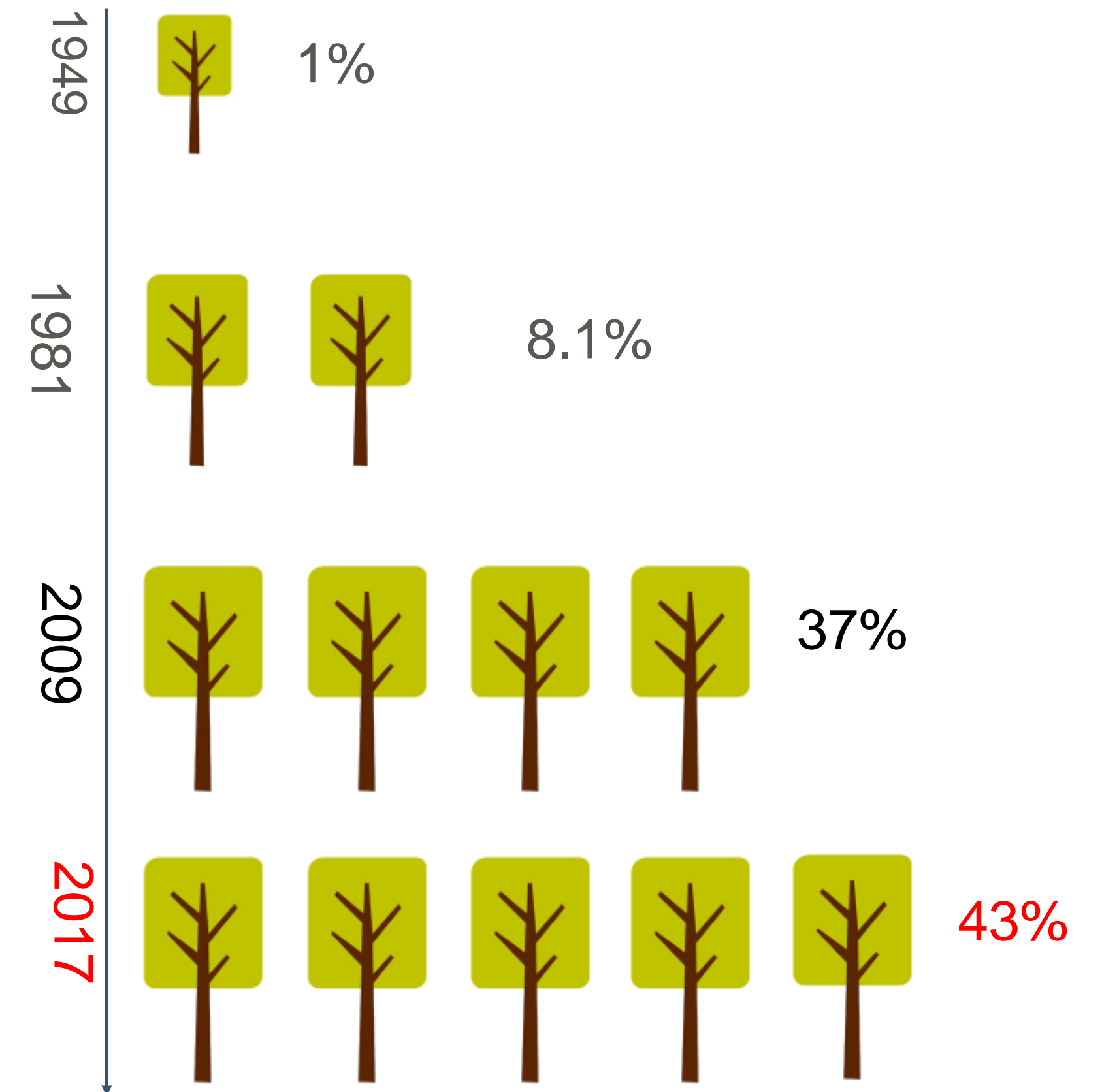


Administrative region of Beijing



Background

- Most people live in the plain area of Beijing.
- Forest coverage rate in plain was only 14.85% in 2011.
- The Plain Afforestation Project (2012-2014) increased nearly 10% of forest coverage in plain area.
- 54 million trees, belonging to 77 tree species and 99 shrub species
- Forest coverage rate in plain is 27.81% in 2017.



Forest coverage rate in Beijing

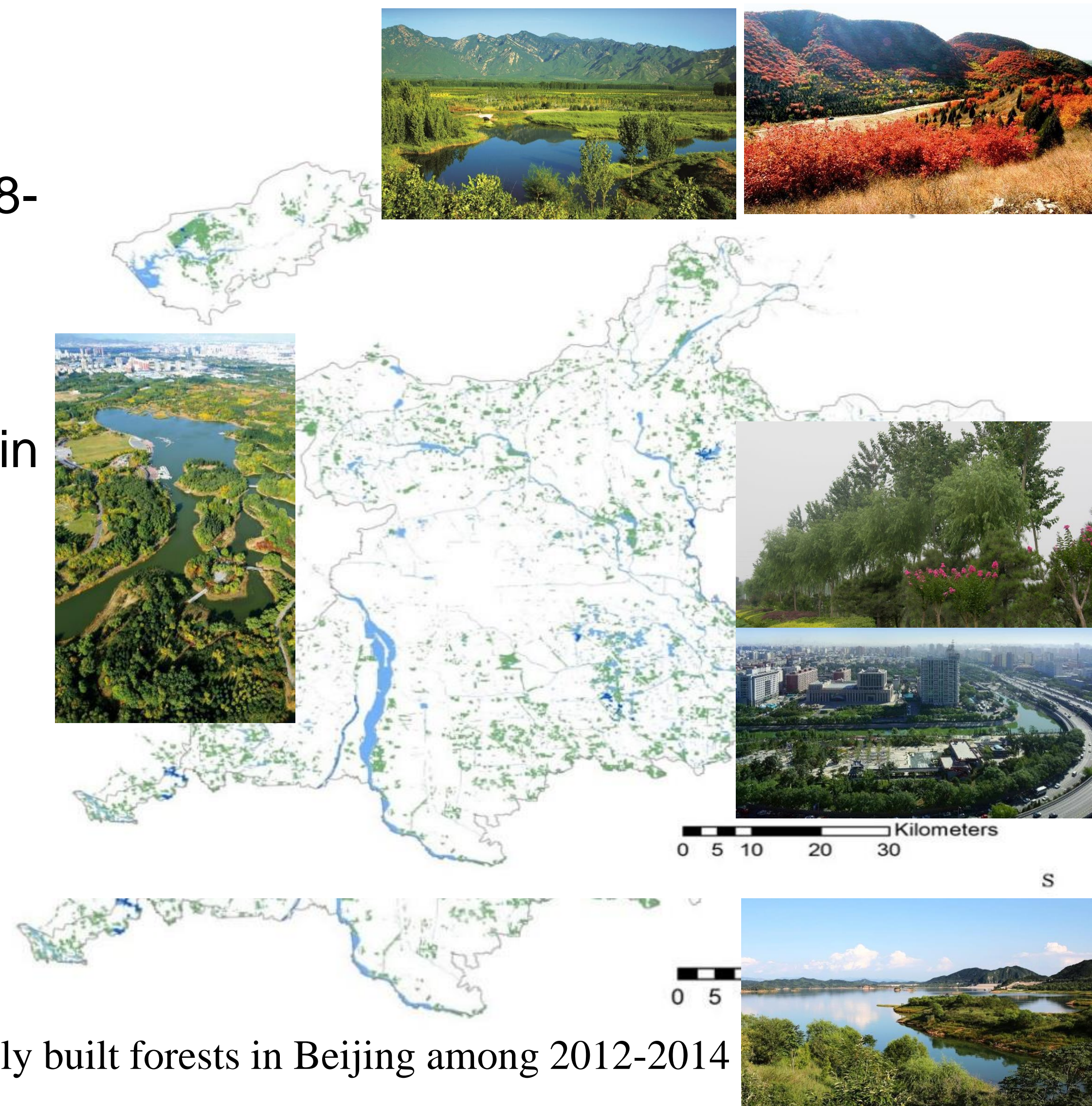
(Made by Cheng Wang)

The Plain Afforestation Project

(2012~2014, 1million mu= 67 thousand ha)

Background

- Another One Million Mu Afforestation Project in 2018-2020 (67 thousand ha) is being started, aiming at raising the forest cover rate to 45%.
- However, there is limited information about nursery in and around Beijing:
 - (1) the number of seedlings;
 - (2) the construction of seedling species;





Data and Method

- According to the implementation rules, the distance of nursery offerings from Beijing should be less than 600 km.
- We investigated tree species in nurseries from four provinces within this distance. They are **Hebei**, **Shandong**, **Shanxi** and **Liaoning** provinces.

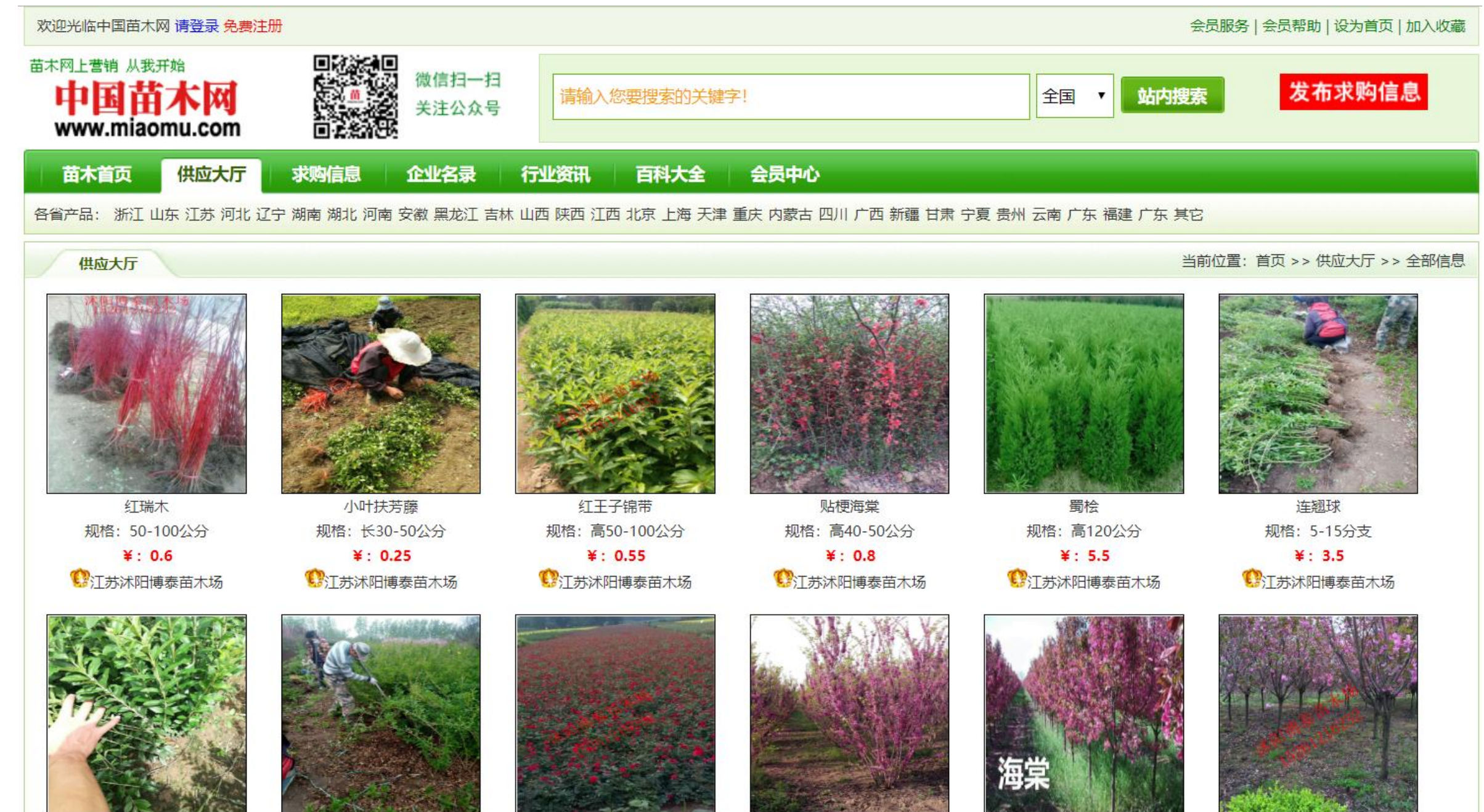


Nursery offerings for Beijing afforestation



Data and Method

- Data was obtained from tree selling advertisements on a website (<http://www.miaomu.com>).
- This website was built in 2000 and is the largest platform for selling seedlings in China.
- Tree species, growth traits, price and nursery names were recorded from advertisements in 2018.
- Until now, we collected tree species data from 285 nurseries belonging to companies and farmers.



Major Results

- There were 165 tree species.
- However, only several species were mostly grown such as *Sophora japonica*, *Fraxinus chinensis* and *Platanus orientalis*.
- There many native species of local plant community are not grown in nurseries.

Groups	Afforestation 2012-2014	Nursery offerings
Woody species	159	120
Tree species	107	65
Shrub species	52	55
Families	37	29
Genera	79	53

Tree species	Ratio	Shrub species	Ratio
<i>Pinus tabuliformis</i>	15.6	<i>Jasminum nudiflorum</i>	37.44
<i>Sophora japonica</i>	7.06	<i>Rosa chinensis</i> Jacq.	11.09
<i>Ginkgo biloba</i>	7.06	<i>Rhododendron farrerae</i>	7.86
<i>Robinia pseudoacacia</i>	6.48	<i>Amygdalus triloba</i>	5.79
<i>Fraxinus chinensis</i> Roxburgh	5.3	<i>Buxus sinica</i> (Rehd. et Wils.) Cheng	4.24
<i>Salix matsudana</i>	4.83	<i>Amorpha fruticosa</i> Linn.	3.34
<i>Prunus cerasifera</i> 'Pissardii'	4.33	<i>Lonicera maackii</i> (Rupr.) Maxim.	3.23
<i>Ulmus pumila</i> cv. jinye	4.02	<i>Buxus bodinieri</i> Levl.	2.93
<i>Populus tomentosa</i>	3.97	<i>Sorbaria sorbifolia</i>	2.63
<i>Koelreuteria paniculata</i>	3.42	<i>Syringa oblata</i> Lindl.	2.34



**World Forum on
Urban Forests**
Mantova 2018

**Thanks for your attention!
Welcome to China!**

Adder: Xiangshang Road, Haidian District, Beijing, China

100091

Tel: 86-010-6288 0719

Email: zksun_caf@caf.ac.cn