



World Forum on
Urban Forests
Mantova 2018

PS_5.2: *Changing Spaces and Places*
Ludwig - Panunzi

Seismic Green Infrastructure: EKSOTECTURES & EKSOSCAPES

Ferdinand Ludwig, Stefano Panunzi

Technical University of Munich (TUM - DE) – University of Molise (UNIMOL - IT)

Technische
Universität
München



UNIVERSITÀ
DEGLI STUDI
DEL MOLISE





Seismic Risks in Italy



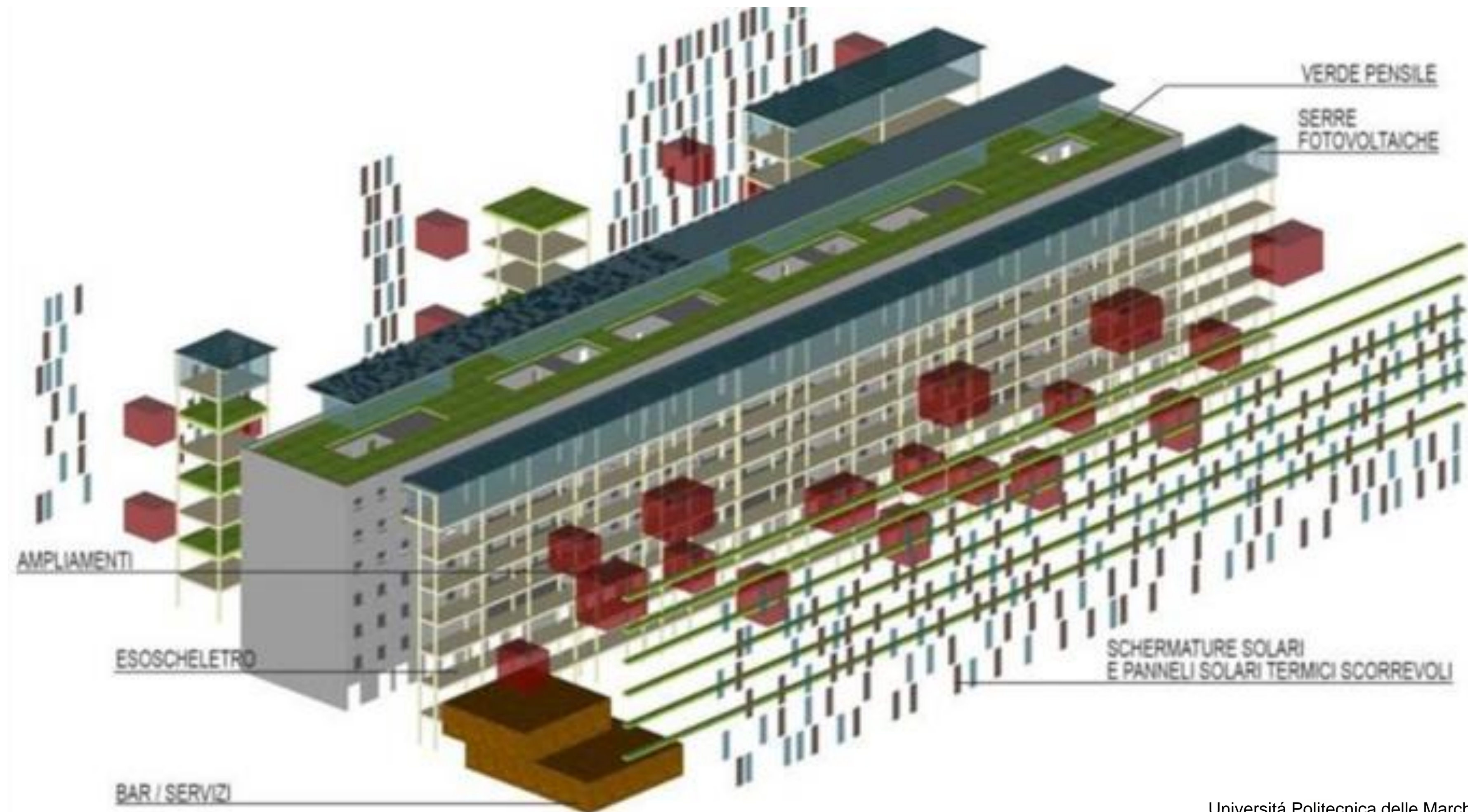


EKSOSKELETON – monofunctional, purely structural solutions





EKSOTECTURE – multifunctional integration





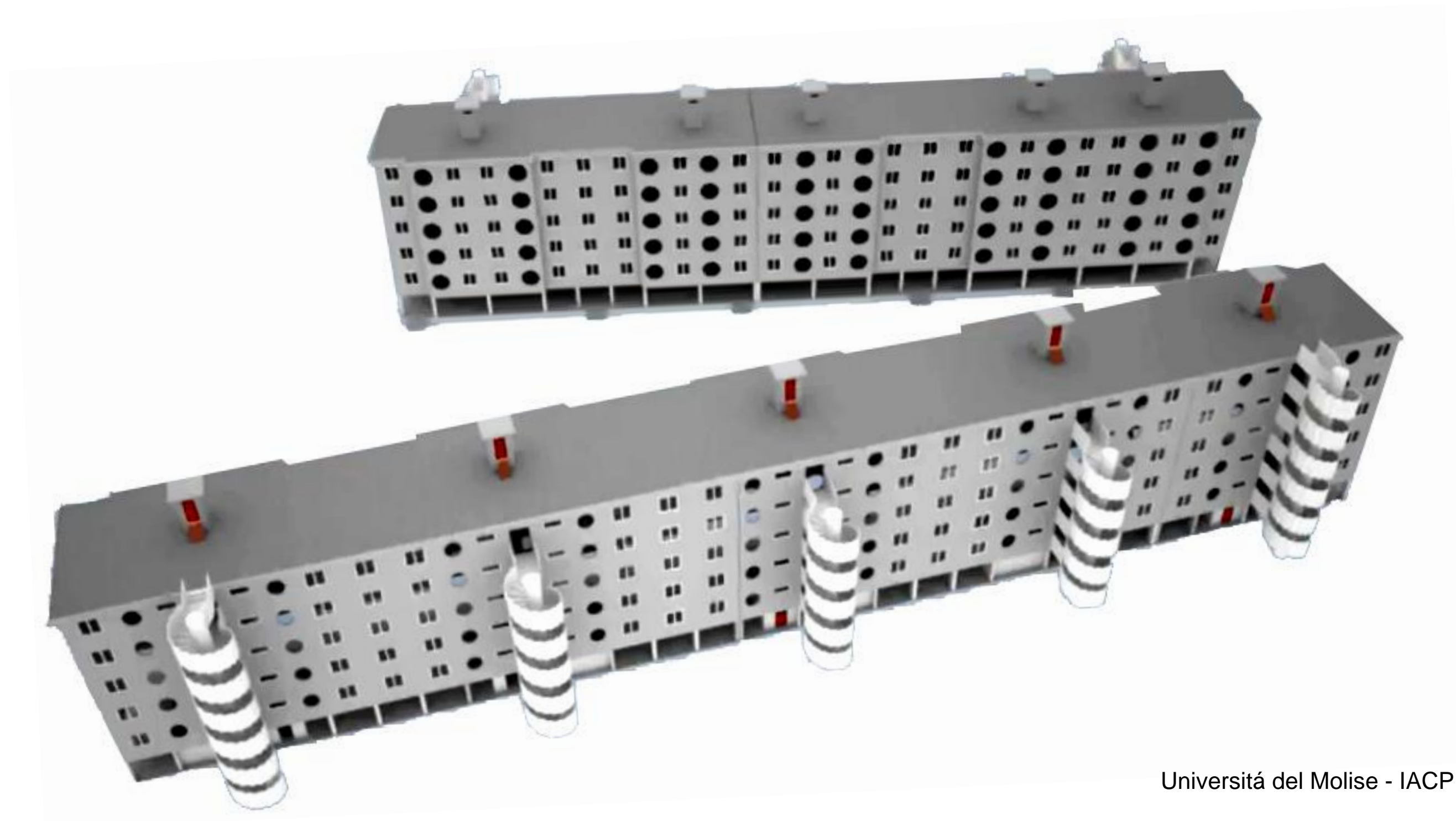
EKSOTECTURE – multifunctional integration



SuRE-FIT – european consortium



EKSOTECTURE – multifunctional integration



Università del Molise - IACP



**World Forum on
Urban Forests**
Mantova 2018

EKSOTECTURE – multifunctional integration



Università del Molise - IACP



**World Forum on
Urban Forests**
Mantova 2018

Baubotanik – Green EKSOTECTURE



Source: <http://www.ingegneriarchitettiparma.it>



**World Forum on
Urban Forests**
Mantova 2018

Baubotanik – Green EKSOTECTURE





**World Forum on
Urban Forests**
Mantova 2018



Source: <http://www.ingegneriarchitettiparma.it>



Plane Tree Cub, Ludwig.schöfle, 2012



Plane Tree Cub, Ludwig.schöfle, 2012



**World Forum on
Urban Forests**
Mantova 2018

Plane Tree Cube in Nagold, Germany
Iudwig.schönle 2012

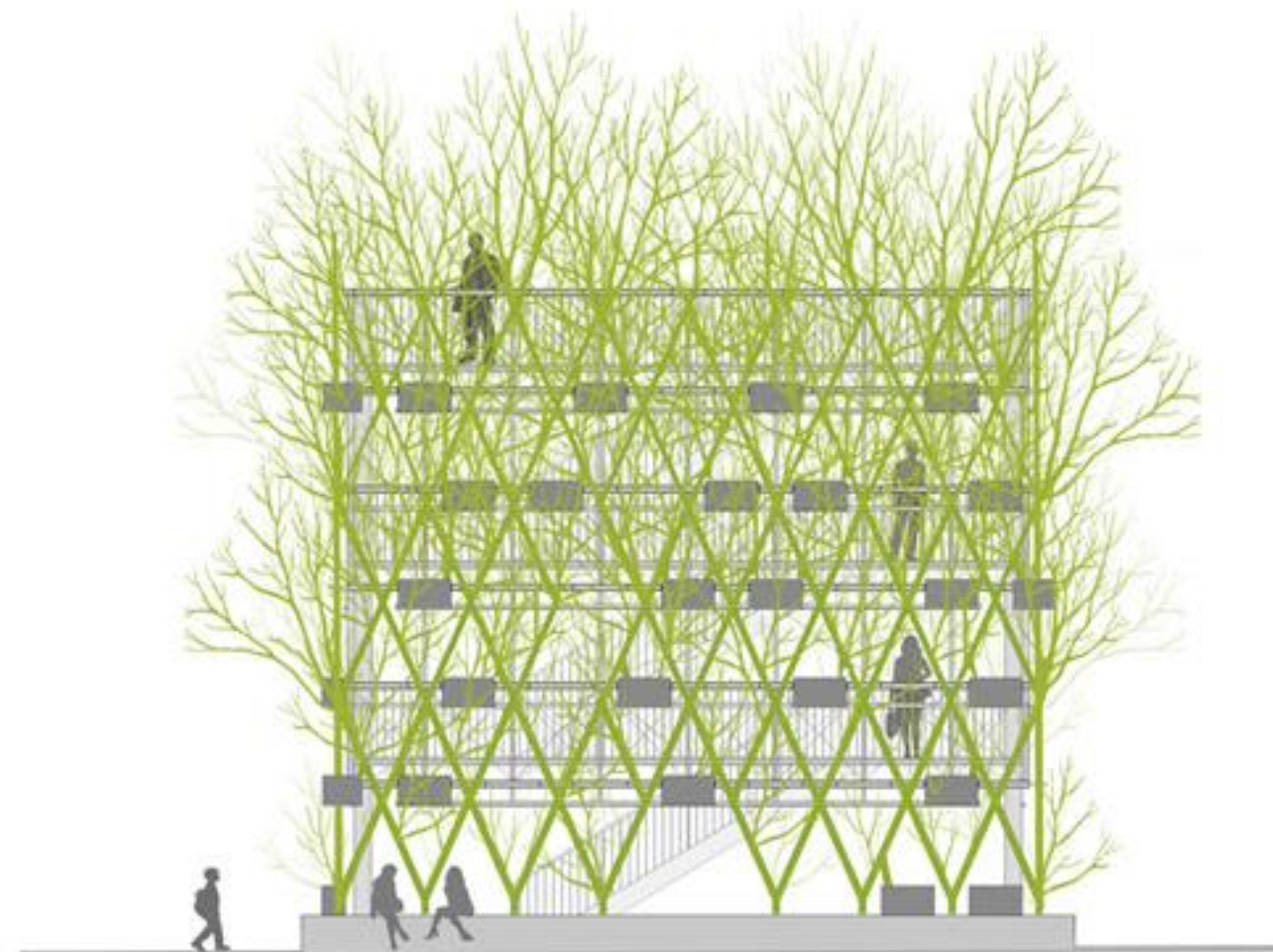


2012



**World Forum on
Urban Forests**
Mantova 2018

Plane Tree Cube in Nagold, Germany
Iudwig.schönle 2012



2018



**World Forum on
Urban Forests**
Mantova 2018

Plane Tree Cube in Nagold, Germany
ludwig.schoenle 2012



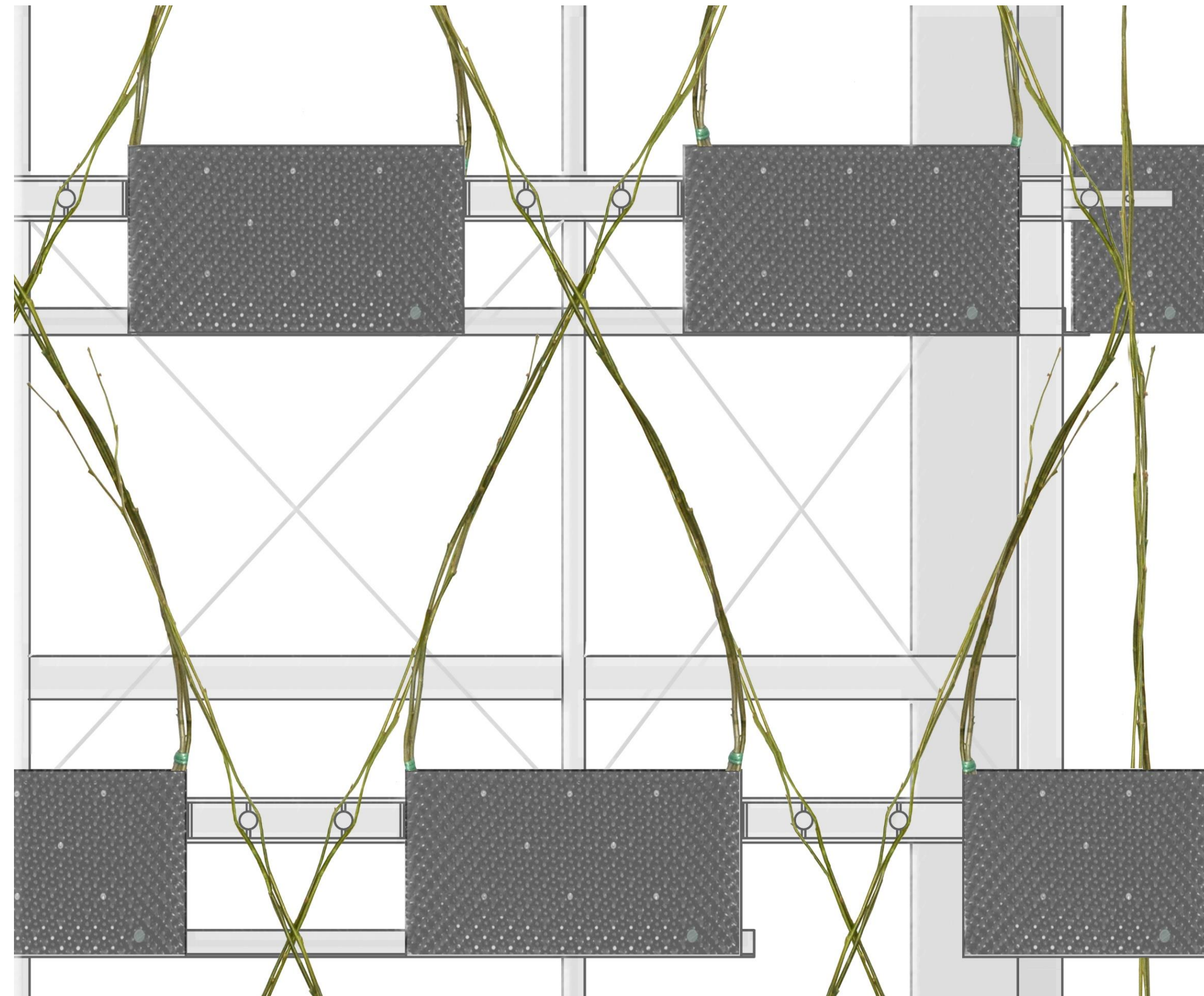
2028

© Ludwig.Schoenle

Ferdinand Ludwig
Technical University of Munich (TUM - DE)



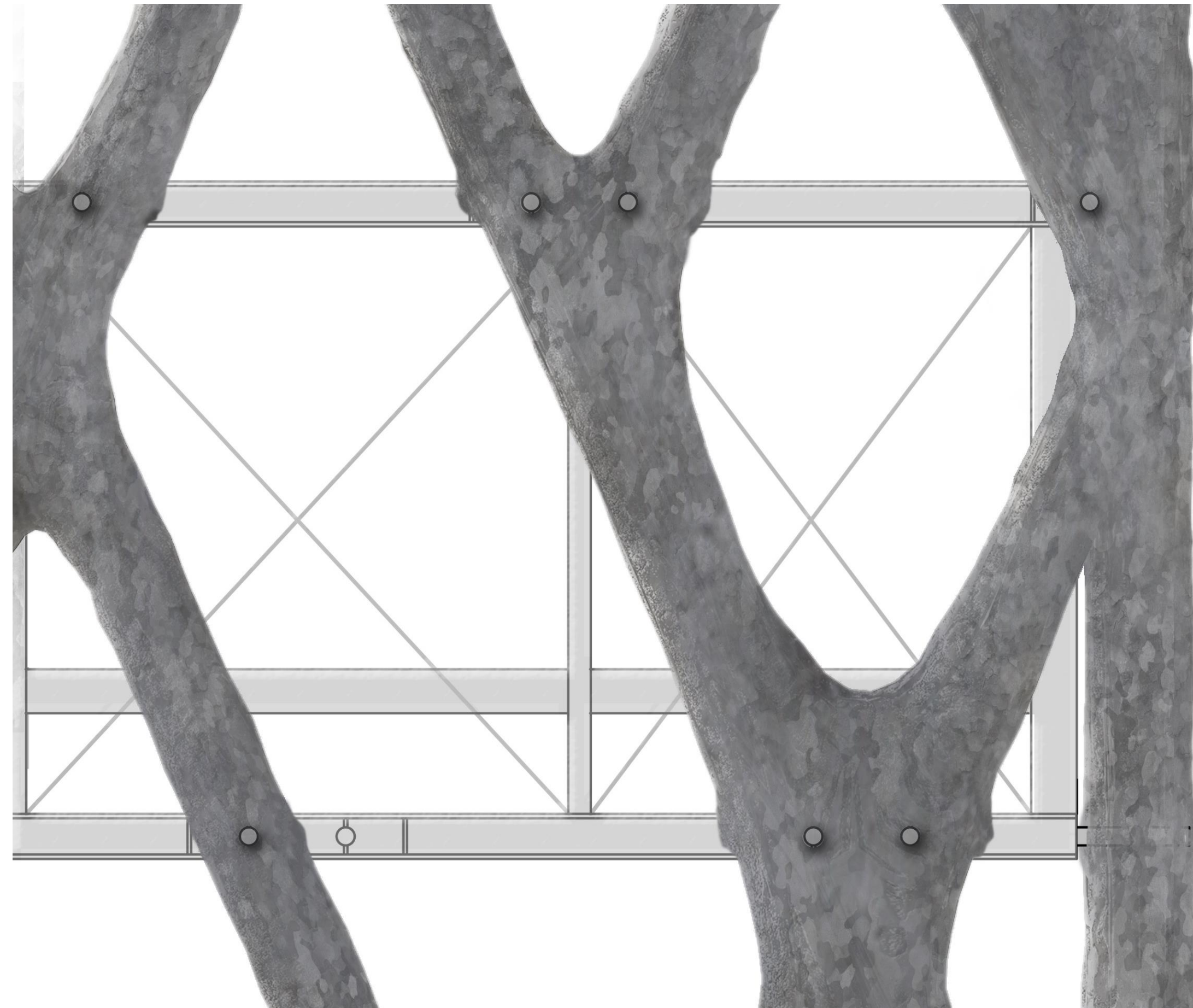
Plane Tree Cube in Nagold, Germany
ludwig.schönle 2012





**World Forum on
Urban Forests**
Mantova 2018

Plane Tree Cube in Nagold, Germany
ludwig.schönle 2012





**World Forum on
Urban Forests**
Mantova 2018

Plane Tree Cube in Nagold, Germany
Iudwig.schönle 2012



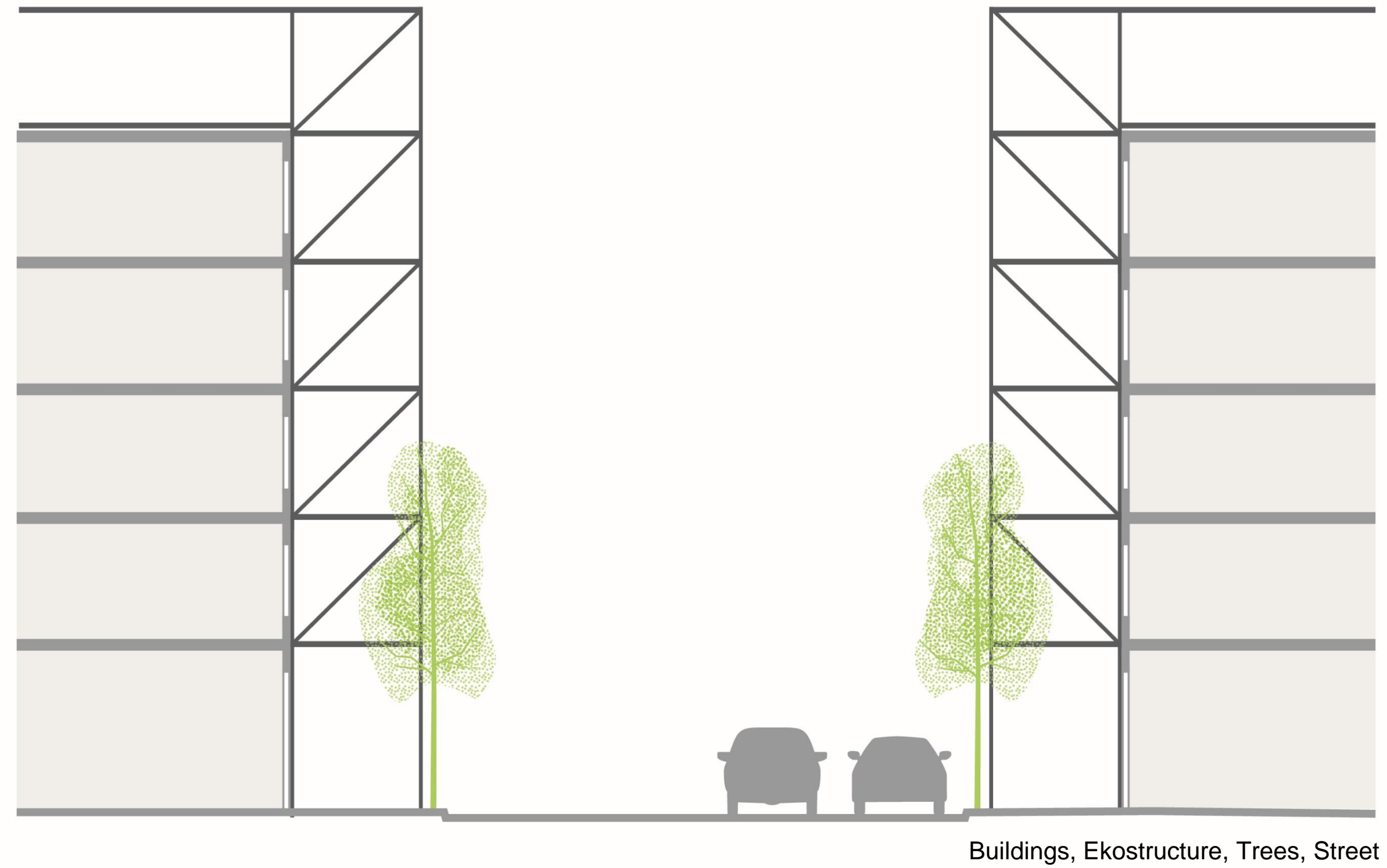


From EKOSTECTURE to EKSOSCAPES



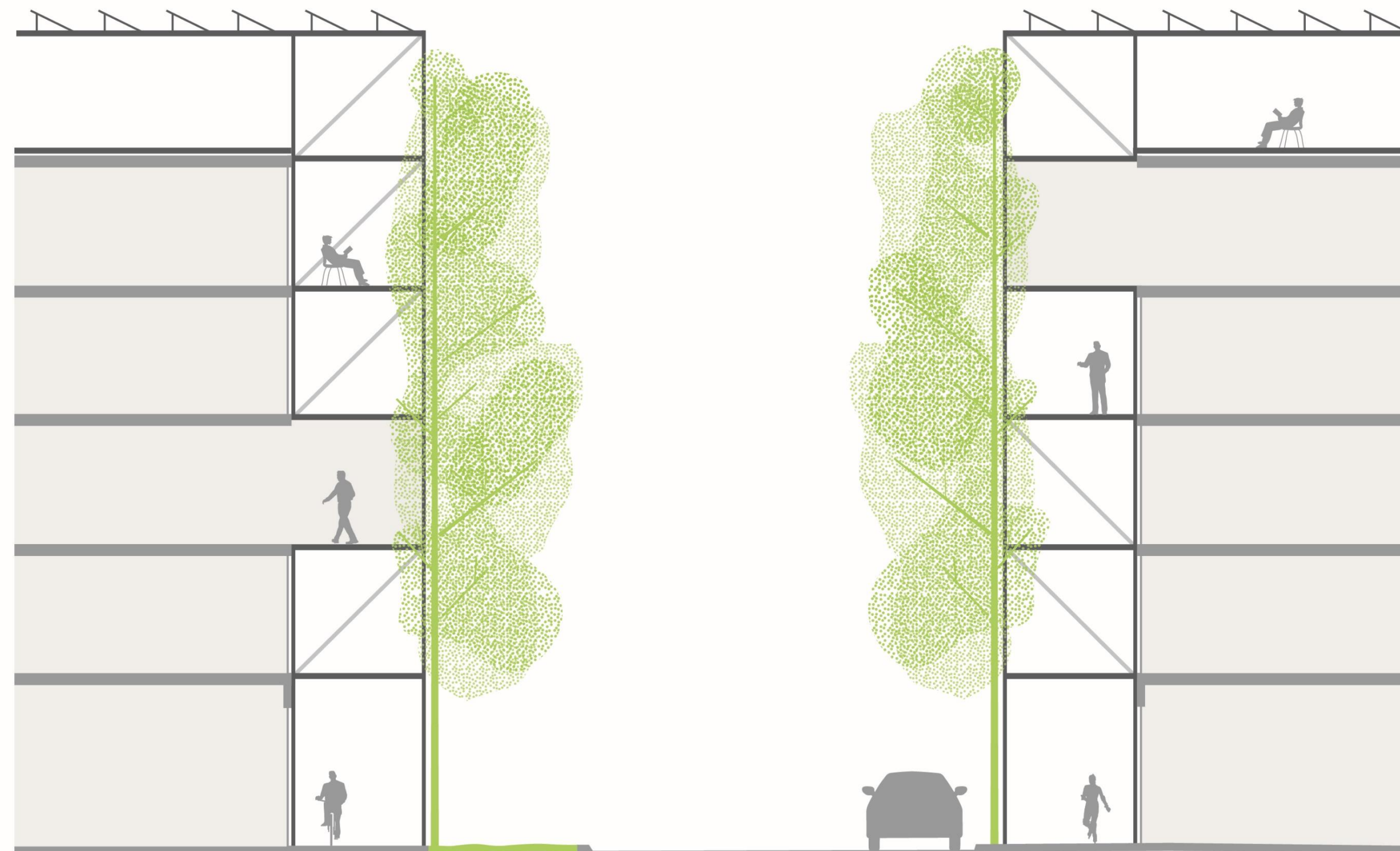


From EKOSTECTURE to EKSOSCAPES





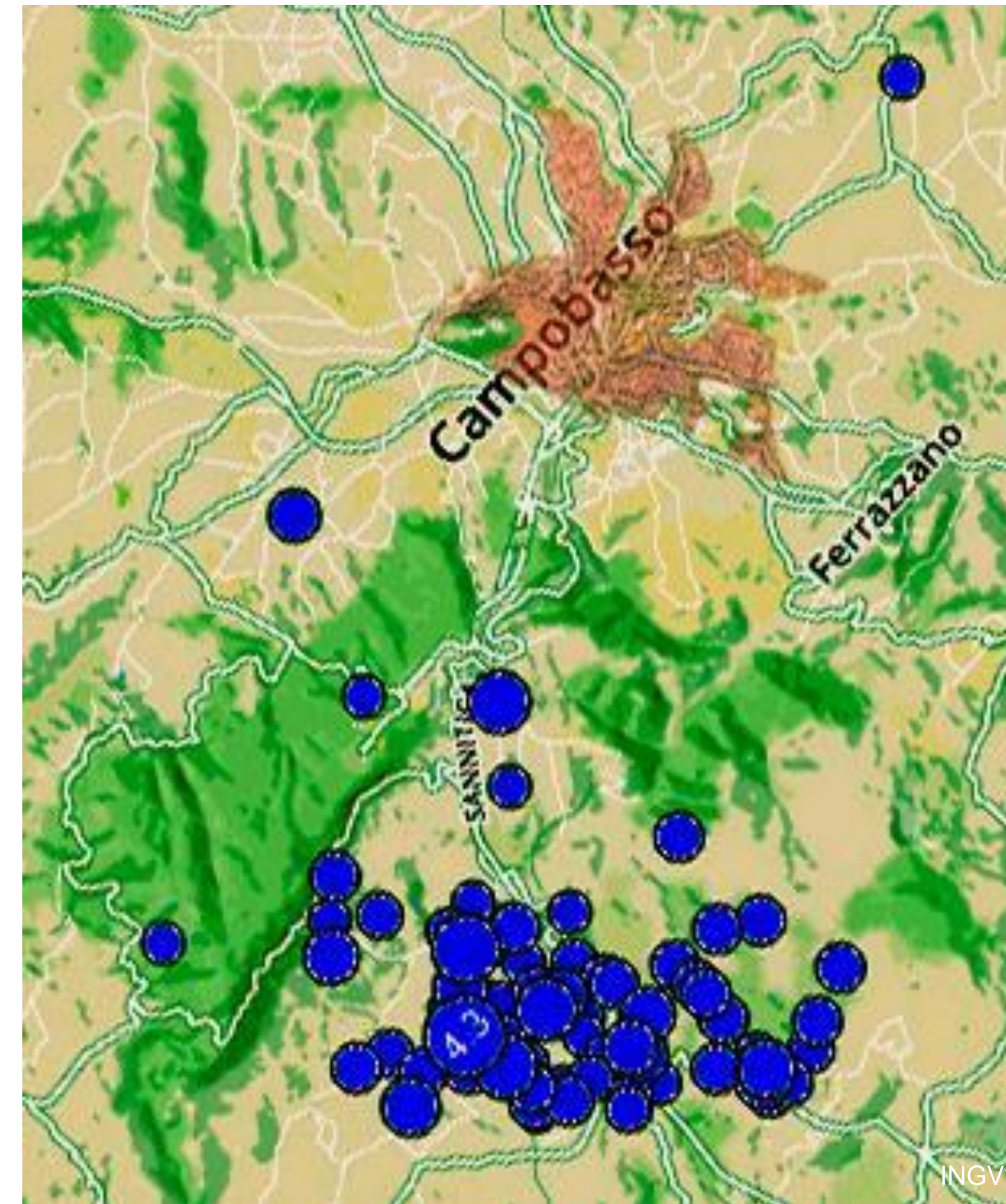
From EKOSTECTURE to EKSOSCAPES



Buildings, Ekostecture, Baubotanik, Street

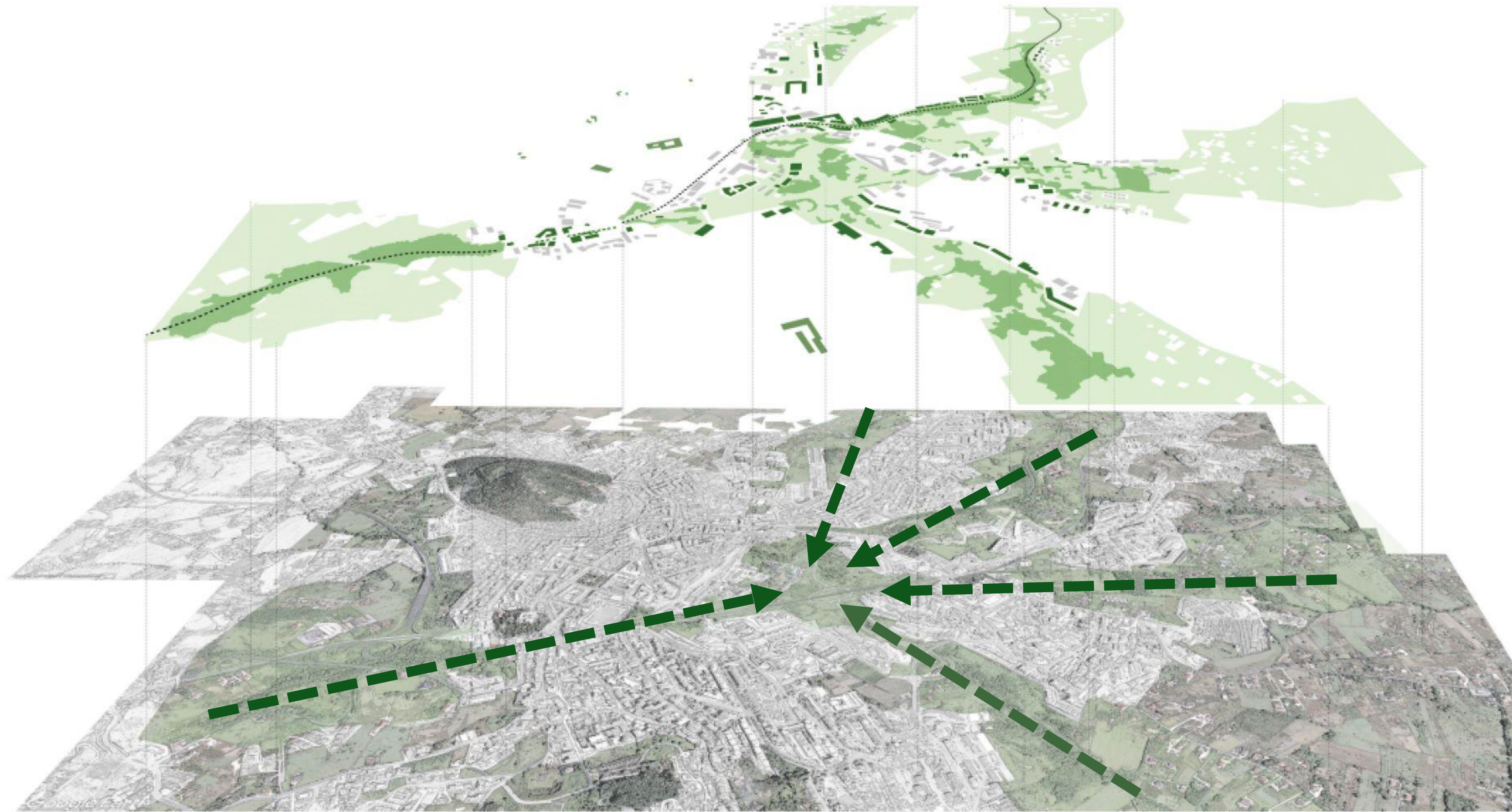


Case Study Campobasso – The Maple Leaf City





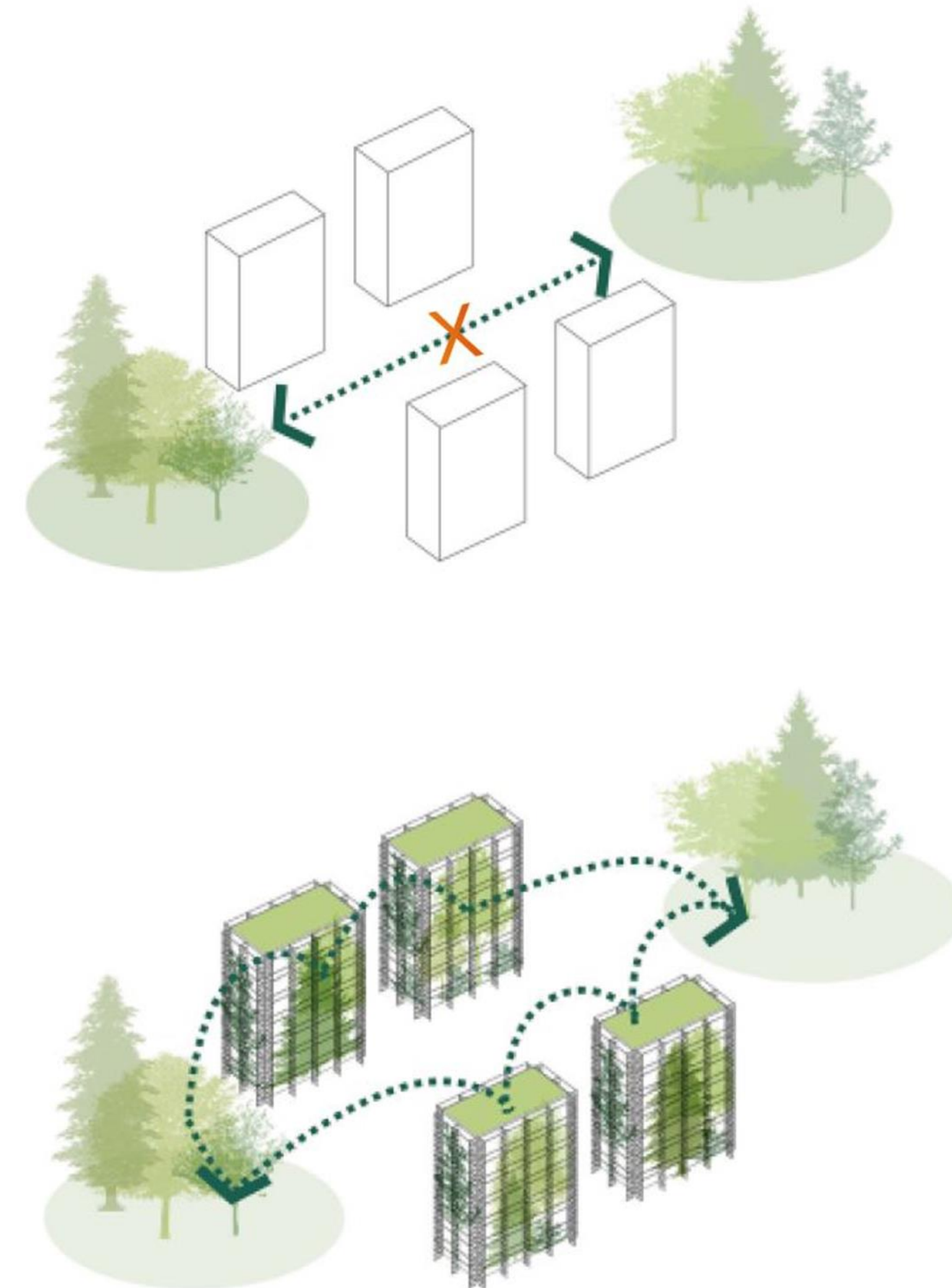
EKOSCAPES – Seismic green Infrastructure (TUM – UNIMOL)



Green Veins for Campobasso - Zhenting Zheng, Junyue Deng



EKOSCAPES – Seismic green Infrastructure (TUM – UNIMOL)



Green Veins for Campobasso - Zhenting Zheng, Junyue Deng



World Forum on
Urban Forests
Mantova 2018

PS_5.2: *Changing Spaces and Places*
Ludwig - Panunzi

THANK YOU

Ferdinand Ludwig, Stefano Panunzi

Technical University of Munich (TUM - DE) – University of Molise (UNIMOL - IT)

Technische
Universität
München



UNIVERSITÀ
DEGLI STUDI
DEL MOLISE

