



**World Forum on
Urban Forests**
Mantova 2018

Modelling the Effect of Tree Planting on Mitigating Heat Exposure for Vulnerable Population in Australian Cities

By Chayn Sun, Marco Amati, Bryan Boruff, Joe Hurley

29th Nov 2018

Outline

- Aim and Objectives

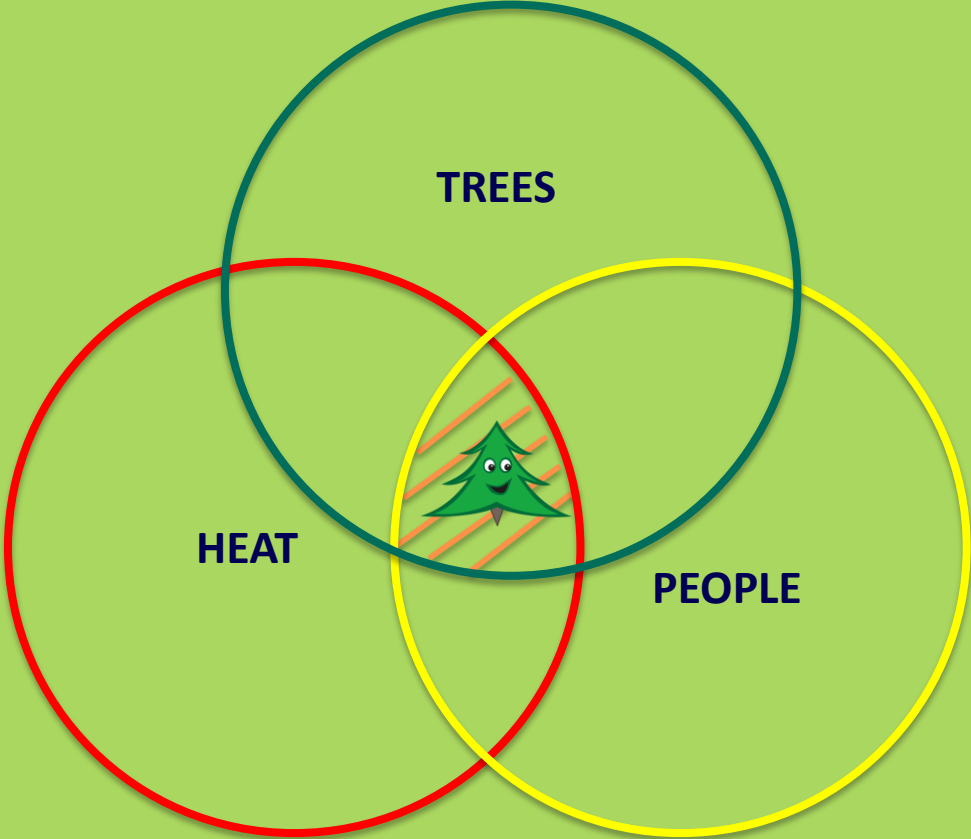
- Methods

- Study area
- Data
- Analysis and modelling

- Results

- Other ongoing urban forest related work

Aim and Objectives



Aim and Objectives

- Investigate the associations between land surface temperature (LST), tree canopy cover and community population profiles using satellite-derived temperature and census data in Sydney, Australia.
- Identify the spatial variations of heat exposure for vulnerable population.
- Prioritise the community areas for tree planting.
- Modelling the effects of tree planting on heat.



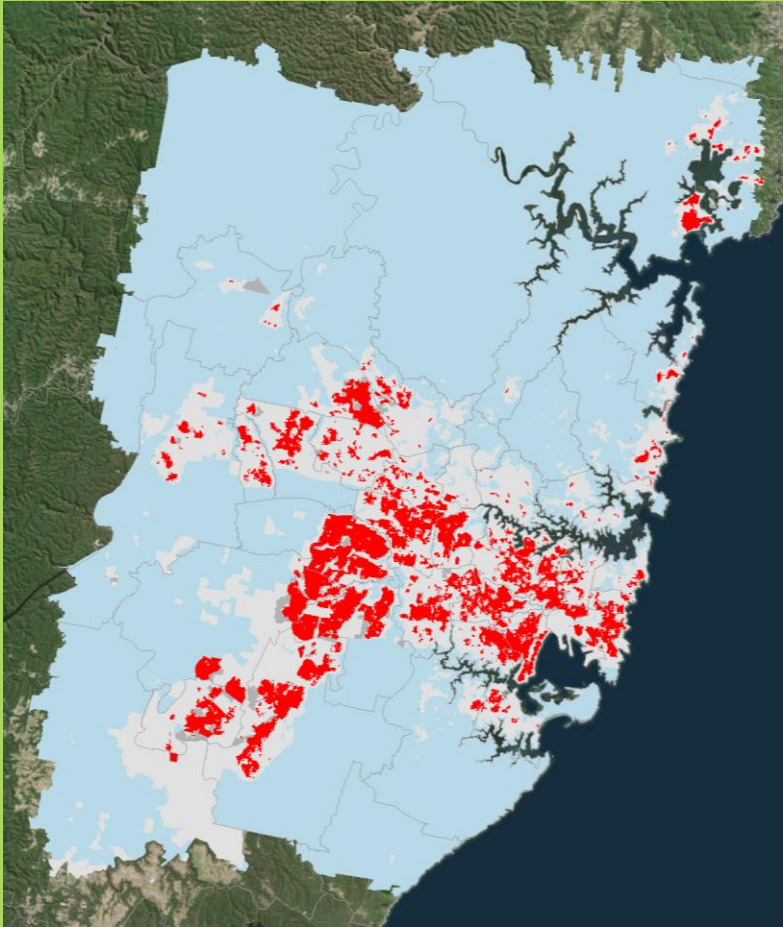
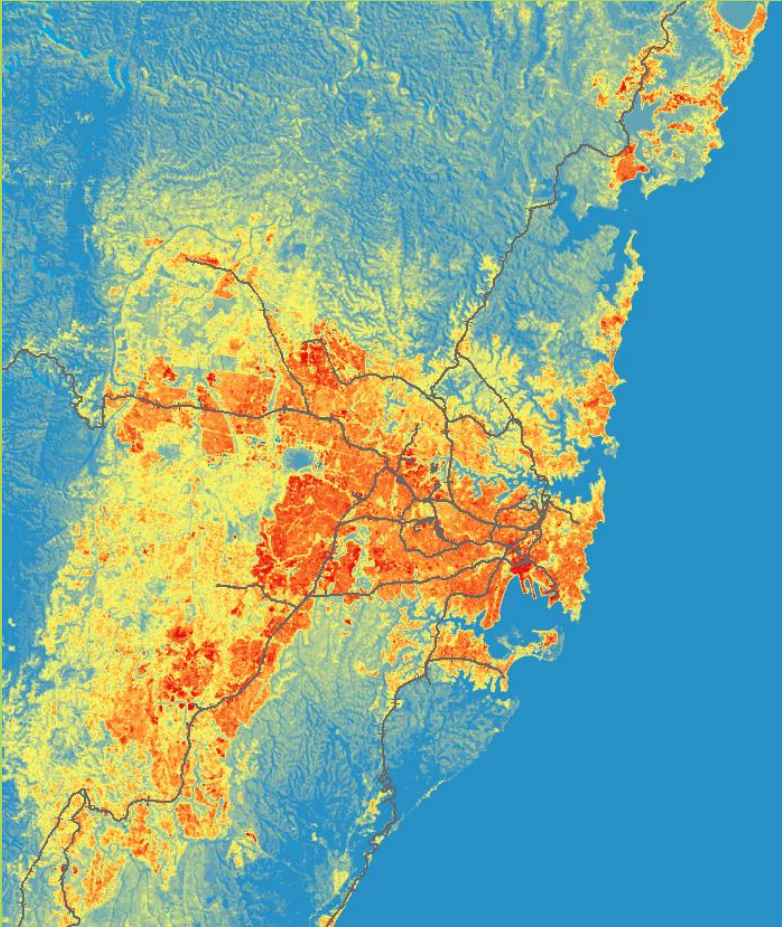
Methods: Data

- Land surface temperature (LST) and Urban Heat Island: derived from 2016 landsat-8, 30m
- Urban vegetation types and distribution: derived from 2016 aerial photograph, 20cm
- 2016 Census data of Sydney metropolitan area



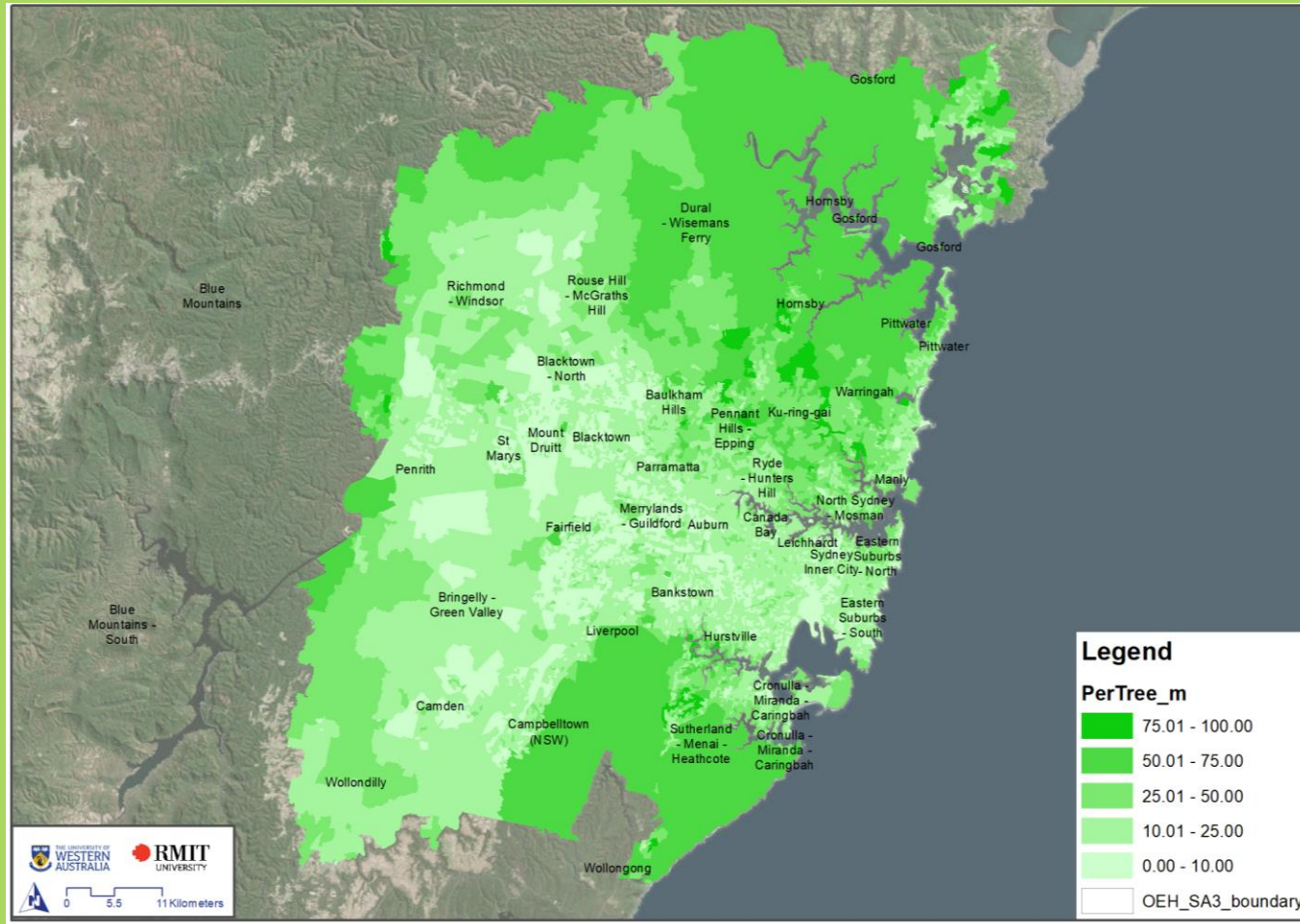
Methods: Data

LST and UHI



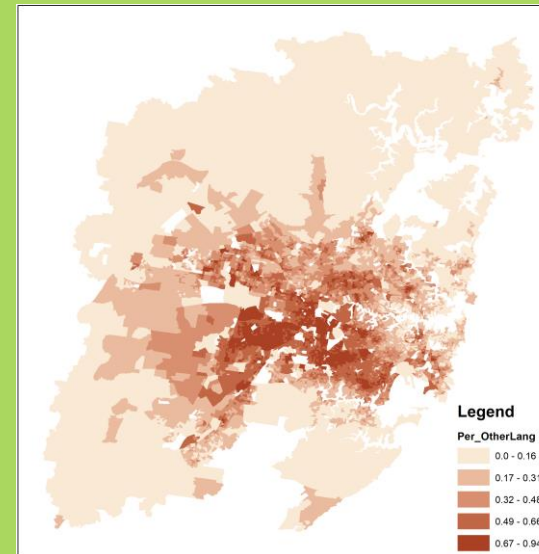
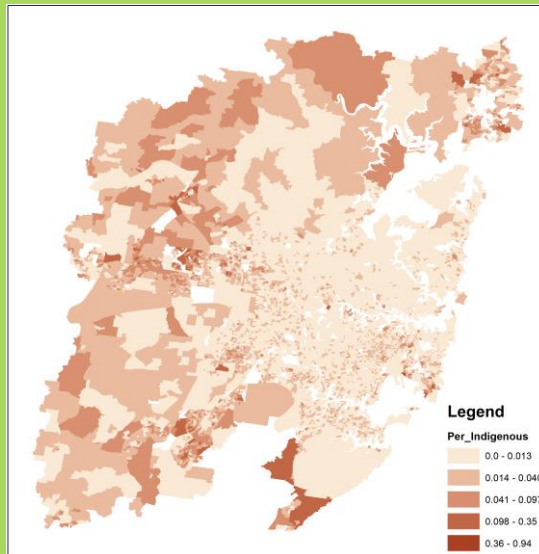
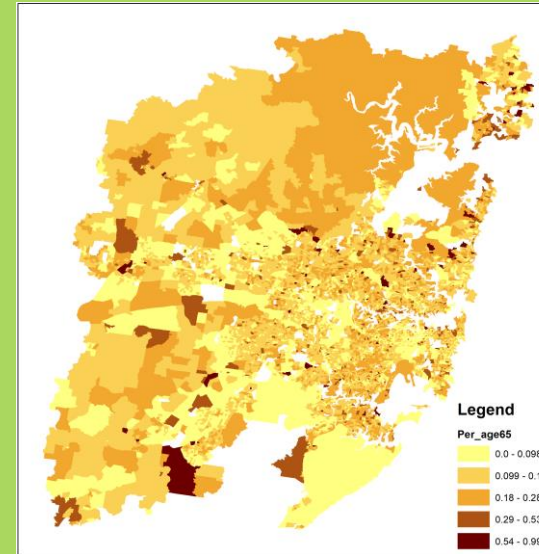
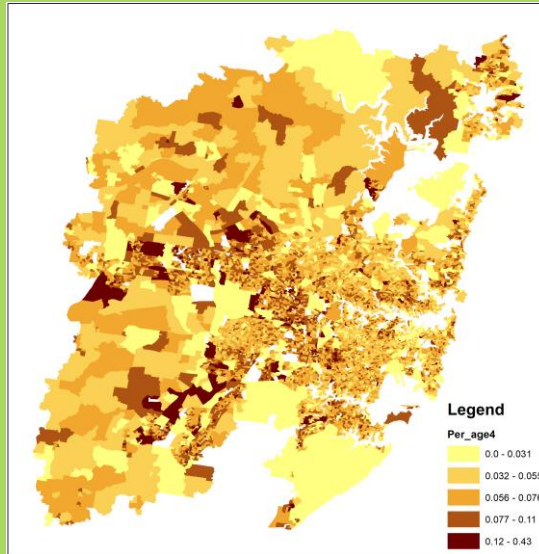
Methods: Data

Tree distribution

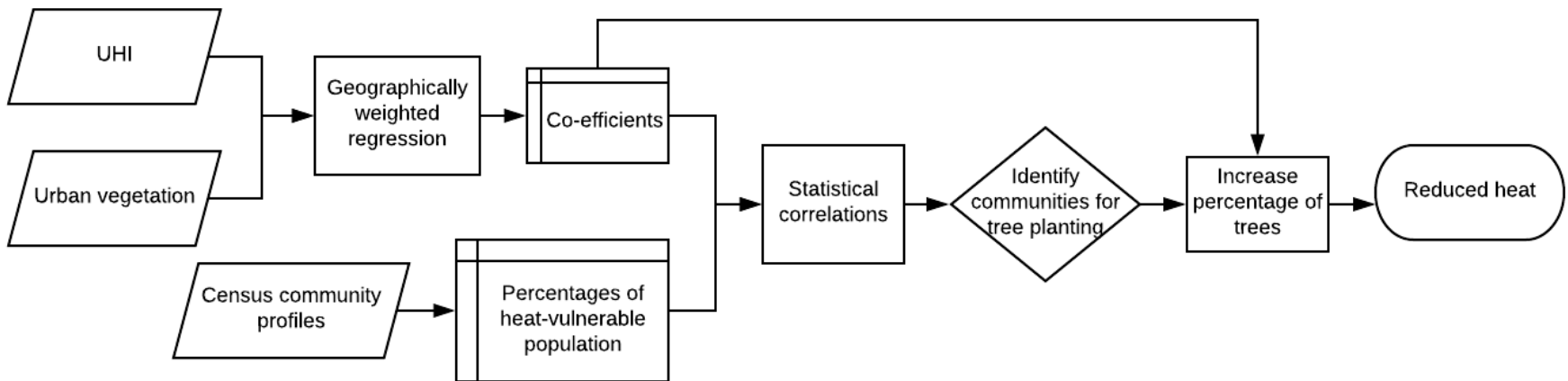


Methods: Data

Community profiles



Methods: Analysis and Modelling

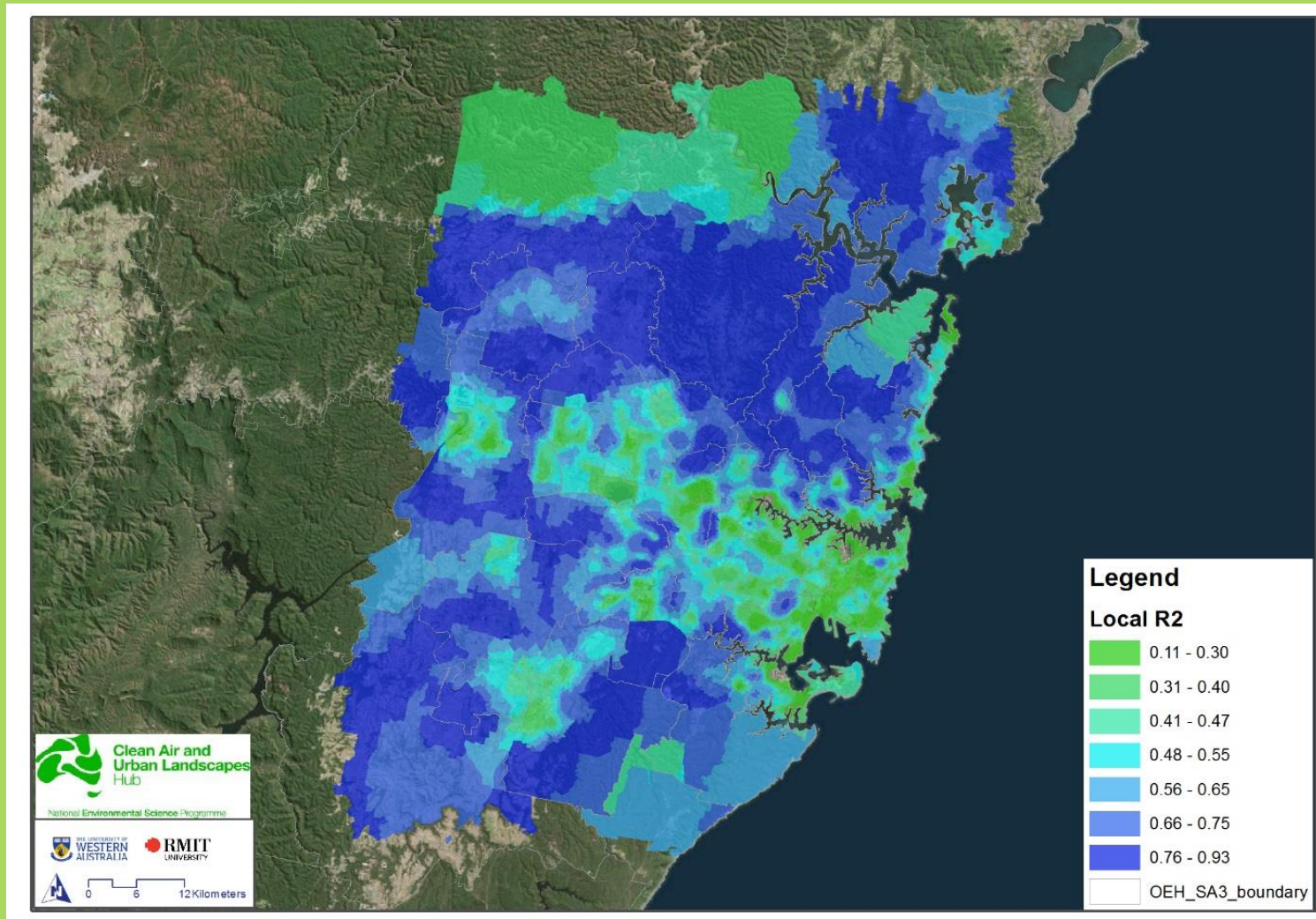


Results: GWR report

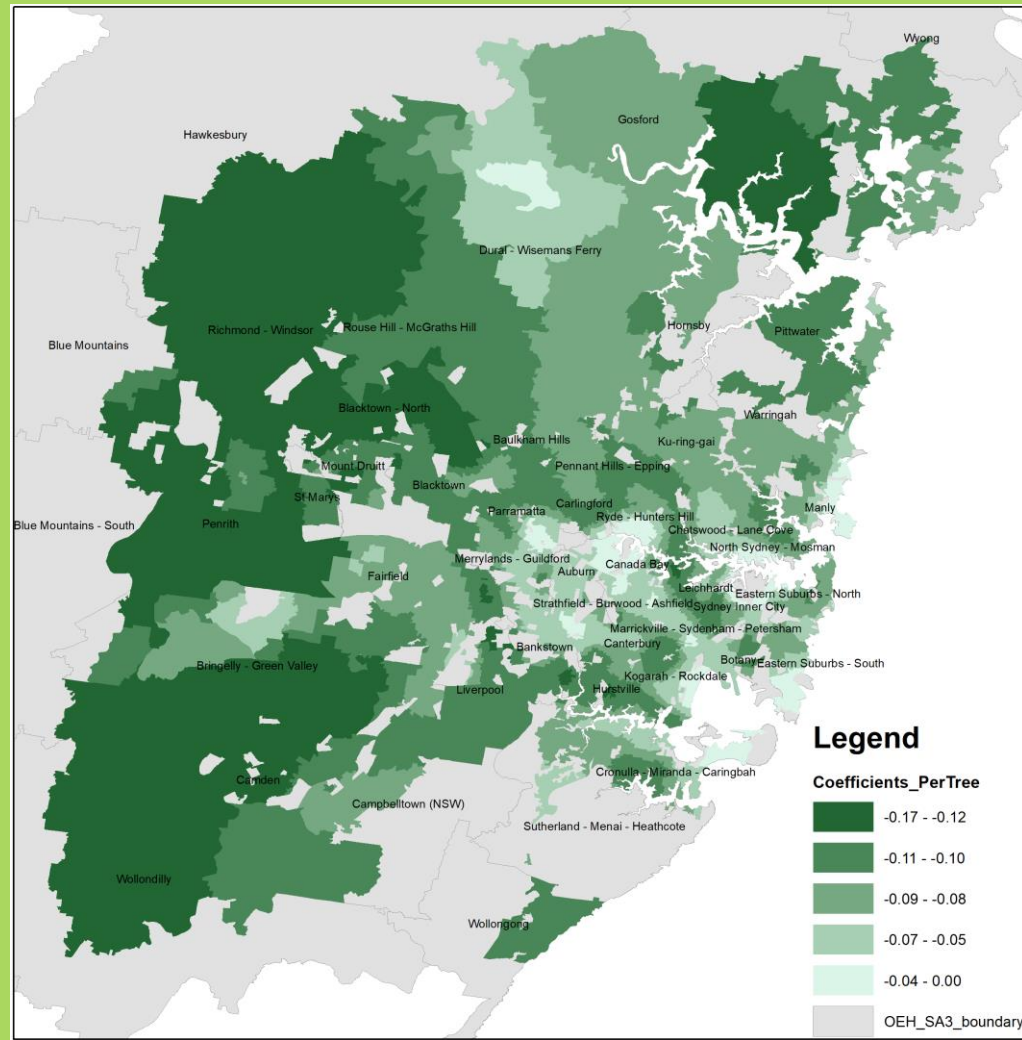
Neighbors	200	
ResidualSquares	3636.078414	
EffectiveNumber	868.170794	
Sigma	0.626061	
AICc	19768.549378	
R2	0.897999	
R2Adjusted	0.888464	
Dependent Field	0	UHI_MB_m
Explanatory Field	1	PerGrs_m
Explanatory Field	2	PerShrb_m
Explanatory Field	3	PerTree_m
Explanatory Field	4	PerRd_m



Results: GWR Local R2



Results: GWR coefficients of trees

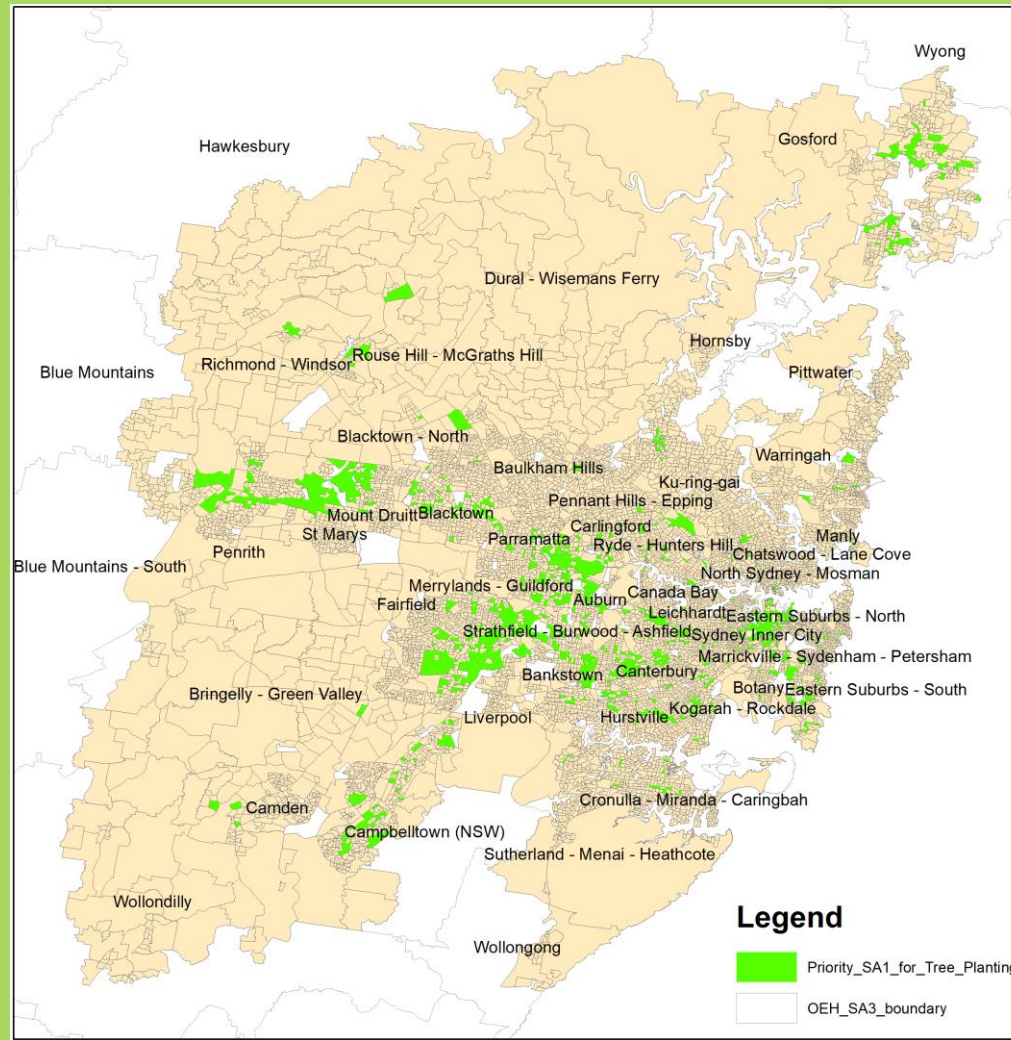


Results: Correlations between community profiles and tree-heat coefficients

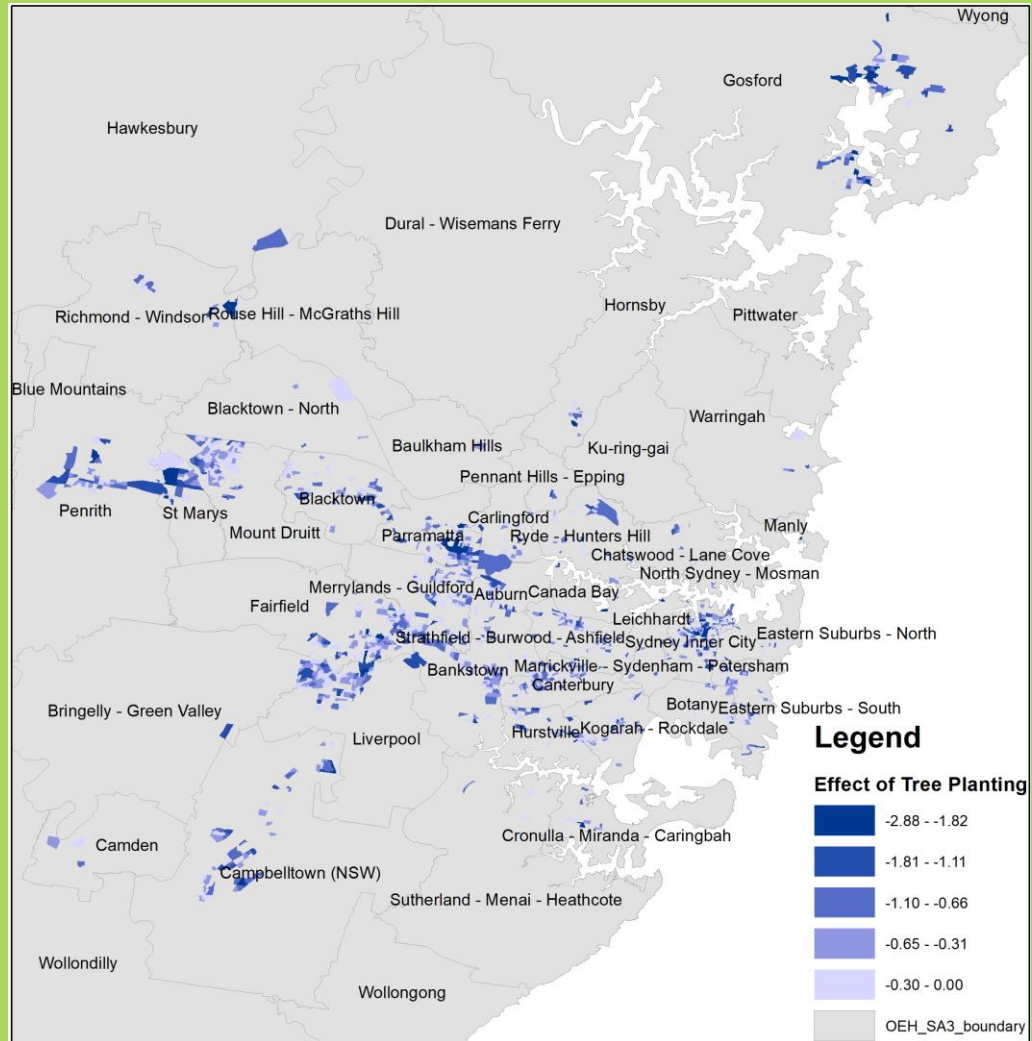
Per_age4	Per_age65	Income	Education	Per_Indigenous	Per_NonEng
-0.16	-0.03	-0.26	-0.29	-0.22	0.21



Results: Priority SA1s for tree planting



Results: Effects of tree planting on vulnerable populations



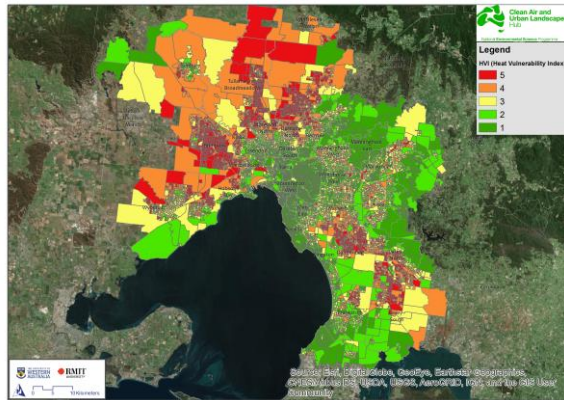


Coping with Climate Change – Indicators and Indices for mitigation and adaptation

Heat Vulnerability Index

Exposure + Sensitivity – Adaptability

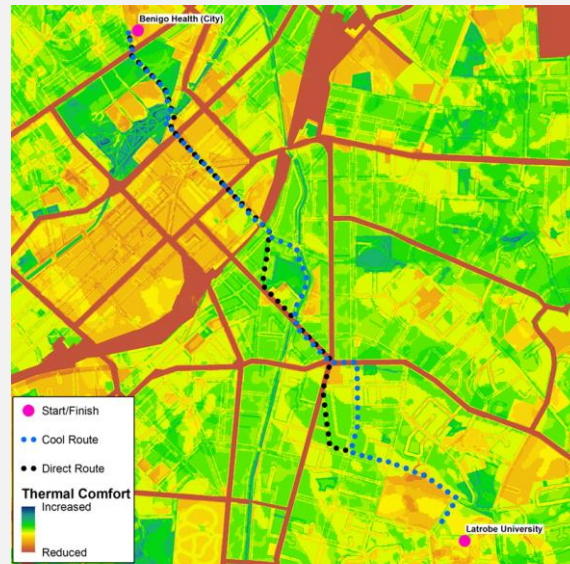
-> Identify areas where we



DELWP

Thermal Comfort Index

-> Finding cooler travel routes

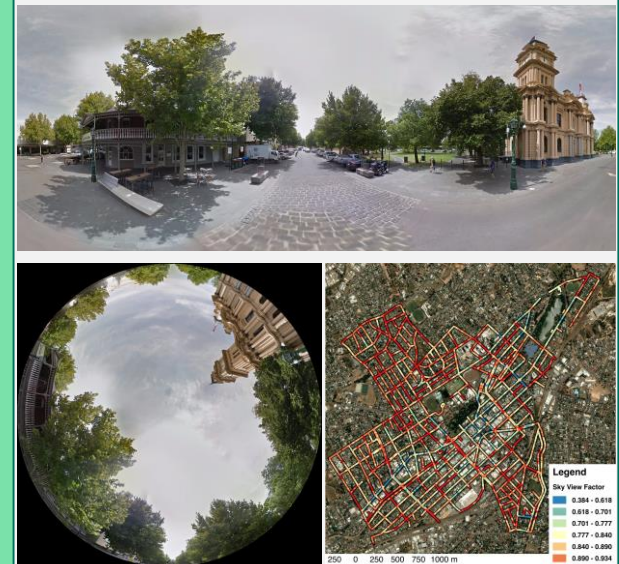


Smart Cities and Suburbs

<https://www.shadeways.net/>

Greenery view Index

-> Benchmarking for tree shade



City of Greater Bendigo

Thank you!



**World Forum on
Urban Forests**
Mantova 2018