

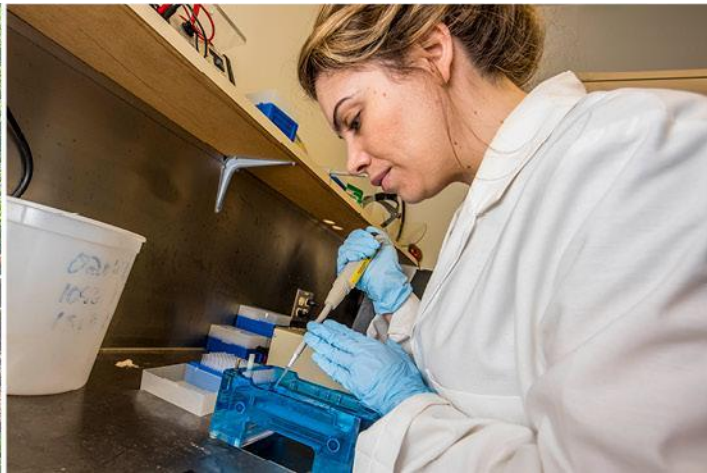


Professional Botanical Gardens and Urban Forestry

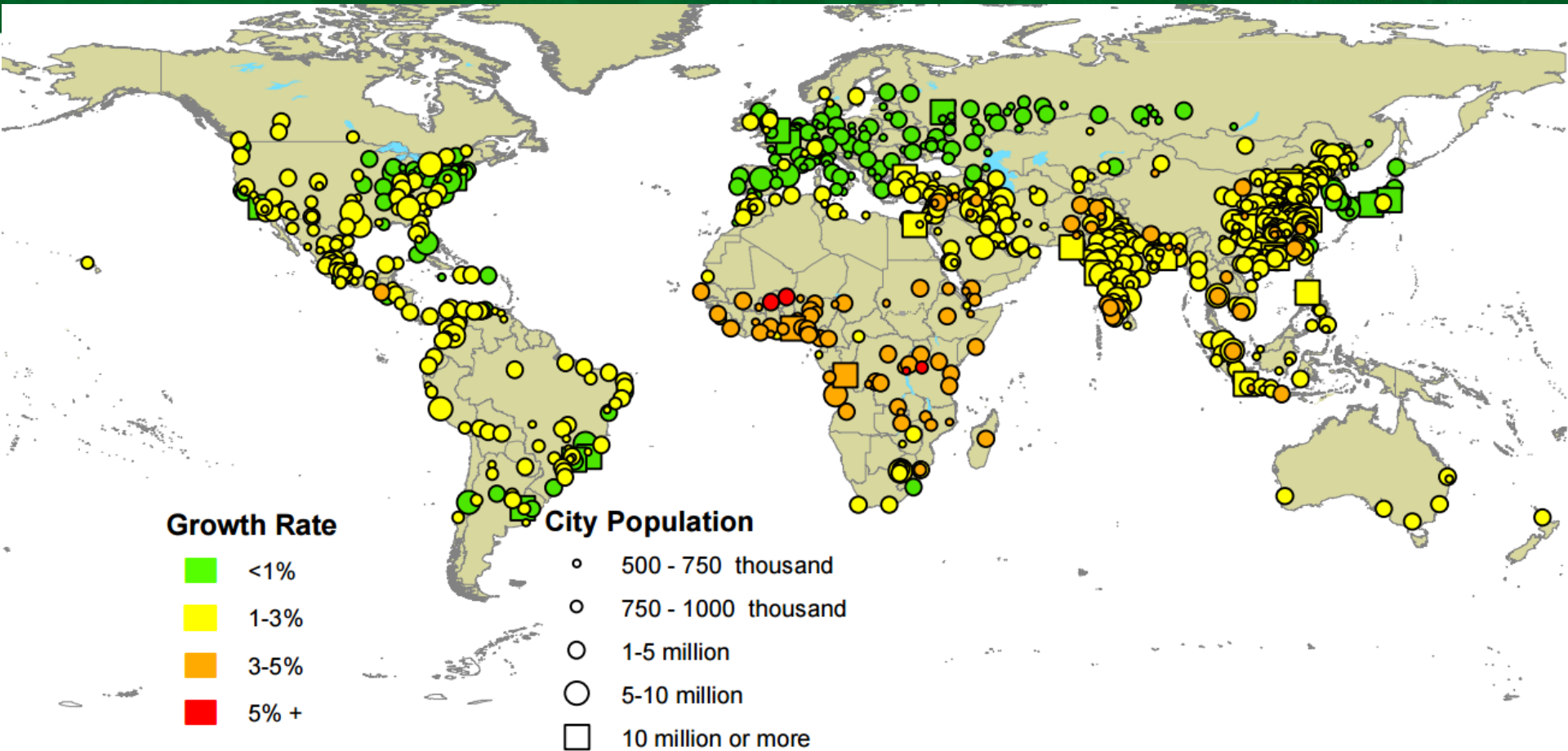
Nicole Cavender VP Science and Conservation

Lydia Scott Director, Chicago Region Trees Initiative

Gerard Donnelly CEO & President



The Need for Urban Forestry is Growing

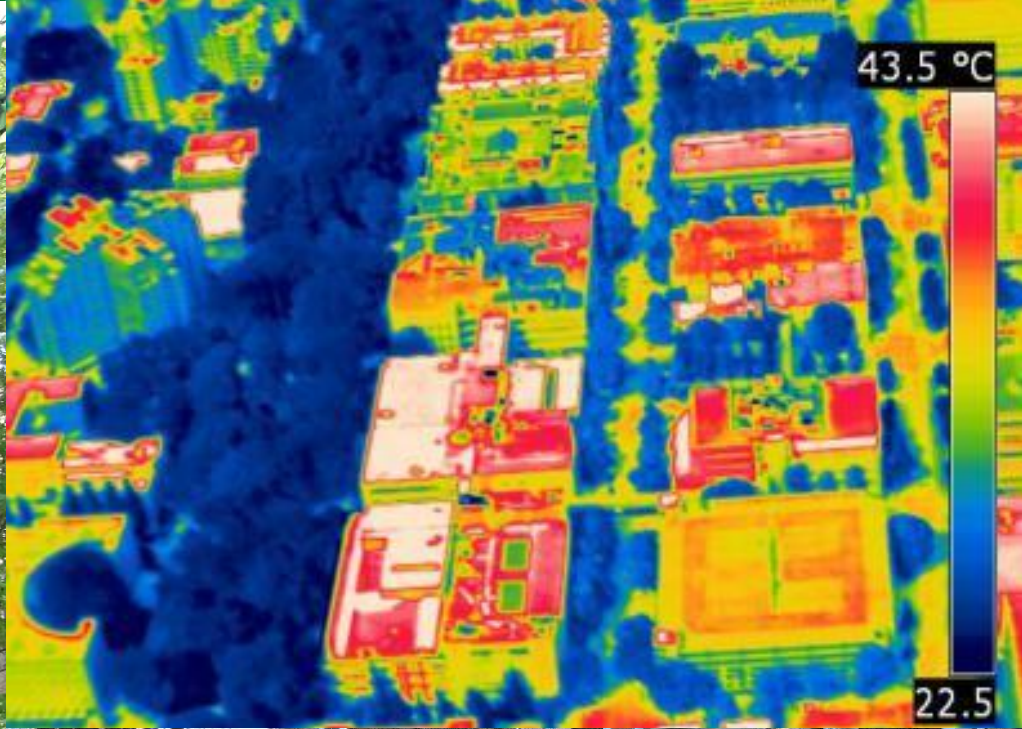


By 2050, 66% of the world's population is projected to be urban (UN 2014)

THE URBAN FOREST

- The sum of all urban trees growing in highly altered community environments where humans are the main drivers of influence and disturbance
- Includes publicly and privately owned trees....trees along streets and in backyards, as well as stands of remnant forests
- Urban Forestry = the art, science, and technology of managing trees, forests, and natural systems in and around cities, suburbs, and towns for the health and well-being of all people

MATURE Trees Provide More Carbon Storage and Other Ecosystem Services



Trees Face Many Challenges in Urban Environments

Above ground

Crown width and height.
Tree height compared to crown

Lack of sunlight

Air pollution

Space between trees

No room for crown growth

Electrical wires, i.e.
Utility clearance



Limited tree
planting pit size

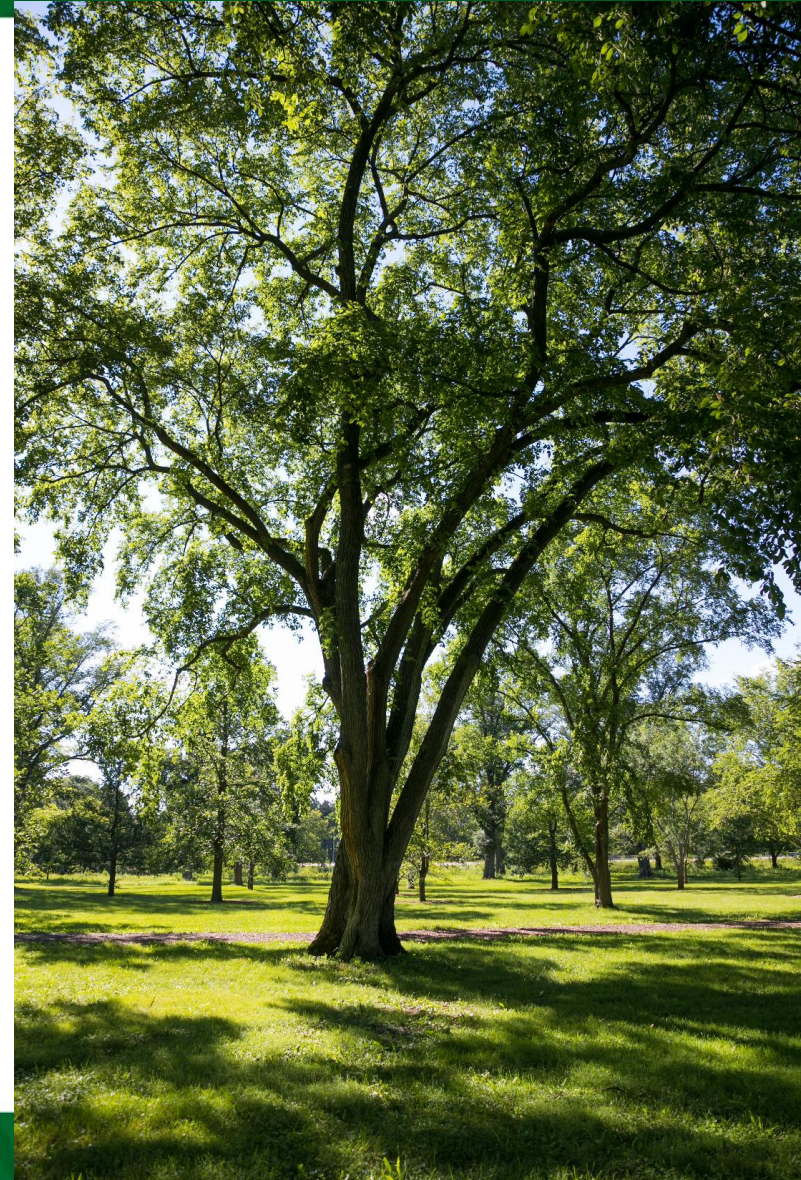
Underground wires,
cables, and pipes

Soil compaction

Below ground

Key Areas for Improvement

1. Protecting large trees
2. Improving diversity and age structure
3. Improving standards, planning and management
4. Broad community collaborations



Botanical Gardens are Partners for Urban Forestry

- 1) botanical and horticultural knowledge
- 2) public education, outreach & training



The Morton Arboretum



Tree Breeding and Evaluation

ACCOLADE™ elm

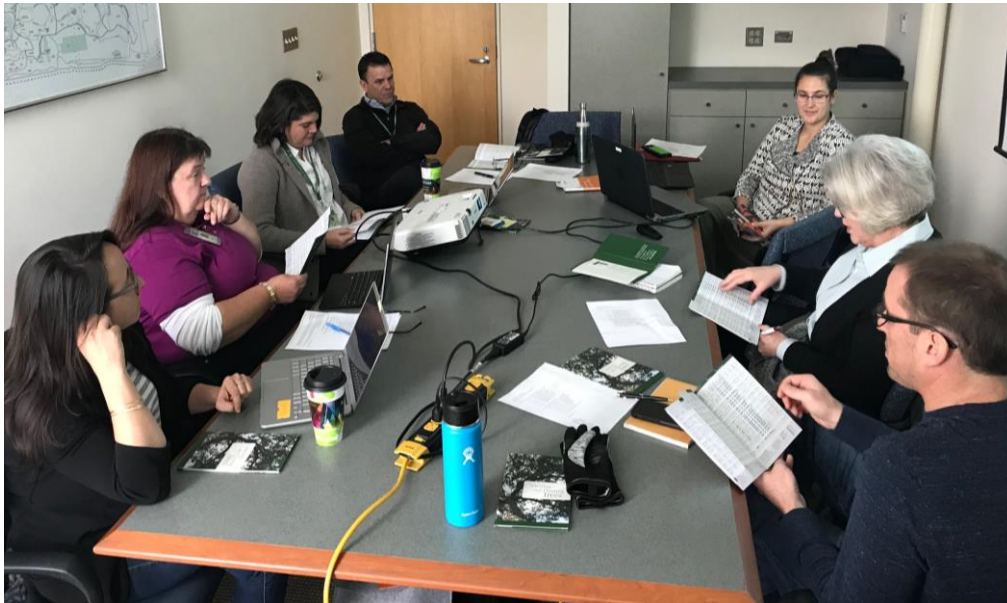


Acer freemanii Marmo™ maple



Tree Selection and Care

Regional Tree Selection Guides



Tree Research on the Urban Forest



Chicago Region Trees Initiative for Broad Community Coordination



Arboricultural Training



Development of Tree Preservation Ordinances and Protection Policies

Tiered Tree Ordinance Templates



Bronze

Silver

Gold



Development of Urban Forest Management Plans



Communities need a strategy — Urban Forest Management plan



CHICAGO
REGION
TREES
INITIATIVE

Our Trees.
Our Communities.
Our Future.

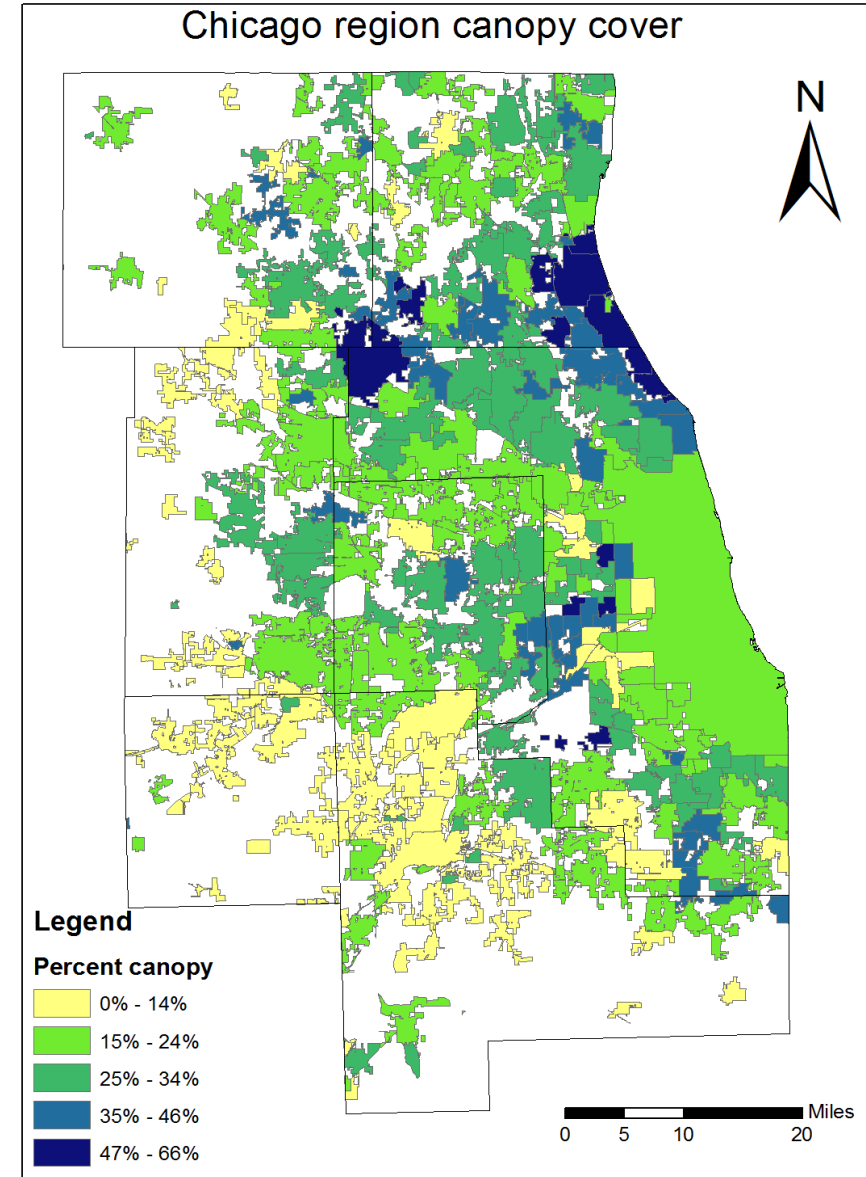
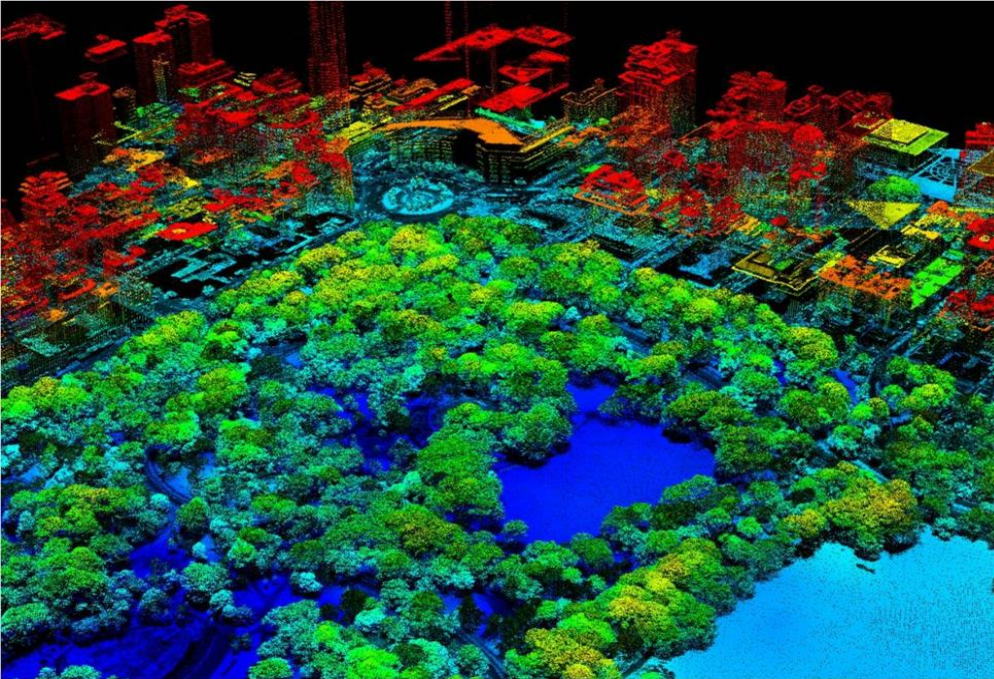
DRAFT

(Insert organization name)
Urban Forestry Management Plan

(Insert Organization Name Here)

Urban Forestry Management Plan

Inventories and Analytics



ArbNet and Morton Register of Arboreta

MORTON REGISTER OF ARBORETA

[BROWSE BY COUNTRY](#) | [BROWSE BY U.S. STATE](#) | [ACCREDITED ARBORETA](#) | [ALPHABETICAL LIST](#)

View the [Morton Register of Arboreta](#)

The Morton Register of Arboreta is a comprehensive list and database of arboreta and public gardens that have a substantial focus on woody plants. The Morton Register is one of the services provided by ArbNet to strengthen the ArbNet Community. The purpose of the Morton Register is to identify all of the organizations in the world that collect and display trees, shrubs, and other woody plants for the benefit of the public, science, and conservation. The Morton Register is a constantly growing database and any identified or named arboretum, or public garden with a significant focus on woody plants, may be listed.

The Morton Register of Arboreta should not be confused with arboreta that have been accredited through the ArbNet Arboretum Accreditation Program. ArbNet-accredited arboreta are highlighted in the Morton Register with the official ArbNet accreditation badge and a link to their dedicated profile web page. Organizations listed in the Morton Register are strongly encouraged to become accredited through the [ArbNet Accreditation Program](#).

View the list of [ArbNet Accredited Arboreta](#) within the Morton Register.

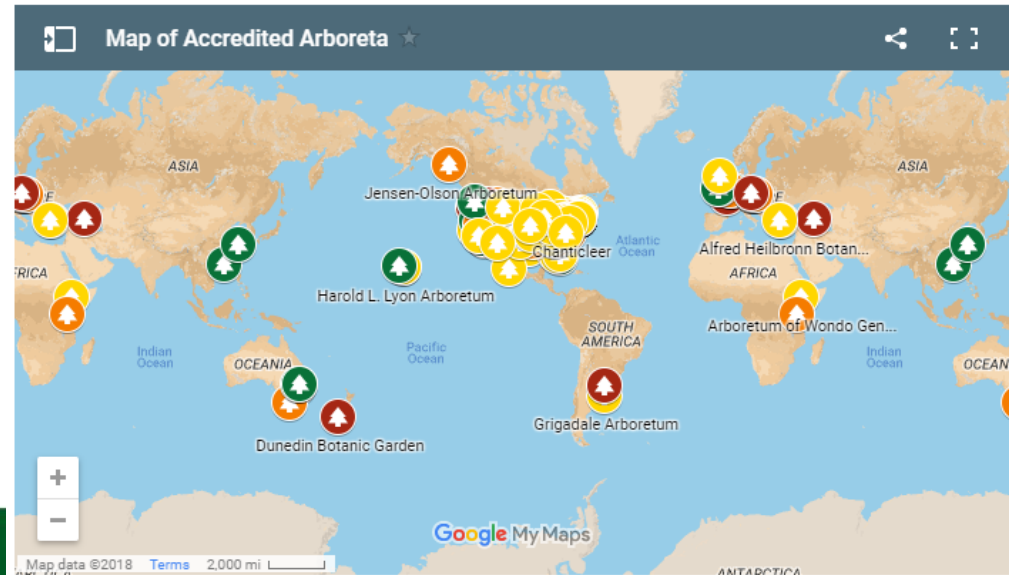


[ACCREDITATION](#) | [MORTON REGISTER](#) | [RESOURCES](#)

Welcome to ArbNet

ArbNet is an online, interactive community of arboreta that supports the common purposes and interests of tree-focused public gardens.

[LEARN MORE](#)



Intersections of Professional Gardens with Urban Forestry



1) Botanical and horticultural knowledge

- Regional Tree Selection
- Climate Change Adaptability
- Breeding and Selection
- Data Inventories & Analyses
- Urban Forestry and Arboriculture Consulting
- Research on Urban Forestry

2) Public education, outreach & training

- Green Industry Training
- Distribution of Regionally Appropriate Trees
- Public and Community Programming
- Broad Community Coordination and Collaboration

Dual Call to Action

City planners, landscape architects, consultants, politicians and urban forest professionals need to reach out to regional botanical gardens to involve them

Professional Botanic Gardens need to exert themselves more in the process and not passively wait on the sidelines to be asked





THE
CHAMPION
of **TREES**

4100 Illinois Route 53
Lisle, Illinois 60532
mortonarb.org • 630-968-0074

To collect and study trees, shrubs, and other plants from around the world, to display them across naturally beautiful landscapes for people to study and enjoy, and to learn how to grow them in ways that enhance our environment.

Our goal is to encourage the planting and conservation of trees and other plants for a greener, healthier, and more beautiful world.