



World Forum on  
Urban Forests  
Mantova 2018

The Past - Changing Environment  
PS 1.4 Coccozza

# Dendrochemistry to reconstruct environmental pollution in urban forestry context

Claudia Coccozza<sup>1</sup>, Roberto Tognetti<sup>2</sup>, Olivier Bachmann<sup>3</sup>, Paolo Cherubini<sup>4</sup>

<sup>1</sup> Istituto per la Protezione Sostenibile delle Piante IPSP, CNR, Sesto Fiorentino, [claudia.coccozza@ipsp.cnr.it](mailto:claudia.coccozza@ipsp.cnr.it)

<sup>2</sup> Dipartimento di Agricoltura, Ambiente e Alimenti, Università degli Studi del Molise, Campobasso, [tognetti@unimol.it](mailto:tognetti@unimol.it)

<sup>3</sup> Institute of Geochemistry and Petrology, ETH, Zurich, Switzerland, [olivier.bachmann@erdw.ethz.ch](mailto:olivier.bachmann@erdw.ethz.ch)

<sup>4</sup> WSL - Swiss Federal Institute for Forest, Snow and Landscape Research, Birmensdorf, Switzerland, [paolo.cherubini@wsl.ch](mailto:paolo.cherubini@wsl.ch)





**World Forum on  
Urban Forests**  
Mantova 2018

**The Past**

**Changing Environment**

**Dendrochemistry  
to reconstruct environmental pollution  
in urban forestry context**

## Changing Environment



**Trees are affected by urban and industrial pollution  
in relation to the degree and time of the pollution, tree species, habitat conditions,  
orography of the area and the location of trees in relation to emitters.**





## The Past

**Tree rings** have been recognized for a long time as a source of many information, a useful tool for analysing environmental changes with a detailed reconstructions of tree growth, wood density (e.g. Conkey 1988), anatomical features of the wood (e.g. Fritts et al. 1991), the elemental composition (dendrochemistry) (e.g., Lepp 1975) and stable isotopes.



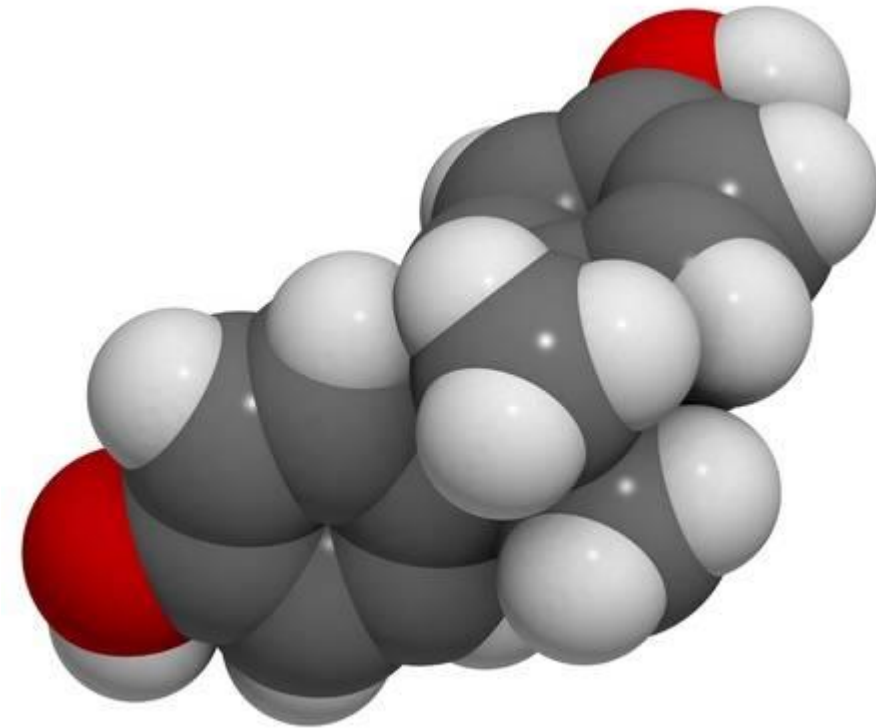




# Dendrochemistry



**Dendroecology**  
is the tree-ring analysis  
to answer ecological questions

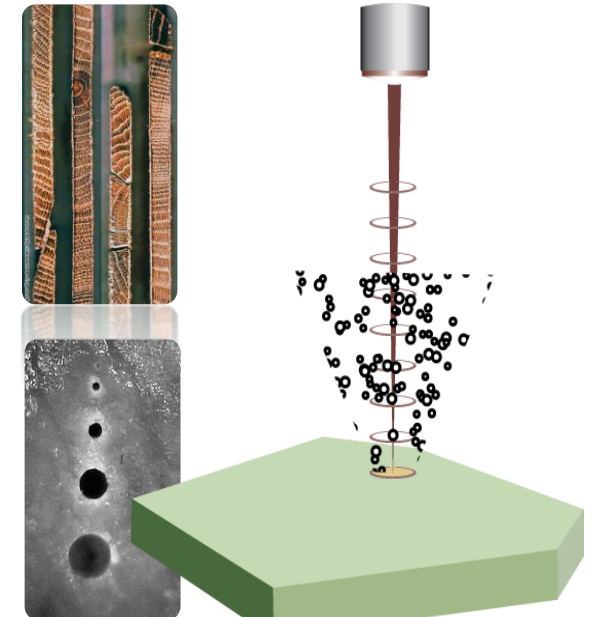
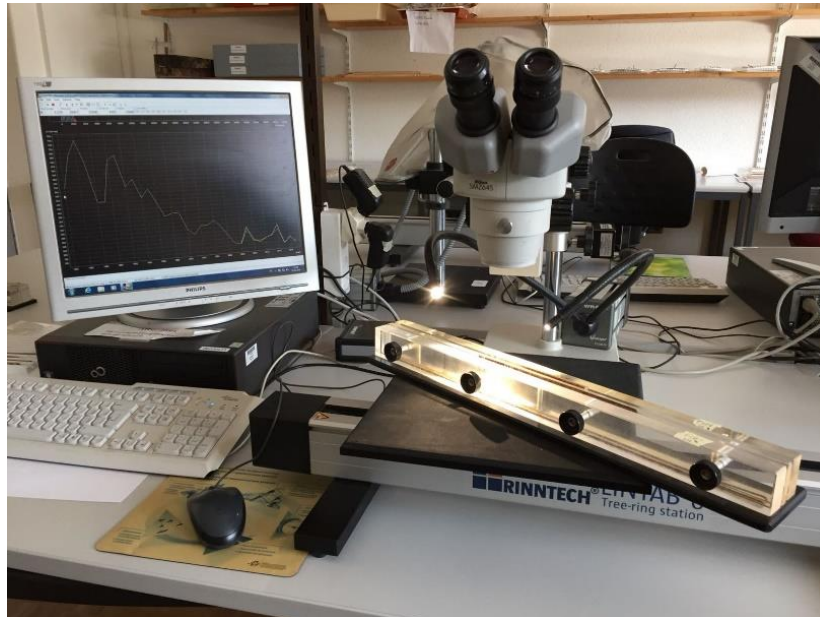


**Chemistry**  
is the analysis of compounds, composed of atoms, i.e. elements, and molecules, i.e. combinations of atoms



## Methodology

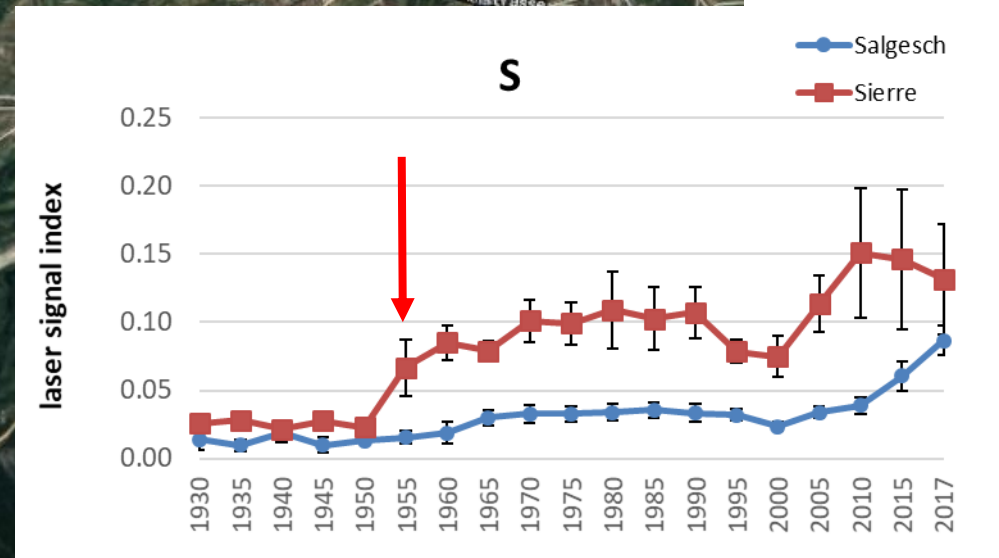
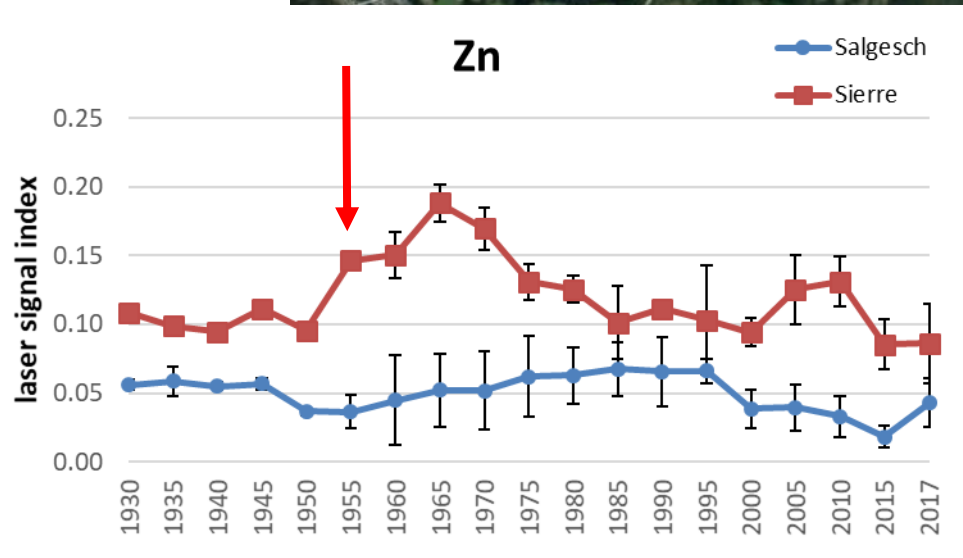
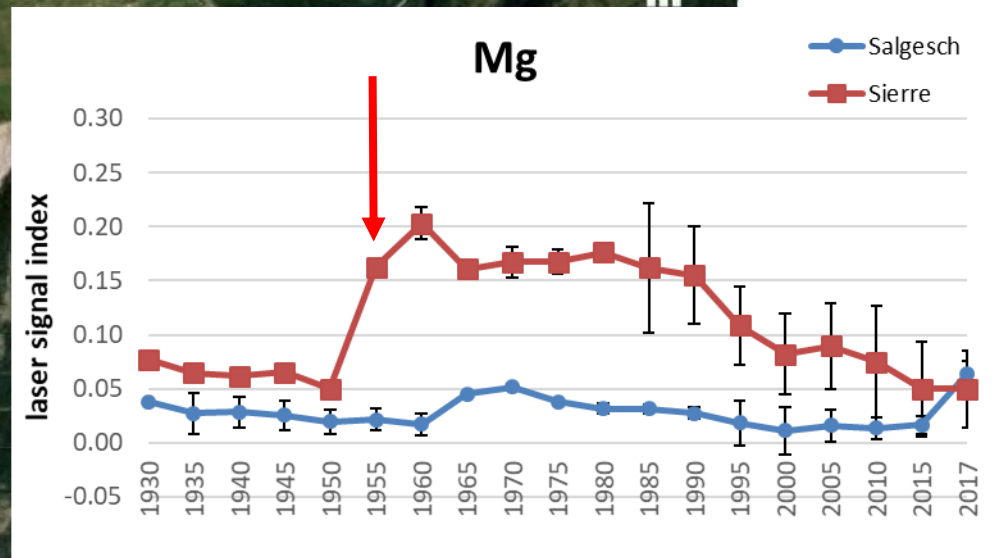
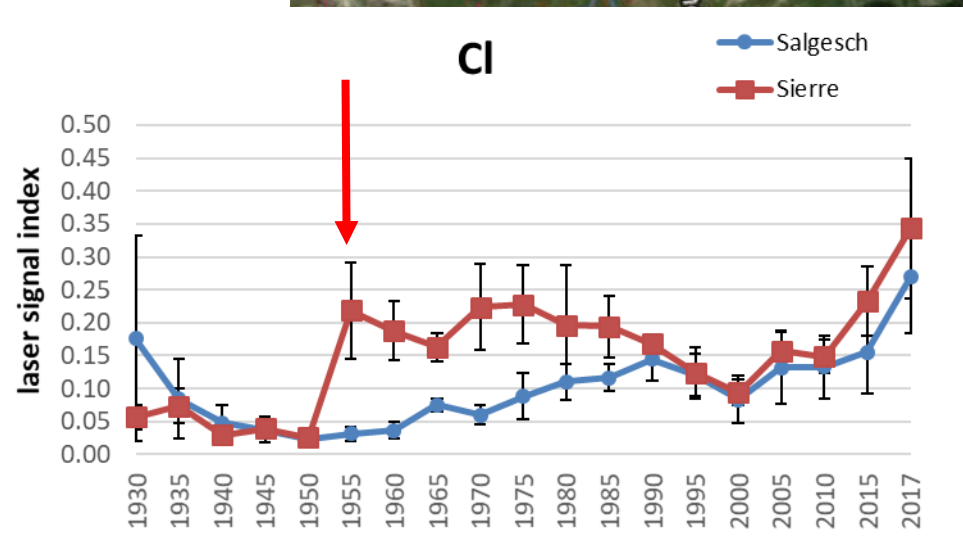
Laser ablation-inductively coupled plasma-mass spectrometry (LA ICP-MS)  
for the detection of trace elements



### Laser index in tree-ring

$$I_x = (Level_x - Level_{lowest}) / (Level_{highest} - Level_{lowest})$$



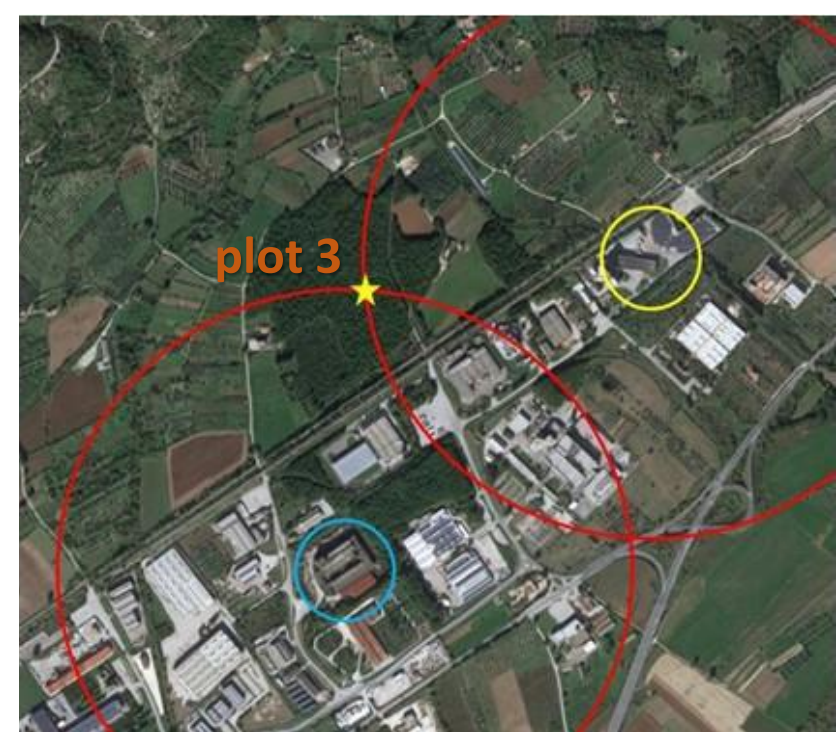
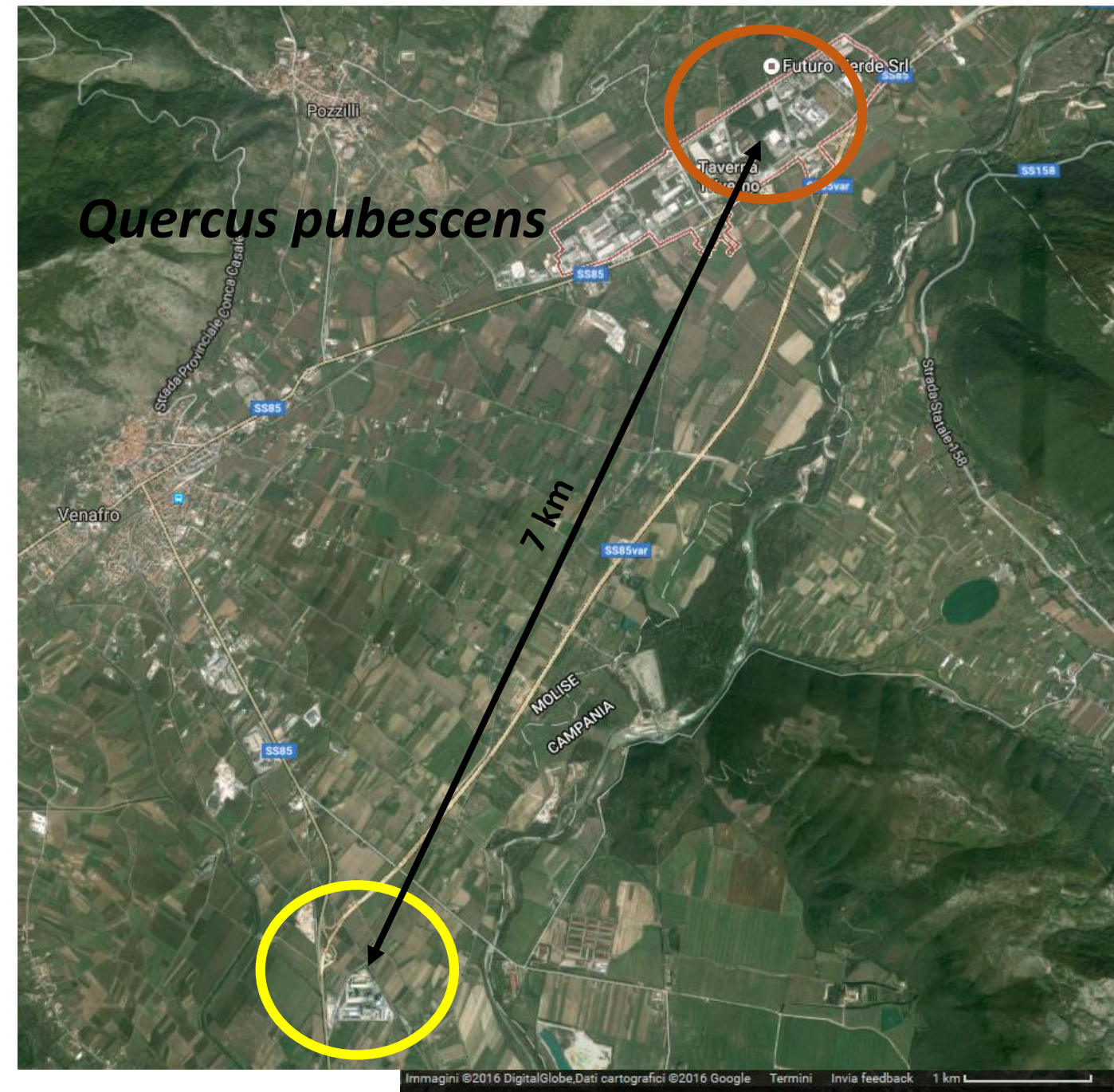


*Pinus sylvestris*

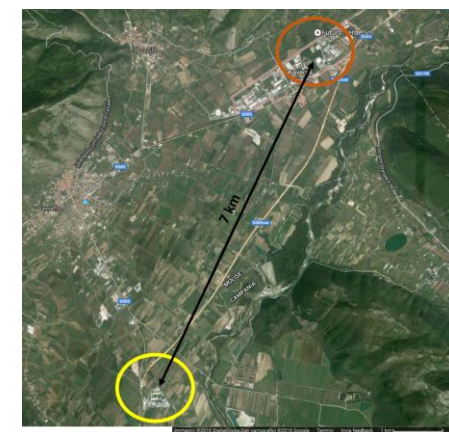
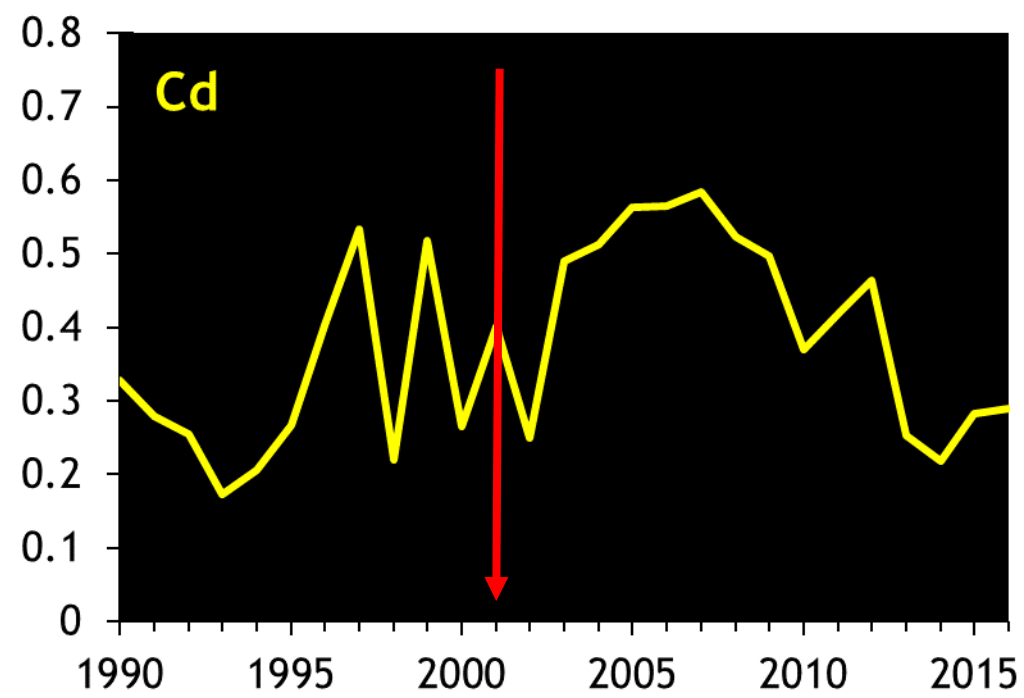
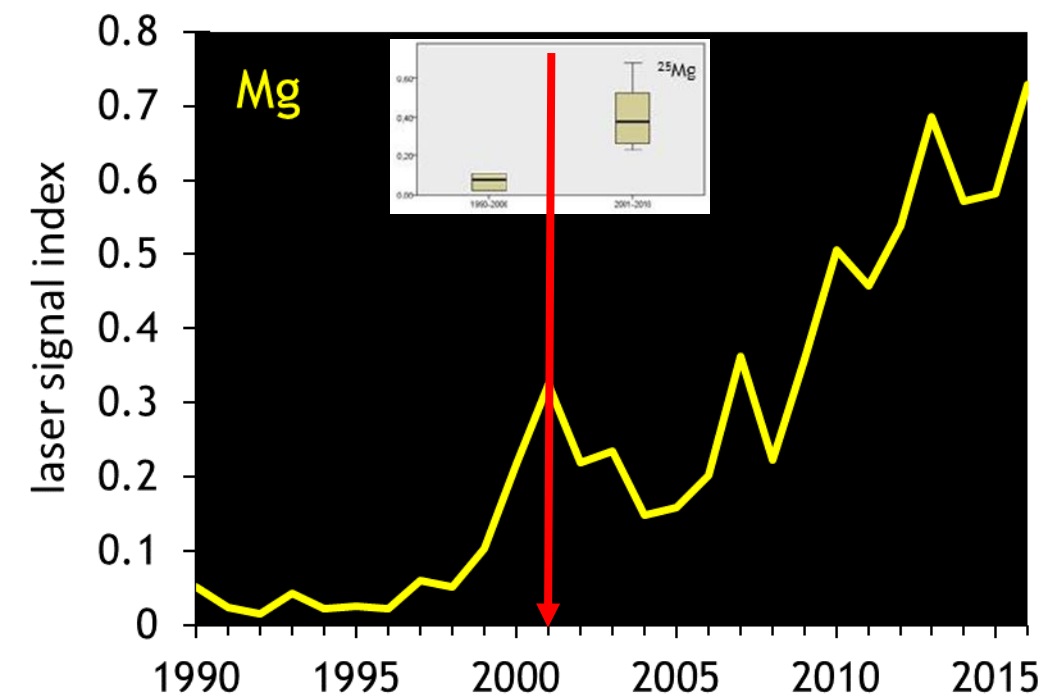
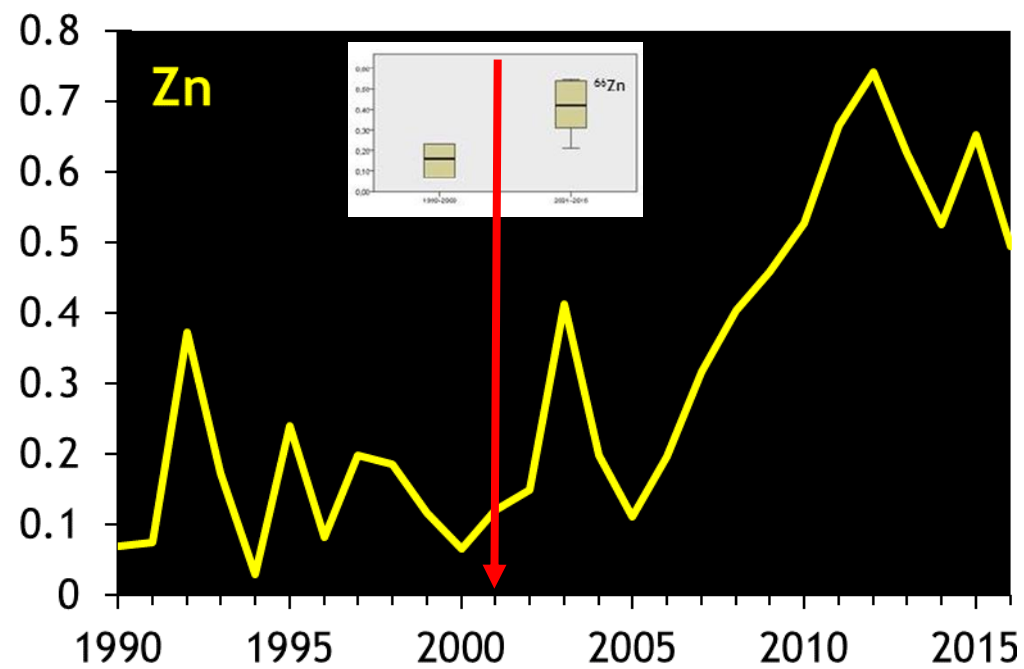
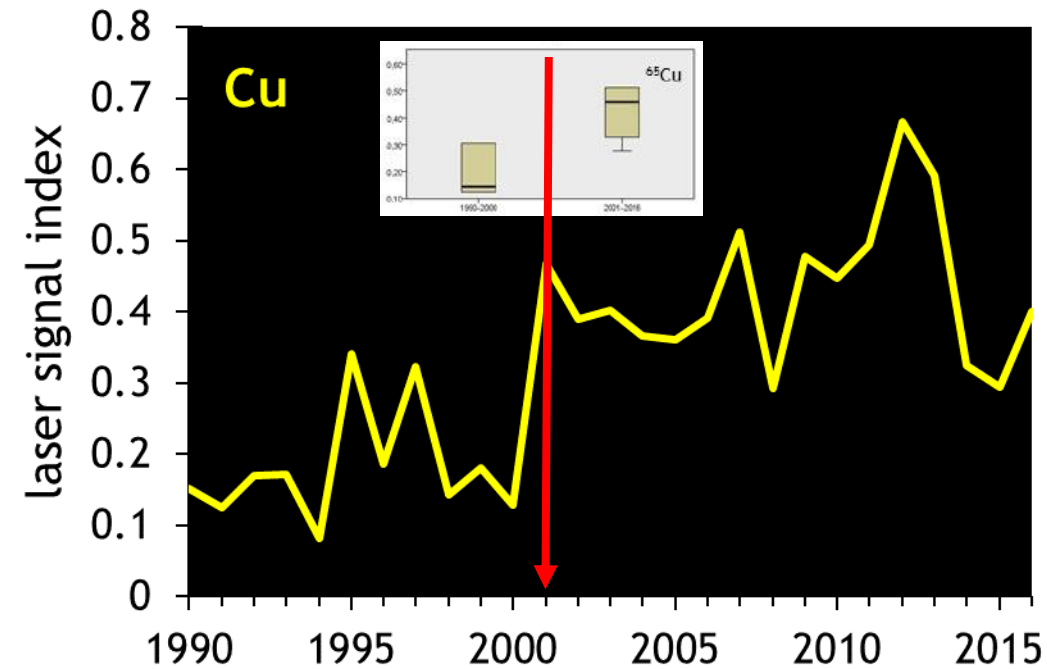




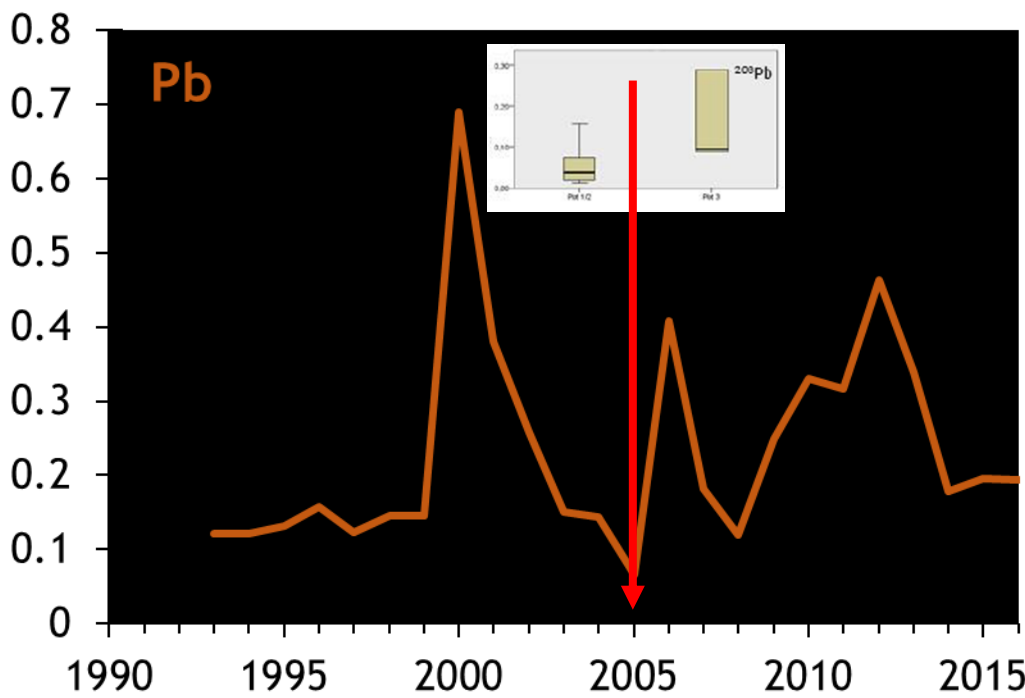
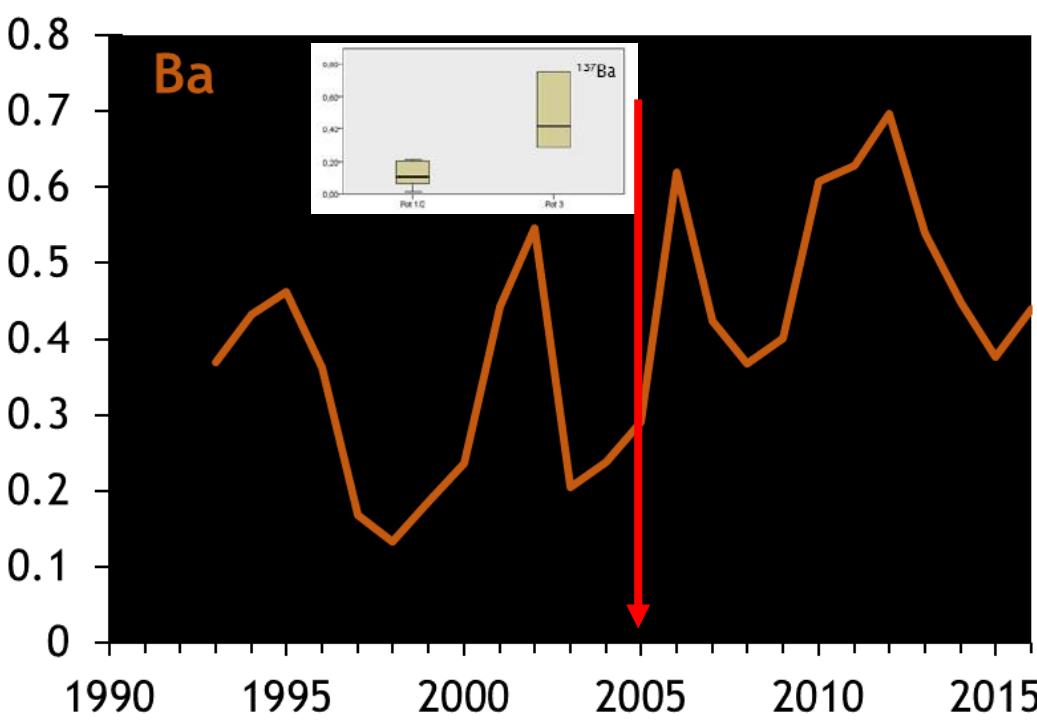
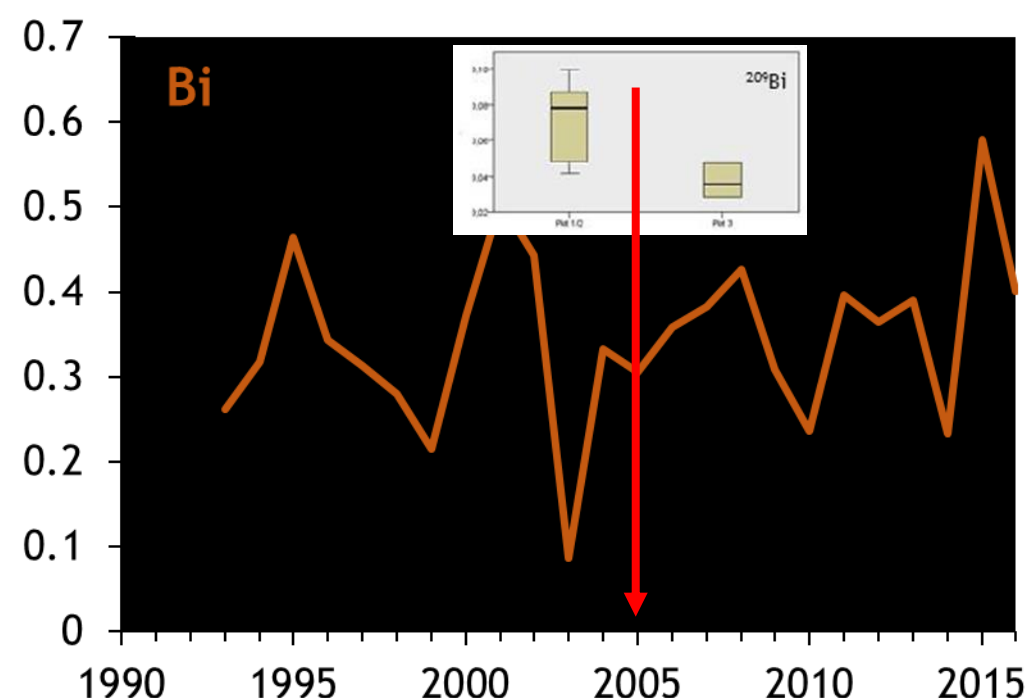
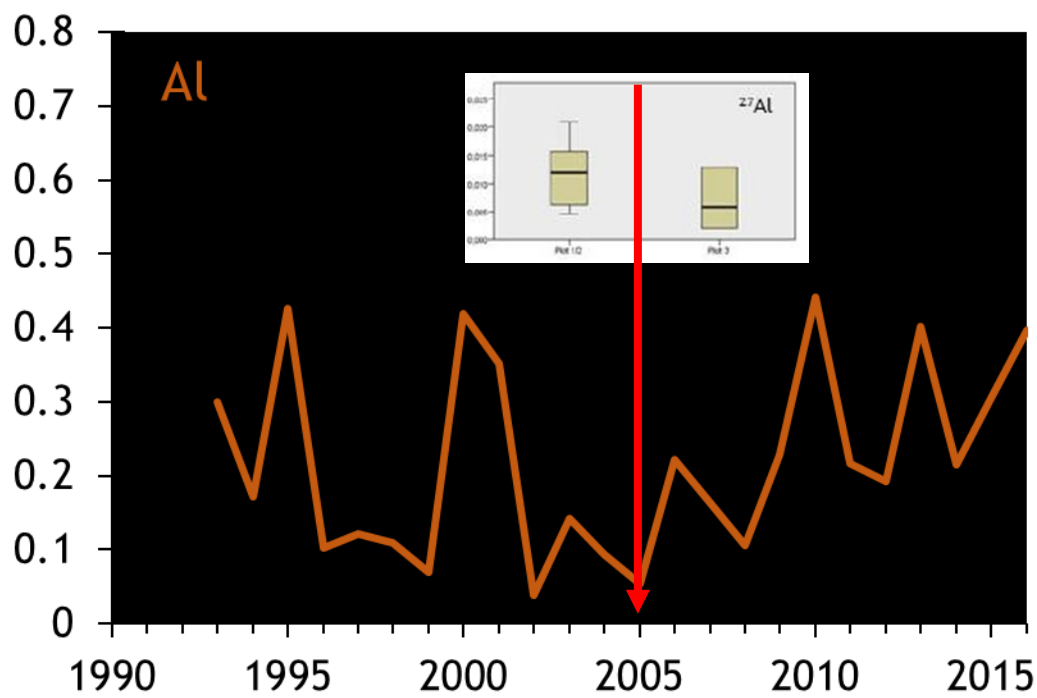
*Quercus pubescens*



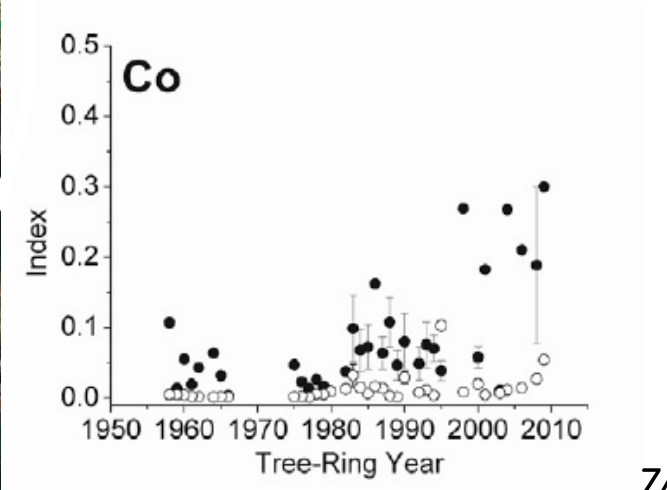
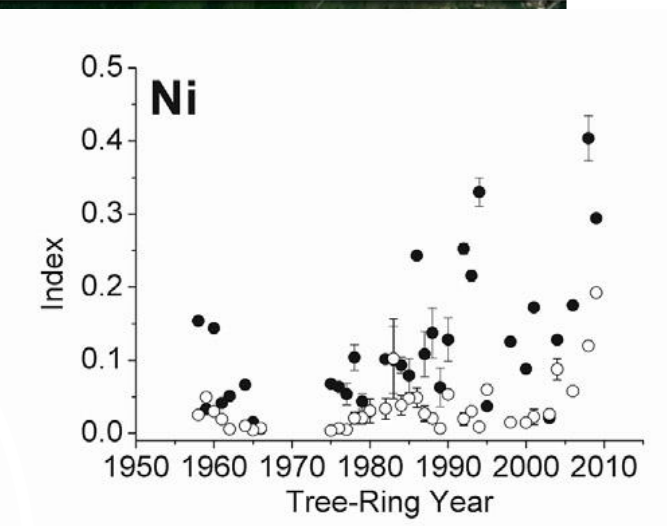
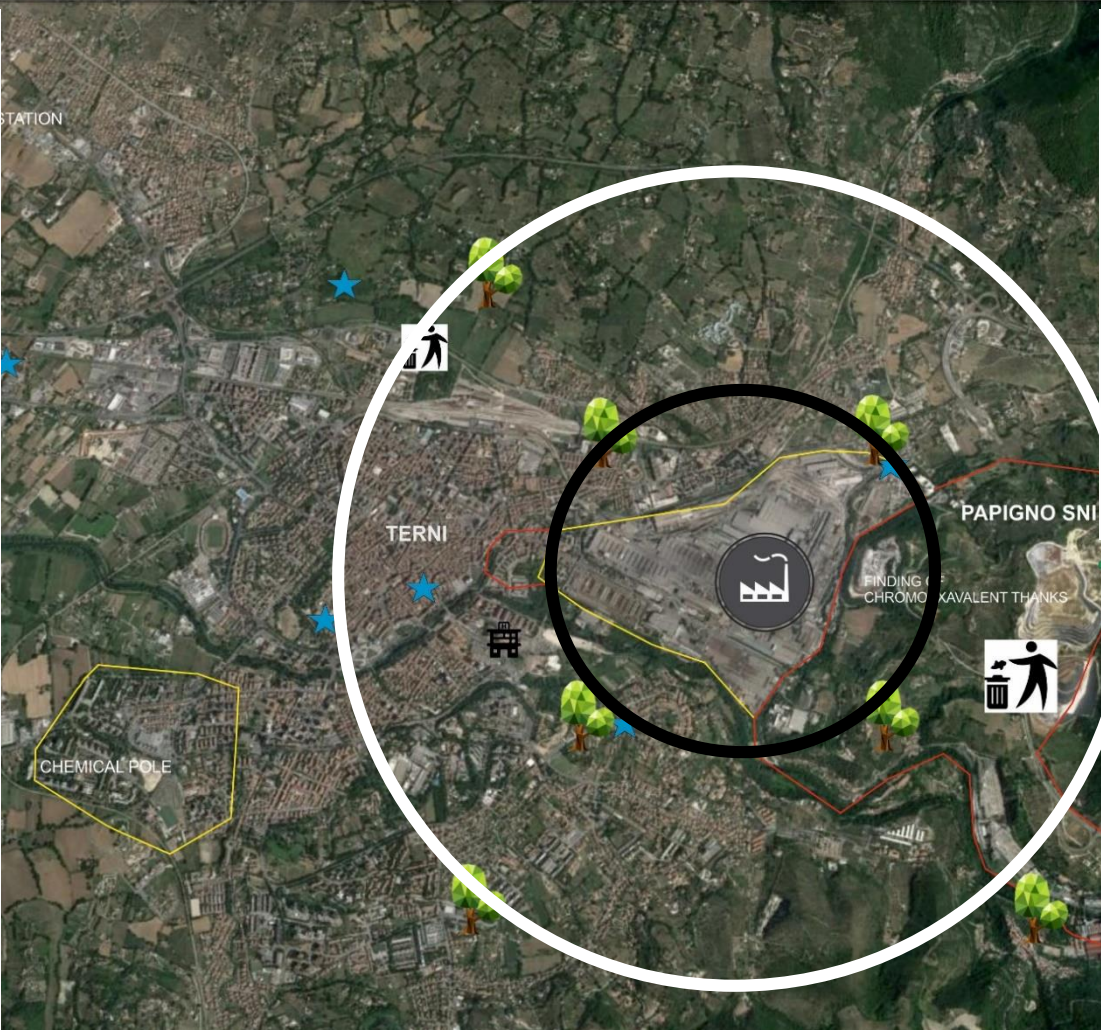
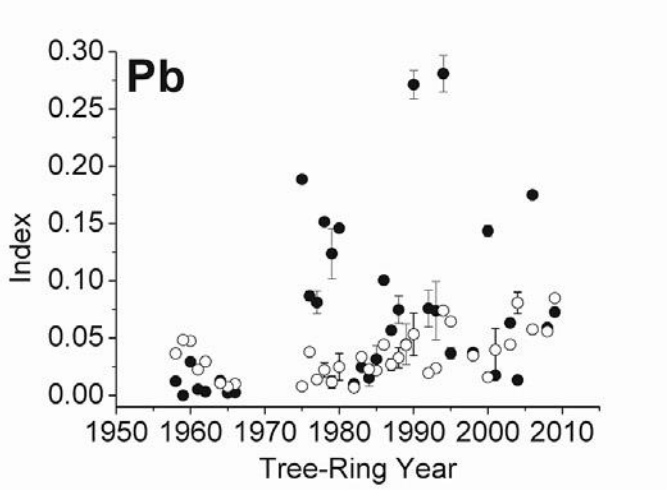
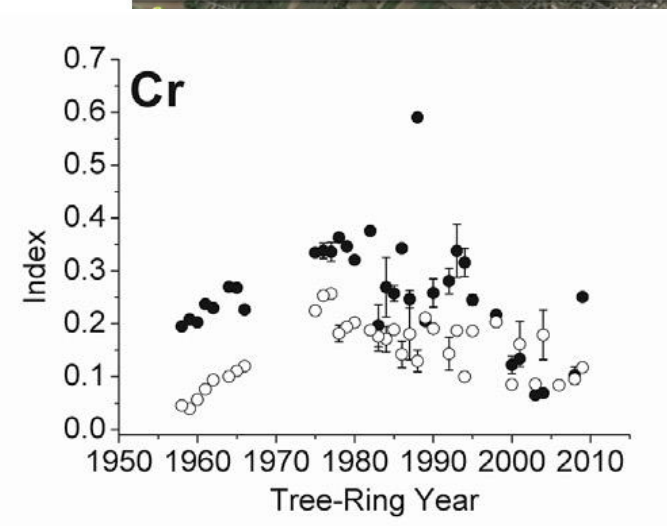
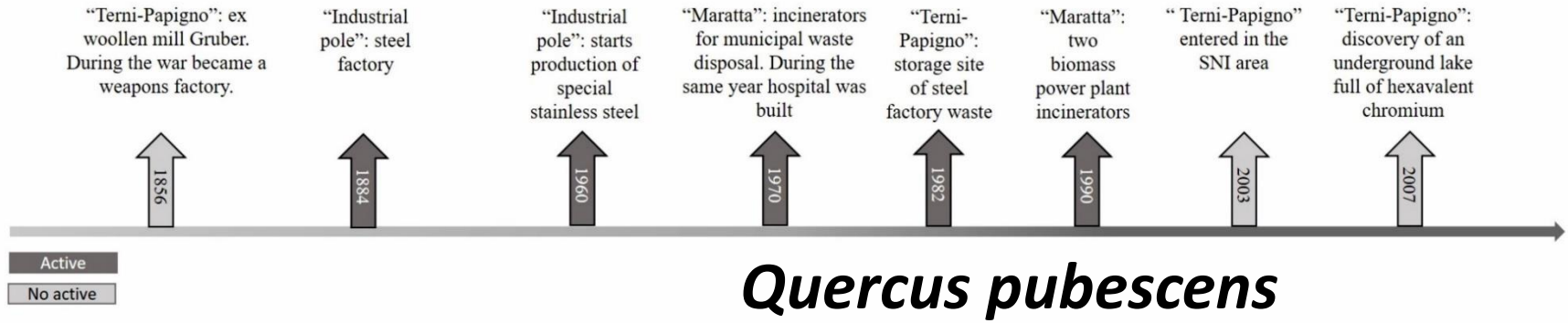








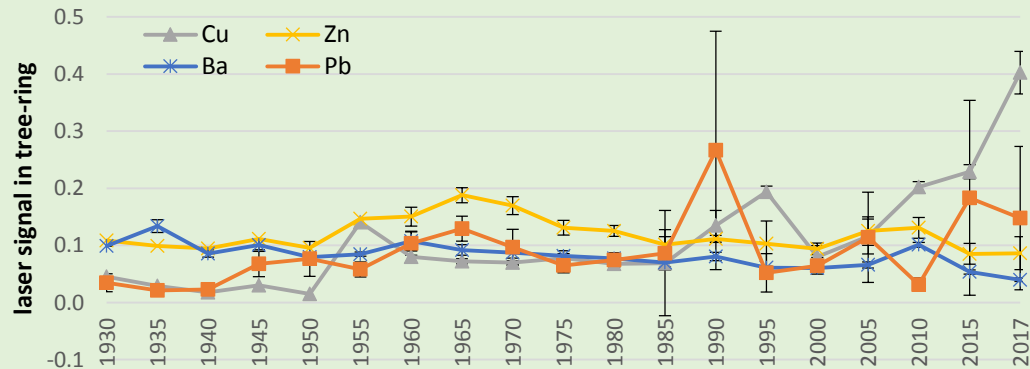








## ... What is the research impact of dendrochemistry?

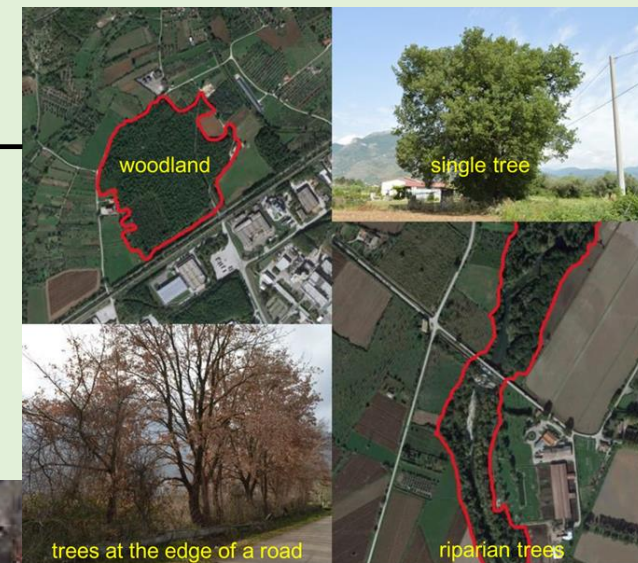


Tree-rings represent a widely available source of long-term data.

Availability of historical pollutant loading  
(not available from monitoring station data)!

High value of trees outside forest and greenspaces  
in urban contest to provide several ecosystem services!

The data are useful in determining the policies needed  
to control airborne pollution as input information for future  
air quality modelling.







**World Forum on  
Urban Forests**  
Mantova 2018

**The Past  
Changing Environment**

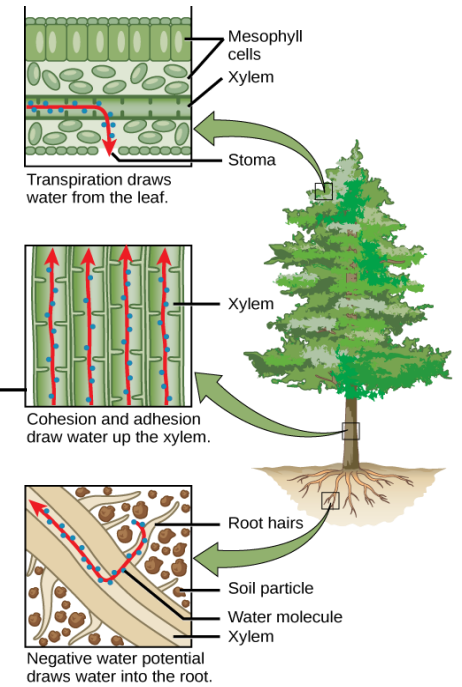
**Dendrochemistry  
to reconstruct environmental pollution  
in urban forestry context**

*... must be taken into account*

the accumulation of heavy metal depends  
by trees (**which species?**) and pollutant (**chemical specificity?**)



accumulation processes are described by  
**plant-pollutant relationship**  
(e.g., radial translocation, root, leaf or bark absorption)



appropriate sampling are necessary  
to improve the **definition of spatial and temporal pollutant trends**





**World Forum on  
Urban Forests**  
Mantova 2018

**The Past**

**Changing Environment**

**Dendrochemistry  
to reconstruct environmental pollution  
in urban forestry context**

**Thank you for the attention!**

*Claudia Coccozza*