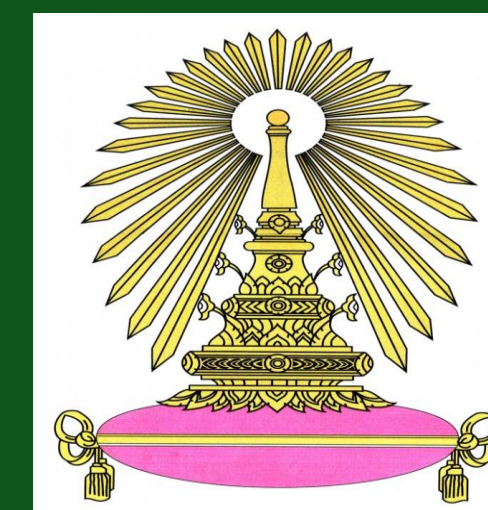




# Sustainable Development in the Peri-Urban Green Area by Local Community : A case study of Kung Bangkrachao Community, Thailand

Prapassorn Siriwichai (PhD Candidate)  
Chulalongkorn University







# Presentation outline

- Introduction
- Importance and rationale
- Previous research
- Comprehensive documentary analysis
- Local community engagement
- Conclusion

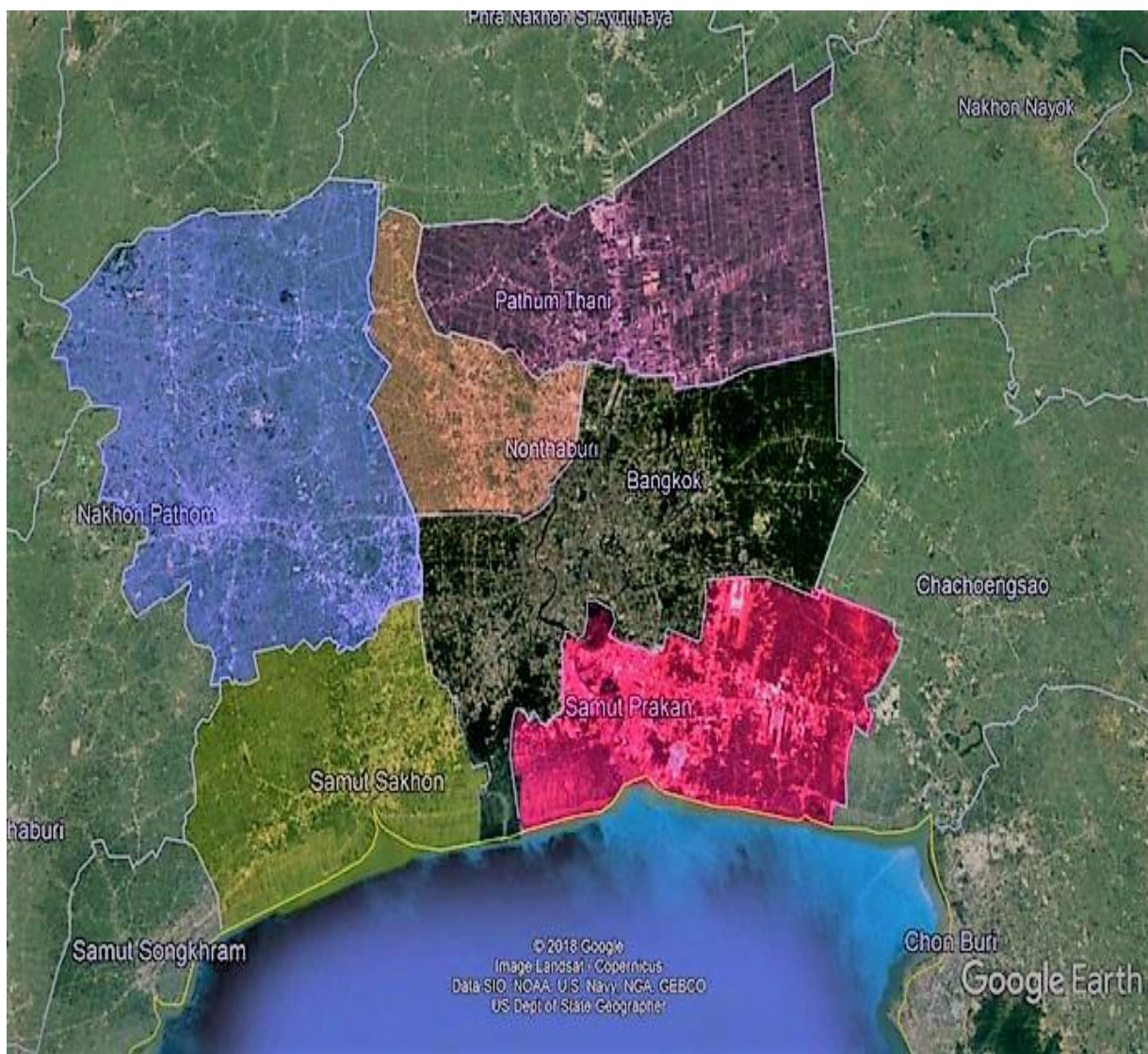
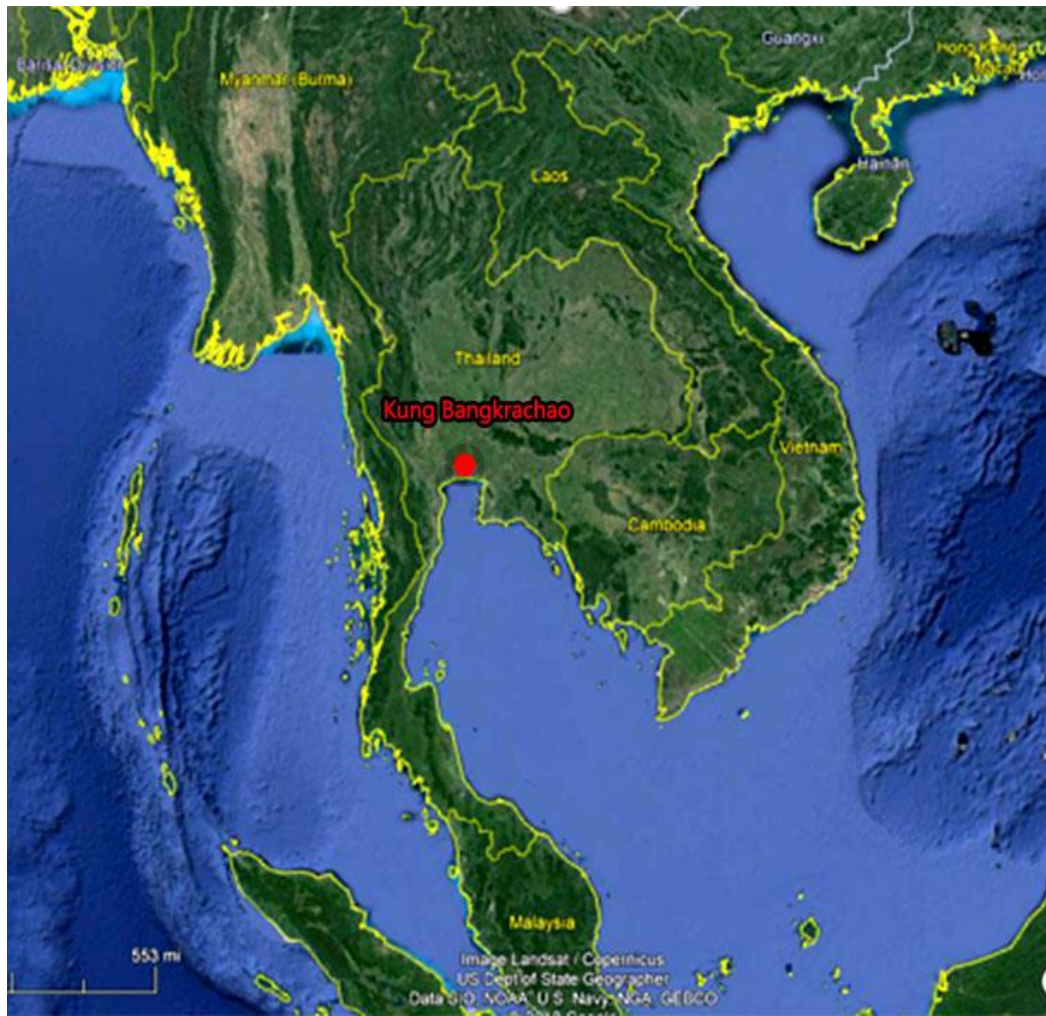






# Introduction

Kung Bangkrachao  
“Bangkok Green Lung”  
“The Best Urban Oasis of Asia”  
(2006)



## Thailand

Area: 513,140 km<sup>2</sup>  
Population: 66,188,503  
Density: 128.99

## Bangkok Metropolitan Region

Area: 7,761.65 km<sup>2</sup>  
Population: 10,831,988  
Density: 1,395.58

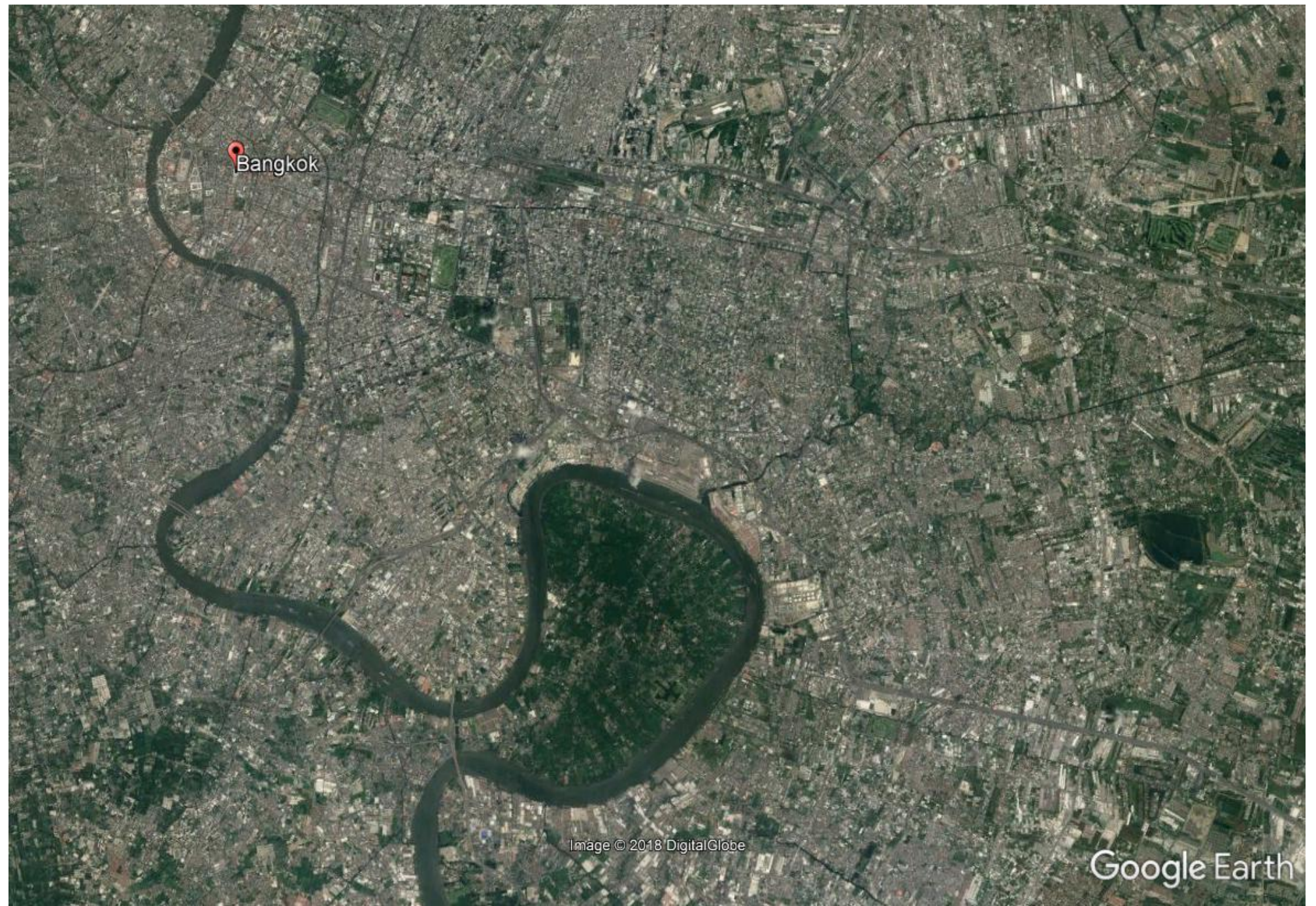
## Bangkok

Area: 1,569 km<sup>2</sup>  
Population: 5,682,415  
Density: 3,621.68

## Kung Bangkrachao

(6 subdistricts in Samutprakarn)

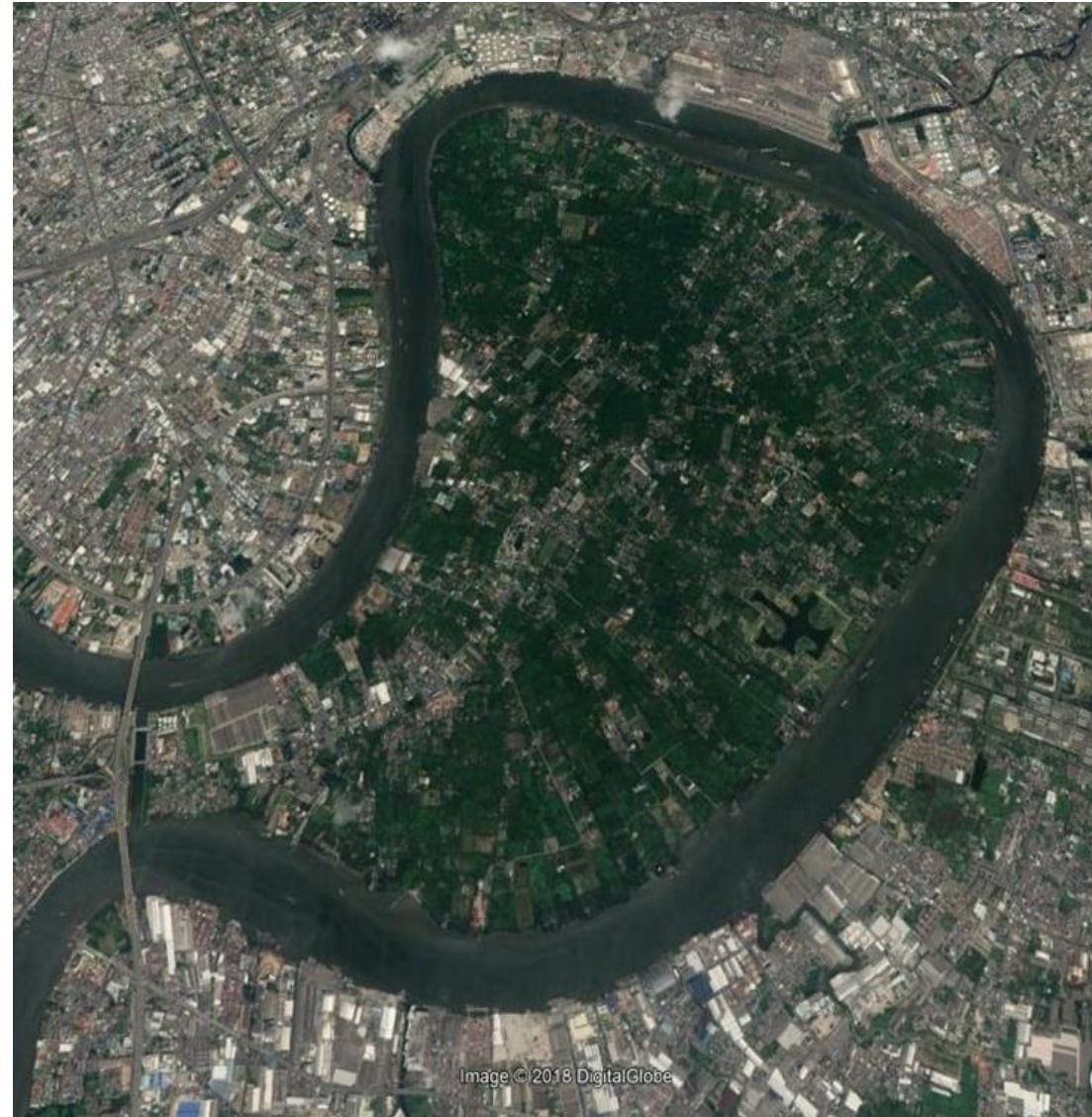
Area: 18.9 km<sup>2</sup>  
Population: 39,215  
Density: 2,074.87



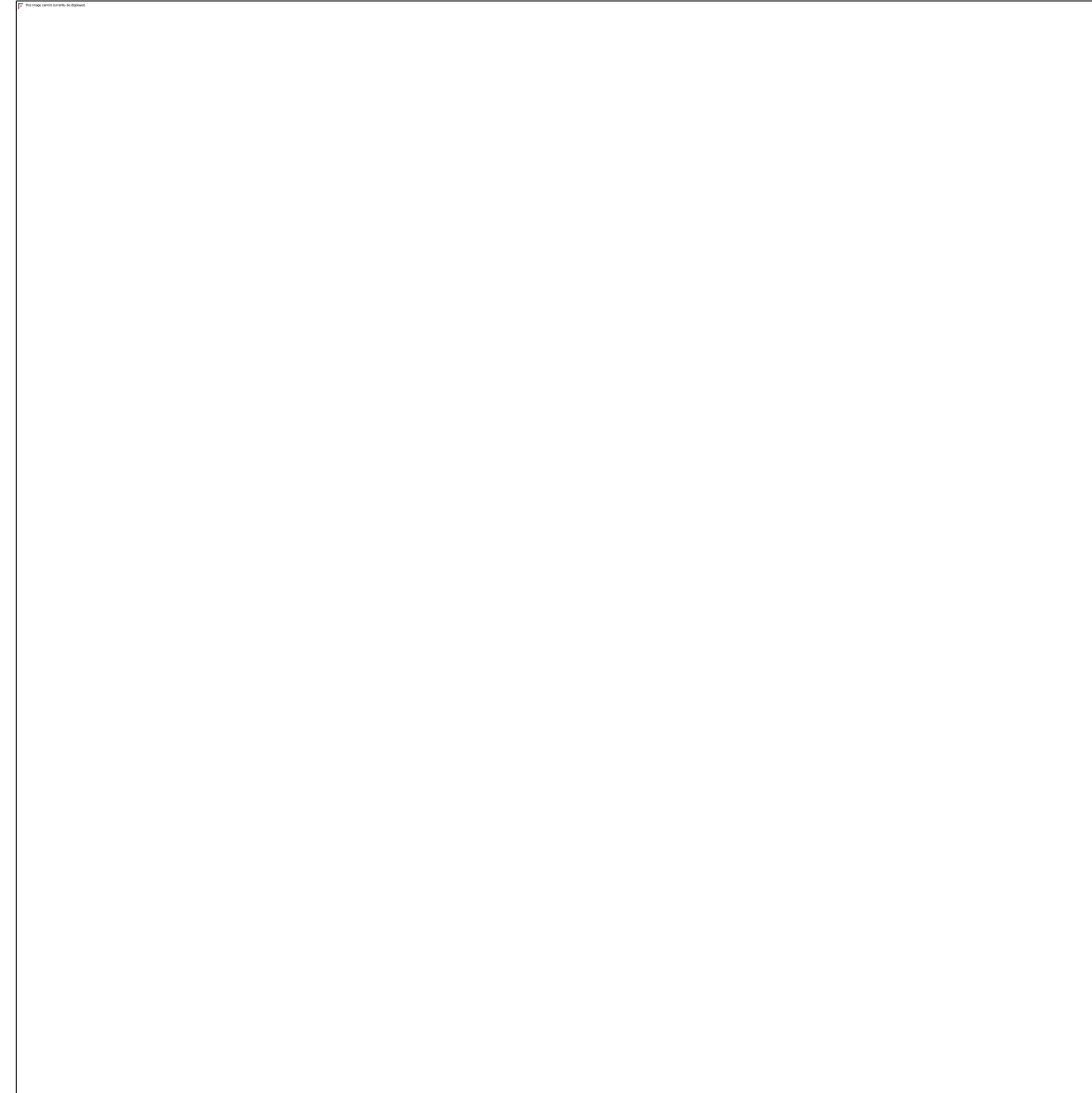




# Importance and rationale



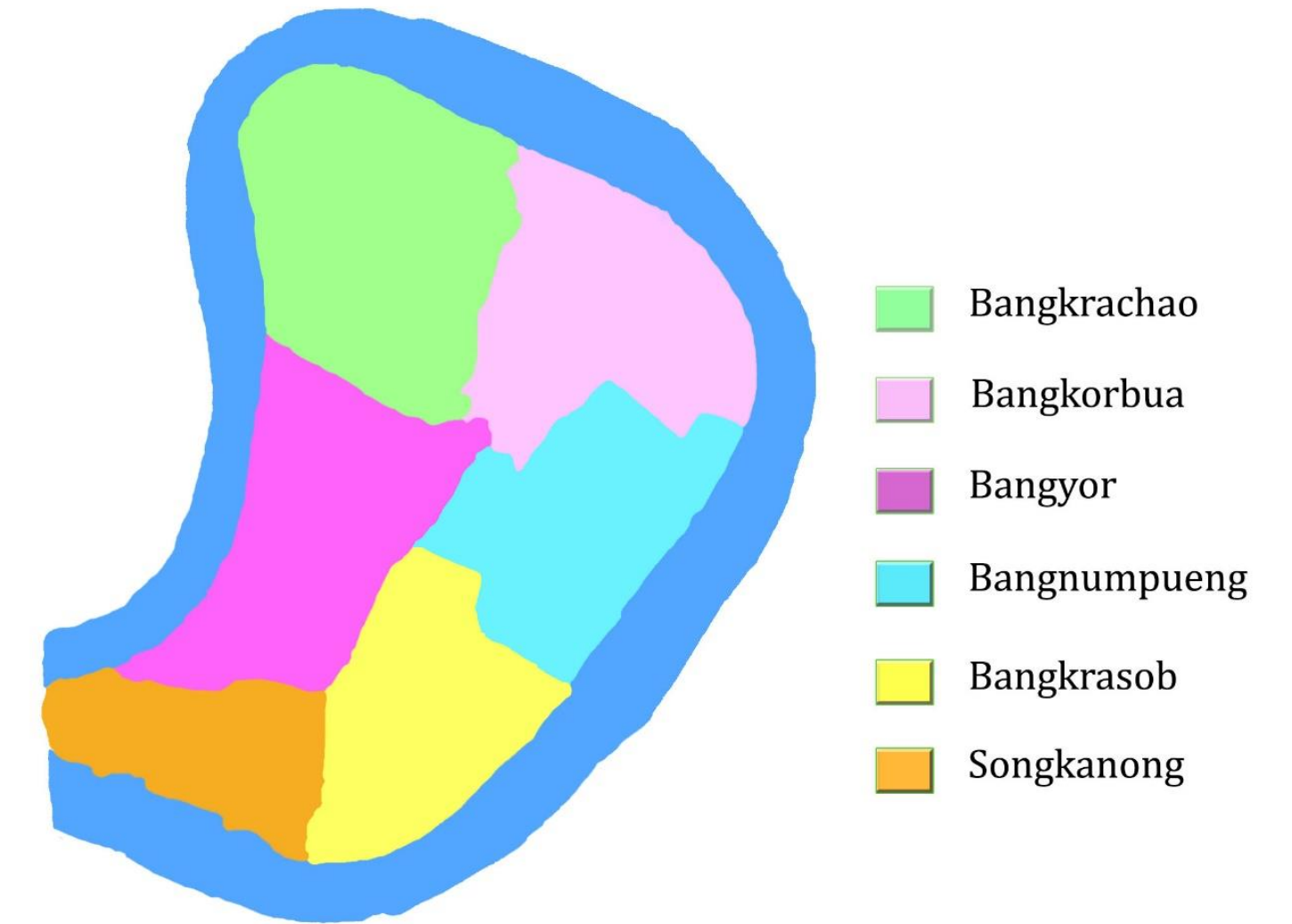
14.09.1977  
preserve as the  
green space



25.06.1991  
“garden in the  
city” project  
10% belong to  
government  
(red color)



05.02.2014  
government  
released city  
plan for  
“green-white strip”



### Population:

Bangkrachao 5,161	Bangnumpueng 4,904
Bangkorbua 7,235	Bangkrasob 2,892
Bangyor 11,307	Songkanong 7,716





## Previous research

Since 1977 Kung Bangkrachao has been the spot light, more than 80 research and studies in the area mainly topics are:

Fundamental  
data

Tourism and  
cultural heritage

Conservations

Land  
management ,  
Land use

People  
participation

Agricultural  
management and  
production

Biodiversity

Natural resource  
management

Other  
research fields





**World Forum on  
Urban Forests**  
Mantova 2018

## Comprehensive documentary analysis



- By 2030, enhance inclusive and sustainable urbanization and capacity for participatory, integrated and sustainable human settlement planning and management in all countries
- Strengthen efforts to protect and safeguard the world's cultural and natural heritage
- Support positive economic, social and environmental links between urban, per-urban and rural areas by strengthening national and regional development planning



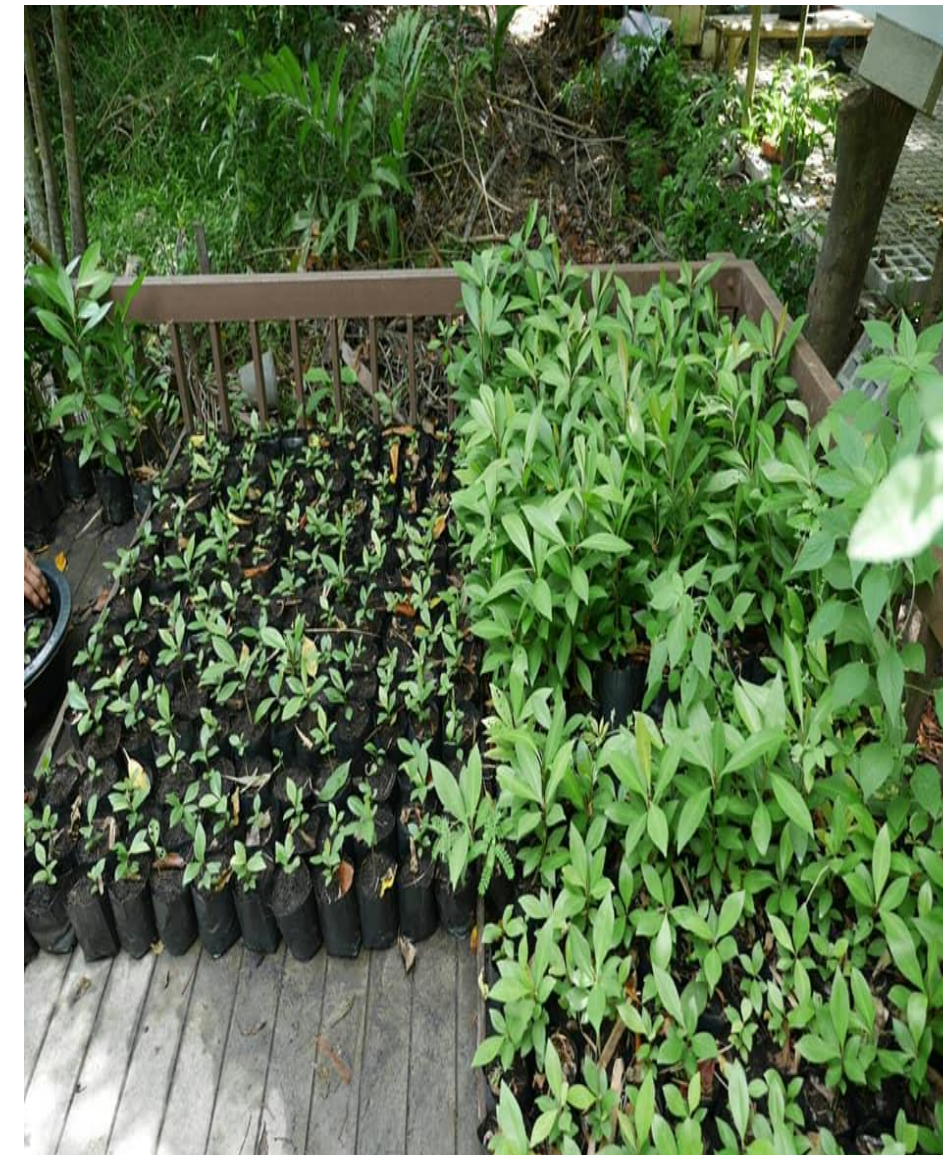


World Forum on  
Urban Forests  
Mantova 2018

# Local community engagement

## **Prempree Trirat** Chairman of “Suan Pa Ket Nom Klao Urban Community Forest” **1<sup>st</sup> Urban Forest Community of Thailand**

- Provide the knowledge to visitors from all ages come to for relaxation and learning environment
- Provide seedlings for visitors to plant within the community
- Encourage young generation to form youth group for continuing of conservation from generation to generation
- Conserve rare species of local flora and fauna
- Establish a forum as a center for all members of local communities within Kung Bangkrachao to discuss about the conservation of this area
- Also a site for conducting activities of many business companies under Corporate Responsibility Program (CSR)





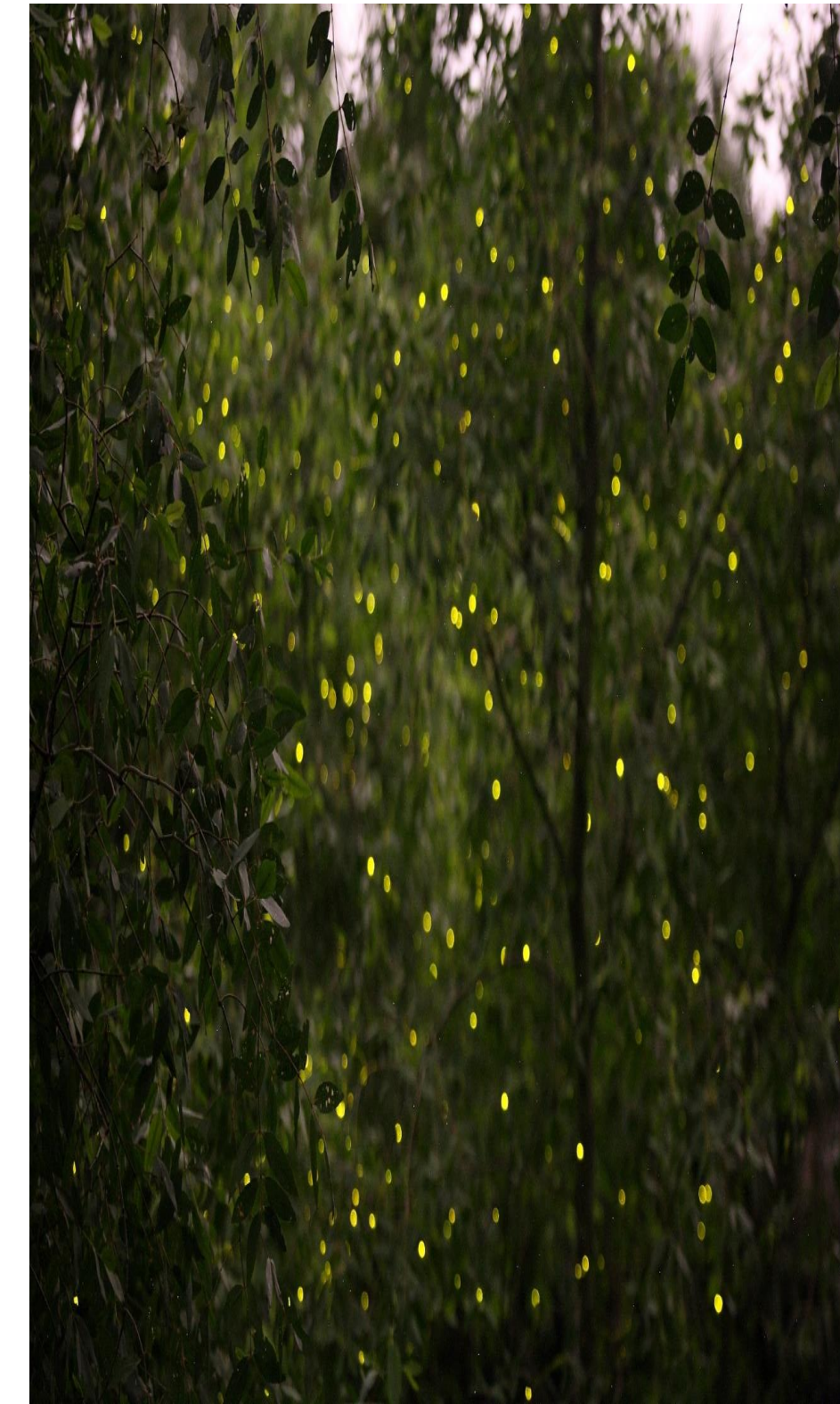


**World Forum on  
Urban Forests**  
Mantova 2018

# Local community engagement

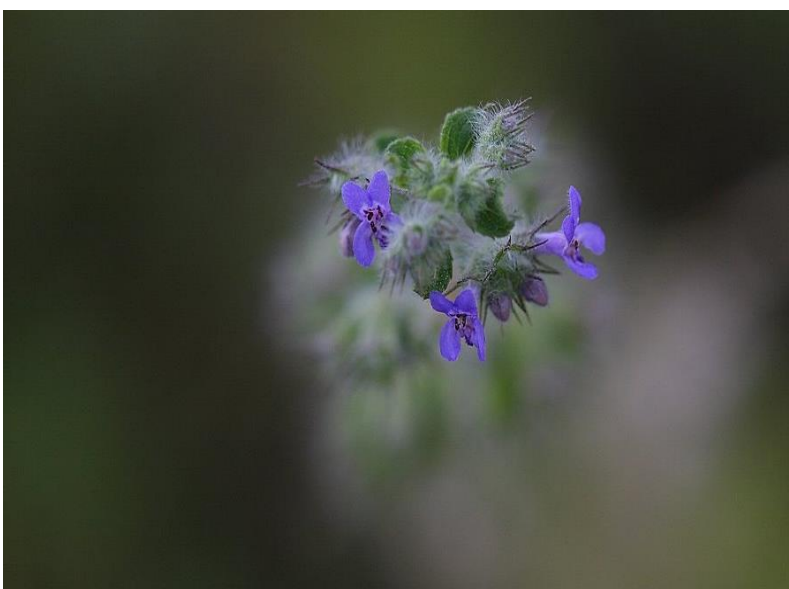
## Rujirek Plubchang and Sukit Plubchang

- 2008 founded “Lumpoo Bangkrasob” conservatory group
- 2014 joined with “Rak Kung Bangkrachao” volunteer group for conserve the area
- 2017 registered “Rak Kung Bangkrachao Community Enterprise”



### Projects :

Biodiversity mainly “Firefly”  
Clear water in Beautiful Canal  
Environmental education  
Producing products by local materials  
Cooperate with the companies thru CSR  
Etc.





# Local community engagement

**Pitsinee Kaewrungrueng**, a local development woman leader who has been a spirit volunteer since she was young.

- 2013 Awarded for the role of the leader in the community Bangkorbua
- 2014 Awarded for the good social development women
- Chairman of the “Barracuda Mango Community Enterprise” and more
- Volunteer and conservation in many areas ; biodiversity, religious and culture, woman rights, equality, tourism, handicapped, environment, etc.







# Conclusion

- Kung Bangkrachao is a unique and prosperous area and beneficial to human, animals and natural environment which is needs to conserve in a sustainable way
- Land speculations and urban sprawl, due to urban plan(green-white strip), are the main sources of pressure on the area
- Continuous support provided by institutions and organizations, along with local community contribution is an important solution to restrain the green area reduction.
- Sense of belonging, place attachment and spirit of volunteer activity are the main elements necessary for local people to ensure that Kung Bangkrachao must be conserved well







**World Forum on  
Urban Forests**  
Mantova 2018

บางกะเจ้า คมนาคมสีเขียวที่หล่อเลี้ยง กทม.

Thank you for your sharing and caring.